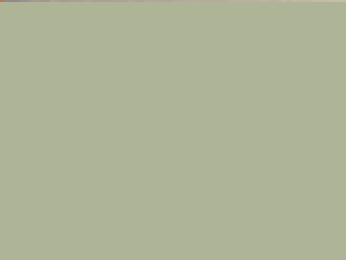


A STRATEGY FOR THE HISTORIC ENVIRONMENT IN THE SOUTH WEST



A STRATEGY FOR THE HISTORIC ENVIRONMENT IN THE SOUTH WEST



1. INTRODUCTION
2. THE HISTORIC ENVIRONMENT OF THE SOUTH WEST
3. THE NEED FOR THIS STRATEGY
4. A VISION FOR THE HISTORIC ENVIRONMENT IN THE SOUTH WEST
5. A STRATEGY FOR THE HISTORIC ENVIRONMENT IN THE SOUTH WEST

ACKNOWLEDGEMENTS

THIS REPORT WOULD NOT HAVE BEEN POSSIBLE WITHOUT THE HELP AND GUIDANCE FROM A NUMBER OF ORGANISATIONS AND INDIVIDUALS. THE SOUTH WEST HISTORIC ENVIRONMENT FORUM WOULD LIKE TO THANK BATH AND CAMERTON ARCHAEOLOGICAL SOCIETY, BATH AND NORTH EAST SOMERSET COUNCIL SITES AND MONUMENTS RECORD, CAROE AND PARTNERS ARCHITECTS, CORNWALL COUNTY COUNCIL, GODOLPHIN HOUSE, SOMERSET COUNTY COUNCIL, SOUTH WEST REGIONAL DEVELOPMENT AGENCY AND WOODCHESTER MANSION TRUST. INDIVIDUAL MEMBERS OF THE HISTORIC ENVIRONMENT FORUM AND ENGLISH HERITAGE WERE ESPECIALLY HELPFUL IN PROVIDING CASE STUDIES AND IMAGES TO SUPPORT THE TEXT. FINALLY, OUR DEEPEST THANKS GO TO LAND USE CONSULTANTS AND ESPECIALLY NICK JAMES WHOSE ENTHUSIASM AND COMMITMENT REMAINED WITH THIS PROJECT THROUGHOUT.



INTRODUCTION



LEFT
CASTLE DROGO

LYING ON THE EDGE OF THE DARTMOOR NATIONAL PARK, CASTLE DROGO ATTRACTS OVER 120,000 VISITORS A YEAR. IT IS ONE OF 70 PROPERTIES OWNED BY THE NATIONAL TRUST IN THE SOUTH WEST WHICH WELCOME OVER THREE MILLION PEOPLE A YEAR TO ITS GATED PROPERTIES, AND MILLIONS MORE TO ITS OPEN ACCESS COAST AND COUNTRYSIDE SITES.

PHOTOGRAPH: © THE NATIONAL TRUST

CASE STUDIES

1.1 THIS STRATEGY SETS OUT A VISION FOR THE FUTURE MANAGEMENT OF ONE OF OUR MOST VALUABLE ASSETS – OUR PAST.

1.2 AT THE HEART OF THE STRATEGY IS AN APPRECIATION OF THE RICHNESS AND DIVERSITY OF THE SOUTH WEST’S HISTORIC ENVIRONMENT. IT RANGES FROM: THE PREHISTORIC LANDSCAPES OF CARNMENELLIS AND WEST PENWITH; THE REMAINS OF ROMAN ROADS, TOWNS AND SPAS; MEDIEVAL MARKET TOWNS WITH THEIR WOOL MERCHANTS’ HOUSES AND CHURCHES; THE MANY HISTORIC HOUSES, PARKS AND GARDENS; COASTAL MILITARY INSTALLATIONS AND NAVAL BASES; AND THE LEGACY OF OUR MORE RECENT INDUSTRIAL PAST, INCLUDING TRADING PORTS SUCH AS BRISTOL, AND THE HERITAGE OF BRUNEL’S GREAT WESTERN RAILWAY.

1.3 BUT THE HISTORIC ENVIRONMENT IS MUCH MORE THAN JUST INDIVIDUAL HISTORIC SITES. IT IS THE WHOLE OF OUR ENVIRONMENT – THE ENTIRETY OF OUR LANDSCAPES AND TOWNSCAPES.

‘IT IS THE COLLECTIVE MEMORY, CONTAINING AN INFINITY OF STORIES, SOME ANCIENT, SOME RECENT: STORIES WRITTEN IN STONE, BRICK, WOOD, GLASS, STEEL; STORIES INSCRIBED IN THE FIELD PATTERNS, HEDGEROWS, DESIGNED LANDSCAPES AND OTHER FEATURES OF THE COUNTRYSIDE’ (A FORCE FOR OUR FUTURE¹).

IT IS THE VISIBLE EXPRESSION OF PAST PATTERNS OF TRADE, RELIGION, INDUSTRY, FARMING, WARFARE, RECREATION AND COMMUNICATION. IT IS AS MUCH A CULTURAL RECORD AND A RESOURCE FOR MODERN INTERPRETATION AS IT IS A SET OF QUANTIFIABLE REMAINS FROM THE PAST. TO BORROW A PHRASE FROM THE REGIONAL ECONOMIC STRATEGY, IT IS A SPRINGBOARD TO OUR FUTURE².

1.4 THIS STRATEGY AIMS TO RAISE AWARENESS OF THE IMPORTANCE OF THE HISTORIC ENVIRONMENT IN OUR EVERYDAY LIVES. IT AIMS TO ASSIST DECISION-MAKERS ACROSS THE SOUTH WEST – THE HISTORIC ENVIRONMENT SHOULD BE SEEN AS A KEY STRENGTH OF THE REGION, ONE THAT IS FUNDAMENTAL TO SUSTAINABLE DEVELOPMENT.

WHY DO WE NEED A STRATEGY FOR THE HISTORIC ENVIRONMENT?

1.5 FEW WOULD DISAGREE THAT WE SHOULD CONSERVE THE MOST IMPORTANT HISTORIC SITES. THE RICH RITUAL LANDSCAPE OF STONEHENGE, THE STARK REMAINS OF THE CORNISH TIN MINING INDUSTRY, THE ELEGANT BEAUTY OF STOURHEAD AND THE SOARING GRACE OF WELLS CATHEDRAL ALL DESERVE THEIR PLACE AMONG OUR MOST TREASURED HISTORIC SITES. THERE IS A DANGER, HOWEVER, THAT BY CONCENTRATING ON THE REGIONAL OR EVEN NATIONAL GEMS WE LOSE SIGHT OF THE VALUE AND SIGNIFICANCE OF THE WIDER HISTORIC ENVIRONMENT. THE LATTER IS AN ASSET AND AN OPPORTUNITY WHICH SHOULD PLAY A CENTRAL ROLE IN THE WAY THAT THE REGION CONTINUES TO DEVELOP AND GROW.

1.6 THIS STRATEGY AIMS TO CHANGE THE WAY WE PERCEIVE AND VALUE THE HISTORIC ENVIRONMENT OF THE SOUTH WEST.

1.7 AT THE HEART OF THE STRATEGY IS THE RECOGNITION THAT THE ENTIRE ENVIRONMENT IS HISTORIC. THOUSANDS OF YEARS OF HUMAN ACTIVITY HAVE CREATED PATTERNS OF SETTLEMENT AND LAND USE THAT CLOSELY REFLECT THE PHYSICAL ENVIRONMENT, PARTICULARLY THE GEOLOGY AND TOPOGRAPHY, THE CLIMATE AND THE REGION’S PENINSULA LANDFORM. THE GRADUAL EVOLUTION OF SOCIETY, AND THE EBB AND FLOW OF SETTLEMENT AND AGRICULTURE, HAS CREATED AN



STONEHENGE, WILTSHIRE

PROPOSALS ARE BEING PROGRESSED TO REMOVE THE A303 FROM THE CORE OF THE WORLD HERITAGE SITE AND TO DEVELOP NEW VISITOR FACILITIES ON THE EDGE OF THE DESIGNATED AREA. WHEN COMPLETE, THE SCHEME WILL REUNITE STONEHENGE AND ITS SURROUNDING MONUMENTS IN THEIR NATURAL CHALK DOWNLAND SETTING AND PROVIDE RADICALLY IMPROVED VISITOR ACCESS. THOSE INVOLVED IN THE PROJECT INCLUDE THE DEPARTMENT FOR CULTURE, MEDIA AND SPORT, ENGLISH HERITAGE, THE NATIONAL TRUST, HERITAGE LOTTERY FUND, HIGHWAYS AGENCY, WILTSHIRE COUNTY COUNCIL AND SALISBURY DISTRICT COUNCIL. THIS STRONGLY LED AND CO-ORDINATED APPROACH WILL HELP TO ENSURE THAT STONEHENGE IS PRESERVED AND MANAGED IN A WAY BEFITTING ITS INTERNATIONAL IMPORTANCE.

PHOTOGRAPH (TOP) : © ENGLISH HERITAGE
(LEFT): © LUC



TOLCARNE BEACH, CORNWALL

TOURISM HAS PLAYED A KEY ROLE IN SHAPING MANY COASTAL SETTLEMENTS IN THE SOUTH WEST, SUCH AS HERE AT TOLCARNE BEACH IN CORNWALL.

PHOTOGRAPH: © LUC

ENVIRONMENT THAT REFLECTS MANY INTERRELATED LAYERS OF HUMAN HISTORY.

1.8 THIS KIND OF APPROACH REQUIRES A FULLER APPRECIATION OF WHY THE HISTORIC ENVIRONMENT MATTERS:

- THE EXTENT, RICHNESS AND VARIETY THE SOUTH WEST'S HISTORIC ENVIRONMENT IS A UNIQUE AND IRREPLACEABLE ASPECT OF THE REGION'S CHARACTER;
- THE HISTORIC ENVIRONMENT IS BOUND CLOSELY TO THE SENSE OF IDENTITY, REGIONALLY AND PARTICULARLY MORE LOCALLY;
- THE HISTORIC ENVIRONMENT MAKES A SIGNIFICANT CONTRIBUTION TO THE QUALITY OF PEOPLE'S EVERYDAY LIVES;
- THE HISTORIC ENVIRONMENT CONTRIBUTES TO ECONOMIC SUCCESS BY ITS ATTRACTIVENESS TO COMMERCIAL INTERESTS, THROUGH THE EMPLOYMENT AND WEALTH GENERATED BY ITS MANAGEMENT AND BY PROVIDING THE FOCUS FOR MANY BROWNFIELD REGENERATION SCHEMES;
- THE HISTORIC ENVIRONMENT UNDERPINS THE IMPORTANCE OF THE SOUTH WEST AS A DESTINATION FOR TOURISM AND RECREATION. RECENT RESEARCH UNDERTAKEN FOR THE NATIONAL TRUST SUGGESTED THAT OF THE 16 MILLION HOLIDAY TRIPS TO THE SOUTH WEST EACH YEAR, ABOUT 12.5 MILLION WERE ATTRACTED, AT LEAST IN PART, BY THE HISTORIC ENVIRONMENT³. THESE TRIPS GENERATED AN ANNUAL SPEND OF £2.3 BILLION, SUPPORTING 54,000 FULL TIME EQUIVALENT JOBS. TOURISM MORE WIDELY BRINGS AN ESTIMATED £5 BILLION INTO THE REGION EACH YEAR. SET IN THESE TERMS, THE HISTORIC ENVIRONMENT EVIDENTLY MAKES A SIGNIFICANT CONTRIBUTION TO THE REGIONAL ECONOMY.

1.9 THIS FINAL POINT IS OF PARTICULAR IMPORTANCE. POLICIES ARE INCREASINGLY RECOGNISING THAT THE ENVIRONMENT AS A WHOLE, AND THE HISTORIC ENVIRONMENT IN PARTICULAR, IS A POWERFUL ECONOMIC DRIVER. IT INFLUENCES WHERE WE WANT TO WORK, LIVE AND RELAX. IT UNDERPINS OUR QUALITY OF LIFE.

ABOUT THIS STRATEGY

1.10 THIS IS THE FIRST VERSION OF THE STRATEGY FOR THE HISTORIC ENVIRONMENT IN THE SOUTH WEST. IT HAS BEEN PREPARED ON BEHALF OF THE HISTORIC ENVIRONMENT FORUM FOR THE SOUTH WEST. THE FORUM IS RESPONSIBLE FOR PROMOTING AND MONITORING ITS USE ACROSS THE REGION. A KEY AIM IS TO RAISE AWARENESS AND APPRECIATION OF THE SIGNIFICANCE OF THE HISTORIC ENVIRONMENT AND TO PROMOTE ITS INTEGRATION WITH OTHER AREAS OF POLICY MAKING AND IMPLEMENTATION. THE STRATEGY SETS OUT A VISION FOR THE FUTURE OF THE SOUTH WEST'S HISTORIC ENVIRONMENT. IT BUILDS ON THE MANY SUCCESSES OF THE PAST, IDENTIFIES AREAS WHERE ACTION IS REQUIRED AND SETS OUT AN AGENDA FOR FUTURE RESEARCH AND CO-OPERATION.

1.11 THE PREPARATION OF THE STRATEGY REFLECTS A NUMBER OF FACTORS INCLUDING:

- THE CREATION OF AN ENGLISH HERITAGE REGIONAL OFFICE, THEREBY CREATING THE NEED FOR A FRAMEWORK THAT INTERPRETS NATIONAL POLICIES IN THE REGIONAL CONTEXT;
- THE GROWING IMPORTANCE OF THE REGIONS AS A MEANS OF BRINGING FORWARD AND APPLYING

NATIONAL LEVEL POLICIES ACROSS A RANGE OF POLICY AREAS;

- THE PREPARATION OF 'SIBLING' REGIONAL STRATEGIES COVERING OTHER TOPIC AREAS (FOR EXAMPLE ECONOMIC DEVELOPMENT, CULTURE, ETC.) AND THE IMPORTANCE OF ENSURING THAT THE HISTORIC ENVIRONMENT IS CONSIDERED IN THE SAME WAY.

1.12 PREPARATION OF THIS STRATEGY REFLECTS EXISTING KNOWLEDGE.

IT THEREFORE REPRESENTS THE STARTING POINT IN THE DEVELOPMENT AND REFINEMENT OF A REGIONAL STRATEGY. OVER THE LIFESPAN OF THIS STRATEGY, FURTHER RESEARCH AND ANALYSIS WILL HELP CONSOLIDATE THE FOUNDATIONS OF THIS APPROACH, ALLOWING AIMS AND OBJECTIVES TO BE REFINED FURTHER.

1.13 THE STRATEGY IS DESIGNED FOR A WIDE AUDIENCE. WHILE IT PROVIDES A FRAMEWORK TO DIRECT THE WORK OF ORGANISATIONS IN THE 'HERITAGE SECTOR', IT AIMS TO INFORM THE WORK OF A MUCH BROADER CONSTITUENCY. THIS INCLUDES POLICY AND DECISION-MAKERS AT REGIONAL, COUNTY AND DISTRICT LEVELS; AND PEOPLE WORKING IN TOURISM, RECREATION, EDUCATION AND REGENERATION. SUCH AREAS DRAW ON THE HISTORIC ENVIRONMENT AND HAVE THE POTENTIAL TO RAISE AWARENESS, UNDERSTANDING AND APPRECIATION STILL FURTHER.

1.14 THE STRATEGY WILL BE REVIEWED EVERY FIVE YEARS, THOUGH THE REGIONAL PRIORITIES AND RECOMMENDATIONS WILL BE REVIEWED ANNUALLY IN ORDER TO MEASURE PROGRESS.



**LEFT
ISLES OF SCILLY**

ENGLISH HERITAGE HAS PROVIDED FUNDING TO THE ISLES OF SCILLY COUNCIL OVER THE LAST FIVE YEARS TO ASSIST IN THE REPAIR AND REFURBISHMENT OF TRADITIONAL BUILDINGS. THIS ALSO INCLUDES AN ELEMENT OF SKILLS TRAINING FOR LOCAL BUILDERS AND THE PROVISION OF EDUCATIONAL MATERIAL TO PROMOTE THE ISLANDS' HERITAGE.

PHOTOGRAPH © CORNWALL COUNTY COUNCIL

- 2.1 THE CHALLENGE OF THIS STRATEGY IS TO ENCOURAGE A WIDER RECOGNITION OF THE OUTSTANDING QUALITY OF THE SOUTH WEST'S HISTORIC ENVIRONMENT AND ITS CONTRIBUTION TO THE REGION'S QUALITY OF LIFE, ITS POPULARITY AS A PLACE TO LIVE, WORK AND VISIT, AND AS A RESULT, ITS CONTRIBUTION TO THE REGION'S ECONOMIC VITALITY.
- 2.2 IT IS ESSENTIAL TO PROMOTE UNDERSTANDING AND AWARENESS OF THE HISTORIC ENVIRONMENT AMONGST THOSE WHOSE AREAS OF RESPONSIBILITY HAVE A DIRECT OR INDIRECT BEARING UPON IT. THERE IS A NEED TO CONTINUE DEVELOPING AND SHARING KNOWLEDGE TO ENSURE THAT THE MOST IMPORTANT AND SIGNIFICANT ELEMENTS OF IT ARE CONSERVED AND MANAGED APPROPRIATELY. CENTRAL TO ALL THESE AIMS IS THE NEED TO ENSURE THAT OTHER REGIONAL, COUNTY AND DISTRICT STRATEGIES AND PLANS RECOGNISE AND RESPOND TO THE QUALITY AND RICHNESS OF THE HISTORIC ENVIRONMENT. EQUALLY, MANAGEMENT OF THE HISTORIC ENVIRONMENT SHOULD, WHEREVER POSSIBLE, CONTRIBUTE TO THE OBJECTIVES OF OTHER STRATEGIES.
- 2.3 THE HISTORIC ENVIRONMENT IS DYNAMIC. ON THE ONE HAND OUR KNOWLEDGE GROWS AS MORE HISTORIC SITES ARE DISCOVERED AND RESEARCHED; INCREASING OUR UNDERSTANDING OF THE WIDER HISTORIC ENVIRONMENT. WITH THE PASSING OF TIME, MORE RECENT BUILDINGS, SITES AND LANDSCAPES ARE APPRECIATED FOR THEIR HISTORIC AND CULTURAL SIGNIFICANCE. AT THE SAME TIME, PARTS OF THE HISTORIC ENVIRONMENT GRADUALLY DECAY OR ARE LOST AS A RESULT OF DEVELOPMENT OR OTHER CHANGES IN LAND USE.
- 2.4 THE HISTORIC ENVIRONMENT IS OF COURSE IRREPLACEABLE. WHILE THIS SHOULD NOT PREVENT CHANGE, IT DOES MEAN

THAT WE NEED TO DEVELOP AS FULL AN UNDERSTANDING OF THE HISTORIC ENVIRONMENT AS POSSIBLE AND TO USE THIS KNOWLEDGE TO GUIDE CHANGE. DEVELOPING OUR KNOWLEDGE, AND THE MECHANISMS TO MAKE EFFECTIVE USE OF THIS INFORMATION MUST THEREFORE CONTINUE TO BE A PRIORITY.

AN OVERVIEW OF THE SOUTH WEST'S HISTORIC ENVIRONMENT

- 2.5 THE HISTORIC ENVIRONMENT OF THE SOUTH WEST IS THE PRODUCT OF A COMPLEX PROCESS OF INTERACTION BETWEEN HUMANS AND THE PHYSICAL ENVIRONMENT, TAKING PLACE OVER MANY MILLENNIA. AS THE LARGEST OF ENGLAND'S NINE REGIONS, THE SIZE AND SHAPE OF THE SW ENSURES THAT VARIATIONS WITHIN THE REGION ARE CONSIDERABLE. PREPARATION OF THIS STRATEGY HAS REFLECTED THIS DIVERSITY. AS A FIRST STEP, A HISTORIC LANDSCAPE CHARACTER TYPES MAP HAS BEEN PREPARED FOR THE REGION. THE MAP HAS BEEN BASED ON AN ANALYSIS OF THE VARIOUS TYPES OF LAND USE, FOR EXAMPLE: AGRICULTURAL LAND ENCLOSED AT VARIOUS DIFFERENT PERIODS; ANCIENT AND RECENT WOODLAND; URBAN, INDUSTRIAL AND ORNAMENTAL (SEE PARAGRAPHS 3.23 TO 3.29 FOR MORE INFORMATION).
- 2.6 ONE OF THE KEY ELEMENTS OF THE REGION'S IDENTITY IS THE PENINSULA LANDFORM. AS WELL AS PROVIDING AN INSTANTLY RECOGNISABLE REGIONAL ICON, THIS HAS INFLUENCED SIGNIFICANTLY THE PATTERN OF SETTLEMENT AND COMMUNICATION.
- 2.7 THE LONG AND VARIED COASTLINE HAS RESULTED IN A STRONG MARITIME TRADITION. FISHING, TRADE AND NAVAL DEFENCE



HAVE LONG BEEN CENTRAL TO THE PATTERN OF SETTLEMENT AND THE REGION'S IDENTITY. THESE ACTIVITIES ARE REFLECTED IN THE PRESENCE OF HARBOURS, JETTIES, COASTAL FORTIFICATIONS, TIDE MILLS AND COASTAL SETTLEMENTS.

2.8 THE PENINSULA CREATES AN INCREASING SENSE OF REMOTENESS AS ONE MOVES WEST. WHILST THE EASTERNMOST PARTS OF THE REGION SHARE MANY OF THE CULTURAL AND HISTORICAL CHARACTERISTICS OF THE REST OF SOUTHERN ENGLAND, THE WESTERN PARTS OF THE SOUTH WEST HAVE A FAR STRONGER LOCAL IDENTITY. THEIR REMOTENESS, ALLIED TO THE HISTORY OF SEABORNE TRADE AND COMMUNICATION, HAS RESULTED IN STRONG CULTURAL ASSOCIATIONS WITH OTHER COUNTRIES ALONG THE NORTH ATLANTIC SEABOARD. DESPITE TRANSPORT IMPROVEMENTS THESE PARTS OF THE REGION STILL HAVE A SENSE OF REMOTENESS.

2.9 THE WESTERN AND EXPOSED LOCATION OF THE PENINSULA HAS ALSO HAD AN IMPORTANT INFLUENCE ON THE HISTORY AND PATTERN OF LAND USE AND SETTLEMENT. MILD, WET AND WINDY ATLANTIC WEATHER SYSTEMS HAVE HELPED SHAPE THE PATTERN OF VEGETATION AND EMPHASISED THE IMPORTANCE OF SHELTERED HARBOURS AND VALLEY LOCATIONS. CLOSE TO THE COASTS, THE TEMPERATE CLIMATE HAS ALSO ALLOWED THE CREATION OF EXOTIC GARDENS.

2.10 THE CHARACTER OF THE REGION IS ALSO INFLUENCED BY THE REMARKABLE VARIETY OF ROCK TYPES AND THE INFLUENCE OF CHANGES IN CLIMATE AND SEA LEVEL. THE REGION'S GEOLOGY IS CHARACTERISED BY SOFTER ROCKS IN THE EAST, GIVING WAY TO HARDER ROCKS IN THE WEST. IT RANGES FROM THE EXTENSIVE CHALK DOWNLANDS OF WILTSHIRE AND DORSET, THE VARIETY OF LIMESTONE HILLS (INCLUDING THE

COTSWOLDS, MENDIPS AND THE ISLE OF PORTLAND) AND THE PROMINENT GRANITIC MOORLANDS OF BODMIN MOOR AND DARTMOOR, TO THE MORE SUBTLE LOWLAND LANDSCAPES OF CLAYS, SANDSTONE, MUDSTONES AND ALLUVIAL DEPOSITS. THESE HAVE RESULTED IN VARYING LANDFORMS AND DIFFERENCES IN FERTILITY, DRAINAGE AND EXPOSURE.

2.11 THESE VARIATIONS HAVE, IN TURN, ALL HAD AN INFLUENCE ON THE PATTERN OF DEVELOPMENT AND LAND USE. SOME AREAS HAVE LONG BEEN FAVOURED DUE TO THEIR NATURAL FERTILITY AND OTHERS REFLECT THE ADVENT OF ADVANCES IN LAND MANAGEMENT, INCLUDING DRAINAGE AND ENCLOSURE. CLIMATIC CHANGES HAVE ALSO HAD THEIR EFFECT WITH SOME OF THE HIGHER DOWNLANDS AND MOORLANDS BEING OCCUPIED UNDER FAVOURABLE CONDITIONS, AND SUBSEQUENTLY ABANDONED AS THE CLIMATE DETERIORATED. THE RETREAT OF AGRICULTURE, COMBINED WITH RELATIVE REMOTENESS, HAS CONTRIBUTED TO THE SURVIVAL OF MANY PARTS OF THE HISTORIC ENVIRONMENT. CHANGES IN SEA LEVEL ALLIED TO DRAINAGE AND RECLAMATION HAVE HAD A PARTICULARLY SIGNIFICANT INFLUENCE ON THE PATTERN OF AGRICULTURE AND SETTLEMENT IN SOME OF THE LOWER LYING AREAS ALONG THE SEVERN ESTUARY.

2.12 VARIATIONS IN GEOLOGY ARE ALSO REFLECTED IN PATTERNS OF SETTLEMENT AND COMMUNICATION. KEY INFLUENCES HAVE BEEN: THE AVAILABILITY OF WATER SUPPLY; THE IMPORTANCE OF AVOIDING AREAS LIABLE TO FLOODING; THE NEED FOR SHELTER FROM PREVAILING WINDS; THE RELATIONSHIP WITH KEY MARKET AND ADMINISTRATIVE CENTRES; THE AVAILABILITY OF NATURAL RESOURCES INCLUDING MINERALS; AND COMMUNICATION ROUTES. THE INFLUENCE OF THESE FACTORS IS PARTICULARLY EVIDENT IN SOME OF THE MORE UPLAND PARTS OF THE



SALISBURY

SALISBURY HAS ONE OF THE FINEST MEDIEVAL CATHEDRALS IN BRITAIN. STARTED IN 1220, IT WAS COMPLETED BY 1258, WITH THE SPIRE, THE TALLEST IN ENGLAND, ADDED A GENERATION LATER. ATTRACTING AN ESTIMATED 600,000 VISITORS EACH YEAR, THE CATHEDRAL DOMINATES BOTH THE TOWN AND SURROUNDING COUNTRYSIDE.

PHOTOGRAPH: © ENGLISH HERITAGE

REGION WHERE ENVIRONMENTAL CONSTRAINTS OFTEN LIMITED SETTLEMENT TO WELL DEFINED LOCATIONS. THE CHALK DOWNLANDS, FOR EXAMPLE, TEND TO HAVE VILLAGES AND TOWNS CONCENTRATED IN THE SHELTERED AND WATERED VALLEYS. SIMILARLY, HILLS LIKE THE MENDIPS ARE ENCIRCLED BY A SERIES OF SPRINGLINE VILLAGES AND HAMLETS. IN THE GENTLER AND MORE FERTILE LOWLAND AREAS, SETTLEMENT TENDED TO REFLECT THE INFLUENCE OF ADMINISTRATIVE, MARKET AND COMMUNICATION FACTORS MORE STRONGLY; THOUGH PRIOR TO THE INTRODUCTION OF MORE EFFECTIVE DRAINAGE TECHNIQUES VILLAGES TENDED TO AVOID THE LOWER LYING AND POORER DRAINING LAND.

- 2.13 VARIATIONS IN HISTORIC PATTERNS OF CONSTRUCTION, THE AVAILABILITY OF DIFFERENT BUILDING MATERIALS, AND LOCAL TRADITIONS AND BUILDING TECHNIQUES HAVE A TANGIBLE EFFECT ON THE SOUTH WEST'S HISTORIC ENVIRONMENT. THE AVAILABILITY OF HARD ROCK AND SLATES IN CORNWALL IS REFLECTED IN THE PREDOMINANCE OF STONE BUILDINGS WITH SLATE ROOFS. THE COTSWOLDS ARE SIMILARLY CHARACTERISED BY EXTENSIVE USE OF THE MELLOW OOLITIC LIMESTONES AND THE AREA AROUND WEYMOUTH BY THE EXTENSIVE USE OF PORTLAND STONE. DIFFERENT SOLUTIONS WERE REQUIRED IN AREAS LACKING A LOCAL SUPPLY OF GOOD BUILDING STONE. THE CHALK AREAS, FOR EXAMPLE, TEND TO BE CHARACTERISED BY THE USE OF TIMBER FRAMES, BLOCKS OF CHALK, KNAPPED FLINT AND SOME BRICK WITH THATCHED ROOFS. DEVON HAS THE ONLY SIGNIFICANT CONCENTRATION OF COB HOUSES IN THE UK. IT ALSO HAS THE LARGEST NUMBER OF MEDIEVAL LONG HOUSES IN THE COUNTRY.



GODOLPHIN HOUSE, HELSTON, CORNWALL

THE GODOLPHINS MADE THEIR FORTUNE FROM THE LOCAL TIN-MINING INDUSTRY, BECOMING ONE OF THE LEADING FAMILIES OF WEST CORNWALL. TODAY'S GRANITE-BUILT STRUCTURE IS ONLY PART OF WHAT WAS ONCE THEIR EXTENSIVE ANCESTRAL HOME. A MAJOR SCHEME OF STRUCTURAL REPAIRS TO THE MEDIEVAL GRADE I LISTED HOUSE HAS INCLUDED IMPROVEMENTS IN ACCESS FOR DISABLED PEOPLE, AND A NUMBER OF CONTEMPORARY DESIGN ADDITIONS, BOTH INSIDE AND OUT. FURTHER WORK, INCLUDING THE REVIVAL OF THE LATE-MEDIEVAL GARDEN IS PLANNED IN THE FUTURE.

PHOTOGRAPH: © GODOLPHIN HOUSE



2.14 THESE FACTORS COMBINE WITH BUILDING TYPES - WHICH IN TURN REFLECT RELIGION, CIVIC PRIDE, TRADE, INDUSTRY, DEFENCE, AGRICULTURE AND MINERAL RESOURCES - TO SHAPE THE LOCAL AND REGIONAL DISTINCTIVENESS OF THE HISTORIC BUILT ENVIRONMENT.

2.15 GEOGRAPHICAL VARIATIONS IN LAND USE AND SETTLEMENT ARE ACCOMPANIED BY A REMARKABLE LAYERING OF HISTORIC REMAINS WITHIN THE SOUTH WEST. THIS SO-CALLED 'TIME DEPTH' IS EVIDENT IN AREAS SUCH AS BODMIN MOOR WHERE PREHISTORIC RITUAL MONUMENTS AND FIELD SYSTEMS, MEDIEVAL AND NINETEENTH CENTURY FIELDS LIE NEXT TO THE WHEEL ENGINE-HOUSES AND TIPS ASSOCIATED WITH TIN MINING AND CHINA CLAY QUARRYING. SIMILARLY, THE CHALK DOWNS ARE CHARACTERISED BY RITUAL PREHISTORIC LANDSCAPES (OF WHICH STONEHENGE AND ITS SURROUNDINGS ARE THE BEST KNOWN ELEMENTS), MEDIEVAL HUNTING FORESTS, NINETEENTH CENTURY ENCLOSURES AND TWENTIETH CENTURY MILITARY TRAINING INFRASTRUCTURE.

2.16 THE REGION INCLUDES A NUMBER OF ENGLAND'S MOST IMPORTANT HISTORIC TOWNS AND CITIES, INCLUDING BRISTOL, BATH, SWINDON, SALISBURY, EXETER, PLYMOUTH AND GLOUCESTER. EACH HAS PLAYED A SIGNIFICANT ROLE IN THE HISTORIC DEVELOPMENT OF THE SOUTH WEST AND THE UK MORE WIDELY. THEIR ORIGINS REFLECT A VARIETY OF INFLUENCES AND INCLUDE MILITARY AND NAVAL CENTRES, ADMINISTRATION, INDUSTRY, RELIGION, TRADE AND COMMERCE.

2.17 TRANSPORT AND COMMUNICATION HAVE ALSO LEFT THEIR MARK ACROSS THE REGION. PREHISTORIC RIDGEWAY TRACKS ALONG THE CHALK DOWNS OF WILTSHIRE AND DORSET AND WETLAND CAUSEWAYS SUCH AS THE SWEET TRACK IN THE SOMERSET LEVELS, SIT ALONGSIDE ROMAN ROADS, OLD DROVE ROADS, SUNKEN DEVON LANES AND THE VICTORIAN GRANDEUR OF THE GREAT WESTERN RAILWAY.

2.18 A DISTINCT FEATURE OF THE REGION, HOWEVER, IS THE LACK OF LARGE CONURBATIONS. BRISTOL IS NOW THE REGIONAL CENTRE WITH A POPULATION OF 500,000, WHILST PLYMOUTH, THE IMPORTANT MARITIME CENTRE, HAS A POPULATION OF 200,000. EXETER, BATH, SWINDON, GLOUCESTER AND CHELTENHAM ALL HAVE POPULATIONS OF ABOUT 100,000. THERE ARE COMPARATIVELY FEW MEDIUM SIZED SETTLEMENTS BUT A VERY LARGE NUMBER OF SMALL MARKET TOWNS, VILLAGES AND HAMLETS, MANY WITH MEDIEVAL ORIGINS. WHILST THE MAJORITY OF THESE HAVE RETAINED THEIR HISTORIC MARKET PLACES, STREET PATTERNS, COMMERCIAL, AND MUNICIPAL BUILDINGS, MANY ARE EXPERIENCING PRESSURE FOR GROWTH, PARTICULARLY IN AREAS AROUND THE LARGER AND MORE PROSPEROUS TOWNS AND CITIES. ASIDE FROM THE BOURNEMOUTH/POOLE AND TORBAY CONURBATIONS, MOST OF THE REGION'S MANY SEASIDE RESORTS ARE RELATIVELY SMALL.

LEFT
MAIDEN CASTLE, DORSET

THIS IS THE FINEST AND LARGEST IRON AGE HILL FORT IN EUROPE. ITS BANKS ENCLOSE AN AREA THE SIZE OF 50 FOOTBALL PITCHES, WHICH WOULD HAVE BEEN HOME TO ABOUT 200 FAMILIES. WHEN THE SITE WAS EXCAVATED IN THE 1930S AND 1980S IT PROVIDED IMPORTANT DETAILS ABOUT THE LIVES OF THESE COMMUNITIES, AS WELL AS DRAMATIC PROOF OF BRITISH RESISTANCE TO THE ROMAN INVASION IN AD 43. OWNED AND MANAGED BY ENGLISH HERITAGE, THE SITE IS OPEN ALL YEAR.

PHOTOGRAPH: © ENGLISH HERITAGE



KILVE, SOMERSET

A DETAILED ARCHAEOLOGICAL INVESTIGATION AND ASSESSMENT OF THE BUILDING REMAINS AT KILVE, SOMERSET, WAS UNDERTAKEN BETWEEN JULY AND SEPTEMBER 2003 AS PART OF THE ENGLISH HERITAGE ARCHAEOLOGICAL SURVEY OF THE QUANTOCK HILLS AREA OF OUTSTANDING NATURAL BEAUTY. THE REMAINS ARE THOUGHT TO REPRESENT A SUBSTANTIAL MEDIEVAL MANOR HOUSE WITH ITS ASSOCIATED CHURCH LYING WITHIN AN EXTENSIVE ARCHAEOLOGICAL LANDSCAPE OF FORMER MEDIEVAL GARDENS, ORCHARDS, A SEQUENCE OF FISHPONDS AND DEERPARK. THE REINTERPRETATION OF THIS SITE HAS HIGHLIGHTED BOTH ITS SIGNIFICANCE AS AN EARLY MEDIEVAL SURVIVAL AND GIVEN US A BETTER UNDERSTANDING OF THE MEDIEVAL LANDSCAPE OF THE NORTHERN EDGE OF THE QUANTOCK HILLS.

PHOTOGRAPH: © ENGLISH HERITAGE

PROTECTED SITES IN THE SOUTH WEST

- 2.19 WHILE THE PREVIOUS PARAGRAPHS DEMONSTRATE THE RICH AND PERVASIVE NATURE OF THE HISTORIC ENVIRONMENT OF THE SOUTH WEST, AN OVERVIEW OF PROTECTED SITES PROVIDES AN INDICATION OF ITS SIGNIFICANCE, BOTH IN ITS OWN RIGHT AND IN TERMS OF OTHER ENGLISH REGIONS. THIS IS AMPLY REFLECTED IN THE STATE OF THE HISTORIC ENVIRONMENT REPORT 2002: SOUTH WEST⁴.
- 2.20 THE SOUTH WEST HAS A REMARKABLY HIGH NUMBER OF PROTECTED SITES. ALTHOUGH THE REGION ACCOUNTS FOR JUST 19% OF THE LAND AREA OF ENGLAND, IT HAS 39% OF THE COUNTRY'S SCHEDULED ANCIENT MONUMENTS, 26% OF ENGLISH HERITAGE PROPERTIES IN CARE, 24 % OF ALL LISTED BUILDINGS AND 285 REGISTERED HISTORIC PARKS AND GARDENS, REPRESENTING 20% OF THE ENGLISH TOTAL. THE REGION ALSO HAS THREE WORLD HERITAGE SITES, TWO OF WHICH (STONEHENGE AND AVEBURY, AND THE CITY BATH) HAVE BEEN DESIGNATED FOR THEIR HISTORIC SIGNIFICANCE, AND TWO FURTHER SITES ON THE GOVERNMENT'S 'TENTATIVE LIST' (CORNISH MINING SETTLEMENTS AND THE GREAT WESTERN RAILWAY). PERHAPS REFLECTING THE COMPARATIVELY RURAL CHARACTER OF THE REGION, THE SHARE OF CONSERVATION AREAS IS SLIGHTLY BELOW THE NATIONAL AVERAGE.

TABLE 2.1: ANALYSIS OF THE SOUTH WEST'S SCHEDULED ANCIENT MONUMENTS AND LISTED BUILDINGS

AUTHORITY AREA	SAM ITEMS	LISTED BUILDINGS	SAM ITEMS PER KM2	LISTED BUILDINGS PER KM2	POP PER SAM ITEM	POP PER LISTED BUILDING	GDP (£M) PER SAM ITEM	GDP (£M) PER LISTED BUILDING
BRISTOL CITY	28	2096	0.25	19.05	13600	182	222.29	2.97
BATH AND NE SOMERSET AND SOUTH GLOUCESTERSHIRE AND NORTH SOMERSET	223	6026	0.18	4.95	2709	100	31.30	1.16
GLOUCESTERSHIRE	673	12856	0.25	4.84	840	44	10.61	0.56
SWINDON	74	650	0.32	2.83	2435	277	43.80	4.99
WILTSHIRE CC	2473	12171	0.76	3.74	175	36	2.01	0.41
BOURNEMOUTH AND POOLE	52	470	0.47	4.23	5800	642	70.58	7.81
DORSET CC	2106	9439	0.83	3.72	186	41	1.84	0.41
SOMERSET CC	879	11601	0.25	3.36	567	43	6.05	0.46
CORNWALL AND SCILLY CC	3567	12581	1.00	3.53	141	40	1.12	0.32
PLYMOUTH	56	739	0.70	9.24	4304	326	51.96	3.94
TORBAY	32	863	0.51	13.70	4063	151	33.31	1.24
DEVON CC	5635	19033	0.86	2.90	125	37	1.18	0.35
SOUTH WEST TOTAL	15798	88525	0.66	3.71	312	56	3.55	0.63

2.21 TABLE 2.1 ANALYSES THE DISTRIBUTION OF SCHEDULED ANCIENT MONUMENT ITEMS AND LISTED BUILDINGS ACROSS THE SOUTH WEST, ACCORDING TO COUNTY COUNCIL AND

UNITARY AUTHORITY AREAS. IT PROVIDES INFORMATION ABOUT THE DISTRIBUTION OF PROTECTED ELEMENTS OF THE HISTORIC ENVIRONMENT WITHIN THE REGION.

2.22 THE NUMBER OF MONUMENTS AND BUILDINGS GIVES AN INDICATION OF THE WORK AND EXPENSE LIKELY TO BE INCURRED BY ENGLISH HERITAGE AND LOCAL AUTHORITIES. THOSE ADMINISTRATIVE AREAS WITH THE HIGHEST TOTAL NUMBER OF HERITAGE DESIGNATIONS ARE:

SCHEDULED ANCIENT MONUMENTS	LISTED BUILDINGS
<ul style="list-style-type: none"> DEVON CC CORNWALL AND SCILLY CC WILTSHIRE CC DORSET CC 	<ul style="list-style-type: none"> DEVON CC GLOUCESTERSHIRE CC CORNWALL AND SCILLY CC WILTSHIRE CC SOMERSET CC

2.23 THE ANALYSIS OF THE NUMBER OF SAM ITEMS AND LISTED BUILDINGS PER SQUARE KILOMETRE PROVIDE A GOOD GUIDE TO CULTURAL DIFFERENCES ACROSS THE REGION. THE TWO DATASETS ARE ALMOST EXACTLY OPPOSITE IN THEIR CONCENTRATIONS WITHIN THE SOUTH WEST. UPLAND AREAS TEND TO HAVE THE GREATEST CONCENTRATIONS OF MONUMENTS, ESPECIALLY IN LESS DEVELOPED PARTS OF THE REGION. TOWNS AND HISTORICALLY MORE PROSPEROUS AREAS HAVE GREATER NUMBERS OF HISTORICALLY IMPORTANT BUILDINGS. THE HIGHEST DENSITIES OF SAM ITEMS AND LISTED BUILDINGS ARE AS FOLLOWS:

SCHEDULED ANCIENT MONUMENTS	LISTED BUILDINGS
<ul style="list-style-type: none"> CORNWALL AND SCILLY CC DEVON CC DORSET CC WILTSHIRE CC PLYMOUTH UA 	<ul style="list-style-type: none"> BRISTOL UA TORBAY UA PLYMOUTH UA BATH AND NE SOMERSET AND SOUTH GLOUCESTERSHIRE AND NORTH SOMERSET GLOUCESTERSHIRE

2.24 THE ANALYSIS OF THE NUMBER OF SAM ITEMS AND LISTED BUILDING PER HEAD OF POPULATION GIVES AN INDICATION OF THE RELATIVE DEGREE OF BURDEN ACROSS THE REGION. LESS POPULOUS AREAS WILL HAVE FEWER RESOURCES TO SUPPORT AND GRANT AID DESIGNATED MONUMENTS AND BUILDINGS. THESE AREAS INCLUDE:

SCHEDULED ANCIENT MONUMENTS	LISTED BUILDINGS
<ul style="list-style-type: none"> DEVON CC CORNWALL AND SCILLY CC WILTSHIRE CC DORSET CC 	<ul style="list-style-type: none"> WILTSHIRE CC DEVON CC CORNWALL AND SCILLY CC DORSET CC SOMERSET CC GLOUCESTERSHIRE CC

2.25 THE ANALYSIS OF THE GROSS DOMESTIC PRODUCT (GDP) PER SAM ITEM AND LISTED BUILDING GIVES AN INDICATION OF THOSE AREAS LEAST ABLE TO SUPPORT THE CONSERVATION OF MONUMENTS AND BUILDINGS. THOSE WITH HIGHER DENSITIES OF DESIGNATIONS AND LOW GDP REQUIRE THE GREATEST SUPPORT FOR PRESERVATION AND MANAGEMENT AND INCLUDE:

SCHEDULED ANCIENT MONUMENTS	LISTED BUILDINGS
<ul style="list-style-type: none"> • CORNWALL AND SCILLY CC • DEVON CC • DORSET CC • WILTSHIRE CC 	<ul style="list-style-type: none"> • CORNWALL AND SCILLY CC • DEVON CC • WILTSHIRE CC • DORSET CC • SOMERSET CC

2.26 TAKEN TOGETHER, THESE FIGURES INDICATE THAT DEVON, CORNWALL AND SCILLY, WILTSHIRE AND DORSET HAVE THE HIGHEST CONSERVATION BURDEN AND THE GREATEST NEED FOR SUPPORT AND ASSISTANCE.

SO WHY IS THE HISTORIC ENVIRONMENT IMPORTANT?

2.27 WHILE THE INTRINSIC VALUE OF THE HISTORIC ENVIRONMENT HAS LONG BEEN RECOGNISED, THERE IS NOW GROWING AWARENESS OF ITS WIDER ECONOMIC, COMMUNITY AND CULTURAL IMPORTANCE. THE RANGE OF BENEFITS PROVIDED BY THE HISTORIC ENVIRONMENT INCLUDES:

FOR PEOPLE -

IT ENHANCES THE ENJOYMENT OF THEIR SURROUNDINGS

IT MAKES A SIGNIFICANT CONTRIBUTION TO THEIR QUALITY OF LIFE WHETHER OR NOT THE HISTORIC ITEMS ARE NATIONALLY RECOGNISED

IT IS AN ESSENTIAL ELEMENT IN INTERPRETING THE HISTORY AND DEVELOPMENT OF LOCAL IDENTITY

IT ENRICHES PEOPLE'S PERCEPTION OF THEIR OWN PERSONAL IDENTITY

IT PROVIDES A RICH LEARNING RESOURCE FOR PEOPLE OF ALL AGES

THE INFLUX OF VISITORS BRINGS AN UNDERSTANDING AND ACCEPTANCE OF CULTURAL DIVERSITY

FOR THE ECONOMY -

IT BRINGS MILLIONS OF VISITORS TO THE REGION WHO SPEND £5BN ANNUALLY, HELPING TO SUPPORT MANY THOUSANDS OF JOBS THROUGHOUT THE SOUTH WEST

IT OFTEN ACTS AS THE FOCAL POINT FOR REGENERATION INITIATIVES

ITS OUTSTANDINGLY HIGH QUALITY MAKES RELOCATION TO THE SW AN ATTRACTIVE PROPOSITION

ITS ONGOING MAINTENANCE, REPAIR AND MANAGEMENT CREATES MANY LOCAL JOBS

2.28 THE SOUTH WEST IS UNRIVALLED IN THE EXTENT, VARIETY AND PRESERVATION OF THE HISTORIC ENVIRONMENT – EXTENDING BEYOND THOSE SITES AND AREAS THAT ARE GIVEN STATUTORY PROTECTION. LANDSCAPES ACROSS THE REGION REFLECT THE TIME-DEPTH OF HUMAN SETTLEMENT. PREHISTORIC LANDSCAPES SUCH AS THOSE AROUND STONEHENGE AND ON DARTMOOR STAND ALONGSIDE THE SETTLEMENTS AND TRANSPORT INFRASTRUCTURE CREATED BY THE ROMANS, THE MEDIEVAL LANDSCAPES OF THE SOMERSET LEVELS, THE INDUSTRIAL LANDSCAPES ASSOCIATED WITH QUARRYING, TIN MINING, IRON SMELTING AND CHINA CLAY EXTRACTION, AND THE MORE UNIFORM FIELD PATTERNS ASSOCIATED WITH EIGHTEENTH AND NINETEENTH CENTURY PARLIAMENTARY ENCLOSURE. IT IS OFTEN THE COMBINED INFLUENCE OF FIELD BOUNDARIES, ANCIENT WOODLANDS, OLD ROADS AND TRACKS, THE LOCATION AND VERNACULAR OF BUILDINGS AND INDUSTRIAL SITES THAT SHAPES THE WIDER HISTORIC LANDSCAPE AND WHICH CONTRIBUTES TO LOCAL DISTINCTIVENESS. EQUALLY, LESS VISIBLE ELEMENTS OF THE HISTORIC ENVIRONMENT SUCH AS BURIED ARCHAEOLOGY, SUBMERGED LANDSCAPES AND ENCASED BUILDING FABRICS CAN FORM AN IMPORTANT PART OF LOCAL KNOWLEDGE AND CULTURE. MANY OF THESE FEATURES LACK ANY FORM OF STATUTORY PROTECTION.

2.29 THE HISTORIC ENVIRONMENT THEREFORE PROVIDES THE CONTEXT FOR OUR EVERYDAY LIVES, HAS SHAPED AND INFLUENCED OUR REGIONAL, LOCAL AND CULTURAL IDENTITY AND, ULTIMATELY, CONTRIBUTES TO OUR QUALITY OF LIFE. HISTORIC BUILDINGS AND LANDSCAPES CONTINUE TO BE VALUED AS PLACES TO LIVE, WORK AND RELAX. NATIONAL SURVEYS CONFIRM THE IMPORTANCE OF THE HISTORIC ENVIRONMENT TO PEOPLE'S EVERYDAY LIVES. A MORI SURVEY

OF 3000 PEOPLE, FOR EXAMPLE, FOUND THAT 96% THINK THE HISTORIC ENVIRONMENT IS IMPORTANT TO TEACH THEM ABOUT THE PAST, THAT 88% THINK IT IS IMPORTANT IN CREATING JOBS AND BOOSTING THE ECONOMY AND THAT 85% THINK IT IS IMPORTANT IN PROMOTING URBAN REGENERATION⁵. FURTHERMORE, WITHIN THE SOUTH WEST, EACH YEAR ABOUT 55,000 EDUCATIONAL VISITS ARE MADE TO ENGLISH HERITAGE PROPERTIES ALONE, WHILE THE NATIONAL TRUST RECEIVES OVER 100,000 VISITS A YEAR. THESE ARE ALL SIGNIFICANT FIGURES AND SHOULD INFORM THE WAY WE MANAGE THE HISTORIC ENVIRONMENT OF THIS AND OTHER REGIONS.

2.30 THE SOUTH WEST COMPRISES ONE OF THE MOST POPULAR DESTINATIONS FOR TOURISM AND RECREATION IN THE UK. THE HISTORIC ENVIRONMENT, COMPRISING THE BUILT HERITAGE, HISTORIC PARKS AND GARDENS, ARCHAEOLOGICAL SITES, AND ITS CONTRIBUTION TO THE WIDER SCENIC QUALITY AND CHARACTER OF THE AREA, IS FUNDAMENTAL TO THE POPULARITY OF THE REGION. SOME 45 MILLION PEOPLE VISIT ATTRACTIONS IN THE REGION AND IT HAS BEEN ESTIMATED THAT ABOUT 60% OF PAYING VISITS ARE MADE TO HISTORIC BUILDINGS, GARDENS OR SITES. THE ENGLISH TOURISM COUNCIL IN 1998 ESTIMATED THAT THE SOUTH WEST HAD SOME 8.5 MILLION VISITS TO HISTORIC PROPERTIES, ACCOUNTING FOR ALMOST 15% OF THE NATIONAL TOTAL AND SECOND ONLY TO LONDON. IT IS ESTIMATED THAT VISITORS TO THE REGION SPEND SOME £5 BILLION ANNUALLY, ACCOUNTING FOR 10% OF THE REGION'S GDP AND EMPLOYING 10% OF THE WORKFORCE.

2.31 WHILE TOURISM AND RECREATION ALREADY MAKE AN IMPORTANT CONTRIBUTION TO THE REGIONAL ECONOMY, IT IS IMPORTANT TO ACKNOWLEDGE THE FACT THAT SIGNIFICANT PARTS OF THE SOUTH WEST ARE THE SUBJECT OF ECONOMIC AND SOCIAL REGENERATION INITIATIVES. THE HISTORIC



OLD SARUM

THIS GRAND MEDIEVAL JOUST HELD AT OLD SARUM, WILTSHIRE, DURING A SUMMER WEEKEND ATTRACTED OVER 3,500 VISITORS. ENGLISH HERITAGE ORGANISE OVER 100 EVENTS IN THE SOUTH WEST EACH YEAR WHICH ARE ATTENDED BY OVER 45,000 PEOPLE

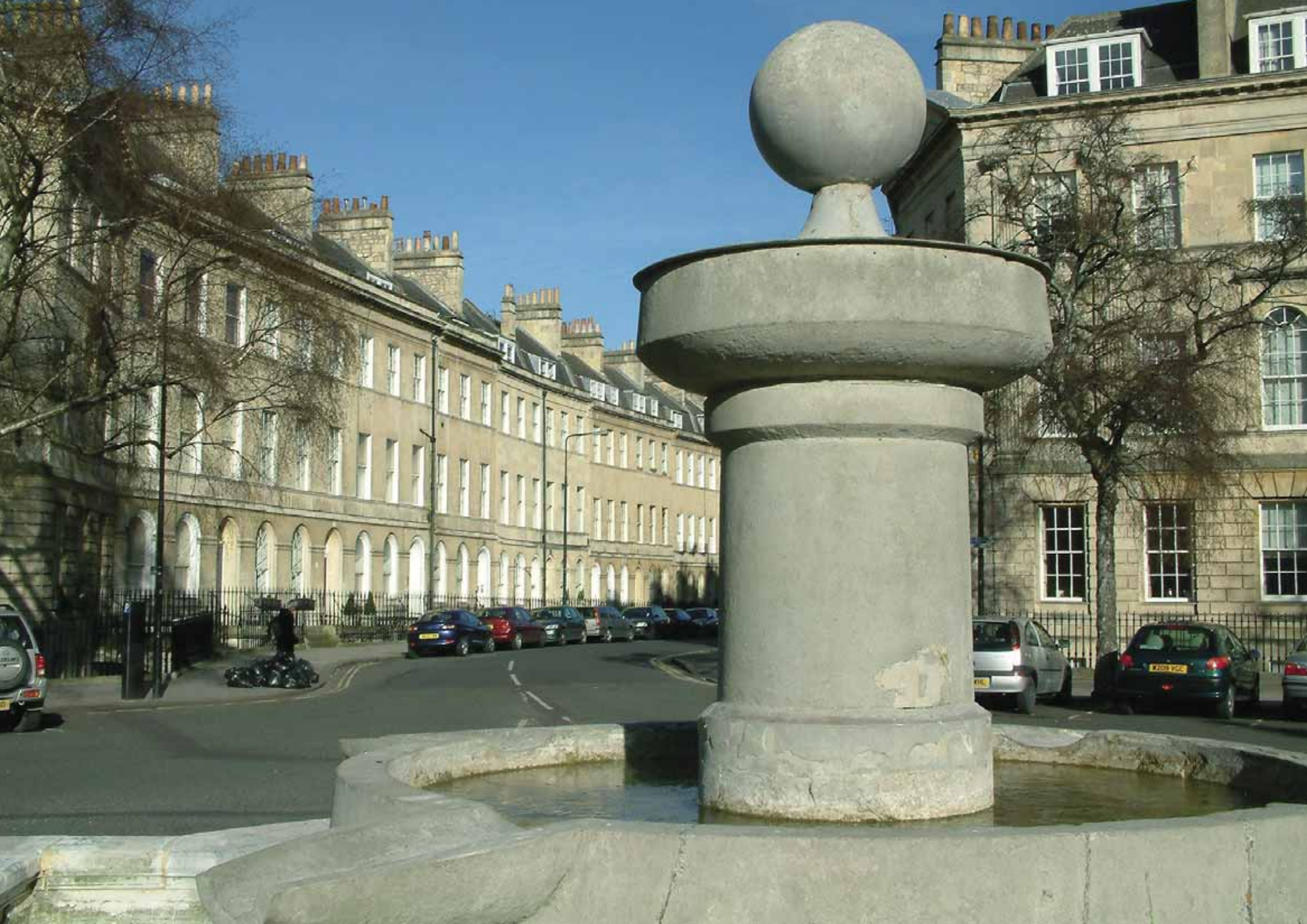
PHOTOGRAPH: © ENGLISH HERITAGE

ENVIRONMENT HAS AN IMPORTANT ROLE IN CONTRIBUTING TO THESE INITIATIVES. WORK DONE NATIONALLY BY ENGLISH HERITAGE ON THE IMPACT OF REGENERATION IN HISTORIC AREAS AS PART OF THE CONSERVATION AREA PARTNERSHIP SCHEME WAS PUBLISHED AS THE HERITAGE DIVIDEND IN 2002⁶. IT DEMONSTRATED THAT FOR EVERY £100 OF ENGLISH HERITAGE INVESTMENT, A FURTHER £460 OF PRIVATE AND PUBLIC FUNDING WAS LEVERED IN. IT IS REASONABLE TO ASSUME SIMILAR LEVELS OF LEVERAGE IN CURRENT GRANT SCHEMES. IN ADDITION, USING KEY HISTORIC FEATURES AS THE FOCUS OF A REGENERATION PROJECT HELPS TO STAMP A STRONG IDENTITY ON THE AREA AND CAN ADD VALUE. IT IS THEREFORE VITAL TO ENSURE THAT DEVELOPMENT PROGRAMMES RESPOND POSITIVELY AND SENSITIVELY TO THE WIDER HISTORIC ENVIRONMENT.

- 2.32 SENSITIVE RE-USE OF THE URBAN HISTORIC ENVIRONMENT CAN HELP TO MEET THE TARGET FOR BROWNFIELD DEVELOPMENT. THERE IS GROWING EVIDENCE, HOWEVER, THAT IT CAN

CONTRIBUTE SIGNIFICANTLY TO THE RENAISSANCE OF OUR TOWNS AND CITIES.

- 2.33 THE VALUE OF REGENERATED HISTORIC ENVIRONMENTS TO OUR TOWNS AND CITIES WAS DEMONSTRATED IN A RICS STUDY OF OFFICE VALUES IN LISTED BUILDINGS⁷. THE HIGH QUALITY OF THE HISTORIC ENVIRONMENT IN SUCH PLACES AS BATH AND SOUTH DEVON HAS UNDOUBTEDLY CONTRIBUTED TO HIGH COMMERCIAL AND RESIDENTIAL VALUES. THE APPEAL OF THE HISTORIC ENVIRONMENT CAN HELP TO STIMULATE COMMERCIAL INVESTMENT SUCH AS THE LARGE-SCALE DEVELOPMENT AROUND BRISTOL HARBOURSIDE AND THE REDEVELOPMENT OF GLOUCESTER DOCKS. THE RECENT REDEVELOPMENT OF SWINDON'S GREAT WESTERN HISTORIC AREA TO PROVIDE A MIXED DEVELOPMENT COMPRISING MUSEUMS, RETAILING AND OFFICE SPACE PROVIDES ANOTHER EXAMPLE OF THE HISTORIC ENVIRONMENT PROVIDING A SPRINGBOARD TO ECONOMIC REGENERATION.



3

THE NEED FOR THIS STRATEGY

LEFT
LAURA PLACE, BATH

THE CITY OF BATH HAS BEEN A WORLD HERITAGE SITE SINCE 1987, RECOGNISED AS A PLACE OF OUTSTANDING UNIVERSAL SIGNIFICANCE FOR ITS ARCHITECTURE, TOWN PLANNING, LANDSCAPE, ARCHAEOLOGICAL REMAINS AND ITS ROLE AS A SETTING FOR SOCIAL HISTORY. A MANAGEMENT PLAN FOR THE PERIOD 2003 – 2009 HAS BEEN PRODUCED AS A PARTNERSHIP DOCUMENT BY BATH AND NORTH EAST SOMERSET COUNCIL AND ENGLISH HERITAGE, UNDER THE GUIDANCE OF A STEERING GROUP WHICH INCLUDES REPRESENTATIVES FROM VARIOUS SECTORS OF THE CITY. THE AIM OF THE MANAGEMENT PLAN IS TO PROVIDE A FRAMEWORK TO CONSERVE THE CULTURAL HERITAGE ASSETS OF THE WORLD HERITAGE SITE OF BATH.

PHOTOGRAPH: © BATH AND NE SOMERSET COUNCIL

3.1 THE HISTORIC ENVIRONMENT IS ONE OF THE SOUTH WEST'S MOST VALUABLE ASSETS. IT IS REMARKABLE IN ITS RICHNESS, DIVERSITY AND, IN MANY CASES, THE EXTENT OF ITS SURVIVAL. THIS CONCLUSION ALONE IS ENOUGH TO JUSTIFY THE PREPARATION OF A STRATEGY FOR THE REGION'S HISTORIC ENVIRONMENT. ADDED IMPETUS IS PROVIDED BOTH BY THE DIRECTION AND TENOR OF NATIONAL POLICIES RELATING TO THE HISTORIC ENVIRONMENT AND, EQUALLY SIGNIFICANTLY, THE URGENCY OF URBAN AND RURAL REGENERATION INITIATIVES WITHIN THE REGION.

THE NATIONAL POLICY PERSPECTIVE

3.2 THE DEPARTMENT FOR CULTURE MEDIA AND SPORT RECENTLY PUBLISHED 'A FORCE FOR OUR FUTURE' DEFINING THE GOVERNMENT'S POLICY TOWARDS ENGLAND'S HISTORIC ENVIRONMENT⁸. THIS RECOGNISES THE ALL PERVASIVE INFLUENCE AND IMPORTANCE OF THE HISTORIC ENVIRONMENT AND SETS OUT A COMMITMENT TO ENSURING THIS IS REFLECTED AT NATIONAL, REGIONAL AND MORE LOCAL LEVELS.

3.3 IMPORTANTLY, 'A FORCE FOR OUR FUTURE' DESCRIBES THE TANGIBLE AND LESS TANGIBLE INFLUENCE AND IMPORTANCE OF THE HISTORIC ENVIRONMENT:

'THE PAST IS ALL AROUND US. WE LIVE OUR LIVES, WHETHER CONSCIOUSLY OR NOT, AGAINST A RICH BACKDROP FORMED BY HISTORIC BUILDINGS, LANDSCAPES AND OTHER PHYSICAL SURVIVALS OF OUR PAST. BUT THE HISTORIC ENVIRONMENT IS MORE THAN JUST A MATTER OF MATERIAL REMAINS. IT IS CENTRAL TO HOW WE SEE OURSELVES AND TO OUR IDENTITY AS INDIVIDUALS, COMMUNITIES AND AS A NATION.'

3.4 IT ALSO DESCRIBES THE DIFFERENT WAYS WE EXPERIENCE AND VALUE THE HISTORIC ENVIRONMENT. THE GROWING POPULARITY OF HISTORIC PROGRAMMES ON TELEVISION, ALLIED TO THE MEMBERSHIP OF ORGANISATIONS SUCH AS THE NATIONAL TRUST AND VISITS TO ENGLISH HERITAGE PROPERTIES, REFLECT THE CULTURAL IMPORTANCE OF THE PAST. FOR SOME PEOPLE THE HISTORIC ENVIRONMENT IS ABOUT EDUCATION AND KNOWLEDGE, WHILE FOR OTHERS IT PROVIDES RECREATION, EMPLOYMENT, OR A PLACE TO LIVE OR WORK. FOR ALL OF US IT MAKES AN IMPORTANT CONTRIBUTION TO OUR QUALITY OF LIFE.

3.5 THE DOCUMENT ALSO MARKS A CLEARER RECOGNITION OF THE CURRENT AND POTENTIAL CONTRIBUTION OF THE HISTORIC ENVIRONMENT TO ECONOMIC, SOCIAL AND ENVIRONMENTAL REGENERATION. THE INTRODUCTION DESCRIBES THE HISTORIC ENVIRONMENT AS 'A SLEEPING GIANT IN BOTH CULTURAL AND ECONOMIC TERMS'. THE CHALLENGE IS TO FIND WAYS OF REALISING THIS POTENTIAL, BRINGING REAL BENEFITS AT NATIONAL, REGIONAL AND MORE LOCAL SCALES.

3.6 THE DOCUMENT ALSO SIGNALS A BROADENING OF SUPPORT FOR THE HISTORIC ENVIRONMENT. THE HISTORIC ENVIRONMENT IS NOW A GOVERNMENT-WIDE RESPONSIBILITY.

THE IMPORTANCE OF INTEGRATING POLICY AT THE REGIONAL LEVEL

3.7 THE REGIONAL DIMENSION HAS BECOME INCREASINGLY IMPORTANT OVER THE PAST FIVE YEARS. NEW REGIONAL ORGANISATIONS HAVE BEEN ESTABLISHED AND FORMAL AND INFORMAL PARTNERSHIPS CREATED. AGENCIES SUCH AS ENGLISH HERITAGE HAVE BEEN RESTRUCTURED TO INCLUDE A REGIONAL PERSPECTIVE.



BATS HEAD, DORSET

THE DORSET AND EAST DEVON COAST WAS INSCRIBED AS A WORLD HERITAGE SITE IN 2001. ITS ROCK FORMATIONS DOCUMENT APPROXIMATELY 185 MILLION YEARS OF EARTH HISTORY. IN ORDER TO INFORM THE FUTURE MANAGEMENT OF THE WORLD HERITAGE SITE, ENGLISH HERITAGE IS FUNDING A RAPID SURVEY TO EXAMINE THE SURVIVING ARCHAEOLOGICAL RESOURCE WITHIN THE COASTAL AND MARINE ZONE.

PHOTOGRAPH: © DORSET COUNTY COUNCIL

- 3.8 ONE OUTCOME OF THIS REGIONALISATION IS THE DEVELOPMENT OF A SERIES OF STRATEGIES AND POLICY FRAMEWORKS TAILORED TO THE NEEDS AND POTENTIAL OF THE SOUTH WEST. THESE INCLUDE REGIONAL PLANNING GUIDANCE (RPG), THE SOUTH WEST REGIONAL ENVIRONMENT STRATEGY, THE SOUTH WEST REGIONAL SUSTAINABLE DEVELOPMENT FRAMEWORK, A SUSTAINABLE CONSTRUCTION CHARTER AND THIS STRATEGY⁹.
- 3.9 AS PART OF THE CHANGES TO THE PLANNING SYSTEM THE EXISTING REGIONAL PLANNING GUIDANCE (RPG) WILL BE REPLACED BY NEW REGIONAL SPATIAL STRATEGIES (RSS) AND WILL CONTAIN MORE DETAILED PROPOSALS. THE RSS WILL PROVIDE A BROAD STRATEGY FOR FUTURE DEVELOPMENT IN THE REGION UP TO 2026 AND INFORM THE PREPARATION OF FUTURE STATUTORY DEVELOPMENT PLANS, PREPARED BY LOCAL AUTHORITIES.
- 3.10 THE RSS WILL BE THE PRIMARY WAY IN WHICH THE OVERALL OBJECTIVES AND PRIORITIES OF THE INTEGRATED REGIONAL STRATEGY WILL BE DELIVERED AND THE HISTORIC ENVIRONMENT STRATEGY FORMS PART OF THIS PROCESS WITHIN THE REGION.
- 3.11 NONE OF THESE STRATEGIES STAND IN ISOLATION. THERE IS INCREASING RECOGNITION OF THE INTERDEPENDENCE OF SECTORS THAT WERE ONCE SEEN AS INDEPENDENT OR SEPARATE. THIS STRATEGY REFLECTS THIS CHANGE. IT AIMS TO ACHIEVE CHANGE IN ITS OWN RIGHT BUT, EQUALLY IMPORTANTLY, IT AIMS TO INFORM OTHER STRATEGIES, PROGRAMMES AND PLANS FOR THE SOUTH WEST, AT REGIONAL, STRATEGIC AND LOCAL LEVELS. IT AIMS TO ENSURE THAT ALL LEVELS OF GOVERNMENT ACROSS THE REGION RECOGNISE THE IMPORTANCE OF THE HISTORIC ENVIRONMENT AND THAT THEY WORK TOGETHER TO REALISE ITS UNTAPPED POTENTIAL.

3.12 THE URGENCY OF SUCH INTEGRATION IS HEIGHTENED BY THE DRIVE FOR ECONOMIC AND SOCIAL REGENERATION ACROSS THE REGION AND A RECOGNITION OF THE POTENTIAL OF THE HISTORIC ENVIRONMENT IN CONTRIBUTING TO URBAN AND RURAL RENAISSANCE.

3.13 THE SOUTH WEST OF ENGLAND REGIONAL DEVELOPMENT AGENCY (RDA), WORKING WITH MANY PARTNERS INCLUDING ENGLISH HERITAGE, IS IN THE VANGUARD OF THIS INITIATIVE. IT HAS PLACED THE REGION'S ENVIRONMENT AT THE HEART OF ITS SOUTH WEST STRATEGY FOR ECONOMIC DEVELOPMENT¹⁰.

3.14 THE STRATEGY EMPHASISES THAT THE SOUTH WEST IS MARKED BY ITS SOCIAL, CULTURAL AND ECONOMIC DIVERSITY AND RICHNESS, AND ITS HIGH QUALITY NATURAL AND BUILT ENVIRONMENT. IT IS A REGION THAT IS GROWING IN ECONOMIC AND SOCIAL TERMS, BUT ONE WITH SOME SIGNIFICANT AND DEEP SEATED PROBLEMS. THE STRATEGY AIMS TO HARNESS GROWTH AND ECONOMIC SUCCESS IN ORDER TO ADDRESS THESE PROBLEMS WITHOUT DAMAGING THE ENVIRONMENT UPON WHICH IT DEPENDS.

...UNBRIDLED GROWTH, WIDENING OF ECONOMIC AND SOCIAL DISPARITIES, AND ENVIRONMENTAL DEGRADATION COULD JEOPARDISE THE FUTURE OF THE SOUTH WEST.

3.15 THE STRATEGY'S VISION REFLECTS THIS EMPHASIS:

...A REGION WHERE PEOPLE AND PLACE COMBINE AS THE SPRINGBOARD TO SUCCESS.

3.16 IN ADDITION TO THE REGIONAL ECONOMIC STRATEGY, THE RDA IS PROMOTING A RANGE OF TARGETED INITIATIVES THAT ARE DESIGNED TO REALISE THE REGION'S ECONOMIC POTENTIAL AND DELIVER SIGNIFICANT SOCIAL BENEFITS. WITH MANY OF

THESE INITIATIVES FOCUSED WITHIN THE LARGER URBAN AREAS, THERE IS A GROWING BODY OF GOOD PRACTICE TO DRAW UPON. THIS RELATES TO THE REUSE OF HISTORIC BUILDINGS, THE MANAGEMENT OF HISTORIC TOWNSCAPES, NEW DEVELOPMENT AND ITS RELATIONSHIP WITH HISTORIC BUILDINGS. MUCH DEPENDS ON THE INTEGRATION OF APPROPRIATE POLICIES INTO DEVELOPMENT PLANS AND DEVELOPMENT BRIEFS, BUT THERE IS ALSO A VERY IMPORTANT ROLE FOR INFORMED DEVELOPERS AND DESIGN TEAMS.

3.17 OTHER INITIATIVES TARGET THE REGENERATION OF SMALLER SETTLEMENTS AND RURAL AREAS. THE REGIONAL DEVELOPMENT AGENCY'S MARKET AND COASTAL TOWNS INITIATIVE IS AIMED AT THE REGENERATION OF SMALL TOWNS SUCH AS CAMBORNE, REDRUTH, BRIDPORT, CREWKERNE AND CHARD. ITS RURAL RENAISSANCE INITIATIVE AIMS TO HELP RURAL COMMUNITIES RESPOND TO AND INFLUENCE ECONOMIC CHANGE BY SUPPORTING THE DEVELOPMENT AND IMPLEMENTATION OF SUSTAINABLE PROJECTS THAT GENERATE EMPLOYMENT, CREATE PROSPERITY, IMPROVE ACCESS TO SERVICES AND VALUE THE ENVIRONMENT AS AN ECONOMIC ASSET. THE CIVIC PRIDE INITIATIVE SEEKS TO REVERSE THE DECLINING QUALITY OF THE PUBLIC REALM IN OUR CITIES, TOWNS AND NEIGHBOURHOODS, CREATING HIGH QUALITY ENVIRONMENTS THAT ARE ATTRACTIVE TO RESIDENTS, WORKERS AND VISITORS.

3.18 THE REGIONAL PLANNING GUIDANCE (RPG) FOR THE SOUTH WEST PROVIDES THE FRAMEWORK WITHIN WHICH STRATEGIC AND LOCAL PLANNING POLICIES WILL BE FORMULATED AND IMPLEMENTED¹¹. LATTERLY THE DEVELOPMENT OF THE REGIONAL SPATIAL STRATEGY WILL REPLACE RPG. THE RPG DEFINES DIFFERENT DEVELOPMENT STRATEGIES FOR FOUR SUB-REGIONS:

- THE NORTHERN SUB-REGION (COMPRISING THE FORMER COUNTY OF AVON, GLOUCESTERSHIRE AND THE NORTHERN PART OF WILTSHIRE) IS SEEN AS A FOCUS FOR CONTINUED ECONOMIC GROWTH, WITH DEVELOPMENT CONCENTRATED IN EXISTING URBAN AREAS;
- THE SOUTH EAST SUB-REGION (COMPRISING DORSET AND SOUTHERN WILTSHIRE) IS ALSO SEEN AS A CENTRE FOR FURTHER GROWTH, BUT ONE WHERE ENVIRONMENTAL CONSTRAINTS MEAN DEVELOPMENT SHOULD BE CONCENTRATED ON BROWNFIELD SITES;
- THE CENTRAL SUB-REGION (COMPRISING EAST DEVON AND SOMERSET) IS CONSIDERED TOO RELIANT ON AGRICULTURE AND TOURISM AND HERE POLICIES SHOULD ENCOURAGE ECONOMIC DIVERSIFICATION FOCUSED ON SMALLER SETTLEMENTS AND MARKET TOWNS;
- THE WESTERN SUB-REGION (COMPRISING WEST DEVON AND CORNWALL) HAS A NEED FOR ECONOMIC DEVELOPMENT AND SIGNIFICANT INCREASES IN PROSPERITY FOLLOWING THE SEVERE DECLINE OF KEY ECONOMIC SECTORS.

3.19 THE RPG ALSO REFLECTS THE RURAL NATURE OF MUCH OF THE REGION AND THE NEED TO TACKLE POCKETS OF DEPRIVATION WHICH TEND TO BE COMPOUNDED BY A DEPENDENCY ON AGRICULTURE, POOR ACCESS TO JOBS AND SERVICES AND A LOW WAGE ECONOMY. WHAT WILL THIS MEAN IN PRACTICE? BROWNFIELD SITES ARE UNLIKELY TO BE ABLE TO ACCOMMODATE THE LEVEL OF DEVELOPMENT ENVISAGED ACROSS THE REGION. THERE IS LIKELY TO BE CONTINUING PRESSURE FOR EXPANSION ON TO GREENFIELD SITES ON THE EDGE OF OUR LARGER SETTLEMENTS. RPG RECOMMENDS THAT A SERIES OF URBAN EXTENSION STUDIES ARE CARRIED OUT AROUND KEY TOWNS



GLOUCESTER DOCKS, GLOUCESTERSHIRE

GLOUCESTER'S DOCKS HAVE BEEN A KEY ENGINE IN THE AREA'S ECONOMY, BUT BY THE 1980S MOST OF THE FINE BRICK WAREHOUSES WERE VACANT OR IN MARGINAL USE. ALTHOUGH POSITIVE ACTION BY GLOUCESTER CITY COUNCIL AND BRITISH WATERWAYS HAS RESULTED IN THE SUCCESSFUL CONVERSION OF SOME OF THESE BUILDINGS, OTHER PARTS OF THE CITY HAVE CONTINUED TO DECLINE. THE GLOUCESTER HERITAGE URBAN REGENERATION COMPANY (ESTABLISHMENT CONFIRMED BY MINISTERS IN MARCH 2004) AIMS TO REVERSE THIS IN A MANNER THAT PRESERVES AND EXPLOITS THE HISTORIC CHARACTER OF THE AREA. AN INITIAL CHARACTERISATION STUDY UNDERTAKEN BY ALAN BAXTER ASSOCIATES ON BEHALF OF ENGLISH HERITAGE AND THE SOUTH WEST REGIONAL DEVELOPMENT AGENCY IS INFORMING THIS PROCESS.

PHOTOGRAPH: ©GLOUCESTERSHIRE COUNTY COUNCIL

AND CITIES ACROSS THE REGION. RECOGNISING THAT MANY OF THESE 'URBAN FRINGE' AREAS ARE OF CONSIDERABLE HISTORIC IMPORTANCE, IT IS VITAL THAT THESE URBAN EXTENSION STUDIES PAY CAREFUL ATTENTION TO THE HISTORIC DIMENSION OF THE ENVIRONMENT IN THESE AREAS. THERE IS ALSO LIKELY TO BE CONTINUED PRESSURE FOR DEVELOPMENT AROUND SMALLER TOWNS AND VILLAGES. AGAIN, IT IS IMPORTANT THAT THE HISTORIC VALUE OF SUCH AREAS IS CAREFULLY ASSESSED. REDUNDANT HISTORIC BUILDINGS WILL CONTINUE TO BE REFURBISHED AND RE-USED, WHILST REGENERATION INITIATIVES WILL FOCUS ON THE ENVIRONMENTAL, SOCIAL AND ECONOMIC ENHANCEMENT OF HISTORIC MARKET AND COASTAL TOWNS, PARTICULARLY WHERE FORMER ECONOMIC ENGINES HAVE DECLINED.

3.20 THE ENGLAND RURAL DEVELOPMENT PROGRAMME (ERDP) ALSO SETS OUT THE FOUNDATIONS FOR A MORE INTEGRATED AND SENSITIVE APPROACH TO RURAL DEVELOPMENT AND LAND MANAGEMENT¹². ACKNOWLEDGING THE ECONOMIC AND CULTURAL IMPORTANCE OF THE HISTORIC ENVIRONMENT, AND THE SERIOUSNESS OF THE CRISIS AFFECTING AGRICULTURE ACROSS THE REGION, THE PROGRAMME ADVOCATES A MOVE AWAY FROM POTENTIALLY DAMAGING INTENSIVE AGRICULTURAL PRACTICES IN FAVOUR OF MORE SENSITIVE APPROACHES THAT HELP TO CONSERVE AND MANAGE THE SOUTH WEST'S ENVIRONMENTAL ASSETS. THIS IS TO BE WELCOMED SINCE, BY PLACING AN EMPHASIS ON MAXIMISING AGRICULTURAL PRODUCTION, PAST SUPPORT SCHEMES CONTRIBUTED TO THE LOSS OF HISTORIC FEATURES AND THE EROSION OF THE HISTORIC LANDSCAPES. PRACTICES SUCH AS PLOUGHING OF OPEN DOWNLAND, THE AMALGAMATION OF FIELDS, DECLINE IN FIELD BOUNDARY MANAGEMENT, LOSS OF TRADITIONAL ORCHARDS, DRAINAGE AND THE REDUNDANCY OF TRADITIONAL FARM BUILDINGS HAVE ALL CONTRIBUTED TO THIS PATTERN

OF CHANGE. WITHOUT POSITIVE INTERVENTION THE CURRENT CRISIS IN AGRICULTURE COULD EASILY RESULT IN THE ACCELERATION OF THESE LOSSES.

3.21 THE ERDP IDENTIFIED THE 'CLEAR NEED FOR SUSTAINABLE RURAL DEVELOPMENT INITIATIVES AND THESE MUST BE PURSUED IN A MANNER THAT RECOGNISES FULLY THE NEED FOR CONSERVATION AND ENHANCEMENT OF THE REGION'S ENVIRONMENTAL RESOURCES AND ADDRESSES THE EFFECTS OF PERIPHERALITY'. THE IMPORTANCE OF THIS MORE INTEGRATED VIEW OF RURAL DEVELOPMENT IS REFLECTED IN THE REGIONAL 'ASPIRATION STATEMENT':

'TO ENABLE THE SOUTH WEST'S RURAL COMMUNITIES TO RETAIN AND STRENGTHEN THEIR CULTURAL DISTINCTIVENESS, ECONOMIC VIABILITY AND QUALITY OF LIFE THROUGH INTEGRATED RURAL DEVELOPMENT WHICH CONSERVES THE SPECIAL CHARACTER AND DIVERSITY OF THE REGION'S ENVIRONMENTAL ASSETS.'

3.22 THE DOCUMENT SPELLS OUT THE IMPLICATIONS OF A SUSTAINABLE APPROACH WHICH INCLUDES SENSITIVE MANAGEMENT OF DESIGNATED AND UNDESIGNATED SITES, A MOVE AWAY FROM INTENSIVE FARMING PRACTICES AND TOWARDS SENSITIVE MANAGEMENT, ENHANCEMENT AND INTERPRETATION OF LANDSCAPE AND HISTORIC FEATURES, AND MORE EFFECTIVE AND MEANINGFUL INVOLVEMENT OF LOCAL COMMUNITIES.

THE CHALLENGE

3.23 THESE INITIATIVES AND POLICIES ARE TO BE SUPPORTED SINCE THEY SHOULD HELP SUSTAIN AND DIVERSIFY THE ECONOMY OF THE REGION. HOWEVER, ALL THOSE WITH AN INVOLVEMENT

IN PLANNING AND MANAGING THE HISTORIC ENVIRONMENT HAVE THE OPPORTUNITY, INDEED THE DUTY, TO ENSURE THAT THESE AMBITIOUS AND IMPORTANT PROJECTS REFLECT THE SPECIAL QUALITIES AND OPPORTUNITIES PRESENTED BY THE SOUTH WEST'S HISTORIC ENVIRONMENT. PROPER INTEGRATION OF THE HISTORIC ENVIRONMENT INTO DEVELOPMENT AND REGENERATION INITIATIVES OFFERS THE OPPORTUNITY TO ENSURE THAT ITS POTENTIAL IS RECOGNISED AND HARNESSSED. BY ACHIEVING SUCH INTEGRATION, SOCIAL AND ECONOMIC BENEFITS CAN BE SECURED WITHIN A HIGH QUALITY, DISTINCTIVE AND VALUED ENVIRONMENT.

3.24 WITHOUT SUCH INTEGRATION, THERE IS A RISK THAT UNINFORMED OR INSENSITIVE INITIATIVES WILL DAMAGE THE HISTORIC ENVIRONMENT, IN THE PROCESS WEAKENING REGIONAL AND LOCAL DISTINCTIVENESS. OUR TOWNS, VILLAGES AND COUNTRYSIDE, OUR ECONOMY AND OUR SENSE OF REGIONAL AND LOCAL IDENTITY WILL BE THE POORER AS A RESULT.

UNDERSTANDING THE IMPORTANCE OF THE HISTORIC ENVIRONMENT

3.25 THE ALL-ENCOMPASSING AND IRREPLACEABLE NATURE OF THE HISTORIC ENVIRONMENT, AND THE TENDENCY TO CONCENTRATE ON INDIVIDUAL SITES, MAY GIVE THE IMPRESSION THAT IT IS DIFFICULT OR IMPOSSIBLE TO INTEGRATE IT COMPREHENSIVELY AND POSITIVELY INTO DEVELOPMENT OR REGENERATION INITIATIVES. HOWEVER, BY DEVELOPING AN UNDERSTANDING OF THE HISTORIC ENVIRONMENT, AND ITS SIGNIFICANCE, THERE IS AN OPPORTUNITY TO CONTRIBUTE POSITIVELY TO CHANGE. SUCH UNDERSTANDING ALLOWS US TO IDENTIFY THOSE ELEMENTS THAT NEED TO BE CONSERVED, AND THOSE WHERE CHANGE MIGHT BE POSSIBLE OR DESIRABLE. EQUALLY,

IT CAN PROVIDE IMPORTANT CUES FOR NEW DEVELOPMENT, COMPLEMENTING THE HISTORIC ENVIRONMENT AND, IN TIME, ADDING TO IT.

3.26 THE KEY MESSAGE HERE IS THAT DECISIONS ABOUT CHANGE SHOULD BE INFORMED BY AN UNDERSTANDING OF THE HISTORIC RESOURCE – WHAT IS IMPORTANT AND WHAT IS NOT. CHARACTERISATION PROVIDES ONE WAY OF DEVELOPING AN OVERVIEW OF THE HISTORIC RESOURCE. CHARACTERISATION IS SIMPLY A PROCESS WHICH IS DESIGNED TO FIND OUT WHAT FEATURES, COMPONENTS OR QUALITIES CONTRIBUTE TO ITS CHARACTER AND IMPORTANCE. IN SOME CASES IT MAY BE IMMEDIATELY OBVIOUS WHAT ARE THE KEY CHARACTERISTICS. MORE OFTEN IT IS NECESSARY TO GATHER INFORMATION AND TO USE IT TO IDENTIFY KEY CHARACTERISTICS. SUCH AN UNDERSTANDING CAN BE USED TO INFORM MANAGEMENT AND DEVELOPMENT POLICIES IN ORDER TO ENSURE THAT KEY ELEMENTS ARE CONSERVED AND ENHANCED AND, MORE POSITIVELY, THAT POLICIES ARE ABLE TO EXPLOIT THE OPPORTUNITIES PRESENTED BY THE HISTORIC ENVIRONMENT.

3.27 THE PROCESS OF CHARACTERISATION IS INTENDED TO OVERCOME THE SUBJECTIVITY THAT COMES WITH ASKING WHAT IS IMPORTANT ABOUT AN AREA OR THING WHILE MAKING THE COLLECTION AND ANALYSIS OF INFORMATION MANAGEABLE. CHARACTERISATION CAN TAKE PLACE AT A VARIETY OF DIFFERENT SCALES RANGING FROM AN INDIVIDUAL BUILDING OR SITE, THROUGH CONSERVATION AREAS TO DISTRICTS, COUNTIES OR THE ENTIRE REGION.

3.28 THE PROCESS HAS ALREADY BEGUN. THE CORNWALL AND SCILLY URBAN SURVEY STUDY, FOR EXAMPLE, HAS USED CHARACTERISATION OF THE HISTORIC BUILT ENVIRONMENT TO INFORM A SERIES OF REGENERATION INITIATIVES.

CONSERVATION AREA ASSESSMENTS USE A CHARACTERISATION PROCESS TO INFORM ORGANIC CHANGE WHICH MAINTAINS AND ENHANCES AN AREA OF SPECIAL QUALITY. ABOUT THREE QUARTERS OF THE SOUTH WEST REGION HAS BEEN SUBJECT TO SOME FORM OF HISTORIC LANDSCAPE CHARACTERISATION, PROVIDING A WAY OF REFLECTING THE WIDER HISTORIC ENVIRONMENT IN COUNTRYSIDE MANAGEMENT OR LAND USE PLANNING, FOR EXAMPLE.

3-29 PREPARATION OF THIS STRATEGY HAS INCLUDED THE FIRST STEPS TOWARDS THE HISTORIC CHARACTERISATION OF THE REGION. ENGLISH HERITAGE, WORKING WITH PARTNERS ACROSS THE REGION, HAS JOINTLY DEVELOPED A DRAFT REGIONAL HISTORIC LANDSCAPE CHARACTER MAP (SEE FIGURE 1). THIS REFLECTS THE CLOSE RELATIONSHIP BETWEEN THE LANDSCAPE AND THE HISTORY OF HUMAN SETTLEMENT AND LAND USE, AND THE COMMON INFLUENCE OF PHYSICAL FACTORS SUCH AS GEOLOGY AND LANDFORM. IT ALSO DEMONSTRATES THE EXTENT TO WHICH MUCH OF THE REGION (PARTICULARLY THE WESTERN PENINSULA) RETAINS ITS MEDIEVAL CHARACTER IN TERMS OF LANDSCAPE AND SETTLEMENT PATTERNS. MANY OF THESE AREAS THAT RETAIN THEIR HISTORIC CHARACTER ARE ALSO DESIGNATED AS NATIONAL PARKS OR AREAS OF OUTSTANDING NATURAL BEAUTY. FURTHER RESEARCH IS REQUIRED TO DEMONSTRATE MORE CLEARLY THE LINK BETWEEN HISTORIC LANDSCAPE PATTERNS AND OUR PERCEPTION OF "NATURAL BEAUTY".

3-30 THE DESCRIPTION OF THE SOUTH WEST'S HISTORIC ENVIRONMENT WILL BE REVISITED ONCE THE WHOLE REGION HAS BEEN SUBJECT TO HISTORIC LANDSCAPE CHARACTERISATION. THIS SHOULD ALLOW A MORE FUNDAMENTAL DEFINITION OF HISTORIC CHARACTER AREAS AND KEY FEATURES AND QUALITIES. THIS IN TURN SHOULD HELP ENSURE THAT DECISIONS ABOUT

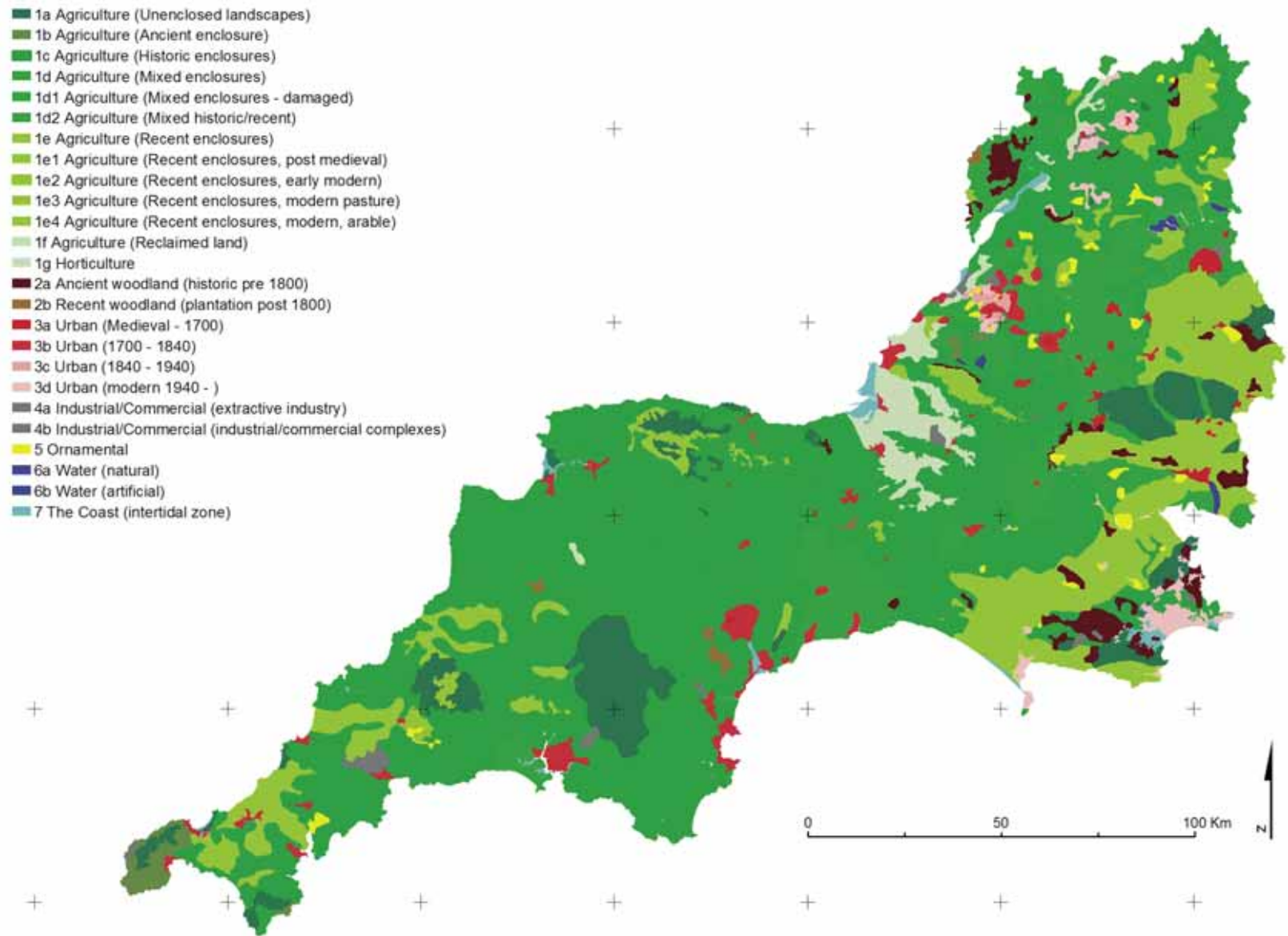
THE FUTURE OF THE HISTORIC ENVIRONMENT ARE MORE FULLY INFORMED.

3-31 CHARACTERISATION OF THE HISTORIC ENVIRONMENT IS NOT INTENDED TO REPLACE DESIGNATION AS A MEANS OF HIGHLIGHTING AND CONSERVING THE MOST IMPORTANT HISTORIC FEATURES. IT DOES, HOWEVER, PROVIDE A WAY OF IDENTIFYING WHAT IS CHARACTERISTIC AND IMPORTANT ABOUT THE WIDER HISTORIC ENVIRONMENT. THIS SHOULD INFORM POLICY DEVELOPMENT AND DECISION MAKING, THEREBY HELPING TO ENSURE THAT THE FEATURES AND QUALITIES THAT CONTRIBUTE TO LOCAL, REGIONAL AND ULTIMATELY NATIONAL DISTINCTIVENESS ARE CONSERVED OR ENHANCED.

FROM CHARACTERISATION TO VISION AND OBJECTIVES

3-32 THE EARLY WORK ON HISTORIC LAND USE CHARACTER, HAS INFORMED THIS STRATEGY'S VISION AND MORE DETAILED OBJECTIVES. THESE AIM TO RAISE AWARENESS OF THE ROLE OF THE HISTORIC ENVIRONMENT AND TO REALISE ITS FURTHER POTENTIAL IN TERMS OF THE REGION'S CULTURAL IDENTITY, SENSE OF PLACE, ECONOMIC VITALITY AND QUALITY OF LIFE.

MANY WILL HAVE NOTICED THAT THE PROTECTED LANDSCAPES OUR SOCIETY VALUES MOST BROADLY COINCIDE WITH AREAS OF ANCIENT LAND USE, WHETHER SPECIES-RICH VALLEY WOODLAND, ROUGH SUMMER GRAZING OR PREHISTORIC OR MEDIEVAL ENCLOSURE. THE CORRELATION, AS ILLUSTRATED HERE IN THE COMPLEX BORDERLAND BETWEEN CORNWALL AND DEVON, STRONGLY SUGGESTS THAT OUR AESTHETIC RESPONSES ARE CULTURALLY ATTUNED TO THE PATTERNS AND COMPONENTS OF OUR COUNTRYSIDE'S HEARTLAND. THE POSITIVE MANAGEMENT AND CONSERVATION OF THESE AREAS BY LOCAL COMMUNITIES IN PARTNERSHIP WITH GOVERNMENT DEPARTMENTS, AGENCIES, THE NATIONAL PARKS, AONBs AND LOCAL AUTHORITY OFFICERS COULD, THEREFORE, BE MORE ACTIVELY INFORMED BY THE HISTORIC ENVIRONMENT SECTOR.



© CROWN COPYRIGHT. ALL RIGHTS RESERVED. CORNWALL COUNTY COUNCIL

FIGURE 1: DRAFT REGIONAL HLC MAP



A VISION FOR THE HISTORIC ENVIRONMENT IN THE SOUTH WEST

4

LEFT
TOTNES, DEVON

DOMINATED BY THE MEDIEVAL CASTLE WHICH STANDS ABOVE THE PRINCIPAL STREET, TOTNES IS ONE OF THE BEST PRESERVED SMALL MARKET TOWNS IN ENGLAND. ITS WEALTH WAS DERIVED FROM THE WOOL AND TIN INDUSTRIES WITH THE SETTLEMENT LOCATED ON THE LOWEST CROSSING POINT OF THE RIVER DART. RECENT RESEARCH HAS SHOWN THAT THE MAIN STREET CONTAINS NO LESS THAN 66 HOUSES DATEABLE TO BEFORE 1700, WHICH MAKES THIS ONE OF THE BEST SURVIVING GROUPS IN THE COUNTRY.

PHOTOGRAPH: © DEVON COUNTY COUNCIL

4.1

THIS STRATEGY PROVIDES THE OPPORTUNITY TO STAND BACK AND TO DEFINE A VISION FOR THE WAY IN WHICH THE HISTORIC ENVIRONMENT IS MANAGED OVER THE COMING YEARS. THIS SECTION SETS OUT AN AMBITIOUS, BUT EXCITING VISION FOR THE SOUTH WEST'S HISTORIC ENVIRONMENT. IT IS FOLLOWED BY A SERIES OF MORE DETAILED OBJECTIVES THAT REFLECT MANY OF THE KEY PRIORITIES AND THEMES BEING PROMOTED BY CENTRAL GOVERNMENT.

VISION FOR THE FUTURE OF THE HISTORIC ENVIRONMENT IN THE SOUTH WEST

- OUR VISION IS OF AN HISTORIC ENVIRONMENT THAT IS WIDELY RECOGNISED AS ONE OF THE SOUTH WEST'S KEY ASSETS AND STRENGTHS AND IS CELEBRATED FOR ITS RICHNESS AND DIVERSITY
- IT IS AN HISTORIC ENVIRONMENT THAT MAKES A POSITIVE CONTRIBUTION TO ECONOMIC, SOCIAL AND ENVIRONMENTAL REGENERATION. IT IS CONSERVED AND ENHANCED BOTH FOR OUR OWN BENEFIT AND THAT OF FUTURE GENERATIONS.
- IT IS A RESOURCE THAT IS APPRECIATED AS A WAY OF UNDERSTANDING OUR PAST, PRESENT AND FUTURE. THE ACTIONS OF TODAY ARE RECOGNISED AS CONTRIBUTING TO THE HISTORIC ENVIRONMENT OF TOMORROW.

OBJECTIVES FOR THE FUTURE OF THE HISTORIC ENVIRONMENT IN THE SOUTH WEST

- OUR KNOWLEDGE OF THE HISTORIC ENVIRONMENT OF THE SOUTH WEST CONTINUES TO GROW AND

IS USED TO INFORM POSITIVE CONSERVATION AND ENHANCEMENT OF THE HISTORIC ENVIRONMENT. RESEARCH IS FOCUSED IN THOSE AREAS WHERE WE KNOW LEAST OR WHERE THE PRESSURES FOR CHANGE ARE GREATEST.

- THE HISTORIC ENVIRONMENT CONTRIBUTES MORE FULLY TO A SUSTAINABLE FUTURE, BUILDING LINKS BETWEEN PLACE, TIME AND CHARACTER AND CONTRIBUTING TO DISTINCTIVENESS AT LOCAL, REGIONAL AND NATIONAL LEVELS.
- THE HISTORIC ENVIRONMENT IS WIDELY RECOGNISED AS A MAJOR CONTRIBUTOR TO QUALITY OF LIFE ACROSS THE REGION, CREATING PLACES TO WORK, LIVE AND RELAX. THIS IS REFLECTED IN REGENERATION, TOURISM AND RECREATION STRATEGIES.
- THE HISTORIC ENVIRONMENT BECOMES A MORE ACCESSIBLE PART OF OUR EVERYDAY LIVES. GOOD DESIGN, PLANNING AND MANAGEMENT IMPROVES PHYSICAL ACCESS. BETTER INFORMATION, INCLUDING THE USE OF TECHNOLOGY, AND EFFECTIVE AND MEANINGFUL COMMUNITY INVOLVEMENT IMPROVES INTELLECTUAL ACCESS.
- THE HISTORIC ENVIRONMENT CONTRIBUTES TO SOCIAL INCLUSION. SOCIAL, CULTURAL AND ECONOMIC BARRIERS THAT DISCOURAGE INVOLVEMENT, UNDERSTANDING AND ENJOYMENT OF THE HISTORIC ENVIRONMENT ARE REMOVED. THERE IS WIDER APPRECIATION OF THE ROLE AND IMPORTANCE OF THE HISTORIC ENVIRONMENT IN OUR EVERYDAY LIVES.



- THERE IS GREATER UNDERSTANDING AND AWARENESS OF THE HISTORIC ENVIRONMENT. IT IS REFLECTED IN THE PROCESS OF LIFELONG LEARNING AND IS REFLECTED IN SCHOOLS, UNIVERSITY RESEARCH, LOCAL GROUPS AND SOCIETIES, THE VOLUNTARY SECTOR AND MORE WIDELY THROUGH THE MEDIA. HERITAGE PROFESSIONALS PLAY A KEY ROLE IN PROMOTING AND CO-ORDINATING GREATER UNDERSTANDING AND AWARENESS.
- THE HISTORIC ENVIRONMENT BECOMES A POSITIVE INFLUENCE ON CHANGE ACROSS THE REGION. IT MAKES A POSITIVE CONTRIBUTION TO THE REGENERATION OF URBAN AND FORMER INDUSTRIAL AREAS. IT UNDERPINS INITIATIVES TO REGENERATE THE RURAL ECONOMY. BETTER UNDERSTANDING OF THE WIDER HISTORIC ENVIRONMENT INFORMS MORE EFFECTIVE PLANNING AND THE MANAGEMENT OF CHANGE.
- CENTRAL TO THIS VISION IS THE SHARING OF BEST PRACTICE WITHIN THE HERITAGE SECTOR. EQUALLY IMPORTANT WILL BE THE CREATION OF EFFECTIVE PARTNERSHIPS WITH OTHER AGENCIES AND ORGANISATIONS OUTSIDE THE HERITAGE SECTOR WHICH FURTHER RAISE THE APPRECIATION OF THE HISTORIC ENVIRONMENT AT LOCAL, STRATEGIC AND REGIONAL LEVELS.

WHEAL COATES, ST AGNES, CORNWALL

THE EVOCATIVE MINING LANDSCAPE AT WHEAL COATES FORMS PART OF THE DRAFT NOMINATION BID FOR THE CORNWALL AND WEST DEVON WORLD HERITAGE SITE. THE BID AND SUPPORTING MANAGEMENT PLAN IS TO BE COMPLETED IN SPRING 2004 AND SENT OUT FOR PUBLIC CONSULTATION DURING THE SUMMER. IT WILL THEN BE AGREED WITH THE DEPARTMENT FOR CULTURE, MEDIA AND SPORT IN SEPTEMBER BEFORE BEING SUBMITTED TO THE UNITED NATIONS EDUCATIONAL, SCIENTIFIC AND CULTURAL ORGANISATION'S WORLD HERITAGE COMMITTEE (UNESCO) IN 2005.

PHOTOGRAPH: © CORNWALL COUNTY COUNCIL



A STRATEGY FOR THE HISTORIC ENVIRONMENT IN THE SOUTH WEST

5

LEFT

NATIONAL MONUMENTS RECORD CENTRE, SWINDON

FORMERLY PART OF THE GREAT WESTERN RAILWAY WORKS, THE NATIONAL MONUMENTS RECORD IS ENGLISH HERITAGE'S PUBLIC ARCHIVE, HOLDING OVER SIX MILLION PHOTOGRAPHS, 300,000 DRAWINGS AND OVER ONE MILLION DATABASE RECORDS. AS WELL AS CONVENTIONAL VISITOR AND RESEARCH SERVICES, THE NATIONAL MONUMENTS RECORD ALSO RUNS EDUCATIONAL AND OUTREACH PROGRAMMES.

PHOTOGRAPH: © ENGLISH HERITAGE



TREBAH GARDENS, CORNWALL

REFLECTING THE LUSH SEMI-TROPICAL PLANTING IN THE SURROUNDING GARDENS, THE NEW VISITOR CENTRE AT TREBAH DRAWS ITS INSPIRATION FROM PLANTATION ARCHITECTURE. IT WAS RECOGNISED AS BEST NEW BUILDING IN THE CORNISH BUILDINGS GROUP AWARDS 2002 AND WON THE RIBA WESSEX REGION AWARD 2003. ARCHAEOLOGICAL EVIDENCE WAS USED TO RECREATE ALICE'S SEAT, A GARDEN SHELTER BUILT IN THE TRADITIONAL MATERIALS OF COB AND THATCH. TREBAH IS LISTED GRADE II ON THE ENGLISH HERITAGE REGISTER OF PARKS AND GARDENS OF SPECIAL HISTORIC INTEREST, AND THESE EXAMPLES DEMONSTRATE HOW MODERN AND HISTORIC DESIGN CAN ENHANCE THE OVERALL APPEARANCE OF THE GARDEN.

PHOTOGRAPHS: © CAROE & PARTNERS ARCHITECTS, WELLS, SOMERSET



5.1 UNDERPINNING THE VISION IS A SERIES OF MORE DETAILED RECOMMENDATIONS, WHICH FOCUS ON ISSUES THAT THE HISTORIC ENVIRONMENT SECTOR IN THE REGION MIGHT CHOOSE TO TACKLE OVER THE COMING FIVE YEARS. THESE ARE AMPLIFIED WITH MORE DETAILED ACTIONS THAT SEEK TO IDENTIFY PARTNERS, RESOURCES, GOALS AND DESIRED OUTCOMES. THESE ARE AMBITIOUS AND CHALLENGING TARGETS AND THEY SET THE AGENDA FOR POSITIVE ACTION.

5.2 THESE RECOMMENDATIONS ARE THE FIRST ATTEMPT TO SET A SERIES OF REGIONAL PRIORITIES. THEY HAVE BEEN INFORMED BY NATIONAL POLICY STATEMENTS BUT HAVE A REGIONAL PERSPECTIVE. THE BROAD HEADLINE RECOMMENDATIONS ARE FOLLOWED BY A SERIES OF MORE SPECIFIC ACTIONS. THEY ARE PRESENTED HERE IN ORDER TO PROMOTE WIDER DISCUSSION THROUGHOUT THE SECTOR AS TO THEIR APPROPRIATENESS AND DELIVERABILITY. THE HEF WILL ENGAGE THE HERITAGE SECTOR AND WIDER PARTNERS TO DEBATE AND DEVELOP THE ACTIONS AND TAKE FORWARD DELIVERY OF THE STRATEGY THROUGH WORKSHOPS AND WILL MONITOR PROGRESS THROUGH THE REGIONAL ANNUAL REPORTING ON THE STATE OF THE HISTORIC ENVIRONMENT.

5.3 REGIONAL PRIORITY 1:

CONTINUE TO IMPROVE OUR KNOWLEDGE AND UNDERSTANDING OF THE SOUTH WEST'S HISTORIC ENVIRONMENT AND REFLECT THIS IN INFORMED AND POSITIVE CONSERVATION AND ENHANCEMENT OF THE HISTORIC ENVIRONMENT.

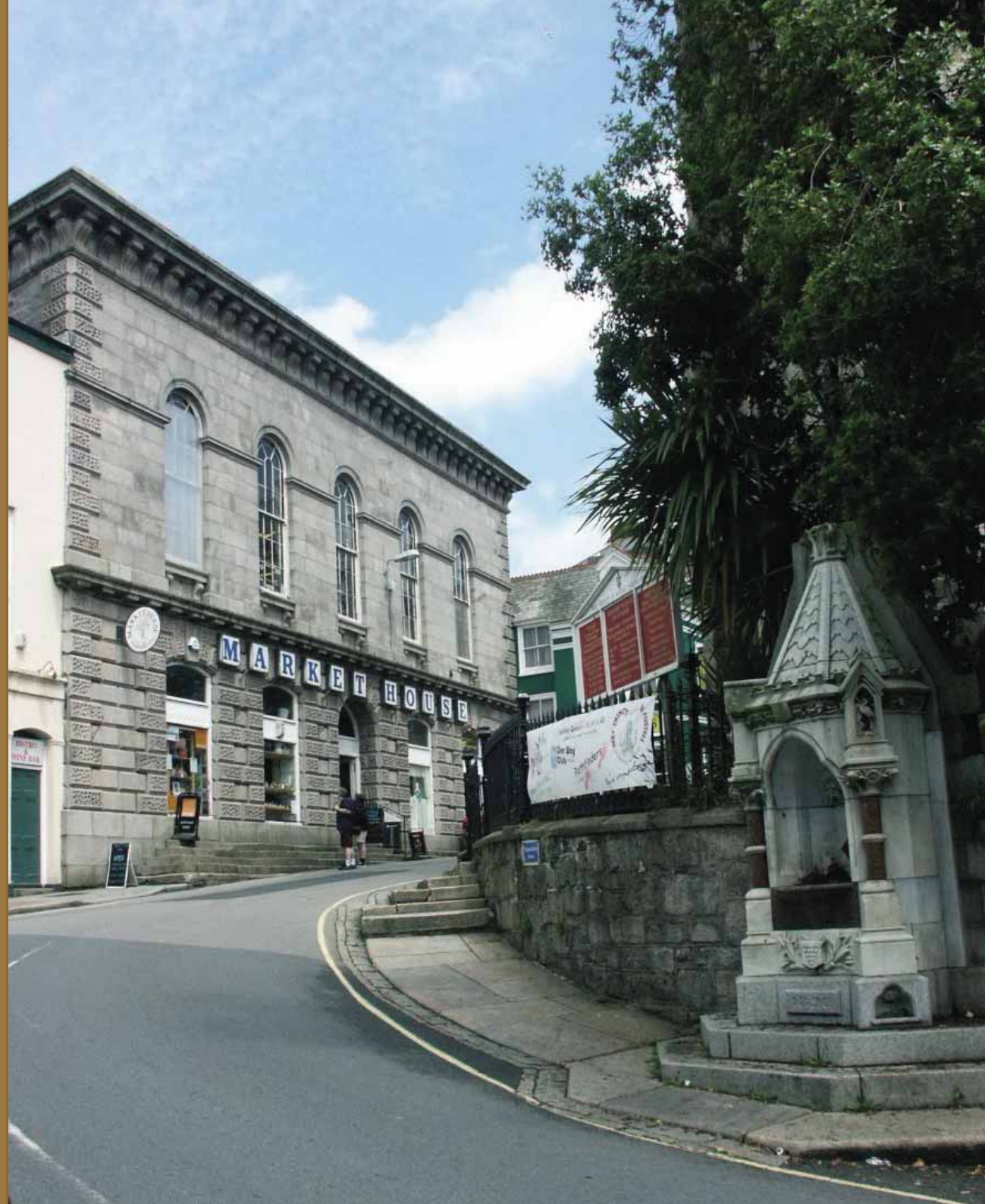
5.4 THE STARTING POINT IN MANAGEMENT OF THE HISTORIC ENVIRONMENT IS THE EXPLICIT RECOGNITION OF THE IRREPLACEABLE AND NON-RENEWABLE NATURE OF THE HISTORIC ENVIRONMENT. WHILE THIS DOES NOT MEAN THAT WE MUST PRESERVE EVERY PART OF THE HISTORIC ENVIRONMENT, IT DOES REQUIRE THAT WE HAVE THE KNOWLEDGE, RESOURCES AND EXPERTISE TO EVALUATE WHAT SHOULD BE CONSERVED. CAREFULLY PRIORITISED RESEARCH, REFLECTING KEY PRESSURES OR GAPS IN OUR KNOWLEDGE, WILL PLAY A KEY ROLE IN IMPROVING OUR UNDERSTANDING OF THE HISTORIC RESOURCE. CHARACTERISATION AND OTHER FORMS OF APPRAISAL SHOULD BE TARGETED AT THOSE AREAS WHERE THE PRESSURES FOR CHANGE ARE GREATEST. CONSERVATION ALSO REQUIRES EFFECTIVE MECHANISMS TO PROTECT WHAT IS IMPORTANT. WE SHOULD RECORD THOSE ELEMENTS OF THE HISTORIC ENVIRONMENT THAT, FOR WHATEVER REASON, CANNOT BE KEPT. RECORDING SUCH ELEMENTS PROVIDES A FUNDAMENTAL SOURCE OF INFORMATION FOR FUTURE DECISIONS AND AN ACCOUNT OF WHAT HAS BEEN LOST. FORMAL DESIGNATION WILL CONTINUE TO PLAY AN IMPORTANT ROLE, BUT THERE WILL BE A GROWING EMPHASIS ON UNDERSTANDING THE CHARACTER AND SIGNIFICANCE OF THE WIDER HISTORIC ENVIRONMENT, AND ON ENSURING THAT THIS IS REFLECTED IN PLANNING AND MANAGEMENT FRAMEWORKS, TOGETHER WITH INITIATIVES SUCH AS THE HISTORIC LANDSCAPE CHARACTER ANALYSIS AT REGIONAL AND LOCAL LEVELS. EXISTING STATUTORY DESIGNATION CONTROLS CAN BE PERCEIVED TO ACT AS A CONSTRAINT TO DEVELOPMENT, WHEREAS THE PROCESS OF CHARACTERISATION CAN PROVIDE A STIMULUS FOR GOOD QUALITY NEW DEVELOPMENT.

CORNWALL AND SCILLY URBAN SURVEY

THE CORNWALL AND SCILLY URBAN SURVEY (CSUS) WAS SET UP TO BE A KEY CONTRIBUTOR TO REGENERATION IN THE REGION. IT IS FUNDED BY ENGLISH HERITAGE, THE OBJECTIVE 1 PARTNERSHIP FOR CORNWALL AND SCILLY (EUROPEAN REGIONAL DEVELOPMENT FUND) AND, IN 2002/03, BY THE SOUTH WEST REGIONAL DEVELOPMENT AGENCY. THE PROJECT IS INVESTIGATING 19 HISTORIC TOWNS AND CREATING FOR EACH THE INFORMATION BASE AND URBAN CHARACTER ASSESSMENT WHICH WILL PROVIDE A FRAMEWORK FOR SUSTAINABLE ACTION WITHIN THESE HISTORIC SETTLEMENTS. CSUS IS A PIONEERING INITIATIVE AIMED DIRECTLY AT CUTTING ACROSS THE BOUNDARY THAT TRADITIONALLY DIVIDES CONSERVATION AND ECONOMIC DEVELOPMENT. NATIONALLY, IT IS THE FIRST SUCH PROJECT CARRYING OUT A CHARACTERISATION-BASED ASSESSMENT OF THE HISTORIC URBAN DEVELOPMENT SPECIFICALLY TO INFORM AND SUPPORT A REGIONAL ECONOMIC REGENERATION PROGRAMME. FUTURE REGENERATION INITIATIVES IN OTHER HISTORIC SETTLEMENTS, BOTH IN CORNWALL AND FURTHER AFIELD, WILL BENEFIT FROM THE NEW APPROACH DEVELOPED BY THE PROJECT.

AT ST AUSTELL, A FINE COLLECTION OF BUILDINGS INCLUDING THE MARKET HOUSE, OLD MANOR, WHITE HART HOTEL AND 'RED BANK', COMBINES WITH THE PATTERN OF NARROW, CURVING STREETS AND THE GREEN 'OASIS' OF THE CHURCHYARD TO CREATE A DISTINCTIVE 'SENSE OF PLACE'. THE CSUS REPORT UNDERLINES THE IMPORTANCE OF PLANNING REGENERATION SO THAT THIS AREA, AND PARTICULARLY THE AIR OF QUALITY AND CHARACTER IT PRESENTS, IS REINFORCED AS THE PERCEIVED 'CENTRE' OF TOWN.

PHOTOGRAPH: © CORNWALL COUNTY COUNCIL



ACTION	PARTNERS – LEAD SHOWN FIRST	POSSIBLE RESOURCES	GOALS & TIMESCALE	OUTCOMES	DRAFT REGIONAL PERFORMANCE INDICATOR
1. INCREASE KNOWLEDGE OF THE HE, INCLUDING KEY AREAS, HISTORIC PERIODS AND THE HISTORIC DIMENSION OF THE WIDER ENVIRONMENT	SWHEF, EH, LPAs, HLF, ALGAO, VS, ES, NT	EH, LPAs, HLF, VS, ES ADDITIONAL RESOURCES REQUIRED TO ACHIEVE FULLER UNDERSTANDING. TARGETING LIKELY TO BE REQUIRED	PROVIDE A MORE COMPREHENSIVE BASIS FOR ASSESSING SIGNIFICANCE OF THE HE AND JUDGING THE EFFECTS (POSITIVE/NEGATIVE) OF CHANGE. ONGOING	IMPROVED ABILITY TO IDENTIFY AND CONSERVE THE MOST IMPORTANT ELEMENTS OF THE HISTORIC ENVIRONMENT	<p>AGREED REGIONAL RESEARCH PRIORITIES</p> <p>NO OF RESEARCH PROJECTS FOCUSED ON REGIONAL RESEARCH PRIORITIES</p> <p>LEVELS OF SUPPORT IN PUBLIC ATTITUDE SURVEYS FOR THE ROLE OF HERITAGE IN EDUCATION, REGENERATION AND SOCIAL INCLUSION</p> <p>LEVEL OF MEDIA INTEREST IN HISTORIC ENVIRONMENT ISSUES THROUGH TELEVISION, RADIO, INTERNET AND PRINTED WORD</p>
2. CREATE IMPROVED SYSTEMS FOR COLLECTING, RECORDING AND SHARING INFORMATION ABOUT THE HE	SWHEF, EH, LPAs, ALGAO, VS	EH, LPAs, GOSW, RA, VS ADDITIONAL RESOURCES REQUIRED TO ACHIEVE FULLER UNDERSTANDING. TARGETING LIKELY TO BE REQUIRED	PROVIDE A MORE COMPREHENSIVE, CONSISTENT AND ACCESSIBLE BASIS FOR ASSESSING SIGNIFICANCE OF THE HE AND JUDGING THE EFFECTS (POSITIVE/NEGATIVE) OF CHANGE. SYSTEMS SHOULD BE IN PLACE BY 2004	IMPROVED ABILITY TO IDENTIFY AND CONSERVE THE MOST IMPORTANT ELEMENTS OF THE HISTORIC ENVIRONMENT	CREATION OF AN INTEGRATED AND ACCESSIBLE HE INFORMATION SYSTEM

NOTE ON ACTION TABLES. HE = HISTORIC ENVIRONMENT. OTHER ACRONYMS USED ARE INCLUDED IN APPENDIX 1





THE ROYAL WILLIAM YARD, PLYMOUTH

ROYAL WILLIAM YARD COVERS AN EIGHTEEN-ACRE PENINSULA IN PLYMOUTH'S STONEHOUSE/MOUNT WISE AREA. DESIGNED BY SIR JOHN RENNIE AND BUILT IN 1826-35 AS A VICTUALLING DEPOT, THIS IS ONE OF THE FINEST GROUPS OF BUILDINGS TO BE CONSTRUCTED FOR THE ROYAL NAVY. LISTED AT GRADE I, THE YARD WENT OUT OF MILITARY USE IN 1992 AND IS NOW OWNED BY THE SOUTH WEST REGIONAL DEVELOPMENT AGENCY. WORKING CLOSELY WITH ENGLISH HERITAGE AND PLYMOUTH CITY COUNCIL, THE REGIONAL DEVELOPMENT AGENCY RECOGNISED THE IMPORTANCE OF THE SITE AND DREW UP A CONSERVATION PLAN TO ENABLE THE YARD TO BE DEVELOPED WHILE RETAINING ITS CHARACTER. THE DEVELOPER, URBAN SPLASH IS CONVERTING TWO BUILDINGS TO CREATE A MIXED-USE SCHEME WITH 133 APARTMENTS AND THREE COMMERCIAL SPACES. ALL THE RESIDENTIAL UNITS WERE PRE-SOLD IN A SINGLE DAY DEMONSTRATING THAT A COMBINATION OF HIGH QUALITY DESIGN IN AN HISTORIC SETTING CAN BE ACHIEVED WITH GOOD COMMERCIAL RETURNS.

PHOTOGRAPH: © SOUTH WEST REGIONAL DEVELOPMENT AGENCY

5.5 REGIONAL PRIORITY 2:

PUT CONSERVATION AT THE HEART OF URBAN RENEWAL AND REGENERATION STRATEGIES, INITIATIVES AND PROPOSALS RIGHT ACROSS THE SOUTH WEST.

5.6 THERE ARE A LARGE NUMBER OF PUBLIC REGENERATION INITIATIVES OCCURRING IN URBAN SETTLEMENTS OF ALL SIZES ACROSS THE REGION. MANY OF THESE INITIATIVES ARE ASSISTED FROM CENTRAL GOVERNMENT AND EUROPEAN UNION FUNDS, BUT THERE ARE SUBSTANTIAL INVESTMENTS FROM LOCAL AUTHORITIES, THE REGIONAL DEVELOPMENT AGENCY AND OTHER AGENCIES TOO. THE PRIVATE SECTOR IS AN ESSENTIAL PLAYER IN DETERMINING THE SUCCESS OF ALL THESE INITIATIVES. IT ALSO PLAYS A KEY ROLE IN MORE PROSPEROUS AREAS WHERE THE SAME LEVEL OF GRANT ASSISTANCE IS NOT AVAILABLE. PROJECTS INCLUDE THE REDEVELOPMENT OF FORMER INDUSTRIAL AREAS AND URBAN EXPANSION TO ACCOMMODATE CONTINUED ECONOMIC GROWTH. MANY ARE BASED IN HISTORIC AREAS BUT THIS IS NOT ALWAYS FULLY REFLECTED IN THE FINAL DEVELOPMENTS. THE HISTORIC ENVIRONMENT SECTOR NEEDS TO INCREASE ITS INFLUENCE IN THEIR PREPARATION AND IMPLEMENTATION OF SUCH PLANS AND REINFORCE ITS IMPORTANCE AS A CORE ASSET. THIS WILL HELP PROTECT IMPORTANT ELEMENTS OF THE HISTORIC ENVIRONMENT, BUT, OF EQUAL IMPORTANCE, WILL CONTRIBUTE TO THE QUALITY, DISTINCTIVENESS AND CHARACTER OF NEW DEVELOPMENT. THE SOUTH WEST HISTORIC ENVIRONMENT FORUM RECOGNISES THAT ITS CORE OBJECTIVE IS TO PRESENT THE HISTORIC ENVIRONMENT AS A KEY OPPORTUNITY FOR REGENERATION INITIATIVES RATHER THAN AS A CONSTRAINT.

ACTION	PARTNERS – LEAD SHOWN FIRST	POSSIBLE RESOURCES	GOALS & TIMESCALE	OUTCOMES	DRAFT REGIONAL PERFORMANCE INDICATOR
1. ENSURE THAT ALL APPROPRIATE LAND-USE AND POLICY DOCUMENTS REFLECT HISTORIC ENVIRONMENT ISSUES	SWHEF, EH, LPAs, GOSW, RDA, RA, VS, ALGAO, RTPi, RIBA	EH, LPAs, GOSW, RA, VS MOST OF THIS IS ONGOING WORK AND WILL NOT REQUIRE SIGNIFICANT ADDITIONAL RESOURCES	ADVOCACY:- RAISE PROFILE OF HE SECTOR TO ENSURE RELEVANT BODIES ARE CONSULTED ON EMERGING DOCUMENTS- ONGOING	IMPORTANCE OF HE IS GIVEN FULL RECOGNITION IN THE REGION	INSTANCES OF HE BEING POSITIVELY INTEGRATED AT REGIONAL, STRATEGIC AND LOCAL POLICY LEVELS
2. SPREAD EXPERIENCE OF HE SUCCESSES IN REGENERATION STRATEGIES	GOSW (OBJ 1&2), LPAs, RDA, EH, ALGAO, HLF, RTPi, RIBA, PS	GOSW, LPAs, RDA, HLF, EH, PS SHOULD REQUIRE ONLY LIMITED RESOURCES	CIRCULATE INFORMATION ON BEST PRACTICE. POSSIBLE SEMINAR/S. ONGOING	INCREASED SUCCESS RATES FOR HE-RELATED REGENERATION INITIATIVES.	NUMBER OF EXAMPLES OF INITIATIVES TO SHARE INFORMATION / HIGHLIGHT BEST PRACTICE WITH NON HE PROFESSIONALS AMOUNT OF PUBLIC INVESTMENT AND MATCH FUNDING IN HISTORIC AREA REGENERATION
3. ALL STATUTORY DEVELOPMENT PLANS TO FULLY REFLECT HE CONCERNS INCLUDING SPG, DEVELOPMENT BRIEFS	LPAs, GOSW, EH	LPAs, GOSW, EH ONGOING, SHOULD NOT INVOLVE SIGNIFICANT ADDITIONAL RESOURCES	ALL PLANS TO CONTAIN STRONG, CLEAR AND CONCISE POLICIES/STATEMENTS ON HE SIGNIFICANCE – ONGOING	IMPROVED QUALITY OF DECISION-MAKING. FEWER CHALLENGES/APPEALS/ CALL-INS, ETC.	
4. COMMUNITIES TO BE MEANINGFULLY INVOLVED IN HE ASPECTS OF REGENERATION	LPAs, GOSW, HLF, VS, PS, ALGAO	LPAs, GOSW, HLF, VS, PS	DEVELOP AND SHARE GOOD PRACTICE GUIDELINES ON COMMUNITY INVOLVEMENT BY 2005	GREATER COMMUNITY INFLUENCE OF LOCAL DECISIONS	NUMBER OF COMMUNITY LEVEL REGENERATION INITIATIVES THAT SUCCESSFULLY COVER HE ISSUES
5. UNDERTAKE HE CHARACTER APPRAISALS OF SIGNIFICANT SETTLEMENTS IDENTIFIED FOR REGENERATION INITIATIVES.	LPAs, EH, RDA, ALGAO, IHBC, HLF	RDA, EH, LPAs, HLF	ENSURE RELEVANT INITIATIVES TAKE FULL ADVANTAGE OF THE OPPORTUNITIES OFFERED BY THE HE FOR REGENERATION	CHARACTER APPRAISALS USED BY ARCHITECTS/ DESIGNERS/ PLANNERS TO INFORM DEVELOPMENT PROPOSALS	NUMBER OF CHARACTER APPRAISALS UNDERTAKEN IN RELATION TO NUMBER OF REGENERATION SCHEMES
6. ENSURE THE HE IS CONSIDERED FULLY IN URBAN EXTENSION STUDIES AROUND PRINCIPAL SETTLEMENTS	GOSW, LPAs, RA, RDA, EH, PS	RDA, LAs, PS THIS IS A REQUIREMENT AND SHOULD NOT REQUIRE ADDITIONAL RESOURCES	ENSURE THE POTENTIAL EFFECTS OF DEVELOPMENT ON THE HISTORIC ENVIRONMENT AROUND PRINCIPAL SETTLEMENTS IS CONSIDERED FULLY	POSITIVE INPUT TO EXPANSION PROPOSALS ALLIED TO CONSERVATION OF MOST IMPORTANT ELEMENTS OF HE IN THESE AREAS	INCLUSION OF HE INTO STUDY BRIEFS APPROPRIATE COVERAGE IN STUDIES AND STUDY RECOMMENDATIONS



UPPER ROW FARM PROJECT, HEMINGTON, SOMERSET

THESE PHOTOGRAPHS SHOW AN EXCAVATION DIRECTED BY JAYNE LAWES OF BATH & CAMERTON ARCHAEOLOGICAL SOCIETY AT UPPER ROW FARM, HEMINGTON, SOMERSET. THE SOCIETY HAVE BEEN RESEARCHING VARIOUS HISTORIC SITES HERE INCLUDING AN IRON AGE ENCLOSURE, A ROMAN VILLA AND A MEDIEVAL FARM. THE RESEARCH HAS HELPED WITH PRODUCING A COUNTRYSIDE STEWARDSHIP SCHEME TO MANAGE THESE VARIOUS REMAINS, INCLUDING TAKING SOME AREAS OUT OF PLOUGHING.

PHOTOGRAPH: © BATH & CAMERTON ARCHAEOLOGICAL SOCIETY



5.7 REGIONAL PRIORITY 3:

ENCOURAGE WIDER APPRECIATION AND CONSERVATION OF THE HISTORIC DIMENSION OF RURAL AREAS. EXPLORE WAYS IN WHICH AGRI-ENVIRONMENT AND OTHER FUNDING INITIATIVES COULD PROVIDE FURTHER SUPPORT FOR THE SUSTAINABLE MANAGEMENT OF THIS PART OF THE SOUTH WEST'S HISTORIC RESOURCE. AGRI-ENVIRONMENT SCHEMES SHOULD BE MORE CLOSELY TAILORED TO THE CHARACTERISTICS AND POTENTIAL OF THE RURAL HISTORIC ENVIRONMENT.

5.8

THE SOUTH WEST IS THE MOST RURAL OF ALL THE ENGLISH REGIONS WITH A HIGHER PROPORTION OF THE POPULATION LIVING IN RURAL AREAS THAN ANYWHERE ELSE IN ENGLAND. THE LANDSCAPE WE ENJOY TODAY IS THE PRODUCT OF MANY HUNDREDS AND IN SOME CASES MANY THOUSANDS OF YEARS OF LAND MANAGEMENT AND SETTLEMENT. IT MAKES A PARTICULAR CONTRIBUTION TO THE REGION'S IDENTITY, CHARACTER AND APPEAL. THE TWENTIETH CENTURY SAW CONSIDERABLE CHANGES IN LAND MANAGEMENT, PRINCIPALLY IN RESPONSE TO INCENTIVE SCHEMES THAT PRIORITISED AGRICULTURAL PRODUCTION. AREAS SUCH AS THE WILTSHIRE DOWNS SAW A SIGNIFICANT EXPANSION OF ARABLE CULTIVATION TO AREAS OF CHALK GRASSLAND WHICH WERE RICH IN ARCHAEOLOGICAL REMAINS. CHANGES IN AGRICULTURAL SUPPORT MECHANISMS ARE SEEING A SHIFT IN EMPHASIS FROM AGRICULTURAL PRODUCTION TO ENVIRONMENTAL CONSERVATION, INCLUDING POSITIVE MANAGEMENT OF THE HISTORIC ENVIRONMENT. HOWEVER, THE BALANCE OF SUPPORT STILL FAVOURS AGRICULTURAL PRODUCTION OVER CONSERVATION.

5.9

THE CURRENT CRISIS IN FARMING PRESENTS BOTH THE RISK OF FURTHER LOSSES OF HISTORIC FEATURES AND THE PROSPECT OF SUPPORT MEASURES WHICH MARK A FURTHER MOVE AWAY FROM PRODUCTION AND TOWARDS ENVIRONMENTAL GUARDIANSHIP. THERE IS POTENTIAL FOR AGRI-ENVIRONMENT AND RELATED MEASURES TO BE TAILORED TO MEET THE NEEDS OF RURAL ENTERPRISES AND TO MORE FULLY RECOGNISE THE IMPORTANCE OF THE RURAL HISTORIC ENVIRONMENT. THIS SHOULD BUILD ON THE SUCCESS OF SCHEMES SUCH AS ENVIRONMENTALLY SENSITIVE AREAS AND SHOULD PLACE AN EMPHASIS ON POSITIVE MANAGEMENT AND ENHANCEMENT OF THE HISTORIC RESOURCE RATHER THAN SIMPLY ACHIEVING A MEASURE OF PROTECTION. THE REGION FACES A PARTICULAR PROBLEM WITH FINDING APPROPRIATE NEW USES FOR THE LARGE NUMBER OF REDUNDANT HISTORIC FARM BUILDINGS. THERE IS A NEED FOR A RAPID CHARACTERISATION OF THIS RESOURCE.

5.10

CHARACTER APPRAISAL ATTEMPTS TO OVERCOME MANY OF THE PROBLEMS ASSOCIATED WITH THE TRADITIONAL APPROACH OF PROTECTING INDIVIDUALLY-IMPORTANT SITES BY DESIGNATION. THE APPROACH INVOLVES DEVELOPING AN INTEGRATED AND MORE COMPREHENSIVE UNDERSTANDING OF AN HISTORIC RESOURCE AND CONSIDERING WHY IT IS OF IMPORTANCE. THIS PROVIDES THE BASIS FOR DEVELOPING MANAGEMENT RECOMMENDATIONS WHICH REFLECT ITS QUALITIES AND SENSITIVITIES BUT WHICH ALSO PROVIDE THE BASIS FOR MANAGING CHANGE IN A POSITIVE WAY. CHARACTER APPRAISAL SHOULD ALSO BE AN INCLUSIVE AND PARTICIPATIVE PROCESS THAT ALLOWS A WIDE RANGE OF STAKEHOLDER VIEWS TO BE INCLUDED ALONGSIDE THOSE OF HERITAGE PROFESSIONALS. THE USE OF CHARACTER APPRAISAL IN THE DEVELOPMENT OF MANAGEMENT STRATEGIES FOR THE HISTORIC ENVIRONMENT SHOULD THEREFORE BE PROMOTED AT REGIONAL, COUNTY, DISTRICT AND COMMUNITY LEVELS.

ACTION	PARTNERS – LEAD SHOWN FIRST	POSSIBLE RESOURCES	GOALS & TIMESCALE	OUTCOMES	DRAFT REGIONAL PERFORMANCE INDICATORS
1. DEVELOP HISTORIC LANDSCAPE CHARACTERISATION TO ENSURE COMPLETE REGIONAL COVERAGE	EH, LPAs (COUNTY AND OTHER ARCHAEOLOGICAL TEAMS), CA, EN	EH, LPAs. MOST OF THIS IS ONGOING WORK AND WILL NOT REQUIRE SIGNIFICANT ADDITIONAL RESOURCES	COMPLETE COVERAGE BY 2005. BEGIN NOW TO PRESS FOR INCORPORATION IN DEVELOPMENT PLANS AND OTHER REGIONAL DOCUMENTS	HISTORIC LANDSCAPE CHARACTERISATION BECOMES WIDELY ACCEPTED PLANNING AND RURAL MANAGEMENT TOOL. IT WILL PROVIDE A FRAMEWORK FOR LOCAL DECISION-MAKING	PROPORTION OF THE SW SUBJECT TO HISTORIC LANDSCAPE CHARACTERISATION
2. WORK WITH THE CA, EA AND EN TO DEVELOP INTEGRATED POLICIES WHICH REFLECT THE INSEPARABLE INFLUENCE OF PHYSICAL FACTORS, NATURE CONSERVATION AND THE HISTORY OF SETTLEMENT AND LAND USE	SWHEF, EH, LPAs, SSW, GOSW, RA, NT, ETC	EH, CA, EN, EA, SSW, GOSW, RA SHOULD REQUIRE ONLY LIMITED RESOURCES	SEEK AGREEMENT ON REGION-WIDE POLICIES TO FEED INTO REVISED RPG AND REGIONAL DOCUMENTS.	THE LINKS BETWEEN ALL ASPECTS OF THE ENVIRONMENT ARE WIDELY RECOGNISED IN REGIONAL DOCUMENTS AND INCREASINGLY IN MORE LOCAL PLANS ETC.	PARTNERSHIP WORKING AT REGIONAL LEVEL EXAMPLES OF INTEGRATED CONSULTATION RESPONSES AND POLICIES
3. IMPROVE LINKS WITH DEFRA, FC AND FARMING AND LAND-OWNING BODIES TO DEVELOP AGRI-ENVIRONMENT MEASURES WHICH CONSERVE AND ENHANCE THE HISTORIC ENVIRONMENT	EH, LPAs, DEFRA, FC, NFU, CLA, NT	EH, LPAs, DEFRA EH-FUNDED HE COUNTRYSIDE ADVISORS ALREADY IN POST IN 5 COUNTIES	IN THE CONTEXT OF THE CURRENT MID-TERM AGRI-ENVIRONMENT REVIEW, RAISE PROFILE OF HE ISSUES. ENSURE ALL COUNTIES HAVE HE COUNTRYSIDE ADVISORS BY END OF 2004. ALL AGRI-ENVIRONMENT APPLICATIONS TO BE ASSESSED AGAINST HE CRITERIA BY END OF 2004	AGRI-ENVIRONMENT SCHEME PAYMENTS REFLECT THE BROAD RANGE OF ENVIRONMENTAL CONCERNS. HE IN RURAL SW IS BETTER RESOURCED	PARTNERSHIP WORKING AT REGIONAL LEVEL NUMBER OF HE COUNTRYSIDE ADVISERS REFLECTION OF HE IN AGRI-ENVIRONMENT GRANT AWARDS

4. ENSURE ALL LANDSCAPE MANAGEMENT PLANS INCORPORATE HE RECOGNITION AND APPROPRIATE POLICIES	CA, LPAs (PARTICULARLY NPs), AONB CONSERVATN BOARDS, EH, HLF	CA, EH, NPs, HLF, SOME LPAs SHOULD ONLY REQUIRE LIMITED RESOURCES	PROPER RECOGNITION OF HE ISSUES IN ALL NEW LANDSCAPE MANAGEMENT PLANS BY END OF 2004	IMPROVED RECOGNITION OF IMPORTANCE OF HE. MORE HOLISTIC VIEW OF ENVIRONMENTAL MANAGEMENT	NUMBER / % OF INTEGRATED LAND MANAGEMENT PLANS INCLUDING HE ISSUES
5. ENSURE THAT ALL APPROPRIATE STATUTORY LAND-USE PLANS INCORPORATE HISTORIC LANDSCAPE CHARACTERISATION AND THAT THIS IS REFLECTED IN THE DECISION MAKING PROCESS	LPAs, EH, GOSW	LPAs, EH	ALL NEW PLANS MAKE REFERENCE TO HISTORIC LANDSCAPE CHARACTERISATION ONCE SURVEY WORK IS PUBLISHED. ONGOING	WIDER UNDERSTANDING OF HOW CHARACTERISATION CAN IMPROVE PLAN DELIVERY	NUMBER / % OF PLANS AND POLICIES REFERRING TO HLC DEVELOPMENT CONTROL DECISIONS TAKING HLC INTO ACCOUNT
6. ENSURE THAT AGRI-ENVIRONMENT SCHEMES ARE TAILORED AND TARGETED TO REFLECT THE SENSITIVITIES AND OPPORTUNITIES OF THE RURAL HISTORIC ENVIRONMENT	DEFRA, EH, ALGAO, IHBC, CA, NT	DEFRA	PROPER RECOGNITION OF THE WIDER HISTORIC ENVIRONMENT WITHIN AGRI ENVIRONMENT SCHEMES BY 2005	MORE EFFECTIVE AND POSITIVE CONSERVATION OF THE RURAL HISTORIC ENVIRONMENT	REFLECTION OF HE IN AGRI-ENVIRONMENT GRANT AWARDS NUMBER OF GRANTS RESULTING IN POSITIVE MANAGEMENT OF COUNTRYSIDE HE
7. RAPID CHARACTERISATION OF FARM BUILDINGS	EH, LPAs, DEFRA, CA	EH, LPAs, DEFRA, CA	A FRAMEWORK TO ALLOW THE EVALUATION OF FARM BUILDINGS AND THE MOST EFFECTIVE WAY OF ENSURING CONSERVATION	MORE CONSISTENT APPROACH TO THE SENSITIVE CONVERSION AND CONSERVATION OF REDUNDANT RURAL BUILDINGS	NUMBER OF REDUNDANT FARM BUILDINGS SUBJECT TO APPROPRIATE AND SENSITIVE CONVERSION AND AFTERUSE



QUEENS SEDGEMOOR, GLASTONBURY, SOMERSET

A LATE BRONZE AGE RITUAL PILE ALIGNMENT REVEALED BY PEAT SHRINKAGE IN QUEENS SEDGEMOOR NEAR GLASTONBURY. WATERLOGGED STRUCTURES SUCH AS THIS AND THE WELL-KNOWN PREHISTORIC TRACK WAYS FROM THE BRUE VALLEY ARE AT RISK FROM PEAT WASTAGE WHICH WILL DESTROY 0.45 TO 0.79M OF PEAT IN GRASSLAND AND UP TO 2M IN ARABLE CULTIVATION OVER THE NEXT 100 YEARS. THIS IS ENOUGH TO DESTROY ALL THE NATIONALLY IMPORTANT WETLAND MONUMENTS IN THE SOMERSET MOORS INCLUDING 15 SCHEDULED MONUMENTS.

PHOTOGRAPH: © SOMERSET COUNTY COUNCIL



DINNINGTON ROMAN VILLA, SOUTH SOMERSET

MUCH OF THE RURAL ARCHAEOLOGY IN THE SOUTH WEST IS SUBJECT TO PLOUGH DAMAGE, PARTICULARLY IN THE EASTERN HALF OF THE REGION. THE ROMAN MOSAIC IN THIS FIELD CLEARLY SHOWS WHERE A PLOUGH HAS CUT ACROSS IT. EFFORTS ARE NOW BEING MADE TO CONSERVE THE VILLA REMAINS AS PART OF AN AGRI-ENVIRONMENT SCHEME.

PHOTOGRAPH: © SOMERSET COUNTY COUNCIL

5.11 REGIONAL PRIORITY 4:

INCREASE OUR UNDERSTANDING OF THE SOUTH WEST'S COASTAL AND MARITIME HISTORIC ENVIRONMENTS AND WETLAND LANDSCAPES AS A MATTER OF URGENCY. WORK WITH THOSE RESPONSIBLE FOR MANAGING THESE ENVIRONMENTS AND, WHERE APPROPRIATE, SEEK ADEQUATE PROTECTION.

5.12 WITH A COASTLINE LONGER THAN ANY OTHER REGION IN THE UK, OFTEN TREACHEROUS SEAS AND A LONG HISTORY OF MARITIME TRADE, COMMUNICATION AND WARFARE, THE SOUTH WEST HAS THE POTENTIAL FOR VERY SIGNIFICANT ARCHAEOLOGICAL FINDS ALONG THE COAST AND BELOW THE LOW WATER MARK. THE REGION HAS 28% OF THE KNOWN WRECK SITES IN ENGLAND AND HALF THE NATIONAL TOTAL OF VESSELS LYING ON OR IN THE SEABED AND DESIGNATED UNDER THE PROTECTION OF WRECKS ACT 1973. ADDED TO THIS ARE THE SITES AND LANDSCAPES SUCH AS THOSE ALONG THE SEVERN ESTUARY THAT HAVE BEEN SUBMERGED FOLLOWING CHANGES IN SEA LEVEL. DESPITE THIS RICH POTENTIAL, THE MARINE AND COASTAL ENVIRONMENT IS PERHAPS THE LEAST UNDERSTOOD AND MANAGED OF ALL HISTORIC ENVIRONMENTS WITHIN THE SOUTH WEST. WHILE ENGLISH HERITAGE HAS RECENTLY ASSUMED RESPONSIBILITY FOR THE HISTORIC ENVIRONMENT LYING BETWEEN THE LOW WATER LINE AND THE 12 MILE LIMIT, RESOURCES ARE LIMITED AND IT IS LIKELY THAT THE EXISTING RELIANCE ON THE VOLUNTARY SECTOR WILL CONTINUE INTO THE FUTURE. WITH GROWING INTEREST IN ACTIVITIES SUCH AS OFF SHORE WINDFARM DEVELOPMENT AND EVEN MARINE AGGREGATE EXTRACTION, THERE IS AN URGENT NEED BOTH TO INCREASE OUR KNOWLEDGE OF THESE

ENVIRONMENTS AND TO SECURE ADEQUATE PROTECTION WHERE APPROPRIATE. THE RECENT DESIGNATION OF THE DORSET AND EAST DEVON COAST AS A WORLD HERITAGE SITE, ALTHOUGH PRINCIPALLY FOR ITS NATURAL ENVIRONMENT QUALITIES, WILL BRING ADDED PRESSURES TO THE AREA'S HISTORIC ASSETS AND THIS WILL NEED CAREFUL MANAGEMENT.

5.13 WETLAND LANDSCAPES AND MONUMENTS ARE NOW RECOGNISED AS A CRITICAL NATURAL AND CULTURAL RESOURCE. IT HAS RECENTLY BEEN ESTABLISHED THAT THEY WILL BE A RAPIDLY DISAPPEARING RESOURCE UNLESS POSITIVE MANAGEMENT STRATEGIES ARE DEVELOPED IN THE NEXT DECADE. THIS IS PARTICULARLY ACUTE FOR THE SOMERSET LEVELS AND MOORS WHICH HAS THE HIGHEST CONCENTRATION OF SURVIVING ORGANIC REMAINS OF ANY OF THE EXTENSIVE WETLAND AREAS IN ENGLAND.

ACTION	PARTNERS – LEAD SHOWN FIRST	POSSIBLE RESOURCES	GOALS & TIMESCALE	OUTCOMES	DRAFT REGIONAL PERFORMANCE INDICATOR
1. DEFINE REGIONAL PRIORITIES FOR RESEARCHING COASTAL, WETLAND AND MARITIME ENVIRONMENTS	EH, SWHEF, LPAs, ALGAO, HIGHER ED SECTOR	EH, LPAs, FURTHER AND HIGHER ED SECTOR	DRAW UP AND CONSULT ON SUGGESTED LIST OF PRIORITIES BY END OF 2004	AGREED PRIORITIES FOR ACTION BY MID 2005	DEFINITION OF COASTAL, WETLAND AND MARITIME RESEARCH PRIORITIES
2. WORK WITH POTENTIAL DEVELOPERS TO INCREASE UNDERSTANDING OF SENSITIVITIES OF THE HE IN COASTAL AND WETLAND, MARITIME ENVIRONMENTS	LPAs, EH, ALGAO, PS	LPAs, EH, PS	RESPOND TO DEVELOPMENT PROPOSALS INITIALLY WITH LONG-TERM GOAL (POST 2006) OF BECOMING MORE PROACTIVE	PREVENTION OF INAPPROPRIATE DEVELOPMENT AND MITIGATION OF OTHER DEVELOPMENT	EXAMPLES OF PARTNERSHIP WORKING WITH COASTAL, WETLAND AND MARITIME DEVELOPERS
3. INTEGRATION OF APPROPRIATE HE POLICIES INTO DORSET AND DEVON COAST WHS IMPLEMENTATION PLAN	LPAs, EN, EH, CA, NT	LPAs, EN, CA	TO FIT IN WITH IMPLEMENTATION PLAN DEADLINES	APPROPRIATE 'HOLISTIC' MANAGEMENT OF THE WHS AREA TO ENSURE THAT THE HE IS NOT DAMAGED BY MANAGEMENT WORKS	POSITIVE INCLUSION OF HE ISSUES IN WHS IMPLEMENTATION PLAN
4. DEFINE PRIORITIES FOR THE CONSERVATION OF THE CULTURAL HERITAGE OF THE SOMERSET LEVELS AND OTHER WETLAND AREAS IN THE SW	LPAs, EA, DEFRA, EH, EN, CA	EH, EA, DEFRA, CA	CARRY OUT INITIAL ASSESSMENT PROJECT BY END OF 2005	PRIORITIES FOR MITIGATION AS PART OF INTEGRATED ENVIRONMENTAL SCHEMES	POSITIVE INCLUSION OF HE ISSUES IN PRIORITIES FOR WETLAND MANAGEMENT

5.14 REGIONAL PRIORITY 5:

PROMOTE THE DESIGN OF BUILDINGS AND LANDSCAPE THAT IS SENSITIVE TO ITS LOCATION. OUR AIM SHOULD BE TO ENHANCE THE SOUTH WEST'S HISTORIC ENVIRONMENT AND, ULTIMATELY, TO ADD TO IT BY CHAMPIONING APPROPRIATE CONTEMPORARY SOLUTIONS TO DESIGN PROBLEMS.

5.15 A KEY PART OF THE VISION IS THE PROMOTION OF HIGH QUALITY DESIGN IN NEW BUILDINGS AND LANDSCAPES. THE SOUTH WEST HAS A REMARKABLE VARIETY OF BUILDING MATERIALS AND STYLES. DEVELOPMENT OVER THE PAST CENTURY HAS INCREASINGLY LOST THE CLEAR LINK BETWEEN PLACE, MATERIALS AND DESIGN. WHILE THERE HAVE OFTEN BEEN GOOD ECONOMIC REASONS FOR THIS, THE RESULT HAS BEEN A LOSS OF LOCAL DISTINCTIVENESS AND THE DEVELOPMENT OF A PATTERN OF BUILDING AND LANDSCAPE DESIGN WHICH SHOWS LITTLE VARIATION ACROSS THE COUNTRY LET ALONE THE REGION. THE SOUTH WEST'S HISTORIC ENVIRONMENT AMPLY DEMONSTRATES THE CHANGING USE OF MATERIALS AND BUILDING TECHNIQUES OVER TIME. CONTEMPORARY DEVELOPMENT, WHILST RESPECTING THE CHARACTER, SCALE AND SETTING OF THE HISTORIC ENVIRONMENT, SHOULD MAKE APPROPRIATE USE OF MODERN BUILDING TECHNOLOGY. IF WE STOP THE CLOCK, WE WILL SIMPLY CREATE A PASTICHE WHICH DOES LITTLE TO REFLECT THE WAY WE LIVE OUR LIVES TODAY. GOOD DESIGN SHOULD BE OF A CHARACTER AND QUALITY THAT REINFORCES LOCAL DISTINCTIVENESS AND, IN TIME, ADDS TO THE HISTORIC ENVIRONMENT ITSELF.

5.16 BUILDING IN CONTEXT: NEW DEVELOPMENT IN HISTORIC AREAS PUBLISHED BY ENGLISH HERITAGE AND THE COMMISSION

ON ARCHITECTURE AND THE BUILT ENVIRONMENT PROVIDES VALUABLE GUIDANCE ON THE PRINCIPLES OF GOOD DESIGN IN HISTORIC AREAS¹³. IT SUGGESTS THAT GOOD PROJECTS SHOULD:

- RELATE WELL TO THE GEOGRAPHY AND HISTORY OF THE PLACE AND THE LIE OF THE LAND;
- SIT HAPPILY IN THE PATTERN OF EXISTING DEVELOPMENT AND ROUTES THROUGH AND AROUND IT;
- RESPECT IMPORTANT VIEWS;
- RESPECT THE SCALE OF NEIGHBOURING BUILDINGS;
- USE MATERIALS AND BUILDING METHODS WHICH ARE AS HIGH IN QUALITY AS THOSE USED IN NEIGHBOURING BUILDINGS;
- CREATE NEW VIEWS AND JUXTAPOSITIONS WHICH ADD TO THE VARIETY AND TEXTURE OF THE SETTING.

5.17 CASE STUDIES INCLUDE NEW COTTAGES AT CORFE CASTLE IN DORSET AND THE PICTURE HOUSE IN EXETER. THE DOCUMENT COULD EQUALLY HAVE DRAWN ON A GROWING NUMBER OF GOOD EXAMPLES FROM ACROSS THE SOUTH WEST. IT DRAWS PRAGMATIC CONCLUSIONS, NOTING THAT SUCCESSFUL DESIGN CAN BE PRODUCED BY FOLLOWING HISTORIC PRECEDENTS, BY ADAPTING THEM OR EVEN BY CONTRASTING WITH THEM. SENSITIVITY TO CONTEXT AND THE USE OF TRADITIONAL MATERIALS SHOULD NOT BE INCOMPATIBLE WITH MODERN DESIGN.

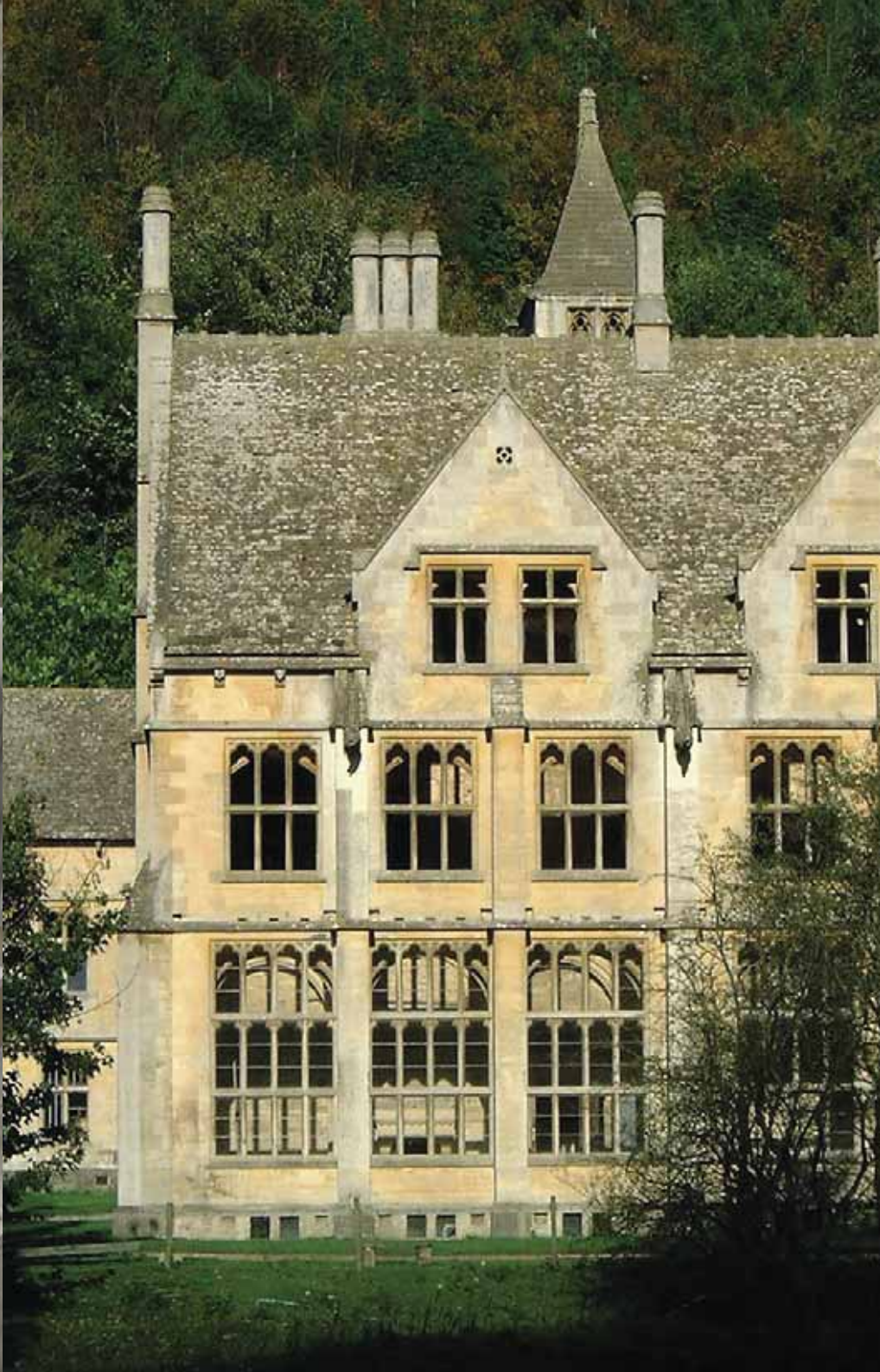


PICTURE HOUSE, EXETER, DEVON

THE SCHEME INVOLVED THE CREATION OF A TWO-SCREEN CINEMA IN THE CITY CENTRE OF EXETER BY ADAPTING AND EXTENDING A FORMER 1930S BUS GARAGE. BECAUSE THE BUILDING PROVIDES FULL DISABLED ACCESS, INCLUDES GALLERY SPACE AND RUNS AN EDUCATION PROGRAMME, IT WAS ELIGIBLE FOR ARTS LOTTERY FUNDING OF ALMOST SEVENTY FIVE PER CENT OF THE CAPITAL COST. THE COMMERCIAL SUCCESS OF THE CINEMA SINCE IT OPENED HAS VINDICATED THE CINEMA OPERATOR'S BELIEF IN THE CONTRIBUTION WHICH ARCHITECTURE CAN MAKE TO COMMERCIAL SUCCESS. IN THE WORDS OF LYN GOLEBY OF CITY SCREEN 'THE BRICKS AND MORTAR ARE AS IMPORTANT AS THE CELLULOID'. ARCHITECTURALLY, THE CINEMA DEMONSTRATES THAT IT IS POSSIBLE TO BE THEATRICAL AND RESTRAINED ALL AT THE SAME TIME. IT ILLUSTRATES HOW AN IMAGINATIVE DESIGN SOLUTION CAN BE USED TO TACKLE A DIFFICULT AND CHALLENGING SITE. IT ALSO SHOWS THAT A USE WHICH IS INITIALLY SEEN AS THREATENING CAN COME TO BE REGARDED AS A HIGHLY DESIRABLE FACILITY.

PHOTOGRAPH: © ENGLISH HERITAGE

ACTION	PARTNERS – LEAD SHOWN FIRST	POSSIBLE RESOURCES	GOALS & TIMESCALE	OUTCOMES	DRAFT REGIONAL PERFORMANCE INDICATOR
1. ENSURE THAT HE ISSUES ARE REFLECTED IN THE ENVIRONMENTAL MODULE OF REGIONAL CENTRE OF EXCELLENCE	RDA, EH, LPAs	RDA, LPAs, EH	REGIONAL ARCHITECTURE AND BUILT ENVIRONMENT INITIATIVES ALL TO TAKE ACCOUNT OF HE ISSUES. ONGOING	REGIONAL CENTRE OF EXCELLENCE TO BECOME IMPORTANT FOCUS OF HE KNOWLEDGE	COVERAGE OF HE IN REGIONAL CENTRE OF EXCELLENCE ENVIRONMENTAL MODULE
2. WORK WITH CABE, RIBA, RTPI, IHBC, RICS AND OTHERS TO ENCOURAGE AND PROMOTE GOOD DESIGN AND CONSTRUCTION	SWHEF, EH, CABE, HLF, RIBA, RTPI, LI, IHBC, RICS, LPAs, SW ARTS, SSW, RDA, NT, EDUCATION SECTOR	PROFESSIONAL INSTITUTIONS, AGENCIES, LPAs AND EDUCATION SECTOR	CONTINUE SUCCESS OF SW ARCHITECTURE AND BUILT ENVIRONMENT WORK AT REGIONAL LEVEL. ONGOING	SW BECOMES RECOGNISED AS A REGION OF DESIGN AND CONSTRUCTION EXCELLENCE	EXAMPLES OF EXCELLENCE IN DESIGN AND CONSTRUCTION EXAMPLES OF SHARING BEST PRACTICE
3. SUPPORT THE WORK OF SSW IN THE DEVELOPMENT AND IMPLEMENTATION OF THE SUSTAINABLE CONSTRUCTION CHARTER (SCC)	SSW, NT, EH, LPAs, PROFESSIONAL INSTITUTIONS	SSW	NEXT EDITION OF THE SCC TO INCORPORATE MORE ON HE ISSUES. BY END OF 2004	SUPPORT FOR SCC GROWS IN THE HE SECTOR	COVERAGE OF HE IN THE SCC. NUMBER OF HE ORGANISATIONS SIGNING UP TO THE SCC
4. ENSURE THAT ALL STATUTORY PLANS HAVE APPROPRIATE POLICIES AND GUIDANCE THAT ENCOURAGE HIGH QUALITY DESIGN	SWHEF, LPAs, GOSW, RDA	LPAs, GOSW, EH. STATUTORY PLAN RESOURCES IN PLACE	REGIONAL CENTRE OF EXCELLENCE AND TO DISSEMINATE GOOD PRACTICE. SWHEF TO ASSIST. ONGOING	ALL RELEVANT NEW PLANS TO HAVE APPROPRIATE POLICIES AND/OR GUIDANCE	NUMBER / % OF STATUTORY PLANS INCLUDING POLICIES PROMOTING EXCELLENCE IN DESIGN AND CONSTRUCTION
5. WORK WITH DEVELOPERS TO INCREASE UNDERSTANDING OF THE HE AND TO PROMOTE SENSITIVE DEVELOPMENTS WHICH CONTRIBUTE TO LOCAL DISTINCTIVENESS	LPAs, RDA, PS	LPAs, RDA, PS	AWARENESS RAISING OF ISSUES AMONGST PRIVATE SECTOR. ONGOING	IMPROVED GENERAL QUALITY OF DEVELOPMENT	EXAMPLES OF DEVELOPMENT WHERE HE AND LOCAL CHARACTER HAVE BEEN FULLY AND POSITIVELY REFLECTED IN DESIGN



WOODCHESTER MANSION, GLOUCESTERSHIRE

AT WOODCHESTER MANSION, ENGLISH HERITAGE AND THE HERITAGE LOTTERY FUND ARE GRANT-AIDING THE TRAINING OF STONE MASONS IN THE USE OF TRADITIONAL MATERIALS AND REPAIR TECHNIQUES. LEFT UNFINISHED WHEN ITS PATRON RAN OUT OF FUNDS IN THE NINETEENTH CENTURY, THIS BUILDING IS A WONDERFUL ESSAY IN STONEMASONRY, WITH AS MANY DETAILS AS POSSIBLE BEING CRAFTED FROM LOCAL LIMESTONE. THE MANSION WAS VACANT FOR MANY YEARS AND SUBJECT TO REPEATED VANDALISM UNTIL BEING TAKEN ON BY A TRUST.

LEFT:
PHOTOGRAPH: © WOODCHESTER MANSION TRUST

5.18 REGIONAL PRIORITY 6:

PROMOTE THE USE OF TRADITIONAL CONSERVATION AND MANAGEMENT SKILLS WHEREVER POSSIBLE AND ENSURE PROFESSIONALS HAVE A GOOD UNDERSTANDING OF CURRENT BEST PRACTICE. ENCOURAGE OPPORTUNITIES FOR TRAINING ACROSS THE SOUTH WEST.

- 5.19 MODERN LAND MANAGEMENT PRACTICES AND BUILDING TECHNIQUES, TOGETHER WITH A DECLINE IN TRADITIONAL TRAINING SYSTEMS, HAVE RESULTED IN A SERIOUS LOSS OF MANY TRADITIONAL SKILLS. AT THE SAME TIME THERE IS A SHORTAGE OF ARCHITECTS AND LANDSCAPE DESIGNERS WITH TRAINING IN HISTORIC AND VERNACULAR DESIGN. THERE IS AN URGENT NEED TO PROMOTE AND SUPPORT THE DEVELOPMENT OF CONSERVATION TRAINING AND CRAFT SKILLS AND TO TAILOR THIS TO THE NEEDS OF THE REGION AND THE MORE LOCAL HISTORIC ENVIRONMENT. THIS MUST BE BALANCED WITH TRAINING OF PROFESSIONALS AND AWARENESS RAISING IN THE BUILDING SECTOR TO DEVELOP THEIR UNDERSTANDING AND APPRECIATION OF HISTORIC ENVIRONMENT ISSUES. IN SOME CASES THIS REQUIRES EXISTING TRAINING TO BE SUPPLEMENTED OR NEW COURSES DEVELOPED. CONTINUING PROFESSIONAL DEVELOPMENT COULD ALSO PROVIDE A WAY OF RAISING AWARENESS OF THE HISTORIC ENVIRONMENT AMONG PRACTISING PROFESSIONALS.

6

ACTION	PARTNERS – LEAD SHOWN FIRST	POSSIBLE RESOURCES	GOALS & TIMESCALE	OUTCOMES	DRAFT REGIONAL PERFORMANCE INDICATOR
1. AS A PRIORITY, INCREASE TRAINING OPPORTUNITIES IN TRADITIONAL CONSERVATION AND MANAGEMENT SKILLS	EDUCATION SECTOR, SWHEF, TRADE BODIES, RDA, HLF, EH, NT, LPAs, SW ASSOCIATION FOR EDUCATION AND TRAINING (SWAFET)	EDUCATION SECTOR, RDA, HLF, EH, LPAs, SWAFET	IMPROVED RANGE OF SPECIALIST COURSES, PARTICULARLY IN REGIONAL SKILLS (THATCH, COB, ETC). ONGOING	HIGHER QUALITY BUILDING REPAIR AND MORE SUSTAINABLE AND LOCALLY DISTINCTIVE NEW FORMS OF CONSTRUCTION	NUMBER OF TRAINING OPPORTUNITIES RELATING TO HE SKILLS
2. AS A PRIORITY ENHANCE PROVISION OF TRAINING FOR BUILDING, LANDSCAPE, CONSERVATION AND ARCHAEOLOGICAL PROFESSIONALS. THIS SHOULD INCLUDE FORMAL EDUCATION AND ONGOING CPD	FE AND HIGHER ED SECTORS, PROFESSIONAL BODIES (LI, RIBA, RTPI, ETC), LPAs, SWHEF, EH, RDA, SWAFET, ALGAO, IHBC	FE AND HIGHER ED SECTORS, EH, RDA, SWAFET, EH, PROFESSIONAL BODIES, ALGAO, IHBC,	IMPROVED RANGE OF SPECIALIST COURSES, PARTICULARLY IN REGIONAL SKILLS. ONGOING	BETTER TRAINED PROFESSIONALS WHO ARE ABLE TO RESPOND TO THE SWs DISTINCTIVE ENVIRONMENT	NUMBER OF FE, HE AND CPD COURSES PROVIDING TRAINING IN RELEVANT ASPECTS OF THE HE



TEMPLE CHURCH, BRISTOL

ENGLISH HERITAGE HAS RECENTLY BEEN INVOLVED IN A CITIZENSHIP PROJECT AT TEMPLE CHURCH, BRISTOL. DEVASTATED IN THE BLITZ OF 1940, TEMPLE CHURCH WITH ITS CHARACTERISTIC LEANING TOWER, HAS REMAINED A PUBLICLY INACCESSIBLE ROOFLESS BUILDING. CHILDREN FROM A LOCAL SUMMER PLAY SCHEME RECENTLY SPENT TWO DAYS ON SITE CONSIDERING CONSERVATION ISSUES AND THE POSSIBLE REUSE OF THIS HISTORIC BUILDING. STARTING AT THE SITE ITSELF, A LOCAL TOURING EXHIBITION OF THE WORK WAS PRODUCED AS PART OF THE ANNUAL HERITAGE OPEN DAY. THIS IS KNOWN LOCALLY AS THE BRISTOL OPEN DOORS DAY.

PHOTOGRAPH: © ENGLISH HERITAGE

5.20 REGIONAL PRIORITY 7:

ENSURE THE EDUCATION SECTOR IN THE SOUTH WEST TAKES FULL ACCOUNT OF THE VALUE OF THE HISTORIC ENVIRONMENT. PROMOTE THE WIDEST UNDERSTANDING AND APPRECIATION OF THE HISTORIC ENVIRONMENT AT LOCAL, COUNTY AND REGIONAL LEVELS.

5.21 THE HUGE NUMBER OF PEOPLE VISITING HISTORIC SITES ACROSS THE SOUTH WEST IS A REFLECTION OF PEOPLE'S INTEREST IN THE HISTORIC ENVIRONMENT. BROADENING UNDERSTANDING OF AND INVOLVEMENT IN THE HISTORIC ENVIRONMENT IS A CONSIDERABLE CHALLENGE. LEARNING ABOUT THE HISTORIC ENVIRONMENT WILL ESTABLISH A LIFELONG UNDERSTANDING. BY INTEGRATING CONSIDERATION OF THE HISTORIC ENVIRONMENT OF THE SOUTH WEST INTO THE NEW CURRICULUM SUBJECT OF CITIZENSHIP - AS WELL AS HISTORY, GEOGRAPHY, ENVIRONMENTAL SCIENCE, AND ART AND DESIGN - YOUNG PEOPLE AND, ULTIMATELY, LIFELONG LEARNERS WILL DEVELOP THEIR UNDERSTANDING OF PLACES

AND THEIR SIGNIFICANCE. IT SHOULD ALSO CREATE A LINK THROUGH TO THE HERITAGE SECTOR, ENCOURAGING A NEW GENERATION TO DEVELOP RELEVANT SKILLS AND EXPERTISE, OR TO REFLECT THE HISTORIC ENVIRONMENT IN RELATED DISCIPLINES. THERE ARE ALSO LINKS TO THE REGIONAL ARTS STRATEGY WHICH HIGHLIGHTS THE IMPORTANCE OF THE HISTORIC ENVIRONMENT FOR THE ARTS.

5.22 THE EDUCATION SECTOR REQUIRES SUPPORT IN TERMS OF INFORMATION, TRAINING, AND PRACTICAL ASSISTANCE WITH FIELD AND SITE VISITS. AT THE SAME TIME PROVIDERS OF HERITAGE EDUCATION ALSO NEED TRAINING AND SUPPORT.

5.23 EDUCATION AND INTERPRETATION NEED TO EXTEND MORE WIDELY. THE HERITAGE SECTOR SHOULD WORK WITH PUBLIC AND PRIVATE OWNERS. THERE IS ALSO AN IMPORTANT ROLE FOR MORE LOCAL INITIATIVES TO HELP LOCAL COMMUNITIES DEVELOP AN APPRECIATION AND UNDERSTANDING OF THEIR HISTORIC ENVIRONMENT.

ACTION	PARTNERS – LEAD SHOWN FIRST	POSSIBLE RESOURCES	GOALS & TIMESCALE	OUTCOMES	DRAFT REGIONAL PERFORMANCE INDICATOR
1. ENSURE THAT RELEVANT UNIVERSITY AND OTHER FE COURSES IN THE HE REFLECT LOCAL IDENTITY AND NEEDS	FE & HIGHER ED SECTORS, PROFESSIONAL BODIES, LPAs, SWHEF, EH, RDA, SWAFET	FE & HIGHER ED SECTORS, EH, RDA, SWAFET	INCREASED REGIONAL INPUT. ONGOING	GRADUATES WITH APPROPRIATE LOCAL KNOWLEDGE	NUMBER OF GRADUATES WITH TRAINING IN REGIONAL, LOCAL HE ISSUES
2. EXPLORE WAYS IN WHICH THE SOUTH WEST'S HE CAN BE MADE MORE RELEVANT TO FORMAL EDUCATION AT ALL LEVELS	FE & HIGHER ED SECTORS, PROFESSIONAL BODIES, LPAs, SWHEF, EH, HLF, RDA, SWAFET, LEAs, NT	FE & HIGHER ED SECTORS, EH, HLF, RDA, SWAFET, LEARNING AND SKILLS COUNCILS (LSCs)	INCREASED REGIONAL INPUT. ONGOING	WIDER UNDERSTANDING AND APPRECIATION OF HE ASSETS	NUMBER OF FORMAL EDUCATIONAL CURRICULA COVERING REGIONAL ASPECTS OF THE HE NUMBER OF FORMAL EDUCATION VISITS TO HISTORIC SITES
3. IMPROVE LINKS BETWEEN ORGANISATIONS ALREADY PROVIDING HE EDUCATION TO MAXIMISE IMPACT	SWHEF, HLF, SWAFET, EH, FE & HIGHER ED SECTORS, NT, VS AND OTHER AMENITY SOCIETIES	FE & HIGHER ED SECTORS, RDA, SWAFET, EH, HLF	SWHEF TO PLAY KEY ROLE IN CO-ORDINATING EFFORT. ONGOING	INCREASE SYNERGY AND EFFICIENCY IN DELIVERING HE MESSAGE	NUMBER OF PARTNERSHIPS CO-ORDINATING INFORMATION PROVISION TO EDUCATION SECTOR
4. PROMOTE AN INCLUSIVE APPROACH TO INFORMATION, INTERPRETATION AND EDUCATION TO REFLECT DIFFERING SOCIAL AND ETHNIC BACKGROUNDS	FE & HIGHER ED SECTORS, PROFESSIONAL BODIES, LPAs, SWHEF, EH, HLF, RDA, SWAFET, NT, LEAs	FE & HIGHER ED SECTORS, EH, HLF, RDA, SWAFET	INCREASED REGIONAL INPUT. ONGOING	WIDER UNDERSTANDING AND APPRECIATION OF HE ASSETS	NUMBER OF HE RELATED INITIATIVES CREATING AN INCLUSIVE APPROACH TO INFORMATION, INTERPRETATION AND EDUCATION NUMBER OF INITIATIVES ENGAGING UNDER-REPRESENTED AND SOCIALLY EXCLUDED GROUPS WITH THE HISTORIC ENVIRONMENT

5. WORK WITH LOCAL MEDIA TO INCREASE UNDERSTANDING OF THE WIDER HE AND ITS IMPORTANCE FOR PRESENT DAY LIVES	FE & HIGHER ED SECTORS, PROFESSIONAL BODIES, LPAs, HLF, SWHEF, EH, RDA, SWAFET, LPAs, NT	FE & HIGHER ED SECTORS, EH, HLF, RDA, SWAFET	INCREASED REGIONAL INPUT. ONGOING	WIDER UNDERSTANDING AND APPRECIATION OF HE ASSETS	EXAMPLES OF GOOD PRACTICE IN WORKING WITH MEDIA IN RELATION TO THE SW HE
6. AT ALL LEVELS IDENTIFY AND SUPPORT LEADERS AND DECISION-MAKERS WHO ARE INSTRUMENTAL IN PROMOTING AND CONSERVING THE HE	FE & HIGHER ED SECTORS, PROFESSIONAL BODIES, LPAs, SWHEF, EH, HLF, RDA, SWAFET, RA, LPAs, VS, LEAs, FORMAL EDU SECTOR	FE & HIGHER ED SECTORS, EH, RDA, SWAFET	INCREASED REGIONAL INPUT. ONGOING	WIDER UNDERSTANDING AND APPRECIATION OF HE ASSETS	NUMBER OF EXAMPLES OF POSITIVE SUPPORT
7. DEVELOP LINKS WITH DCMS-FUNDED RESOURCE IN THE REGION E.G. THE NEW SW LEARNING HUB WHICH INVOLVES MUSEUMS, ARCHIVES AND LIBRARIES SECTOR	AREA MUSEUM COUNCILS, ARCHIVES & LIBRARIES REPRESENTATIVES, EH, VS, HLF	AREA MUSEUM COUNCILS, ARCHIVES & LIBRARIES REPRESENTATIVES, EH, VS, HLF	DEVELOPMENT OF CROSS-SECTOR PROJECTS BY END OF 2007	GREATER LINKAGES BETWEEN SECTORS. ADDED VALUE OF LINKING SUCH THINGS AS LISTED MUSEUMS AND THEIR COLLECTIONS	EXAMPLES OF INTEGRATED APPROACHES TO HE WITHIN THE REGION
8. DEVELOP LINKS BETWEEN EDUCATION, LIFELONG LEARNING AND THE DEVELOPMENT OF SKILLS RELEVANT TO THE HERITAGE SECTOR	EDUCATION SECTOR, SWHEF, TRADE BODIES, RDA, EH, NT, LPAs, SWAFET	EDUCATION SECTOR, RDA, EH, LPAs, SWAFET	DEVELOPMENT OF A VARIETY OF ROUTES INTO EDUCATION AND TRAINING. ONGOING	STRONGER LINKS BETWEEN THE PROCESS OF LEARNING AND THE MANAGEMENT OF THE HISTORIC ENVIRONMENT	NUMBER OF EXAMPLES OF INITIATIVES BUILDING LINKS BETWEEN EDUCATION, LIFELONG LEARNING AND SKILLS RELEVANT TO HE SECTOR



PORTLAND CASTLE

AT PORTLAND CASTLE, ENGLISH HERITAGE HAS IMPLEMENTED A PACKAGE OF IMPROVEMENTS DESIGNED TO FACILITATE ACCESS FOR ALL. PHYSICAL FACILITIES HAVE BEEN IMPROVED AND A RANGE OF INTERPRETATION AIDS FOR PEOPLE WITH SPECIAL NEEDS INTRODUCED INCLUDING CAR PARKING, TOILETS, NEW FLOORS AND HAND RAILS. IN 2003 A NEW CONTEMPORARY GARDEN WAS OPENED WHICH CONTAINS AN AMPHITHEATRE AND SEATING FOR 200 PEOPLE. THE PHOTOGRAPH SHOWS HOW THE NEW OAK FLOOR HAS PROVIDED DISABLED ACCESS TO THE ENTIRE GROUND FLOOR OF THE CASTLE; THE WORKS BEING PART-FUNDED THROUGH THE LANDFILL TAX.

PHOTOGRAPH: © ENGLISH HERITAGE

5.24 **REGIONAL PRIORITY 8:**
REMOVE PHYSICAL, CULTURAL AND SOCIAL BARRIERS WHICH INHIBIT ACCESS, UNDERSTANDING OR ENJOYMENT OF THE SOUTH WEST'S HISTORIC ENVIRONMENT.

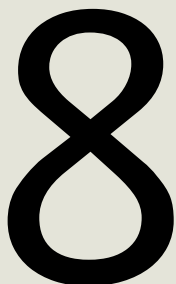
5.25 SOME COMMENTATORS FEEL THAT THE BEST KNOWN HISTORIC ATTRACTIONS HAVE BECOME ICONS WHICH IN MANY WAYS HAVE LITTLE TO DO WITH PEOPLE'S ORDINARY LIVES. THIS CAN ACT AS A SERIOUS BARRIER TO PEOPLE'S INVOLVEMENT IN THE HISTORIC ENVIRONMENT: PEOPLE MAY FEEL DISCONNECTED FROM THEIR HERITAGE AND ROOTS; CERTAIN GROUPS MAY FEEL ALIENATED FROM THE KINDS OF HISTORY THAT ARE POPULARLY PRESENTED; PERCEPTIONS OF HISTORY CAN BE SKEWED TOWARDS THE NATIONALLY IMPORTANT AT THE EXPENSE OF THE LOCALLY MEANINGFUL AND, IMPORTANTLY, LESS WEIGHT GIVEN TO CONSERVING THE WIDER HISTORIC ENVIRONMENT THAN SHOULD BE THE CASE. THE PAST CULTURAL AND SETTLEMENT HISTORY OF THE SOUTH WEST HAS MUCH TO TEACH US ABOUT THE DIVERSE AND MULTI-CULTURAL SOCIETY IN WHICH WE LIVE TODAY.

5.26 OVERCOMING THESE BARRIERS IS A TWO WAY PROCESS. ON THE ONE HAND INITIATIVES TO INCREASE AWARENESS AND UNDERSTANDING OF THE HISTORIC ENVIRONMENT SHOULD HELP PEOPLE APPRECIATE AND VALUE ITS MORE LOCAL AND EVERYDAY COMPONENTS. AT THE SAME TIME, THE HERITAGE SECTOR SHOULD DEVELOP A BETTER UNDERSTANDING OF HOW AND WHY PEOPLE VALUE THE HISTORIC ENVIRONMENT, AND THIS SHOULD BE USED TO INFORM THE WAY IN WHICH SIGNIFICANCE IS CONSIDERED. PARTICULAR ATTENTION SHOULD BE GIVEN TO EXCLUDED GROUPS IN THE DEVELOPMENT

OF MORE ACCESSIBLE AND INCLUSIVE MANAGEMENT OF THE HISTORIC RESOURCE. AN EXAMPLE OF THIS MIGHT BE WORKING WITH GROUPS REPRESENTING DIFFERENT ETHNIC BACKGROUNDS TO FIND WAYS OF MAKING HISTORIC SITES OF MORE RELEVANCE TO THEM.

5.27 IT IS IMPORTANT TO RECOGNISE THAT BARRIERS CAN BE PHYSICAL AS WELL AS CULTURAL. LOCAL PLANNING AUTHORITIES, SWHEF AND EH SHOULD WORK WITH OWNERS OF HISTORIC PROPERTIES TO ENSURE THAT PEOPLE WITH DISABILITIES ARE ABLE TO VISIT AND ENJOY THE HISTORIC ENVIRONMENT IN AN EASY AND DIGNIFIED WAY. OTHER FACTORS, INCLUDING LACK OF ACCESS TO PRIVATE TRANSPORT OR THE COST OF VISITING HISTORIC SITES MAY ALSO ACT AS BARRIERS AND SHOULD BE CONSIDERED IN THE WAY THAT THE HISTORIC ENVIRONMENT IS MANAGED AND PRESENTED.

ACTION	PARTNERS – LEAD SHOWN FIRST	POSSIBLE RESOURCES	GOALS & TIMESCALE	OUTCOMES	DRAFT REGIONAL PERFORMANCE INDICATOR
1. WORK WITH PARTNERS SUCH AS CULTURE SW TO MAKE THE SW'S HE MORE ACCESSIBLE AND RELEVANT TO PRESENT DAY LIVES	SWHEF, CSW, GOSW, EH, NT, HLF, LPA's, VS	LPAs, EH, HLF	SHARE EXAMPLES OF GOOD PRACTICE BY 2005 TO BE FOLLOWED BY MORE PROACTIVE WORK	WIDER UNDERSTANDING OF THE VALUE OF THE HE	EXAMPLES OF PARTNERSHIP WORKING TO INCREASE RELEVANCE OF HE TO PRESENT DAY LIVES
2. WORK WITH COMMUNITIES TO EXPLORE THE HISTORIC DIMENSION OF PEOPLE'S EVERYDAY LIVES	LPAs, EH, VS, NT, HLF, OTHER AGENCIES	LPAs, EH, HLF	SHARE EXAMPLES OF GOOD PRACTICE BY 2005 TO BE FOLLOWED BY MORE PROACTIVE WORK	GREATER UNDERSTANDING OF THE DIFFERENT PERCEPTIONS OF THE HE	EXAMPLES OF COMMUNITY LEVEL HE PROJECTS
3. REFLECT AN INCLUSIVE APPROACH WHICH ENCOURAGES PHYSICAL AND INTELLECTUAL ACCESS TO THE HE IRRESPECTIVE OF DISABILITY OR SOCIAL OR ECONOMIC BACKGROUND	LPAs, EH, HLF, VS, NT, OTHER AGENCIES, PS	LPAs, EH, HLF, VS, PS	SHARE EXAMPLES OF GOOD PRACTICE BY 2005 TO BE FOLLOWED BY MORE PROACTIVE WORK	DEVELOP A WIDER UNDERSTANDING AMONGST THOSE WORKING IN THE HE SECTOR OF THE NEEDS AND ASPIRATIONS OF CURRENTLY EXCLUDED OR DISADVANTAGED GROUPS	<p>EXAMPLES OF PROJECTS TO IMPROVE PHYSICAL AND INTELLECTUAL ACCESS TO HE</p> <p>THE NUMBER OF INITIATIVES WHICH ADDRESS THE HOLISTIC INTERPRETATION OF HISTORY TO EVERYONE, INCLUDING ADDRESSING THE GAP RELATING TO THE MULTI-CULTURAL HISTORY OF THE SOUTH WEST</p> <p>THE NUMBER OF INITIATIVES ENGAGING UNDERREPRESENTED AND SOCIALLY EXCLUDED GROUPS WITH THE HISTORIC ENVIRONMENT</p>



5.28

REGIONAL PRIORITY 9:

TACKLE THE LEGACY CREATED BY POOR MANAGEMENT AND MAINTENANCE OF THE HISTORIC ENVIRONMENT ACROSS THE SOUTH WEST. ENCOURAGE REGULAR INSPECTIONS AND REPAIRS, TOGETHER WITH THE POSITIVE RE-USE OF REDUNDANT HISTORIC BUILDINGS.

5.29

MANAGEMENT AND MAINTENANCE ARE A PARTICULAR CONCERN IN THE SOUTH WEST GIVEN THAT THE REGION HAS A QUARTER OF ALL ENGLISH LISTED BUILDINGS AND A HIGH PROPORTION OF REGISTERED PARKS AND GARDENS WHILST INCOME LEVELS ARE GENERALLY BELOW THE NATIONAL AVERAGE. WHILE 2% OF GRADE 1 AND GRADE II* LISTED BUILDINGS WITHIN THE REGION ARE CONSIDERED TO BE AT RISK (COMPARED WITH AN AVERAGE FOR ENGLAND AS A WHOLE OF 3.7%), IN 2002 THE AVERAGE NUMBER OF LISTED BUILDINGS OF ALL GRADES AT RISK WAS ALMOST TWICE THE NATIONAL AVERAGE.

5.30

IT MAKES GOOD ECONOMIC SENSE – AS WELL AS CONSERVATION SENSE - TO PLAN FOR SHORT TERM EXPENDITURE TO AVOID MAJOR CAPITAL OUTLAY, OR EVEN THE LOSS OF THE HISTORIC RESOURCE ITSELF, IN THE MEDIUM OR LONGER TERM. RESTORATION, CONVERSION OR NEW DESIGN SHOULD TAKE FULL ACCOUNT OF THE PRACTICAL AND FINANCIAL IMPLICATIONS OF PROPER MANAGEMENT.

5.31

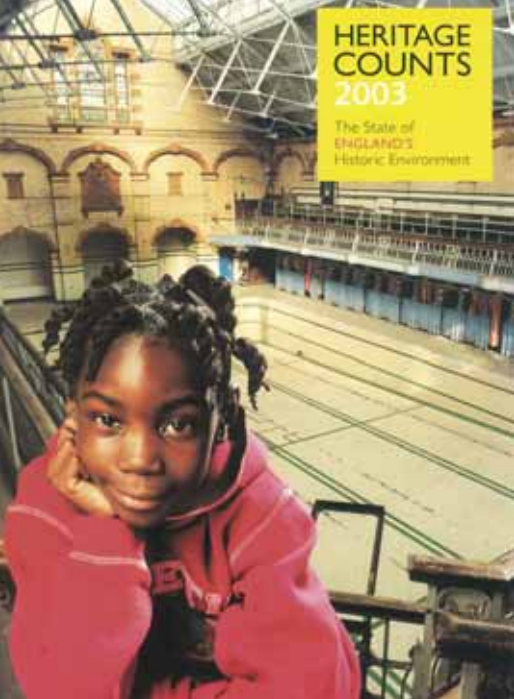
FOLLOWING ON FROM THE SAMPLE SURVEY OF SITES AND MONUMENTS DONE FOR THE MONUMENTS AT RISK (MAR) SURVEY IN THE 1990'S A METHODOLOGY HAS BEEN DEVELOPED TO ASSESS RISK FACTORS FOR ALL SCHEDULED ANCIENT MONUMENTS¹⁴. THIS WILL BE DONE IN THE SW OVER THE NEXT TWO YEARS AND A STRATEGY DEVELOPED FOR THE MANAGEMENT OF THOSE SCHEDULED ANCIENT MONUMENTS CONSIDERED MOST AT RISK. WORK IS CURRENTLY UNDERWAY ON DEVELOPING A METHODOLOGY FOR ASSESSING PARKS AND GARDENS AT RISK.



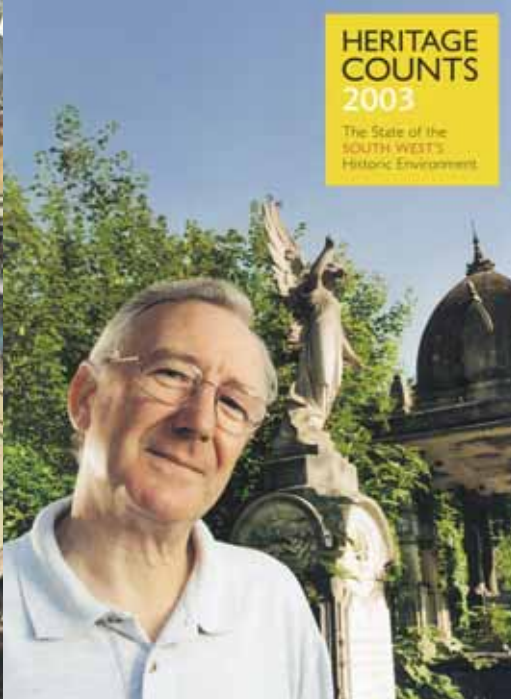
ST MARGARET'S LEPER HOSPITAL, TAUNTON

THESE GRADE II* LISTED ALMSHOUSES DATE FROM THE EARLY 16TH CENTURY, WERE REBUILT IN 1612, AND HAD BEEN EMPTY AND DECAYING FOR A NUMBER OF YEARS. THE SOMERSET BUILDING PRESERVATION TRUST INITIATED A PROJECT, NOW COMPLETED, TO CONVERT THEM TO SHELTERED HOUSING IN PARTNERSHIP WITH THE ARCHITECTURAL HERITAGE FUND, FALCON HOUSING, ENGLISH HERITAGE, THE HERITAGE LOTTERY FUND, THE HOUSING CORPORATION AND SOMERSET COUNTRY COUNCIL.

ACTION	PARTNERS – LEAD SHOWN FIRST	POSSIBLE RESOURCES	GOALS & TIMESCALE	OUTCOMES	DRAFT REGIONAL PERFORMANCE INDICATOR
1. USE THE BUILDINGS AT RISK REGISTER (BAR) AND AN ASSESSMENT OF PARKS AND GARDENS AT RISK TO ASSIST IN DETERMINING REGIONAL RESOURCE PRIORITIES	EH, LPAs	EH, LPAs	BAR LIST FOR GRADE I AND II* TO BE PRODUCED ANNUALLY BY EH. LPAs TO BE ENCOURAGED TO PRODUCE BAR LISTS FOR ALL BUILDING GRADES. ONGOING	ENHANCED UNDERSTANDING OF PROBLEM AREAS. IMPROVED ABILITY TO TARGET SCARCE RESOURCES. REDUCTION IN NUMBER OF PROBLEM BUILDINGS	REDUCTION IN NUMBER OF LISTED BUILDINGS AND REGISTERED PARKS AND GARDENS AT RISK
2. DEVELOP UNDERSTANDING OF MONUMENTS AT RISK AND SCHEDULED ANCIENT MONUMENTS AT RISK	EH, LPAs	EH	CARRY OUT SCHEDULED ANCIENT MONUMENTS AT RISK SURVEY FOR REGION BY END OF 2005	A LIST OF SCHEDULED ANCIENT MONUMENTS AT RISK WITH PRIORITIES FOR AMELIORATION AND MANAGEMENT	REDUCTION IN NUMBER OF MONUMENTS AND SCHEDULED ANCIENT MONUMENTS AT RISK
3. PROMOTE WAYS OF ENSURING REGULAR INSPECTIONS OF HISTORIC BUILDINGS AND SITES IN BOTH PUBLIC AND PRIVATE OWNERSHIP	SWHEF, EH, LAs, RDA, PROFESSIONAL AND TRADE/CRAFT BODIES, VS, PS	EH, LAs, PROFESSIONAL TRADE/CRAFT BODIES, VS, PS	CONSIDERATION OF HOW SCHEME MAY BE IMPLEMENTED. WILL DEPEND UPON NATIONAL ACTION. TIMESCALE NOT KNOWN	HISTORIC RESOURCE IN IMPROVED CONDITION	FREQUENCY OF INSPECTION
4. PROMOTE POLICIES TO SUPPORT THE POSITIVE AND APPROPRIATE RE-USE OF HISTORIC BUILDINGS	SWHEF, EH, HLF, LAs, RDA, VS, PS	LPAs, EH, HLF	CONSIDER DEVELOPMENT OF MODEL POLICIES BY END OF 2005	FEWER REDUNDANT BUILDINGS	EXAMPLES OF APPROPRIATE RE-USE OF HISTORIC BUILDINGS



HERITAGE
COUNTS
2003
The State of
ENGLAND'S
Historic Environment



HERITAGE
COUNTS
2003
The State of the
SOUTH WEST'S
Historic Environment

5:32

REGIONAL RECOMMENDATION 10:

DEVELOP A CO-ORDINATED AND PRIORITISED RESEARCH STRATEGY FOR THE SOUTH WEST TO FILL KEY GAPS IN OUR UNDERSTANDING OF THE HISTORIC ENVIRONMENT.

5:33

GOOD INFORMATION IS A PREREQUISITE FOR PROPER PLANNING AND MANAGEMENT OF THE HISTORIC ENVIRONMENT. PROPER MANAGEMENT NEEDS BASELINE INFORMATION ABOUT THE CHARACTER AND CONDITION OF THE HISTORIC ENVIRONMENT, MONITORING TO IDENTIFY KEY TRENDS AND CHANGES. KEY GAPS IN THE INFORMATION BASE ARE IDENTIFIED IN OTHER PARTS OF THIS CHAPTER BUT THE DEVELOPMENT BY ALL INTERESTED PARTIES OF A CO-ORDINATED RESEARCH STRATEGY FOR THE SOUTH WEST IS NECESSARY.

THE STATE OF THE HISTORIC ENVIRONMENT REPORT PUBLISHED BY ENGLISH HERITAGE ON BEHALF OF THE HISTORIC ENVIRONMENT SECTOR, THE ANNUAL STATE OF THE HISTORIC ENVIRONMENT REPORT ATTEMPTS TO QUANTIFY AND MONITOR THE CONDITION OF THE HISTORIC ENVIRONMENT, THE PRESSURES IT FACES AND ITS CONTRIBUTION TO ECONOMIC AND SOCIAL WELL BEING. LAUNCHED IN 2002 IN RESPONSE TO THE GOVERNMENT STATEMENT 'THE HISTORIC ENVIRONMENT: A FORCE FOR OUR FUTURE', THE NATIONAL REPORT IS ACCOMPANIED BY A SUITE OF NINE REGIONAL DOCUMENTS. THE 2003 REPORT ON THE SOUTH WEST CONTAINS A FORWARD PLAN WITH 21 REGIONAL PRIORITIES AND THE SOUTH WEST HISTORIC ENVIRONMENT FORUM WILL REPORT ON THE PROGRESS OF THIS PLAN ON AN ANNUAL BASIS. THE STATE OF THE HISTORIC ENVIRONMENT REPORT WILL BECOME A MORE POWERFUL TOOL IN FUTURE YEARS AS INDICATORS BASED ON KEY TRENDS AND CORE THEMES BECOME ESTABLISHED. THE DOCUMENTS CAN BE DOWNLOADED FROM WWW.HERITAGECOUNTS.ORG.UK

IMAGES: © ENGLISH HERITAGE

ACTION	PARTNERS – LEAD SHOWN FIRST	POSSIBLE RESOURCES	GOALS & TIMESCALE	OUTCOMES	DRAFT REGIONAL PERFORMANCE INDICATOR
1. DEVELOP A RESEARCH STRATEGY FOR THE HE IN THE SW (BUILDING ON ALGAO SW REGIONAL RESEARCH STRATEGY)	SWHEF, REGIONAL CENTRE OF EXCELLENCE, ALGAO, IHBC, EDUCATION SECTOR	EH, LPAs, ALGAO, IHBC	PRODUCTION OF AN ARCHAEOLOGICAL RESEARCH FRAMEWORK AND LINKED HE RESEARCH FRAMEWORK BY END OF 2004	AT STRATEGIC AND LOCAL LEVELS ENCOURAGE THE DEVELOPMENT OF MORE PRECISELY DRAWN LOCAL OR THEMATIC RESEARCH STRATEGIES	EXAMPLES OF RESEARCH TARGETED AT REGIONAL PRIORITIES
2. ENCOURAGE THE REGULAR PUBLICATION OF 'STATE OF THE HISTORIC ENVIRONMENT' REPORTS AT REGIONAL, COUNTY AND DISTRICT LEVELS. THIS SHOULD INFORM THE REGIONAL ECONOMIC STRATEGY AND POLICIES AT COUNTY AND DISTRICT LEVELS. IT WILL ALSO INFORM FUTURE VERSIONS OF THIS STRATEGY	EH, SWHEF, HLF, LPAs, GOSW, RDA (REGIONAL OBSERVATORY), RA	EH, LPAs, GOSW, RDA, RA	FIRST REGIONAL STATE OF THE HE IN 2003 FOLLOWING NATIONAL EH PILOT	A BETTER UNDERSTANDING OF THE HE RESOURCE AND GREATER CLARITY IN DECIDING ON REGIONAL PRIORITIES	NUMBER OF 'STATE OF THE HISTORIC ENVIRONMENT' REPORTS AT REGIONAL, COUNTY AND LOCAL LEVELS
3. DEVELOP A COMMON INFORMATION FRAMEWORK AND PROMOTE ACCESS FOR THOSE OUTSIDE THE HERITAGE PROFESSION	RDA REGIONAL CENTRE OF EXCELLENCE AND REGIONAL OBSERVATORY, SWHEF, EH, LPAs	RDA, EH, LPAs	PROGRESS IS LIKELY TO BE LINKED TO WORK ON REGIONAL OBSERVATORY AND REGIONAL CENTRE OF EXCELLENCE	SHARED BROAD GOALS ACROSS THE HE SECTOR	EXAMPLES OF PARTNERSHIP WORKING ACROSS AND BEYOND THE HE SECTOR
4. DEVELOP HERITAGE INDICATORS TO MEASURE CHANGE TO HE	EH, REGIONAL OBSERVATORY, LPAs, GOSW, NT	EH, REGIONAL OBSERVATORY, LPAs, GOSW	AGREED REALISTIC AND MEASURABLE INDICATORS BY END OF 2004.	A MORE ACCURATE PICTURE OF THE STATE OF THE HISTORIC ENVIRONMENT.	DEVELOPMENT OF MORE DETAILED REGIONAL, COUNTY AND LOCAL HE INDICATORS REFLECTING RESEARCH PRIORITIES AND EVOLVING KNOWLEDGE



THE ANTI-SLAVERY ARCH PROJECT, GLOUCESTERSHIRE

FUNDED THROUGH THE LOCAL HERITAGE INITIATIVE, THIS PROJECT HAS RESTORED, INTERPRETED AND PROMOTED THE ARCH AT PAGAN HILL, STROUD, A STRUCTURE THAT COMMEMORATES THE STRUGGLE AGAINST SLAVERY. THE LOCAL COMMUNITY, MADE UP OF SEVERAL GROUPS AND THE NEARBY ARCHWAY COMPREHENSIVE SCHOOL, NAMED AFTER THE ARCH, HAVE BEEN INVOLVED IN GATHERING INFORMATION, AND DESIGNING INTERPRETATIVE MATERIAL, INCLUDING A BRASS PLAQUE, LEAFLETS AND A WEBSITE.

PHOTOGRAPH: © GLOUCESTERSHIRE COUNTY COUNCIL

5:34 REGIONAL PRIORITY 11:

IMPROVE COMMUNICATION BETWEEN THE PUBLIC, PRIVATE AND VOLUNTARY INTERESTS ON HISTORIC ENVIRONMENT ISSUES IN THE SOUTH WEST .

5:35 THE SOUTH WEST REGION IS ALREADY VERY ACTIVE IN A WHOLE RANGE OF HISTORIC ENVIRONMENT INITIATIVES BUT GOOD PRACTICE DOES NOT ALWAYS GET SPREAD AS WIDELY AS IT MIGHT. COMMUNICATION AND INVOLVEMENT MUST BE EFFECTIVE AND MEANINGFUL. THE NEWLY ESTABLISHED SW HISTORIC ENVIRONMENT FORUM COULD PLAY A KEY ROLE IN FACILITATING THIS EXCHANGE OF INFORMATION. THIS ROLE NEEDS TO BE PARALLELED AT SUB-REGIONAL AND MORE LOCAL LEVELS.

ACTION	PARTNERS – LEAD SHOWN FIRST	POSSIBLE RESOURCES	GOALS & TIMESCALE	OUTCOMES	DRAFT REGIONAL PERFORMANCE INDICATOR
1. FOCUS ON IMPROVING LINKS BETWEEN PUBLIC, PRIVATE AND VOLUNTARY SEGMENTS OF THE SECTOR WHERE THEY ARE CURRENTLY NOT STRONG	SWHEF, EH, LPAs, PS, VS	EH, LPAs, PS, VS	SWHEF TO CONSIDER PROGRESS ANNUALLY	IMPROVED COMMUNICATION LEADING TO BETTER DISSEMINATION OF HE ISSUES	EXAMPLES OF NEW PARTNERSHIP WORKING BETWEEN PUBLIC, PRIVATE AND VOLUNTARY SECTORS
2. DEVELOP EXISTING AND ESTABLISH NEW PARTNERSHIPS WITH THE VOLUNTARY, CHARITABLE AND PUBLIC SEGMENTS OF SECTOR	VS, LPAs, EH, HLF, SWHEF	VS, LPAs, EH, SWHEF	SWHEF, EH TO CONSIDER PROGRESS ANNUALLY	A STRENGTHENED AND MORE EFFECTIVE SECTOR	EXAMPLES OF NEW PARTNERSHIP WORKING BETWEEN PUBLIC, PRIVATE AND VOLUNTARY SECTORS
3. RECOGNISE THE HE VARIATIONS THAT EXIST WITHIN THE REGION AND RESPOND TO THESE	ALL, PARTICULARLY ORGANISATIONS OPERATING AT A REGIONAL LEVEL	ALL, PARTICULARLY ORGANISATIONS OPERATING AT A REGIONAL LEVEL	ALL TO REVIEW PERIODICALLY	IMPROVED AWARENESS OF SUB-REGIONAL VARIATIONS	EXAMPLES OF SUBREGIONAL PRIORITIES AND RESPONSES
4. DEVELOP MEANINGFUL WAYS OF CONSULTING AND INVOLVING LOCAL COMMUNITIES IN DECISIONS ABOUT THE HE	SWHEF, EH, LPAs, PS, VS, NT	EH, LPAs, PS, VS	SWHEF TO CONSIDER PROGRESS ANNUALLY	GREATER PUBLIC UNDERSTANDING, APPRECIATION AND ACCESS TO THE HISTORIC ENVIRONMENT	NUMBER OF COMMUNITY BASED HE INITIATIVES



BRISTOL TOWNSCAPE HERITAGE INITIATIVE

THE INITIATIVE COVERS THREE AREAS OF HIGH ECONOMIC NEED IN THE NORTH EAST PART OF BRISTOL. BUILDING ON THE EARLIER STOKES CROFT CONSERVATION AREA PARTNERSHIP SCHEME WHICH INVESTED £600,000 OVER THREE YEARS, THE TOWNSCAPE HERITAGE INITIATIVE AIMS TO INVEST £1.5 MILLION BETWEEN 2002 AND 2004. THE JOINT PARTNERSHIP INVOLVING THE HERITAGE LOTTERY FUND AND BRISTOL CITY COUNCIL SEEKS TO ADDRESS BUILDING DISREPAIR WITH THE REGIONAL DEVELOPMENT AGENCY SUPPORTING IMPROVEMENTS TO THE PUBLIC REALM. ENGLISH HERITAGE IS PROVIDING EXPERT ADVICE AND PROJECT MONITORING FOR THE HERITAGE LOTTERY FUND ON THE DIRECTION OF THE INITIATIVE TO SECURE APPROPRIATE CONSERVATION-BASED REGENERATION.

THE TOWNSCAPE HERITAGE INITIATIVE FORMS PART OF A MUCH WIDER STRATEGY WHICH IS ATTEMPTING TO TACKLE ISSUES OF SOCIAL EXCLUSION, DEPRIVATION AND SECURITY THROUGH THE USE

OF OBJECTIVE 2 FUNDING AND THE SINGLE REGENERATION BUDGET. THE BUILT ENVIRONMENT OF THE AREA IS OF SIGNIFICANT HERITAGE MERIT, BUT ITS QUALITY IS UNDERVALUED AND AT RISK FROM LOW PROPERTY VALUES AND DERELICTION. THE PHOTOGRAPH SHOWS THE GRADE I LISTED ST PAULS CHURCH WHICH FORMS PART OF THE GEORGIAN PORTLAND SQUARE. IDENTIFIED ON THE ENGLISH HERITAGE 'BUILDINGS AT RISK REGISTER', THE CHURCHES CONSERVATION TRUST HAS SECURED A £2.5 MILLION GRANT AWARD FROM THE HERITAGE LOTTERY FUND TO UNDERTAKE URGENT WORKS WHICH INCLUDE REPAIRS TO ITS DECORATIVE PLASTER CEILINGS. BY TAKING AN INTEGRATED APPROACH TO THE REGENERATION OF THE AREA THESE VARIOUS INITIATIVES AIM TO RAISE ITS PROFILE AND SECURE SIGNIFICANT LONG-TERM BENEFITS FOR THE COMMUNITY.

PHOTOGRAPH: © ENGLISH HERITAGE

5.36 **REGIONAL PRIORITY 12:**
INCREASE THE HISTORIC ENVIRONMENT'S CONTRIBUTION TO THE ECONOMIC WELL BEING OF THE REGION BY ENCOURAGING AND SUPPORTING ITS SUSTAINABLE USE AND SENSITIVE REFLECTION IN NEW DEVELOPMENT.

5.37 THERE IS INCREASING RECOGNITION OF THE ECONOMIC IMPORTANCE OF THE HISTORIC ENVIRONMENT IN THE SOUTH WEST. IT PLAYS A MAJOR PART IN THE REGION'S POPULARITY FOR TOURISM AND RECREATION, A SECTOR THAT GENERATES SOME £5 BILLION ANNUALLY AND EMPLOYS 10% OF THE REGION'S WORKFORCE. RECENT DECADES HAVE SEEN A BROADENING OF THE VISITOR MARKET WITH 'HERITAGE' SITES INCLUDING HISTORIC PARKS AND GARDENS, ARCHAEOLOGICAL MONUMENTS, RELIGIOUS SITES AND FORMER INDUSTRIAL SITES AS IMPORTANT AS THE SEASIDE TOWNS WHICH ONCE DOMINATED THE LIST OF VISITOR ATTRACTIONS. AT THE SAME TIME THERE HAVE BEEN A NUMBER OF FLAGSHIP REGENERATION

PROJECTS SUCH AS THE REDEVELOPMENT OF BRISTOL HARBOURSIDE WHICH HAVE REFLECTED THE LOCAL HERITAGE AND HISTORY. THERE IS WIDER APPRECIATION OF THE HISTORIC ENVIRONMENT AS BEING SOMEWHERE WE WANT TO LIVE, WORK AND RELAX. THE HISTORIC ENVIRONMENT OF REGENCY TOWNS OF BATH AND CHELTENHAM, THE STONEBUILT VILLAGES OF THE COTSWOLDS AND THE THATCHED VILLAGES OF THE DEVON REDLANDS UNDERPIN THEIR CONTINUED POPULARITY.

5.38 THESE EXAMPLES PROVIDE VALUABLE EVIDENCE OF THE IMPORTANCE OF THE HISTORIC ENVIRONMENT BUT ARE PERHAPS THE TIP OF AN ECONOMIC ICEBERG. RATHER THAN SEEING THE HISTORIC ENVIRONMENT AS A CONSTRAINT TO ECONOMIC PROSPERITY, THERE IS AN OPPORTUNITY TO TURN CONVENTIONAL THINKING ON ITS HEAD AND TO SEE IT AS ONE OF THE KEY DRIVERS FOR FUTURE ECONOMIC DEVELOPMENT. BY RECOGNISING THE VALUE AND POTENTIAL OF THE HISTORIC ENVIRONMENT THERE IS SCOPE TO PROMOTE SOCIAL AND ECONOMIC REGENERATION WHICH SIMULTANEOUSLY RESULTS IN GREATER UNDERSTANDING, APPRECIATION AND CONSERVATION OF THE HISTORIC RESOURCE.

ACTION	PARTNERS – LEAD SHOWN FIRST	POSSIBLE RESOURCES	GOALS & TIMESCALE	OUTCOMES	DRAFT REGIONAL PERFORMANCE INDICATOR
1. INCREASE UNDERSTANDING OF THE LINK BETWEEN THE HE AND ECONOMIC ACTIVITY, IDENTIFYING EXAMPLES OF BEST PRACTICE. THIS SHOULD COVER SUSTAINABLE TOURISM, REGENERATION AND DEVELOPMENT SECTORS	GOSW (obj 1&2), LPAs, RDA, EH, HLF, ALGAO, RTPI, RIBA, PS, TOURISM SECTOR, VS, NT	GOSW, LPAs, RDA, EH, PS SHOULD REQUIRE ONLY LIMITED RESOURCES	RESEARCH AND SHARING OF BEST PRACTICE	GREATER EMPHASIS ON REFLECTING THE HE IN DEVELOPMENT AND REGENERATION PROPOSALS, THEREBY BRINGING ECONOMIC, SOCIAL AND CONSERVATION BENEFITS	IDENTIFICATION AND REFLECTION OF HE AS KEY ECONOMIC DRIVER IN RELEVANT REGIONAL AND MORE LOCAL REGENERATION STRATEGIES AND INITIATIVES
2. SPREAD EXPERIENCE OF HE SUCCESSES IN REGENERATION STRATEGIES	GOSW (obj 1&2), LPAs, RDA, EH, HLF, ALGAO, RTPI, RIBA, PS	GOSW, LPAs, RDA, EH, PS SHOULD REQUIRE ONLY LIMITED RESOURCES	CIRCULATE INFORMATION ON BEST PRACTICE. POSSIBLE SEMINAR/S. ONGOING	GREATER EMPHASIS ON REFLECTING THE HE IN DEVELOPMENT AND REGENERATION PROPOSALS, THEREBY BRINGING ECONOMIC, SOCIAL AND CONSERVATION BENEFITS	NUMBER OF EXAMPLES OF GOOD PRACTICE IN INCLUDING THE HE IN REGENERATION STRATEGIES
3. ENCOURAGE REGENERATION STRATEGIES, DEVELOPMENT PLANS, AND DEVELOPMENT CONTROL DECISIONS TO REFLECT THE POSITIVE ECONOMIC POTENTIAL OF THE HISTORIC ENVIRONMENT	LPAs, GOSW, EH, HLF	LPAs, GOSW, EH ONGOING, SHOULD NOT INVOLVE SIGNIFICANT ADDITIONAL RESOURCES	ALL PLANS TO CONTAIN POSITIVE POLICIES ENCOURAGING THE SUSTAINABLE REALISATION OF THE HE'S ECONOMIC POTENTIAL	GREATER EMPHASIS ON REFLECTING THE HE IN DEVELOPMENT AND REGENERATION PROPOSALS, THEREBY BRINGING ECONOMIC, SOCIAL AND CONSERVATION BENEFITS	NUMBER OF EXAMPLES OF GOOD PRACTICE IN INCLUDING THE HE IN REGENERATION STRATEGIES



AVEBURY

AVEBURY AND STONEHENGE WERE INSCRIBED ON THE WORLD HERITAGE LIST IN 1986 FOR THEIR OUTSTANDING PREHISTORIC MONUMENTS. THE WORLD HERITAGE SITE COVERS 2,600 HECTARES OWNED BY ENGLISH HERITAGE, THE NATIONAL TRUST, MINISTRY OF DEFENCE, FARMERS AND HOUSEHOLDERS. A SURVEY OF 650 ARCHAEOLOGICAL SITES IN THE WORLD HERITAGE SITE WAS CARRIED OUT IN 2002 TO ASSESS THEIR CONDITION AND DEFRA GRANTS ARE NOW BEING USED TO ENCOURAGE FARMERS TO CONVERT FIELDS TO PASTURE IN ARCHAEOLOGICALLY SENSITIVE AREAS.

PHOTOGRAPH: © ENGLISH HERITAGE

MONITORING AND REVIEW

- 5.39 THIS STRATEGY REPRESENTS THE START RATHER THAN THE PRODUCT OF A PROCESS. IT HAS BEEN PREPARED ON A RELATIVELY SHORT TIMETABLE AND IS BASED ON AN INCOMPLETE PICTURE OF THE HISTORIC ENVIRONMENT OF THE SOUTH WEST.
- 5.40 THIS DOCUMENT DOES NOT IDENTIFY ANY INDICATORS AGAINST WHICH PROGRESS CAN BE MEASURED. THE REASON FOR THIS IS THAT WORK SPONSORED BY ENGLISH HERITAGE IS UNDERWAY NATIONALLY TO IDENTIFY AND BEGIN TO MEASURE CHANGES IN THE HISTORIC ENVIRONMENT AND IT IS THEREFORE PREMATURE FOR THE SW TO IDENTIFY REGIONAL INDICATORS.
- 5.41 IT IS INTENDED THAT THE PRESENT DOCUMENT WILL BE SUBJECT TO FORMAL REVIEW AFTER THREE YEARS. THIS REVIEW WILL PROVIDE THE OPPORTUNITY TO INCLUDE ADDITIONAL INFORMATION, ASSESS THE EXTENT TO WHICH THE OBJECTIVES OF THE STRATEGY HAVE BEEN ACHIEVED AND RECONSIDER THE PRIORITIES FOR FUTURE MANAGEMENT OF SOUTH WEST'S UNIQUE AND RICH HISTORIC ENVIRONMENT.
- 5.42 IT IS SUGGESTED THAT THE SW HISTORIC ENVIRONMENT FORUM CONSIDER PROGRESS ON THE DOCUMENT ON AN ANNUAL BASIS. THIS WILL ALLOW EMERGING PROBLEMS TO BE IDENTIFIED AND ACTION TAKEN AT AN EARLY STAGE.

APPENDIX :

ACRONYMS USED IN TEXT

ALGAO	ASSOC OF LOCAL GOVERNMENT ARCHAEOLOGICAL OFFICERS
CA	COUNTRYSIDE AGENCY
CABE	COMMISSION FOR ARCHITECTURE & BUILT ENVIRONMENT
CLA	COUNTRY LAND AND BUSINESS ASSOCIATION
CSW	CULTURE SOUTH WEST
DCMS	DEPARTMENT FOR CULTURE, MEDIA AND SPORT
DEFRA	DEPARTMENT FOR THE ENVIRONMENT, FOOD AND RURAL AFFAIRS
EA	ENVIRONMENT AGENCY
EH	ENGLISH HERITAGE
EN	ENGLISH NATURE
ES	EDUCATION SECTOR
FC	FORESTRY COMMISSION
FE	FURTHER EDUCATION SECTOR
GOSW	GOVERNMENT OFFICE FOR THE SW
HLF	HERITAGE LOTTERY FUND
LEA	LOCAL EDUCATION AUTHORITY
LPAs	LOCAL PLANNING AUTHORITIES
LSC	LEARNING AND SKILLS COUNCIL
IHBC	INSTITUTE OF HISTORIC BUILDING CONSERVATION
NFU	NATIONAL FARMERS UNION
NT	NATIONAL TRUST
NPs	NATIONAL PARKS
PS	PRIVATE SECTOR
RA	REGIONAL ASSEMBLY
RDA	REGIONAL DEVELOPMENT AGENCY
RIBA	ROYAL INSTITUTION OF BRITISH ARCHITECTS
RICS	ROYAL INSTITUTE OF CHARTERED SURVEYORS
RPG	REGIONAL PLANNING GUIDANCE
RTPI	ROYAL TOWN PLANNING INSTITUTE
SPG	SUPPLEMENTARY PLANNING GUIDANCE
SSW	SUSTAINABILITY SW
SWAFET	SOUTH WEST ASSOC FOR EDUCATION & TRAINING
SWHEF	SOUTH WEST HISTORIC ENVIRONMENT FORUM
VS	VOLUNTARY SECTOR

REFERENCES

- 1 THE HISTORIC ENVIRONMENT; A FORCE FOR OUR FUTURE, DEPARTMENT FOR CULTURE, MEDIA AND SPORT (2001)
- 2 REGIONAL ECONOMIC STRATEGY FOR THE SOUTH WEST OF ENGLAND 2003 – 2012, SOUTH WEST REGIONAL DEVELOPMENT AGENCY (2003)
- 3 VALUING OUR ENVIRONMENT, NATIONAL TRUST (1999)
- 4 HERITAGE COUNTS; THE STATE OF ENGLAND'S HISTORIC ENVIRONMENT, ENGLISH HERITAGE (2003)
- 5 POWER OF PLACE; THE FUTURE OF THE HISTORIC ENVIRONMENT, ENGLISH HERITAGE (2000)
- 6 HERITAGE DIVIDEND 2002; MEASURING THE RESULTS OF HERITAGE REGENERATION 1999-2002; ENGLISH HERITAGE (2002)
- 7 THE INVESTMENT PERFORMANCE OF LISTED BUILDINGS, ROYAL INSTITUTION OF CHARTERED SURVEYORS (2002)
- 8 THE HISTORIC ENVIRONMENT; A FORCE FOR OUR FUTURE, DEPARTMENT FOR CULTURE, MEDIA AND SPORT (2001)
- 9 A SUSTAINABLE FUTURE FOR THE SOUTH WEST, SUSTAINABILITY SOUTH WEST (2000); FUTURE FOUNDATIONS; A SUSTAINABLE CONSTRUCTION CHARTER, SUSTAINABILITY SOUTH WEST (2001); REGIONAL PLANNING GUIDANCE (RPG10), SOUTH WEST REGIONAL PLANNING CONFERENCE (2000)
- 10 REGIONAL ECONOMIC STRATEGY FOR THE SOUTH WEST OF ENGLAND 2003 – 2012, SOUTH WEST REGIONAL DEVELOPMENT AGENCY 2003
- 11 SOUTH WEST REGIONAL PLANNING GUIDANCE (RPG10), SOUTH WEST REGIONAL PLANNING CONFERENCE (2000)
- 12 ENGLAND RURAL DEVELOPMENT PROGRAMME; VOL. 12 SOUTH WEST REGION, DEPARTMENT FOR THE ENVIRONMENT, FOOD AND RURAL AFFAIRS (2002)
- 13 BUILDING IN CONTEXT; NEW DEVELOPMENT IN HISTORIC AREAS, ENGLISH HERITAGE AND THE COMMISSION FOR ARCHITECTURE AND THE BUILT ENVIRONMENT (2001)
- 14 THE MONUMENTS AT RISK SURVEY OF ENGLAND, BOURNEMOUTH UNIVERSITY AND ENGLISH HERITAGE (1998)

THIS REPORT HAS BEEN PRODUCED BY
SOUTH WEST HISTORIC ENVIRONMENT FORUM

ENGLISH HERITAGE
DEPARTMENT FOR CULTURE, MEDIA AND SPORT
ASSOCIATION OF BUILDING PRESERVATION TRUSTS
ASSOCIATION OF LOCAL GOVERNMENT ARCHAEOLOGICAL OFFICERS
COUNTY, LAND AND BUSINESS ASSOCIATION
COMMISSION FOR ARCHITECTURE AND THE BUILT ENVIRONMENT
HERITAGE LOTTERY FUND
HISTORIC HOUSES ASSOCIATION
INSTITUTE OF HISTORIC BUILDING CONSERVATION
NATIONAL TRUST
ROYAL INSTITUTE OF BRITISH ARCHITECTS
UNIVERSITY OF THE WEST OF ENGLAND

PUBLISHED JULY 2004

COPYRIGHT © ENGLISH HERITAGE 2004
TEXT PREPARED BY SOUTH WEST REGIONAL HISTORIC ENVIRONMENT FORUM
DESIGNED BY LAND USE CONSULTANTS
PRINTED BY SCANAGRAPHS

PRODUCT CODE 50933

ALL IMAGES, UNLESS OTHERWISE SPECIFIED, ARE © ENGLISH HERITAGE OR © CROWN
COPYRIGHT. NMR. EVERY EFFORT HAS BEEN MADE TO TRACE COPYRIGHT HOLDERS AND
WE APOLOGISE IN ADVANCE FOR ANY UNINTENTIONAL OMISSIONS, WHICH WE WOULD BE
PLEASED TO CORRECT IN ANY SUBSEQUENT EDITION OF THIS PUBLICATION.

FOR FURTHER INFORMATION (AND COPIES OF THIS LEAFLET, QUOTE 50933), PLEASE
CONTACT:

ENGLISH HERITAGE
CUSTOMER SERVICES DEPARTMENT
PO Box 569
SWINDON SN2 2YP
TELEPHONE: 0870 333 1181
FAX: 01793 414926
EMAIL: CUSTOMERS@ENGLISH-HERITAGE.ORG.UK



ENGLISH HERITAGE



ENGLISH HERITAGE

