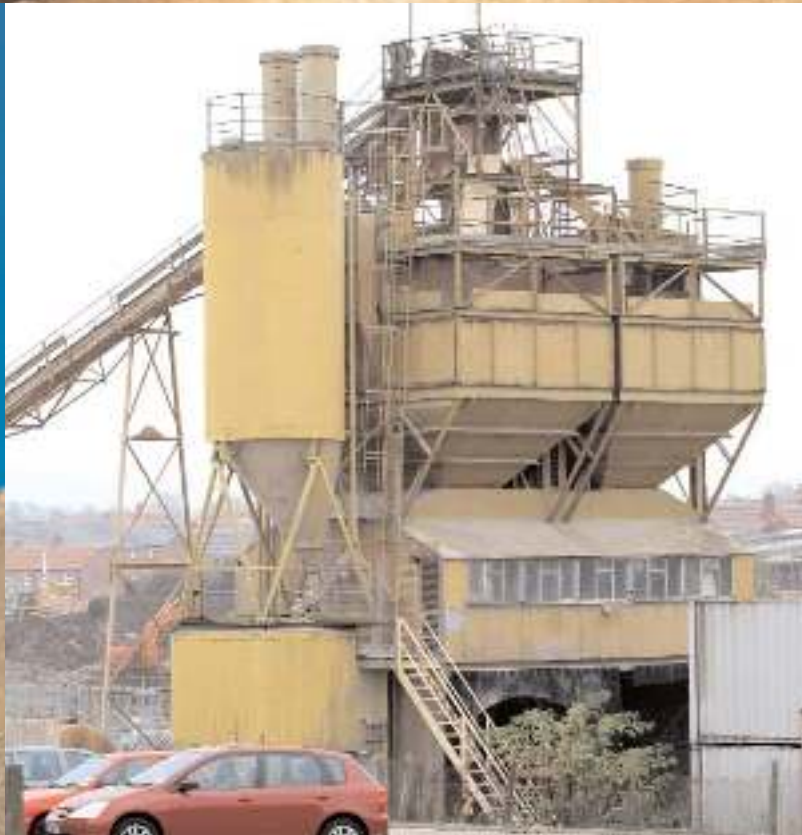




AGGREGATES MONITORING REPORT 2004



Aggregates Monitoring Report 2004.

Published July 2006 by the South East England
Regional Assembly.

South East England Regional Assembly
Berkeley House, Cross Lanes,
Guildford, GU1 1UN
T: 01483 555200
F: 01483 555250
E: secretariat@southeast-ra.gov.uk

Produced by the South East England Regional
Aggregates Working Party (SEERAWP).

For further details about the contents of this
document please contact:

SEERAWP Secretary
22 Sittingbourne Road
Maidstone
Kent
ME14 5LW
E: chriswaiteplanning@blueyonder.co.uk

Front cover photography:
The Quarry Products Association and
Chris Clopet - www.thedigitallighthouse.com

CONTENTS

EXECUTIVE SUMMARY

1	The South East	5
2	Scope of this Report	5
3	Aggregate Guidelines and Regional Minerals Strategy	5
4	Quarries	6
	Land-won Sand and Gravel	6
	Local Crushed Rock	7
5	Wharves	7
	Landings of Marine-dredged Sand and Gravel	7
	Landings of Sea-borne Crushed Rock	7
6	Rail Depots	8
	Crushed Rock and Sand and Gravel	8
7	Secondary and Recycled Materials	8
	Construction and Demolition Waste	8
	Secondary Materials	8
8	Environment	8
9	Local Development Schemes and Minerals Development Plan Documents	9

TABLES

1	Sand and Gravel – Sales, Permissions and Reserves 2004	10
2	Sand and Gravel Sales 2003 and 2004	11
3	Sand and Gravel Sales 1994 - 2004	11
4	Sand and Gravel – Comparison between Sales and Permissions 1995 - 2004	12
5	Sand and Gravel Landbanks at end 2004	12
6	Crushed Rock – Sales, Permissions and Reserves 2003 and 2004	13
7	Crushed Rock – Sales, Permissions and Reserves 1995 - 2004	13
8	Landings of Marine-dredged Sand and Gravel 1995-2004	14
9	Marine Imports of Sea-borne Crushed Rock 1995 - 2004	14

FIGURES

1	Administrative Areas in the South East	15
2	Sales of Land-won Sand and Gravel 1994 - 2004	15
3	Sales of Sand and Gravel 2002, 2003 and 2004	16
4	Sand and Gravel Reserves at end of 2004	16
5	Sales of Local Crushed Rock 1995 - 2004	17
6	Landings of Marine-dredged Sand and Gravel 1995 - 2004	17

APPENDICES

A.	Aggregate Applications, Permissions and Refusals in 2004	18
B.	Key Milestones for Minerals Development Plan Documents	20
C.	Summary of Publications on Aggregates by SEERAWP available from the Regional Assembly	22
D.	Active and Inactive Aggregate Sites, Rail Depots, Wharves and Other Sites Producing Recycled Aggregate	23

AGGREGATES MONITORING REPORT 2004

EXECUTIVE SUMMARY

This Aggregates Monitoring Report (AM2004) regional report for the South East has been prepared from returns made to mineral planning authorities (MPAs) by operators of quarries, wharves and rail depots. It follows the same pattern as previous years, enabling trend comparisons. Next year, AM2005 will be a national survey, as for AM2001, and will enable comparisons of additional information at regional level, including on the destination of materials, transport mode used, and production from and reserves within environmental designations.

Land-won Sand and Gravel

- Sand and gravel sales have fallen to 10.4 million tonnes (mt), the lowest figure since annual reports began, continuing a trend over the last 10 years
- Despite a 20% reduction in the regional apportionment in the 2003 revised guidelines, sales continue well below the revised apportionment figure of 13.25 million tonnes per annum (mtpa). At 10.4mt, sales in 2004 were 21% below this figure
- Reserves have declined by 50mt in the last eight years because replenishment of reserves is at only 50% of annual sales. The situation is getting worse with the volume of aggregate in planning permissions in 2003 and 2004 at 3.4mt and 2.9mt only 30% of sales
- The regional landbank is 6.1 years, compared with MPG6 requirement of 'at least seven years'. However, six of the 11 authorities have a landbank in excess of seven years.

Local Crushed Rock

- At 1.4mt, sales in 2004 are the average for the last three years. This is well below the 2.2mtpa regional apportionment
- With over 56mt of reserves, there are more than 25 years for working, even at the regional apportionment level.

Landings of Marine-dredged Sand and Gravel

- The Crown Estate figure of 5.7mt shows a 900,000 tonne fall in the volume of landings compared with the figure for 2003. However, the AM2004 survey recorded 6.6mt, ie landings at the same level as for 2003
- The contribution of marine-dredged aggregate is maintained at over one third of the South East primary aggregate supply.

Landings of Sea-borne Crushed Rock

- Landings of crushed rock at 3.2mt are some 600,000 tonnes less than last year
- Over 75% of crushed rock continues to be landed at wharves in Kent and Medway Rail Aggregate Depots

Rail Aggregate Depots

- Sales from 18 active depots were the same as for last year, over 4mt in total, of which over 90%, some 3.7mt, was crushed rock imports.

Secondary and Recycled Materials

- Recycling of some 2.5mt of construction and demolition (C&D) waste for aggregate use was undertaken at 125 sites, including in 39 quarries, one wharf and six rail depots.

AGGREGATES MONITORING REPORT 2004

1. The South East

1.1 Data from Annual Monitoring (AM) surveys in the wider South East has been collected annually on a systematic basis from 1989. The responsibility for aggregates monitoring is now undertaken by the South East England Regional Assembly (SEERA) on behalf of the Department for Communities and Local Government. From 1999, survey data for the South East reflects the Regional Assembly's area.

1.2 As with earlier AM surveys, this AM 2004 report is a monitor at the regional scale, and the text reflects this. Data in the tables is presented for eight geographical counties¹ and three Unitary Authorities² (see Figure 1).

1.3 AM2004 is the sixth Annual Monitoring report to be prepared and published for South East England, starting with AM99. However, in order to provide data on longer term trends, AM96, AM97 and AM98 reports were produced for the revised regional area by extracting data from the 'wider South East' AM surveys for those years. All these reports are available from the South East England Regional Assembly (see Appendix C).

2. Scope of this Report

2.1 Data on primary aggregates sales, permissions and reserves for AM2004 has been provided by operators via the mineral planning authorities (MPAs) who collated individual site returns. The coastal MPAs have also obtained information on landings of marine-dredged sand and gravel and imports of crushed rock and other marine-imported materials from the port authorities and wharf operators. Data on marine-dredged sand and gravel landed in the region has also been provided separately by the Crown Estate.

2.2 For the third year, starting with AM2002, additional data has been collected on quarries, rail depots, wharves and sites producing recycled aggregate, enabling a region-wide inventory of active and inactive sites to be drawn up (see Appendix D). This AM2004 report draws from such additional data in the text and tables that follow.

2.3 The MPAs have also been asked to provide details of applications, permissions and refusals in 2004. A summary of the data for each MPA is set out in Appendix A.

2.4 The AM2004 survey was delayed for six months until the Quarry Products Association established a procedure in October 2005 that satisfied its concerns about confidentiality. Some figures in the tables in this report therefore remain confidential, and this may require other figures in the tables to be unidentifiable in order to maintain confidentiality. Difficulties were also experienced in obtaining returns from some operating companies. In these cases estimates have been used. Where such estimates were in excess of 10%, attention has been drawn to them in a footnote to Table 1.

3. Aggregate Guidelines and Regional Minerals Strategy

3.1 In June 2003 ODPM published the long awaited revision to the National and Regional Aggregate Guidelines³. The Guidelines set a regional figure for land-won sand and gravel of 13.25 million tonnes per annum (mtpa), and a figure for crushed rock of 2.2mtpa. The regional planning bodies, including the South East England Regional Assembly, were asked to agree the regional figures and to carry out a sub-regional apportionment of these figures within six months of the publication of the Guidelines.

¹ Berkshire (including Bracknell Forest, Reading, Slough, West Berkshire, Windsor & Maidenhead, and Wokingham), Buckinghamshire, East Sussex (including Brighton and Hove), Hampshire (including Portsmouth and Southampton), Kent, Oxfordshire, Surrey, and West Sussex

² Isle of Wight, Medway, and Milton Keynes

³ National and Regional Guidelines for Aggregates Provision in England, 2001-2016 - published by ODPM, June 2003

3.2 The Regional Assembly published its Consultation Draft of the Regional Minerals Strategy in September 2003⁴, and this was followed by the Proposed Alterations in March 2004⁵. These reports included a sub-regional apportionment of land-won sand and gravel and crushed rock. The crushed rock apportionment was based on the Guidelines figure, but the sand and gravel apportionment was for a lower figure.

3.3 An Examination in Public into the Proposed Alterations, was held in October 2004, and the Panel report produced at the end of the year. The Panel recommended a land-won sand and gravel apportionment at the full 13.25mtpa. In August 2005 the Government Office for the South East published Proposed Changes to Regional Planning Guidance (RPG9)⁶, which confirmed these apportionments. The Regional Assembly has accepted these figures. Those figures are now included in the final report, RPG9, Revised Chapters 10 (part) Waste and 11 Minerals published in July 2006⁷.

4 Quarries

4.1 In 2004 there were 124 sites producing aggregates, of which only 13 were crushed rock quarries, the remainder being worked for sand and gravel. There were 35 inactive sand and gravel sites and two inactive crushed rock sites which contain reserves and either could be re-opened or have not yet started production. The list of sites is set out in Appendix D.

Land-won Sand and Gravel

4.2 Sales, permissions and reserves data for sand and gravel are shown in Table 1 by county. Sales are shown to be 10.4 million tonnes (mt) in 2004. Total reserves at the end of the year, at nearly 81mt, are some 16mt less than that at the beginning of the

year. Nearly half of this is due to a 7mt deficit in reserve replenishment through new permissions.

4.3 Table 2 compares sales of land-won sand and gravel by county for 2003 and 2004. This shows that sales, at 10.4mt, show a small decline from the 10.6mt sales in 2003. This is due to a fall in sales of sharp sands and gravels. Sharp sands and gravels account for 75% of sales, some 7.8mt. This figure includes some 700,000 tonnes sold for constructional fill. A further 800,000 tonnes of sand and gravel was sold for non aggregate uses.

4.4 The short and medium term trends in sand and gravel sales in the region are shown in Tables 3 and 4, and Figures 2 and 3. Over the last ten years sales have fallen from a peak of 15.5mt in 1994 to 10.4mt this year, a 32.8% decline.

4.5 Table 4 shows that sand and gravel sales in 2004 continue the pattern of the last decade of being consistently below the South East regional figure. This applies in 2004 despite the 20% reduction in the regional apportionment proposed in the revised Guidelines published by ODPM in June 2003. At 10.4mt, sales in 2004 were a further 21% below the revised regional apportionment of 13.25mtpa.

4.6 Table 4 also compares sales and planning permissions for sand and gravel in the region for the last ten years. The Table shows that over the ten years, sales are double the level at which reserves are being replenished through planning permissions. The situation is getting worse with the volume in planning permissions in 2003 and 2004 at 3.4mt and 2.9mt, only 30% of sales. In total there is a deficit in reserves of over 50mt in the last eight years.

⁴ Regional Minerals Strategy: Consultation Draft - published by the Regional Assembly, September 2003.

⁵ Proposed Alterations to Regional Planning Guidance, South East – Regional Minerals Strategy, published by the Regional Assembly, March 2004

⁶ Proposed Changes to Regional Planning Guidance in the South East (RPG9) – Waste and Minerals, published by GOSE, August 2005.

⁷ Revised Chapters 10(part) Waste, & 11 Minerals of Regional Planning Guidance for the South East (RPG9), published by GOSE July 2006

4.7 The reserves of sand and gravel in the region at the end of 2004 are nearly 81mt, and are shown by county/unitary authority in Table 5. The regional landbank at that date, based on a regional apportionment of 13.25mtpa, was 6.1 years. The MPG6 requirement is for a regional landbank of at least seven years. Six of the MPAs have a landbank of more than seven years, but the region as a whole does not meet this requirement. In addition there are estimated to be over 14mt of reserves suitable for non aggregate uses.

Local Crushed Rock

4.8 In the revised Guidelines for 2001-2016, sales of crushed rock from local sources are proposed at 2.2mtpa, and this figure is incorporated into the Proposed Alterations to the Regional Minerals Strategy. This figure was exceeded in 2001, with sales from local sources at 2.4mt. But in 2004 sales were some 1.4mt, the average for the last three years 2002-2004 (see Table 6 and Figure 5). Just over 50% of the local crushed rock was sold for roadstone, railway ballast, concrete aggregate, armourstone or other screened and graded aggregate, the remainder for constructional fill. Only some 110,000 tonnes was sold for non-aggregate uses.

4.9 The reserves of local crushed rock stood at over 56mt at the end of 2004, which provides a landbank of over 25 years at 2.2mtpa (see Table 7).

4.10 Sales and reserves of chalk are not included in the tables in order to maintain comparison with earlier years. Chalk is not normally regarded as an aggregate material, but is used in some circumstances for construction fill in place of aggregate.

5 Wharves

5.1 There were 37 wharves in the region handling aggregates in 2004. Marine dredged sand and gravel was handled at 24 wharves, 19 handled crushed rock, and both aggregates were landed at six wharves. Eight wharves handled no aggregates in 2004, but were still capable of

being operational, or had not yet become operational. Two wharves closed in 2004, but two other wharves were opened.

Landings of Marine-dredged Sand and Gravel

5.2 Each year, the Crown Estate publishes data on landings of marine-dredged sand and gravel. Figures for the South East are given in Table 8. The Crown Estate figures, show landings of under 5.7mt of marine-dredged sand and gravel in 2004. This is a fall of some 900,000 tonnes from landings in 2002 and 2003 (see Figure 6).

5.3 However, data was also supplied on landings of marine-dredged sand and gravel to the MPAs from the operators at the wharves in the region. As for previous years, the 2004 returns to the MPAs showed a larger total than the Crown Estate figures. The 2004 returns to MPAs recorded 6.6mt of marine-dredged sand and gravel landed at wharves in the South East, a figure showing no fall in landings from comparable figures in 2003. All of the landed material was sold for construction as sharp sand and gravel. A further 230,000 tonnes was held in stockpiles at wharves at the end of 2004.

5.4 The origin of the marine-dredged sand and gravel landed in the South East is consistently from off the English east and south coasts ie from the North Sea and the English Channel. Very little land-won sand and gravel was handled at the wharves, totalling some 63,000 tonnes.

Landings of Sea-borne Crushed Rock

5.5 Data on landings of crushed rock by sea has been recorded either from port authorities or from aggregate operators. Table 9 shows that crushed rock imports for 2004 were some 3.2mt. This was some 600,000 tonnes less than for 2003. Over 80% of the crushed rock was landed at wharves in Kent and Medway.

5.6 The origins of the sea-borne imports of crushed rock to the South East are the rest of the British Isles - Scotland, Wales and Ireland - together with some from the

North West and South West regions; and from five mainland European countries - France, Norway, Spain, Greece and Turkey; plus some from China. Over 80% of the material was sold for roadstone, railway ballast, concrete aggregate, armourstone and other screened and graded aggregate, with some 560,000 tonnes sold for constructional fill. Some 63,000 tonnes was held in stockpiles at the wharves.

6 Rail Depots

Crushed Rock and Sand and Gravel

- 6.1 Seventeen of the 18 active rail depots import crushed rock. This was in much greater volumes than for sand and gravel. Some 3.7mt of crushed rock was sold from rail depots in the region in 2004, the same level as for 2003. Some 72% of sales, 2.7mt, were for roadstone, railway ballast, concrete aggregate, armourstone and other screened and graded aggregate, the remainder for construction fill. Some 73,000 tonnes was held in stockpiles at the wharves.
- 6.2 Sand and gravel was handled at five of the rail depots. In 2004 sales amounted to over 450,000 tonnes, almost all of which was sharp sand and gravel. Stockpiles at the depots were negligible.
- 6.3 There are four inactive rail depots, three have been operational and are capable of being re-opened, and one is a permission that has not yet been implemented. The full list of active and inactive depots is set out in Appendix D.

7 Secondary and Recycled Materials

- 7.1 The 2004 returns record 39 quarries and six wharves at which recycling was taking place in the region – see Appendix D. Construction and demolition waste (C&DW) was being recycled at all 39 quarries. Three of the wharves were recycling both C&DW and industrial and mineral waste, one just C&DW, and two just industrial and mineral waste.
- 7.2 In addition, there were eight further inactive sites at quarries. Six of these were

where recycling had taken place in the past and could be re-activated, and two sites at which planning permissions have been issued, but not implemented. Two sites were closed in 2004, but three new permissions and one site extension were issued for C&DW recycling, and one for industrial and mineral waste.

- 7.3 Recycling was also recorded as taking place at a further 75 sites. C&DW was being recycled at nearly 90% of these sites, with few sites exclusively handling industrial and mineral waste. In addition there were 14 further inactive sites, half of which were where recycling could be re-activated, the others being sites with unimplemented permissions.

Construction and Demolition Waste

- 7.4 This AM survey recorded a total of some 2.5mt of C&DW being recycled in 2004. Some 1.4mt was produced to regular size or mixed size specification, and 1.1mt for construction fill. A further 630,000 tonnes of C&DW remained in stockpiles at the end of 2004. It has not been possible to identify how much of this total was produced by the aggregate industry. The figures should also be treated with caution as not representing the total recycling in the region.

Secondary Materials

- 7.5 In contrast to C&DW, much less secondary material is recorded as being recycled as aggregate, some 270,000 tonnes in total. 90% of this is spent railway ballast and metallurgical slag, with 10% recycled glass.

8 Environment

- 8.1 The AM2004 returns identified that of the 162 active and inactive gravel and crushed rock sites, two lie within the New Forest National Park, 19 (12%) lie in or partly within Areas of Outstanding Natural Beauty (AONB), 11 (7%) lie in or partly within Sites of Special Scientific Interest/Natural Nature Reserve (SSSI/NNR) designations, four (2%) in or partly within Special Areas of Conservation/Special Protection Areas (SAC/SPA) designations, and 50 (30%) in

or partly within Green Belt. Sand and gravel sites dominate these figures, with both of the National Park sites, 14 of the AONB sites, nine of the SSSI/NNR, all of the SAC/SPA, and 48 of the Green Belt sites.

- 8.2 Sales figures from these sites and an estimate of remaining reserves are only available from the national AM surveys – the last of which was in 2001, and the next in progress for 2005.
- 8.3 No wharves are located in an AONB or in the Green Belt. Three wharves are in or partly within an SSSI/NNR designation and one in an SAC/SPA designated area. One rail depot is in or partly within an AONB, and four are in the Green Belt.

9 Local Development Schemes and Minerals Development Plan Documents

- 9.1 The whole of the region is covered by Adopted Plan policies for minerals. With the advent of the Planning and Compulsory Purchase Act 2004, new arrangements apply. All MPAs were required to submit a Local Development Scheme (LDS) to the Government Office for the South East by 31 March 2005, and have done so. MPAs are then required to keep to the key milestones in the LDS up to 31 March 2007. The present position for Minerals Development Plan Documents (DPDs) is set out in Appendix B.

AGGREGATES MONITORING REPORT 2004

TABLES

TABLE I: SAND AND GRAVEL - SALES, PERMISSIONS AND RESERVES 2004
(South East region, thousand tonnes)

County	SOFT SAND (BUILDING SAND)				SHARP SANDS AND GRAVELS				TOTAL - ALL SANDS AND GRAVELS			
	Reserves at start of year	Sales during year	Permissions during year	Reserves at end of year	Reserves at start of year	Sales during year	Permissions during year	Reserves at end of year	Reserves at start of year	Sales during year	Permissions during year	Reserves at end of year
Berkshire Unitaries	C	C	0	C	C	C	0	C	13,490	993	0	C
Buckinghamshire	4,122	111	0	2,056	9,536	1,202	42	6,463	13,658	1,313	42	8,519
East Sussex	C	C	0	C	C	C	0	C	C	C	0	C
Hampshire	2,028	256	0	2,294	10,094	1,412	909	8,241	12,122	1,668	909	10,535
Isle of Wight	C	C	0	C	C	C	0	C	C	C	0	C
Kent	7,968	779	0	8,015	19,091	940	0	12,064	27,058	1,719	0	20,079
Medway	0	0	0	0	C	C	0	C	C	C	0	C
Milton Keynes	0	0	0	0	C	C	700	C	C	C	700	C
Oxfordshire	949	295	0	863	9,120	1,184	1,080	8,139	10,069	1,480	1,080	9,002
Surrey	7,792	729	0	8,868	6,230	1,426	150	4,234	14,022	2,155	150	13,103
West Sussex	3,836	386	0	3,485	1,636	486	0	1,465	5,472	872	0	4,950
TOTALS	28,407	2,624	950	26,947	68,682	7,781	2,881	53,861	97,089	10,405	2,881	80,809

Source: AM2004 survey

Footnotes to Table I

C = confidential figure or figure which cannot be recorded without revealing a confidential figure

0 = nil sales or less than 500 tonnes

Figures include estimates for sites where recorded information could not be obtained

The estimated reserves at a number of sites were revised following re-assessment by operators during the year

The figures for sharp sands and gravels include aggregate sold for construction fill, including as dug material. This comprises some 7% of both sales and reserves

Berks: 38% sand and gravel figures are based on 2003 returns

East Sussex: all figures are 2003 returns

Hants: includes estimates for 7 of 16 active quarries

Kent: over 30% sand and gravel sales and reserve figures are based on 2003 returns

Oxfordshire: 50% sales and 30% reserves estimated from 2003 returns

Surrey: the sharp sand and gravel permission was for an M25 borrow pit, but was not used.

TABLE 2: SALES OF SAND AND GRAVEL 2003 AND 2004

(South East region, thousand tonnes)

County	Soft Sand (Building Sand)			Sharp Sands and Gravels			Total - All Sands and Gravels		
	Sales in 2003	Sales in 2004	Percentage change	Sales in 2003	Sales in 2004	Percentage change	Sales in 2003	Sales in 2004	Percentage change
Berkshire Unitaries	C	C	C	C	C	C	1,000	993	0.0%
Buckinghamshire	86	111	29.0%	1,135	1,202	5.9%	1,221	1,313	7.5%
East Sussex	C	C	C	C	C	C	C	C	C
Hampshire	308	256	-17.0%	1,500	1,412	-6%	1,808	1,668	-8.0%
Isle of Wight	C	C	C	C	C	C	C	C	C
Kent	721	779	8.0%	1,148	940	-22.3%	1,869	1,719	-11.0%
Medway	0	0	0.0%	C	C	C	C	C	C
Milton Keynes	0	0	0.0%	C	C	C	C	C	C
Oxfordshire	234	295	26.0%	1,372	1,184	-13.7%	1,606	1,480	-7.8%
Surrey	819	729	-11.0%	1,423	1,426	-0.0%	2,242	2,155	-3.9%
West Sussex	367	386	5.2%	437	486	11.2%	804	872	8.5%
TOTAL	2,662	2,624	-0.1%	7,976	7,781	-2.4%	10,638	10,405	-2.2%

Sources: Table 2 of SEERAWP 04/09 and Table 1 of this report

Footnote to Table 2

C = confidential figure, or figure which cannot be recorded without revealing a confidential figure.

Berks, E Sussex, Hants, Kent, Oxon: see footnotes to Table 1

TABLE 3: SALES OF SAND AND GRAVEL 1994-2004

(South East region, thousand tonnes)

YEAR	SOFT SAND		SHARP SANDS & GRAVELS		ALL SANDS & GRAVELS	
	Sales	% change on previous year	Sales	% change on previous year	Sales	% change on previous year
1994	5513	44.3	9982	-9.1	15495	4.7
1995	4690e	-14.9	9090e	-8.9	13780e	-11.1
1996	4041	-13.8	8786	-3.3	12826	-6.9
1997	3492	-13.6	9378	6.7	12872	0.4
1998	3753	7.5	9328	-0.5	13369	3.9
1999	3696	-1.5	9614	3.1	13580	1.6
2000	3234	-12.5	9119	-5.1	12630	-7.0
2001	3067	-5.2	9382	2.9	12449	-1.4
2002	3,064	0	8,418	-10.3	11,484	-7.8
2003	2662	-13.1	7976	-5.3	10638	-7.4
2004	2624	-0.1	7781	-2.4	10405	-2.2
Percentage Change 1994-2004		-52.4%		-22.0%		-32.8%

Sources: SEERAWP 04/09 and Table 2 of this report

Footnote to Table 3

e = figure includes an estimate where confidentiality obscures precise figure

TABLE 4: SANDS AND GRAVEL - COMPARISON BETWEEN SALES AND PERMISSIONS 1995-2004

(South East region, million tonnes)

Year	Regional Apportionment	Sales	Planning permissions
1995	16.5	13.8	14.4
1996	16.5	12.8	8.7
1997	16.5	12.9	3.7
1998	16.5	13.4	6.6
1999	16.5	13.6	4.7
2000	16.5	12.6	6.9
2001	13.25	12.4	5.6
2002	13.25	11.5	6.5
2003	13.25	10.7	3.4
2004	13.25	10.4	2.9
10 year total		124.1	63.4
10 year average		12.4	6.3
last 3 year average		10.9	4.3

Sources: GOSE Proposed Changes to Regional Minerals Strategy SEERAWP 04/09 and Table I of this report

TABLE 5: SAND AND GRAVEL LANDBANK at end 2004

(South East region)

Area	All Sands and Gravels		
	Apportionment ⁸ (million tonnes)	Reserves (thousand tonnes)	Landbank at end of 2004 (years)
Berkshire Unitaries	1.57	C	>7
Buckinghamshire	0.99	8,519	8.5
East Sussex	0.01	C	>7
Hampshire	2.63	10,535	4
Isle of Wight	0.05	C	>7
Kent	2.38 ⁹	20,079	8.4
Medway	0.15 ⁹	C	<7
Milton Keynes	0.12	C	>7
Oxfordshire	1.82	9,002	4.9
Surrey	2.62	13,103	5
West Sussex	0.91	4,950	5.4
TOTALS	13.25	80,809	6.1

Sources: ⁸GOSE Proposed Changes to Regional Minerals Strategy and Table I of this report

Footnote to Table 5

⁹ sub-division agreed between Kent and Medway

c = confidential figure, or figure which cannot be identified without revealing a confidential figure

TABLE 6: CRUSHED ROCK - SALES, PERMISSIONS AND RESERVES 2003 and 2004
(South East region, thousand tonnes)

County	Sales in		Permissions in		Reserves at end	
	2003	2004	2003	2004	2003	2004
Kent	C	C	0	0	C	C
Oxfordshire	629	557	0	5,550	9,602	14,006
Surrey	C	C	0	0	C	C
West Sussex	C	C	0	0	C	C
Total	1,200¹⁰	1370¹⁰	0	5,550	52,400¹⁰	56400¹⁰

Source: SEERAWP 04/09 and AM2004 survey.

Footnotes to Table 6

C = confidential, or if identified will release another confidential figure.

The figures at the end of 2004 incorporate re-assessment of reserves at individual sites

Sales, permissions and reserves figures do not include chalk

50% of sales are for construction fill, including as dug, and 30% of reserves are only suitable for such use

¹⁰Figures rounded to preserve confidentiality

Kent: 51% sales and 17% reserves based on 2003 figures

TABLE 7: CRUSHED ROCK - SALES, PERMISSIONS AND RESERVES 1995-2004
(South East region, thousand tonnes)

Year	Sales	Permissions	Reserves	Years life at 2.2mtpa from 2001
1995	1237	0	47000 ^e	
1996	1282	0	47000 ^e	
1997	1372	0	47000 ^e	
1998	1244	750	47204	
1999	1315	12	45772	
2000	1730 ¹¹	0	43793	
2001	2360 ¹¹	94	53000 ¹¹	24.1
2002	1600 ¹¹	0	51900 ¹¹	23.6
2003	1200 ¹¹	0	52400 ¹¹	23.8
2004	1370 ¹¹	5550	56400 ¹¹	25.6
10-year average	1470			
last 3 year average	1390			

Sources: SEERAWP 04/09 and Table 6 of this report

Footnote to Table 7

Figures are for locally won rock, but do not include chalk to be comparable with Table 6

^e = estimates resulting from the exclusion of Oxfordshire ironstone from the figures

¹¹ = Oxfordshire figures include ironstone produced for aggregate, contrary to previous years

TABLE 8: LANDINGS OF MARINE DREDGED SAND AND GRAVEL 1995-2004
(South East region, thousand tonnes)

County	1995	1996	1997	1998	1999	2000	2001	2002	2003	2004
East Sussex	435	373	201	315	268	346	430	350	323	302
Hampshire	1748	1478	1366	1525	1638	1620	1698	1715	1763	1,615
Isle of Wight	175	130	162	118	188	179	151	130	208	91
Kent	2326	1846	1136	1777	1731	1823	1716	1856	1,804	1,498
Medway	1311	1109	1280	1348	1469	1693	1706	1751	1,672	1,440
West Sussex	1044	874	933	859	843	743	801	774	747	720
Total	7039	5810	5078	5942	6137	6404	6502	6575	6,517	5,666

Source: The Crown Estate, port statistics for marine-dredged aggregates

Footnotes to Table 8

Note: Shoreham Harbour landings are included in West Sussex figures, although one wharf is located in Brighton and Hove
AM2003 and AM2004 surveys produced somewhat higher figures, 6.6mt for both years

TABLE 9: MARINE IMPORTS OF CRUSHED ROCK 1995-2004
(South East region, thousand tonnes)

County	1995	1996	1997	1998	1999	2000	2001	2002	2003	2004
East Sussex	68	167	134	142	67	164	37	176	176	176
Hampshire	C	C	C	161	193	306	328	436	385	360
Isle of Wight	N	C	C	C	C	C	C	C	C	C
Kent and Medway	2180	1683	2034	1804	2071	4326	3159	3142	2,973	2561
West Sussex	155	111	86	123	285	365	236	264	223	43
Total	2480^e	2000	2315	2230	2620	5170	3790	4050	3800	3170

Source: SEERAWP 04/09 & AM2004 survey

Footnotes to Table 9

C = confidential, or if identified will release another confidential figure.

Medway included with Kent as all Medway figures would otherwise be confidential

N = no data available

^{||} = figure rounded to avoid revealing a confidential figure

^e = figure estimated

E Sussex - figures are estimated as for 2003 with crushed rock from North West, Wales, Cornwall and France.

Hampshire - crushed rock came from Scotland and South West.

IoW - origin unknown

Kent - crushed rock from Scotland, Wales, South West, France and Northern Ireland

Medway - crushed rock from Scotland, Wales, South West, France and Ireland

West Sussex - crushed rock from Ireland, Wales, five countries in Europe and China

Note: Marine-dredged sand and gravel is not included in this Table (see Table 8)

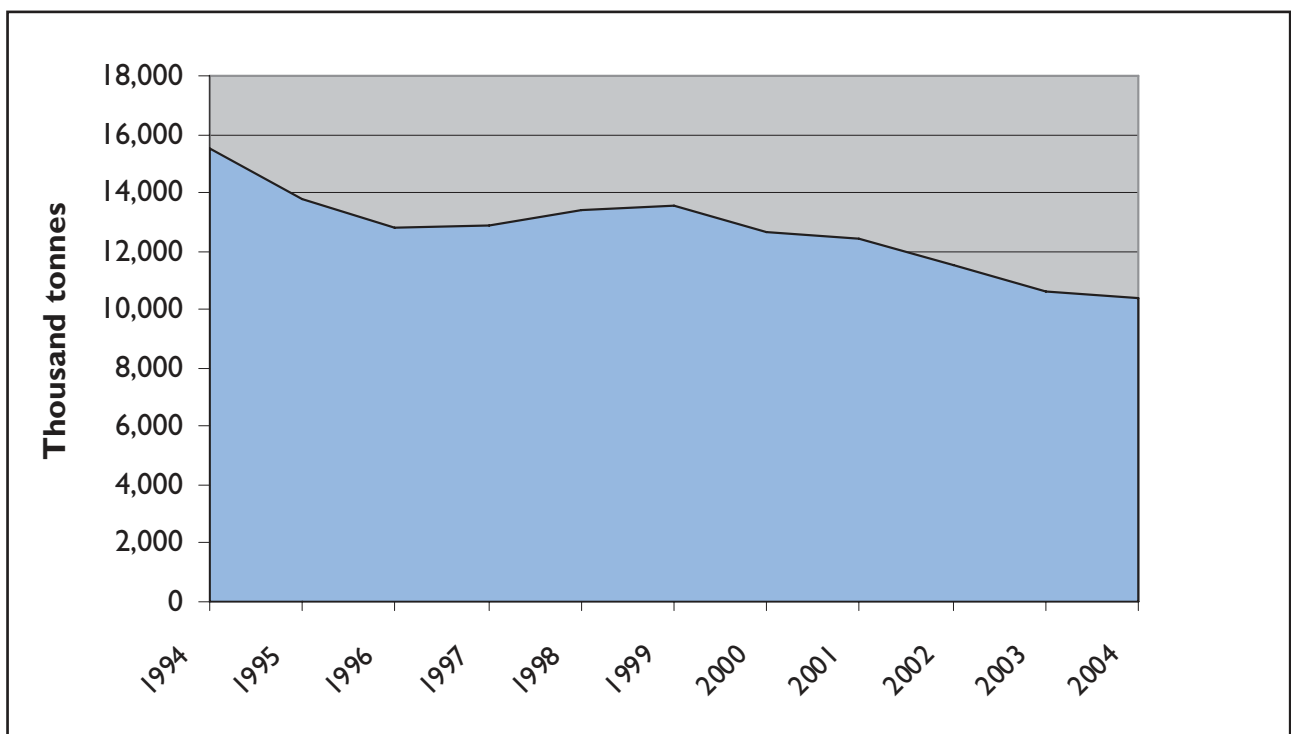
AGGREGATES MONITORING REPORT 2004 FIGURES

FIGURE 1: ADMINISTRATIVE AREAS IN THE SOUTH EAST



FIGURE 2: SALES OF SAND AND GRAVEL 1994 - 2004

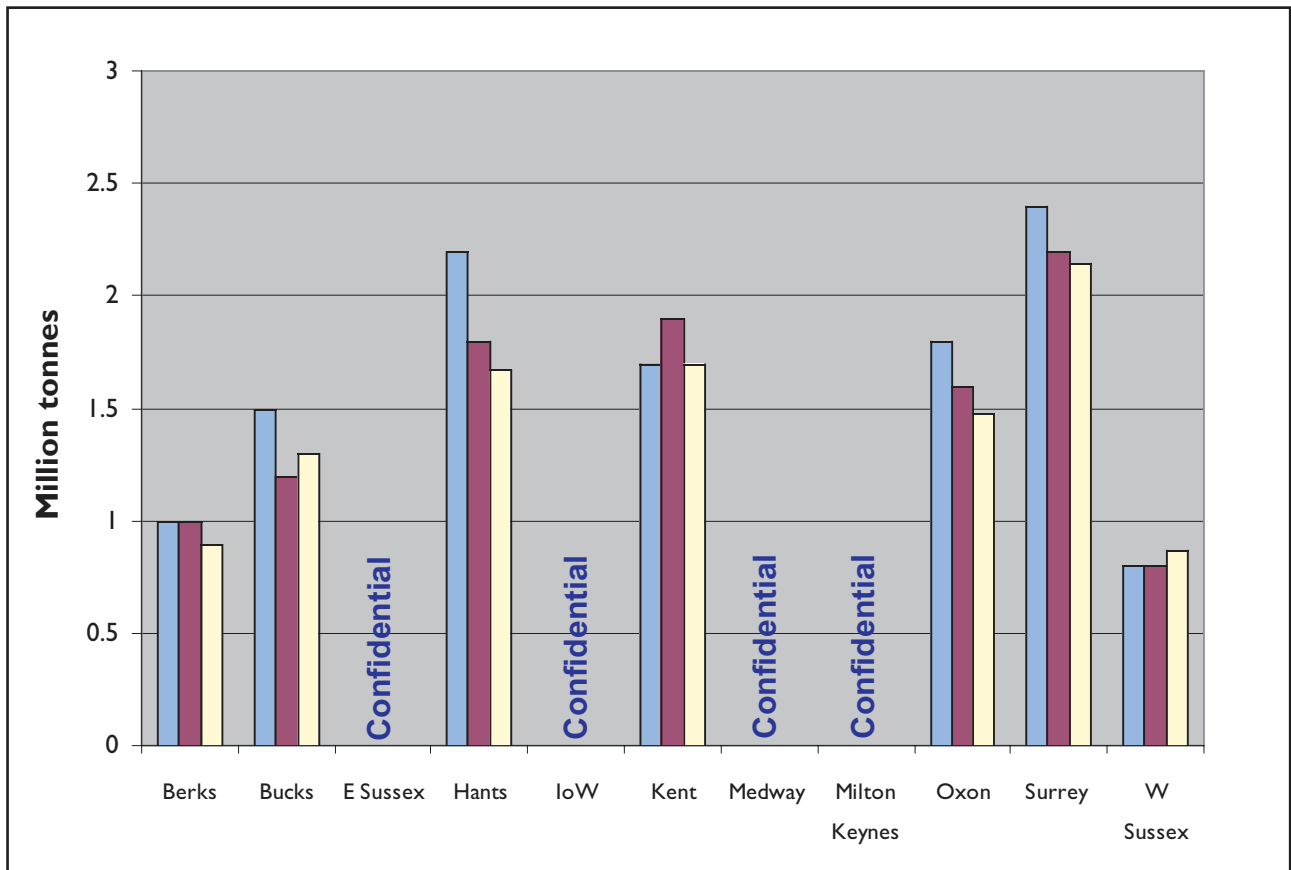
(South East region, thousand tonnes)



Source: Table 3

FIGURE 3: SALES OF SAND AND GRAVEL 2002 - 2003 - 2004

(South East region, million tonnes)



Sources: SEERAWP 03/11 and Table 2

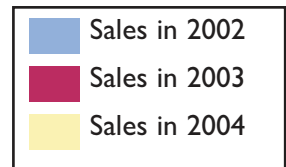
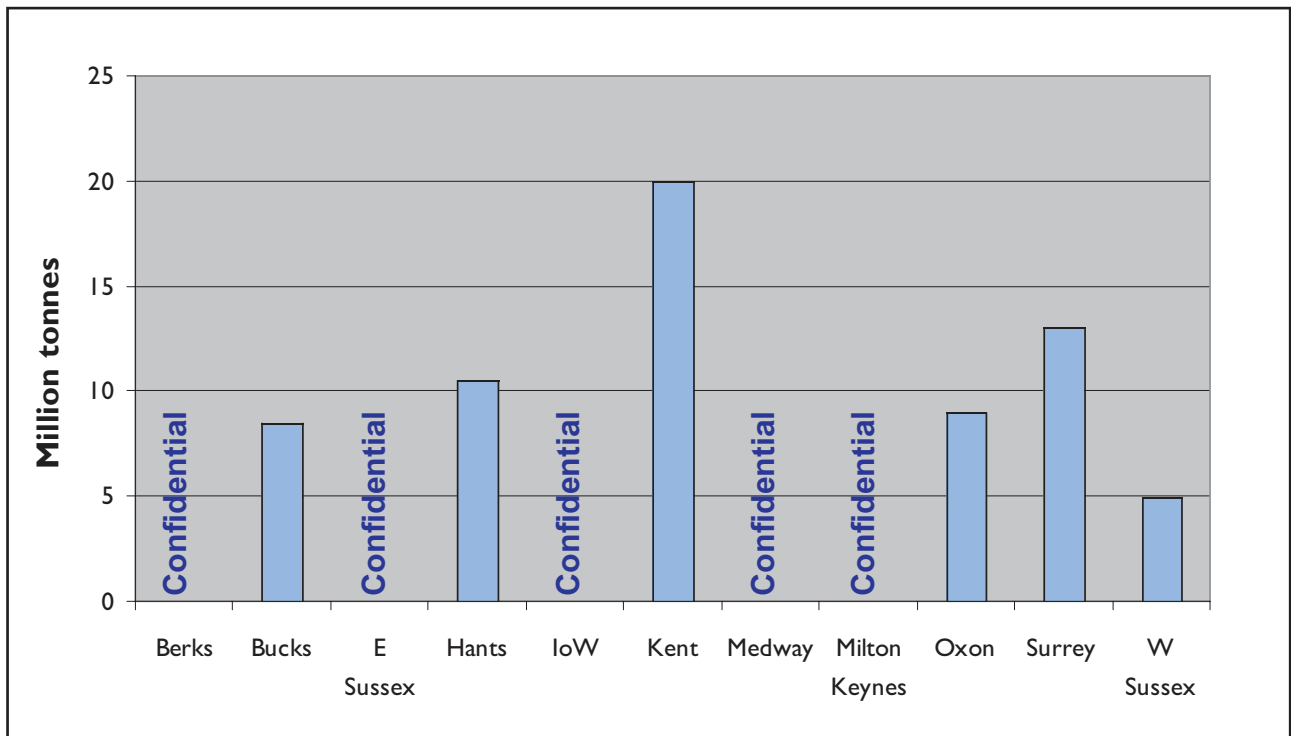


FIGURE 4: SAND AND GRAVEL RESERVES AT END OF 2004

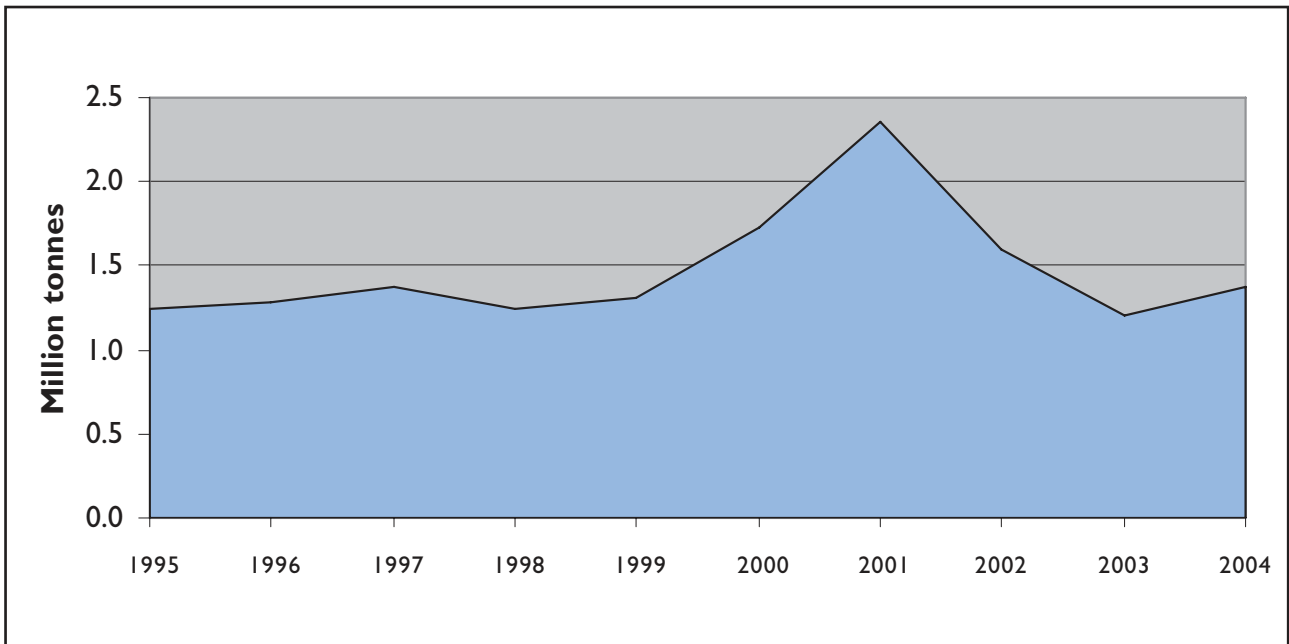
(South East region, million tonnes)



Source: Table 5

FIGURE 5: SALES OF LOCAL CRUSHED ROCK 1995 - 2004

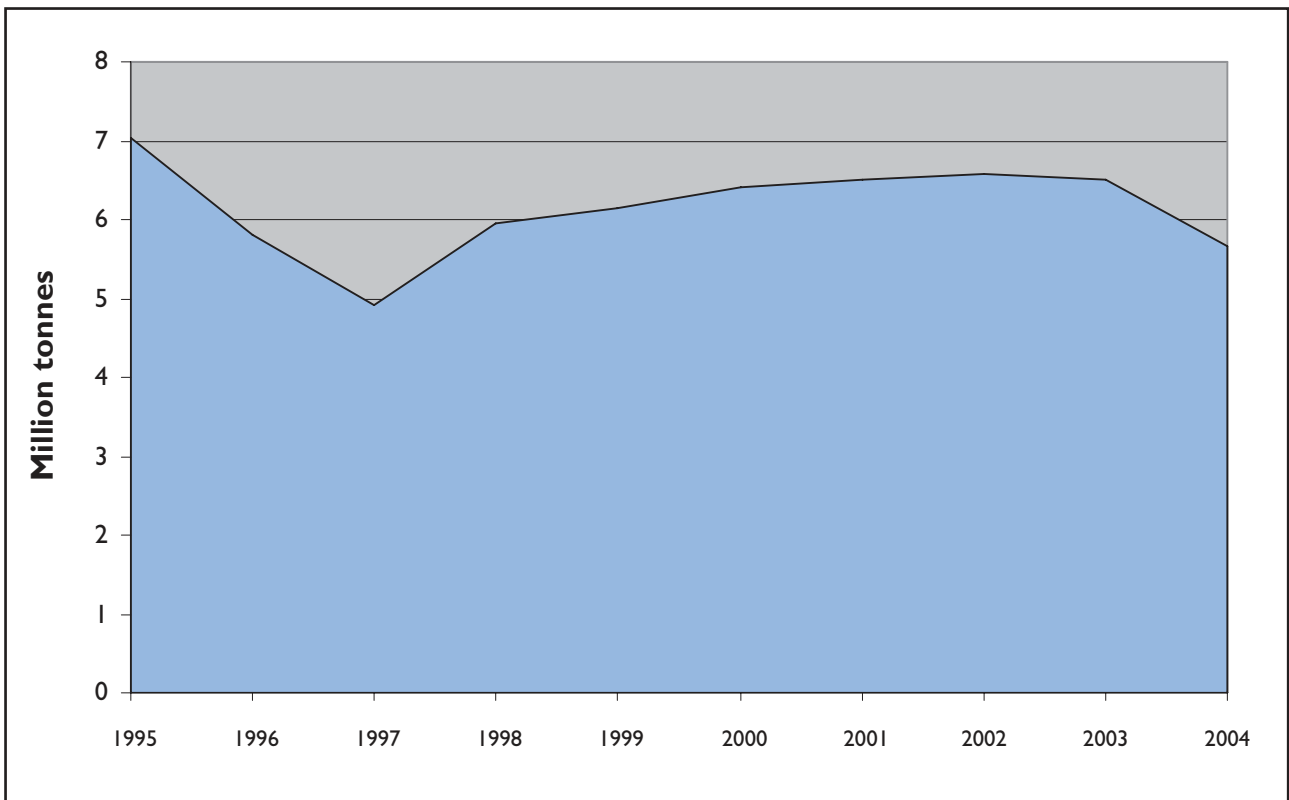
(South East region, million tonnes)



Source: Table 7

FIGURE 6: LANDINGS OF MARINE-DREDGED SAND AND GRAVEL 1995 - 2004

(South East region, million tonnes)



Source: Table 8

AGGREGATES MONITORING REPORT 2004

APPENDIX A

Aggregate Applications, Permissions and Refusals in 2004

Berkshire

Aggregate applications, permissions and refusals

There was one aggregate application permitted for a quarry extension in 2004 at Whistley Court, Wokingham. There were no refusals.

Secondary materials and aggregate recycling

There was one application for extension to a recycling facility at St Georges Land, Ascot. There were no refusals.

Buckinghamshire

Aggregate applications, permissions and refusals

There was one aggregate application permitted during 2004 for additional material from an existing site at Park Lodge, Iver Heath. There were no refusals.

Secondary materials and aggregate recycling

There was one application for recycling in Buckinghamshire during the year. An application at Park Lodge, Iver Heath was permitted. There were no refusals.

East Sussex and Brighton & Hove

Aggregate applications, permissions and refusals

There were no applications and no permissions or refusals in 2004.

Secondary materials and aggregate recycling

There were no applications and no permissions or refusals in 2004.

Hampshire, Portsmouth and Southampton

Aggregate applications, permissions and refusals

Two planning permissions for extraction of 909,000 tonnes of sand and gravel were granted in 2004 as extensions to Ibsley Quarry (Mockbeggar) (Tarmac) NF186 (509,000 tonnes) and Marchwood Quarry (Marchwood

Aggregates) NF172 (400,000 tonnes).

Secondary materials and recycling

Planning permissions for new waste management facilities granted in 2004 included development of an aggregates recycling facility to facilitate quarry restoration at Lode Farm, Kingsley (Tarmac) EH025 (100,000tpa) and construction and demolition waste recycling at Bury Farm, Curdridge (Grove Farms) WR196 (12,000tpa). An appeal against refusal to grant planning permission for 12 months to operate a waste recycling operation involving screening and crushing pre-sorted material to produce secondary aggregate at Bordon Sandpit, Sleaford (Zebra Waste Disposal Services) EH043 was dismissed in 2004. Two applications for construction and demolition waste recycling were refused in 2004 at Ridge Quarry, Romsey Extra (Raymond Brown) TV051 and Sole Hill Farm, Sherfield English (Town & Country Waste Services) TV209.

Isle of Wight

Aggregate applications, permissions and refusals

There were no applications and no permissions or refusals in 2004.

There were no applications and no permissions or refusals in 2004.

Kent

Aggregate applications, permissions and refusals

Despite fairly extensive allocations of Areas of Search within the adopted Minerals Local Plan, there were no new applications, permissions or refusals for aggregates in 2004. At the end of 2004, the 1.25mt extension to Hermitage Quarry (ragstone) remained undetermined.

Secondary materials and recycling

There were no new applications, permissions or refusals in 2004.

Medway

Aggregate applications, permissions and refusals

There were no new applications, permissions or refusals in 2004.

Secondary materials and recycling

There were no applications, permissions or refusals in 2004.

Wharves

A wharf with both rail and road access to handle minerals was permitted at Halling on the River Medway in 2004.

Milton Keynes

Aggregate applications, permissions and refusals

A sand and gravel extraction application at Calverton for 475,000 tonnes, was refused in 2003. It went to Public Inquiry and was dismissed by the Inspector in 2004 mainly on restoration grounds. A revised application was submitted at the end of 2004.

An application for 700,000 tonnes of sand and gravel extraction at Manor Farm was permitted in 2004 after the High Court did not give leave to a Town Council to take forward a judicial challenge against the Committee resolution.

Secondary material and recycling

There were no new applications, permissions or refusals in 2004.

Oxfordshire

Aggregate applications, permissions and refusals

Two permissions for extensions to sharp sand and gravel workings were permitted in 2004, at Stanton Harcourt and Cassington (appeal decision), totalling 1.08 million tonnes. Three permissions for extensions to limestone quarries were permitted in 2004, at Burford Quarry and Dewars Farm, adjacent to Ardley Quarry (both appeal decisions) and at Whitehill Quarry (small extension related to new access), totalling 5.55 million tonnes. There were no refusals in 2004.

Secondary materials and recycling

Permission was granted in 2004 for a new construction and demolition waste recycling site at Ferris Hill Farm, Hook Norton. There were no refusals in 2004.

Surrey

Aggregate applications, permissions and refusals

An application for a 150,000 tonnes sand and gravel borrow pit at Great Fosters was granted planning permission in 2004, whilst another borrow pit proposal for 50,000 tonnes at Muckhatch Lane was refused.

Secondary materials and recycling

Permission was refused for the continued use of land for the production of secondary aggregate from C&D waste at Shepperton Quarry.

West Sussex

Aggregate applications, permissions and refusals

A time extension of New Wharf, Brighton Road, Shoreham was permitted in 2004.

Secondary material and aggregate recycling

An extension of time was agreed in 2004 for the sale of recycled aggregate at Ashdean Farm.

AGGREGATES MONITORING REPORT 2004 APPENDIX B

Key Milestones for Minerals DPDs (and SPDs) in South East region

MPA	DPD or SPD title	Stakeholder & Community Engagement	Consultation on Issues & Options	Consultation on Preferred Options & Proposals	Submission to GOSE	Estimated date for Independent Examination	Estimated date for Adoption
Berkshire Unitaries Details as of revised LDS submitted 03/06 - but not approved	Minerals & Waste Core Strategy	Mar-May 2005	Sep-Nov 2005	Jan-Feb 2007	Nov 2007		Jul 2009
	Detailed Minerals DC Policies & Preferred Areas Proposals Map	Jun-Jul 2005	Jan 2007	Nov-Dec 2007	Nov 2008		Sep 2010
Bucks	(Minerals and Waste Local Plan adopted 27 April 2006) Minerals & Waste Core Strategy	Nov 2006 - Jan 2007	May - Jun 2007	Oct-Nov 2007	Mar 2008	Oct 2008	Mar 2009
	Minerals DC Policies & Preferred Areas for Devt.	Jul - Sep 2006	Feb - Mar 2007	Sep - Oct 2007	Feb 2008	Jul 2008	Dec 2008
East Sussex	Minerals (including Core Strategy & Sites) Minerals Proposals Map	Commenced Autumn 2004		Jul - Sep 2006	Feb 2007	July 2007	Dec 2007/ Jan 2008
	C&DW (SPD)	Commenced November 2004	Consultation November	on draft Aug - 2005	n/a	n/a	Dec 2005/ Jan 2006
Hampshire	Minerals & Waste Strategy	Completed	Completed	Sep - Nov 2005	May - Oct 2006	Jan/Feb 2007	Jul 2007
	Minerals Sites Plan (proposed dates)	Continuing to Nov 2006	Ongoing to Nov 2006	Mar - Apr 2007	Oct 2007	Jun 2008	Dec 2008
Isle of Wight	Minerals & Waste	Jan - Mar 2008	Apr - May 2008	Sep - Oct 2008	Jan 2009	Sep 2009	Mar 2010
	Development Control Policies	Dec 2006 - Jan 2007	Jul - Aug 2007	Nov-Dec 2007	Feb 2008	Sep 2008	Apr 2009

AGGREGATES MONITORING REPORT 2004 APPENDIX B (CONT)

Key Milestones for Minerals DPDs (and SPDs) in South East region (cont)

MPA	DPD or SPD title	Stakeholder & Community Engagement	Consultation on Issues & Options	Consultation on Preferred Options & Proposals	Submission to GOSE	Estimated date for Independent Examination	Estimated date for Adoption
Kent	Core Mineral Strategy, Primary Mineral DC Policies Construction Aggregates	Sep - Oct 2004 Jan - Jul 2005	Sep - Oct 2005	Summer 2006	Nov 2006		
Medway	Awaiting data						
Milton Keynes	No Minerals DPD as Minerals Local Plan adopted 28 April 2006						
Oxfordshire	Minerals (& Waste) Core Strategy	Commenced Mar 2005	Jun 2006	Nov - Dec 2006	Jul 2007	Jan - Feb 2008	Oct 2008
	Minerals Site Proposals & Policies	Commenced Mar 2005	Jun 2006	May - Jun 2007	Feb 2008	Sep - Oct 2008	Jul 2009
	Minerals (& Waste) Development Code of Practice (SPD)	Commence Jan 2007	Single stage	consultation Nov - Dec 2007	n/a	n/a	Oct 2008
Surrey	Minerals Core Strategy Primary Aggregates Minerals DC Policies Minerals Proposals Map	Jan 2003	Feb 2005	Apr 2006	Jun 2007	Mar 2008	Oct 2008
	Recycled & Secondary Aggregates Rail Aggregate Depots Construction & Demolition Waste	Jan 2003 -	Jan 2008	Jan 2009	Jan 2010	Oct 2010	May 2011
	Minerals Site Specific Development Briefs (SPD)	Draw on minerals DPD consultations		Timescale to be set in future mineral dev. scheme		n/a	
West Sussex	Minerals and Waste Core Strategy (including DC policies)	Commenced May 2006	n/a (no specific exercise in view of previous work)	Jan - Feb 2007	Oct 2007	Sep - Oct 2008	Jul 2009

AGGREGATES MONITORING REPORT 2004

APPENDIX C

Summary of Publications on Aggregates available from the Regional Assembly

Document Number	Title and Synopsis	
SEERAWP	01/01 SEERAWP AM96, AM97, AM98	£20 each
	01/02 Revision of SERAWP Annual Monitoring reports, SERAWP	
	01/03 230, 235, 300 for 1996, 1997 and 1998 to the South East England Regional Assembly boundary	
SEERAWP	01/04 Annual Monitoring reports for the South East in 1999	£20 each
	01/10 2000	
	02/11 2001	
	03/11 2002	
	04/09 2003	
SEERAWP	02/02 Survey of Marine Wharves and Rail Depots in the South East – Their Capacity for Use by the Aggregates Industry [December 2002]	£5
	Reports on data relating to wharves and depots at end of 2000, including the volume of material handled, and examines constraints and the capacity and future capacity of the sites.	
SEERAWP	06/13 Fourth Annual Report of SEERAWP [June 2006]	£5
	Report on the main activities of SEERAWP between April 2005 and March 2006, and looking forward to the 2006-2007 programme.	
SEERAWP	06/09 SEERAWP AM2004 [June 2006]	£20
	Annual Monitoring report for the South East in 2004. Presents data on sales, planning permissions and reserves of sand and gravel and crushed rock in the region. Also includes data on marine dredged aggregates and crushed rock imports. Includes nine tables, six figures, and four appendices, including key milestones in Development Plan Documents for minerals.	

These publications may be ordered from the address on the inside cover page of this report. Please quote the document number and title, and make a cheque payable to SEERA Ltd.

Revised Regional Planning Guidance (RPG9) – Minerals Chapter 11

Proposed Alterations were submitted by the Regional Assembly to the Government Office for the South East (GOSE) in March 2004, as a revision to RPG9 Minerals Chapter 11.

An Examination in Public was held into the Proposed Alterations (together with Waste) in October 2004 and the Panel reported in January 2005.

GOSE published Proposed Changes in August 2005, and the final report Regional Planning Guidance for the South East (RPG9), Revised Chapters 10 (part) Waste and 11 Minerals, was published by GOSE in July 2006.

Copies of the final report can be obtained for a fee from The Stationery Office,
PO Box 29, Norwich NR3 1GN Tel 0870 600 5522

AGGREGATES MONITORING REPORT 2004

APPENDIX D

Active and Inactive Aggregate Sites, Rail Depots, Wharves and Other Sites Producing Recycled Aggregates

Sand and Gravel

Berkshire Unitaries

Old Kiln Farm, Chieveley	S Grundon Ltd	SU 484 726
Raghill Farm, Aldermaston	S Grundon Ltd	SU 612 645
Star Works, Knowl Hill	S Grundon Ltd	SU 815 797
Theale Pit	Hanson Aggregates	SU 665 700
Harts Hill Copse, Upper Bucklebury	Harleyford Aggregates Ltd	SU 531 687
Woolhampton Quarry	Lafarge Aggregates	SU 570 658
Bath Road, Midgham	Marley Tile Co Ltd	SU 561 666
Berkyn Manor Farm, Horton	RMC Aggregates (Gr London) Ltd	TQ 023 763
Aldermaston Wharf, Aldermaston	RMC Aggregates (Southern) Ltd	SU 609 670
Kingsmead Quarry, Horton	RMC Aggregates (Gr London) Ltd	TQ 010 753
Manor Farm, Finchampstead	RMC Aggregates (Southern) Ltd	SU 800 625
Sheephouse Farm, Maidenhead	Summerleaze Ltd	SU 890 835
Whistley Court Farm/Lea Farm, Hurst	Summerleaze Ltd	SU 788 735
Lower Farm Greenham	Tarmac Southern Ltd	SU 500 664

<i>Craven Keep, Hampstead Marshall</i>	<i>Earthline Ltd</i>	<i>SU 417 665</i>
<i>Copyhold Farm, Curridge</i>	<i>RK Eggleton</i>	<i>SU 490 728</i>
<i>Bath Road, Midgham</i>	<i>S Grundon Ltd</i>	<i>SU 552 666</i>
<i>Kennetholme Farm, Midgham</i>	<i>S Grundon Ltd</i>	<i>SU 552 661</i>
<i>Beenham Pit</i>	<i>Marley Tile Co</i>	<i>SU 600 680</i>
<i>Poyle Manor North</i>	<i>RMC Aggregates (Gr London) Ltd</i>	<i>TQ 028 767</i>

Buckinghamshire

Hyde Farm, Beaconsfield	Aggregate Industries	SU 965 894
Park Lodge, Iver Heath	Brett Aggregates	TQ 018 835
Eton Rowing Course, Dorney	Eton Aggregates Ltd	SU 925 783
The Lea, Denham	Harleyford Aggregates	TQ 050 860
Little Marlow	Lafarge Aggregates	SU 871 880
Springfield Farm, Beaconsfield	Springfield Farms	SU 930 894
Beechwood Nurseries, East Burnham	Summerleaze Ltd	SU 955 838
All Souls Farm, Wexham	Tarmac Southern	TQ 000 820

<i>Warren Farm, Chalfont St Peter</i>	<i>Earthline Ltd</i>	<i>TQ 015 910</i>
<i>Rammamere Heath, Great Brickhill</i>	<i>Lafarge Aggregates</i>	<i>SP 920 310</i>
<i>Berryhill Farm, Taplow</i>	<i>Summerleaze Ltd</i>	<i>SU 913 820</i>

East Sussex and Brighton & Hove

None

<i>Nook Beach</i>	<i>DB Earthmoving & Plant Hire Ltd</i>	<i>TQ 927 178</i>
<i>Novington Sand Pit</i>	<i>Dudman Group of Companies</i>	<i>TQ 367 145</i>

Hampshire, Portsmouth & Southampton

Bleak Hill, Somerley	CEMEX Materials Ltd - South East	SU 131 108
Kimbridge Farm, Mottisfont	CEMEX Materails Ltd - South East	SU 321 254
Ringwood Quarry, Blashford	CEMEX Materials Ltd - South East	SU 155 075

Badminton Farm, Fawley	CEMEX Materials Ltd - South East	SU 467 021
Eversley Quarry, Bramshill	CEMEX Materials Ltd - South East	SU 775 597
Frithend Sand Pit, Sleaford	Grundon Waste Management Ltd	SU 813 390
Rabbitfield Hill Sand Pit, Frithend	Grundon Waste Management Ltd	SU 811 385
Mortimer Quarry, Mortimer West End	Hanson Aggregates	SU 624 643
Ringwood Quarry, Ellingham	Hanson Aggregates	SU 151 078
Eversley Quarry, Eversley	Lafarge Aggregates	SU 794 592
Marchwood Quarry, Marchwood	Marchwood Aggregates	SU 377 110
Manor Farm, Pennington	New Milton Sand & Ballast	SZ 312 930
Rookey Farm, Kingsley	Tarmac Southern	SU 780 378
Blue Haze Sand Pit, Somerley	Tarmac Southern	SU 119 074
Nea Farm, Somerley	Tarmac Southern	SU 127 087
Mockbeggar Quarry, Ibsley	Tarmac Southern	SU 155 097
Ridge Farm, Romsey	Viridor Waste Management	SU 339 184
Squabb Wood, Romsey	Viridor Waste Management	SU 330 214
<i>Chandlers Farm, Eversley</i>	<i>CEMEX Materials Ltd - South East</i>	<i>SU 801 619</i>
<i>Manor Farm, Timsbury</i>	<i>CEMEX Materials Ltd - South East</i>	<i>SU 348 241</i>
<i>Fair Oak Sand Pit, Fair Oak</i>	<i>Grundon Waste Management Ltd</i>	<i>SU 505 182</i>
<i>Mount Pleasant, Sway</i>	<i>New Milton Sand & Ballast</i>	<i>SZ 440 840</i>

Isle of Wight

St Georges Lane, Newport	Bardon Vectis	SZ 510 876
Haslett Farm, Shorwell	BR & GA Draper	SZ 461 822
Knighton Sand Pit	Knighton Sand	SZ 574 865
Cheverton Down, Shorwell	D Newnham	SZ 440 840

Kent

Borough Green Sand Pit, Borough Green	Borough Green Sandpits Ltd	TQ 617 576
Charing Quarry, nr Ashford	Brett Aggregates Ltd	TQ 936 492
Conningbrook Quarry, Ashford	Brett Aggregates Ltd	TR 031 437
Deanery Farm, Chartham	Brett Aggregates Ltd	TR 097 553
Faversham Quarries	Brett Aggregates Ltd	TR 014 626
Lydd Quarry (Scotney Court Farm), Lydd	Brett Aggregates Ltd	TR 020 201
Milton Manor Quarry, nr Canterbury	Brett Aggregates Ltd	TR 117 556
Trenley Park Wood	Brett Aggregates Ltd	TR 189 590
Aylesford Quarry, Aylesford	CEMEX UK	TQ 725 595
Chilston Quarry, Lenham	CEMEX UK	TQ 883 514
Denge Quarry, Dungeness	CEMEX UK	TR 77 220
Postern Park Quarry, nr Tonbridge	CEMEX UK	TQ 615 470
Darenth & Blackdale Farm, Dartford	J Clubb Ltd	TQ 560 724
East Peckham Quarry, E Peckham	J Clubb Ltd	TQ 679 492
Nepicar Sand Quarry, nr Sevenoaks	J Clubb Ltd	TQ 625 579
Addington Sand Pit, Wrotham	Hanson Aggregates	TQ 647 594
Lenham Quarry (Shepherds Farm), Lenham	Hanson Aggregates	TQ 916 504
Joyce Green Quarry	Hanson (Joyce Green Aggregates)	TQ 539 759
Crickets Farm, Ightham, Sevenoaks	Ightham Sandpit (Trodell)	TQ 602 575
Hook Lane, Charing	Lafarge Aggregates Ltd	TQ 942 489
Stone Castle Farm, nr Tonbridge	Lafarge Aggregates Ltd	TQ 651 470
Squerryes Sand Pit, Westerham	Lafarge Roofing	TQ 434 543
West Hythe Ballast Pit, West Hythe	Nickolls Quarries Ltd	TR 130 331
Greatness Farm (Sevenoaks Quarry)	Tarmac Southern Ltd	TQ 537 573

<i>Highsted Quarry, Chislet</i>	<i>Brett Aggregates Ltd</i>	<i>TR 211 666</i>
<i>Allens Bank, Lydd</i>	<i>Brett Aggregates Ltd</i>	<i>TR 044 217</i>
<i>Ightham Sand Pit</i>	<i>H & H Celcon Ltd</i>	<i>TQ 560 195</i>
<i>Winterbourne Quarry, nr Faversham</i>	<i>Pearsons Ballast Ltd</i>	<i>TR 066 575</i>
<i>Ham Hill Sand Pit (Snodland Quarry)</i>	<i>Tarmac Southern Ltd</i>	<i>TQ 693 610</i>

Medway

<i>Isle of Grain Quarry, Perrys Farm, Grain</i>	<i>J Clubb Ltd</i>	<i>TQ 880 765</i>
---	--------------------	-------------------

Milton Keynes

<i>Broughton Barn, Milton Keynes</i>	<i>Aggregates Industries</i>	<i>SP 098 064</i>
--------------------------------------	------------------------------	-------------------

<i>Caldecote Farm, Milton Keynes</i>	<i>Aggregates Industries</i>	<i>SP 876 422</i>
<i>Manor Farm, Old Wolverton</i>	<i>Hanson Aggregates</i>	<i>SP 803 421</i>

Oxfordshire

<i>Sutton Wick Quarry, Abingdon</i>	<i>J Curtis & Sons Ltd</i>	<i>SU 491 951</i>
<i>Hatford Quarry, Hatford</i>	<i>Earthline Ltd</i>	<i>SU 334 954</i>
<i>Shellingford Quarry</i>	<i>Earthline Ltd</i>	<i>SU 327 937</i>
<i>Wicklesham Quarry, Faringdon</i>	<i>Grundon</i>	<i>SU 293 941</i>
<i>Watkins Farm, Stanton Harcourt</i>	<i>Hanson Aggregates</i>	<i>SP 425 037</i>
<i>Worton Rectory Farm, Cassington</i>	<i>Hanson Aggregates</i>	<i>SP 475 110</i>
<i>Bowling Green Farm, Faringdon</i>	<i>Hills Minerals & Waste Ltd</i>	<i>SU 312 948</i>
<i>Tubney Wood Quarry, Tubney</i>	<i>Hills Minerals & Waste Ltd</i>	<i>SP 448 007</i>
<i>Caversham Quarry</i>	<i>Lafarge Aggregates</i>	<i>SU 739 749</i>
<i>Finmere Quarry</i>	<i>Premier Aggregates Ltd</i>	<i>SP 628 322</i>
<i>Duns Tew Quarry</i>	<i>Smith & Sons (Bletchington) Ltd</i>	<i>SP 455 276</i>
<i>Gill Mill Quarry, Ducklington</i>	<i>Smith & Sons (Bletchington) Ltd</i>	<i>SP 369 074</i>
<i>Hardwick Quarry</i>	<i>Smith & Sons (Bletchington) Ltd</i>	<i>SP 382 062</i>
<i>Thrupp Lane Quarry, Radley</i>	<i>H Tuckwell & Sons Ltd</i>	<i>SU 523 978</i>

<i>Thrupp Farm, Radley</i>	<i>J Curtis & Sons Ltd</i>	<i>SU 512 978</i>
<i>Sutton Courtenay Pit</i>	<i>Hanson Aggregates</i>	<i>SU 512 935</i>
<i>Little Faringdon, Lechlade</i>	<i>Lord de Mauley</i>	<i>SU 224 987</i>
<i>Sands Hill Quarry, Faringdon</i>	<i>Rogers Concrete Ltd</i>	<i>SU 288 943</i>

Surrey

<i>Seale Lodge</i>	<i>A & J Bull</i>	<i>SU 892 470</i>
<i>Homefield</i>	<i>Chambers Runfold plc</i>	<i>SU 876 475</i>
<i>Reigate Road Quarry</i>	<i>J & J Franks</i>	<i>TQ 206 505</i>
<i>Farnham Quarry</i>	<i>Hanson Aggregates</i>	<i>SU 875 484</i>
<i>Queen Mary Reservoir</i>	<i>Reservoir Aggregates</i>	<i>TQ 071 696</i>
<i>Coldharbour Lane</i>	<i>RMC Aggregates</i>	<i>TQ 023 688</i>
<i>Wey Manor Farm</i>	<i>RMC Aggregates</i>	<i>TQ 060 632</i>
<i>Molesley Reservoirs</i>	<i>RMC/Island Barn Aggregates</i>	<i>TQ 119 688</i>
<i>Home Farm</i>	<i>Shepperton Aggregates</i>	<i>TQ 056 688</i>
<i>Albury Sand Pit</i>	<i>SITA</i>	<i>TQ 056 484</i>
<i>Runfold Quarry (Princess Royal)</i>	<i>SITA</i>	<i>SU 863 470</i>
<i>Moorhouse Sand Pit</i>	<i>Titsey Estates</i>	<i>TQ 419 534</i>
<i>Hengrove Farm</i>	<i>Streeters</i>	<i>TQ 052 721</i>
<i>Staines Road Farm</i>	<i>H Streeter Ltd</i>	<i>TQ 074 679</i>
<i>North Park Farm</i>	<i>WBB Minerals</i>	<i>TQ 341 517</i>

<i>Hithermoor Quarry</i>	<i>Brett Aggregates Ltd</i>	<i>TQ 034 747</i>
<i>Broombank Quarry</i>	<i>Compton Estates</i>	<i>TQ 386 581</i>
<i>Alton Road</i>	<i>RMC Aggregates</i>	<i>SU 820 449</i>
<i>Stanwell II & III</i>	<i>RMC Aggregates</i>	<i>TQ 049 746</i>

West Sussex

<i>Pendean Quarry, Pendean</i>	<i>CEMEX/RMC Agg. (Southern) Ltd</i>	<i>SU 890 200</i>
<i>Sandgate Park Quarry, Sullington</i>	<i>CEMEX/RMC Agg.(Southern) Ltd</i>	<i>TQ 103 141</i>
<i>West Heath Quarry, West Harting</i>	<i>CEMEX/RMC Agg. (Southern) Ltd</i>	<i>SU 784 228</i>
<i>Chantry Lane Quarry, Sullington</i>	<i>Dudman Aggregates Ltd</i>	<i>TQ 094 139</i>
<i>Minsted Sandpit, Minstead</i>	<i>Dudman Aggregates Ltd</i>	<i>SU 855 215</i>
<i>Valdoe Quarry, Goodwood</i>	<i>Dudman Aggregates Ltd</i>	<i>SU 878 084</i>
<i>Westhampnett BMW site, Westhampnett</i>	<i>Dudman Aggregates Ltd</i>	<i>SU 884 076</i>
<i>Hampers Lane Sandpit, Sullington</i>	<i>Hanson Aggregates</i>	<i>TQ 107 138</i>
<i>Drayton Gravel Pit, Chichester</i>	<i>Tarmac Southern Ltd</i>	<i>SU 886 042</i>
<i>Heath End Quarry, Duncton</i>	<i>Tarmac Southern Ltd</i>	<i>SU 963 188</i>
<i>Portfield Quarry, Oving</i>	<i>Tarmac Southern Ltd</i>	<i>SU 881 053</i>
<i>Rock Common Sandpit, Washington</i>	<i>Tarmac Southern Ltd</i>	<i>TQ 126 135</i>

<i>Boxgrove Gravel Quarry, Boxgrove</i>	<i>CEMEX/RMC Agg (Southern Ltd)</i>	<i>SU 917 081</i>
<i>Angells Sand Pit Sullington</i>	<i>FL Gamble & Sons Ltd</i>	<i>TQ 099 140</i>
<i>Slindon Bottom Gravel Pit, Slindon</i>	<i>FL Gamble & Sons Ltd</i>	<i>SU 950 082</i>
<i>Lt Hambrook Farm Gravel Pit, Funtington</i>	<i>Hanson Aggregates</i>	<i>SU 777 082</i>
<i>Eartham Gravel Pits, Boxgrove</i>	<i>Hanson Aggregates/FL Gamble</i>	<i>SU 928 082</i>

Crushed Rock

Berkshire Unitaries

Buckinghamshire

East Sussex and Brighton & Hove

Hampshire, Portsmouth and Southampton

Medway

Milton Keynes

Isle of Wight

None

Kent

<i>Hermitage Quarry, Maidstone</i>	<i>Gallagher Aggregates</i>	<i>TQ 722 560</i>
<i>Blaise Farm, West Malling</i>	<i>Hanson Aggregates</i>	<i>TQ 660 560</i>

Oxfordshire

<i>Alkerton Quarry</i>	<i>Peter Bennie Ltd</i>	<i>SP 387 431</i>
<i>Horton Grounds Quarry, Horton</i>	<i>Peter Bennie Ltd</i>	<i>SP 382 448</i>
<i>Wroxton Fields Quarry, Wroxton</i>	<i>Peter Bennie Ltd</i>	<i>SP 405 415</i>
<i>Burford Quarry</i>	<i>Enstone Breedon Ltd</i>	<i>SP 277 099</i>
<i>Rollright Quarry</i>	<i>Hanson Aggregates</i>	<i>SP 284 306</i>
<i>Woodeaton Quarry</i>	<i>Land Recovery Ltd</i>	<i>SP 533 123</i>
<i>Ardley Quarry</i>	<i>Smith & Sons (Bletchington) Ltd</i>	<i>SP 542 261</i>
<i>Worsham Quarry</i>	<i>Smith & Sons (Bletchington) Ltd</i>	<i>SP 298 102</i>

<i>Slape Hill Quarry, Glympton</i>	<i>John Sheehan (Oxford) Ltd</i>	<i>SP 442 196</i>
<i>Whitehill Quarry</i>	<i>Smith & Sons (Bletchington) Ltd</i>	<i>SP 270 108</i>

Surrey

Oxted Chalk Quarry	Tarmac Southern Ltd	TQ 382 544
Pitch Hill Quarry	GW Verrall & Son	TQ 080 426

West Sussex

Bognor Common Stone Quarry		
Fittleworth	Local Stone Co. Ltd	TQ 009 214

Wharves

Berkshire Unitaries

Buckinghamshire

Milton Keynes

Oxfordshire

Surrey

None

East Sussex and Brighton & Hove

North Quay, Newhaven	Hanson Aggregates	TQ 447 016
North Quay, Newhaven	RMC Aggregates (Southern) Ltd	TQ 447 017
Rastrums Wharf, Rye	RMC Aggregates (Southern) Ltd	TQ 939 192
North Quay, Newhaven	Solent Aggregates (UMA)	TQ 446 018
<i>Rye Wharf</i>	<i>Hanson Aggregates</i>	<i>TQ 930 197</i>
<i>Halls Ferry, Shoreham Wharf</i>	<i>RMC Aggregates (Southern) Ltd</i>	<i>TQ 261 048</i>

Hampshire, Portsmouth and Southampton

Supermarine Quay, Woolston, S'hampton	Aggregate Supplies	SU 435 118
Kendall's Wharf, Portsmouth	Kendall Bros	SU 675 032
Fareham Wharf, Fareham	Lafarge Aggregates	SU 580 059
Marchwood Wharf, Marchwood	Lafarge Aggregates	SU 399 111
Tipner Wharf, Portsmouth	Lafarge Aggregates	SU 640 036
Leamouth Wharf, Southampton	CEMEX Materials Ltd - South East	SU 433 123
Bedhampton Wharf, Havant	Solent Aggregates	SU 705 056
Burnley Wharf, Southampton	Solent Aggregates	SU 430 117
Southampton Docks	Foster Yeoman	SU 400 120
<i>Willments Wharf, Woolston</i>	<i>Aram Resources</i>	<i>SU 435 119</i>
<i>Vancouver Wharf, Southampton</i>	<i>-</i>	<i>SU 434 117</i>

Isle of Wight

Kingston Wharf, East Cowes	Island Marine Aggregates	SZ 504 944
PD Wharf, Cowes	PD Ports, Logistics & Shipping	SZ 499 945
Blackhouse Quay, Newport	Site Services Ltd	SZ 501 899
<i>Stag Lane, Newport</i>	<i>Lafarge/Malcolm Thorpe</i>	<i>SZ 505 917</i>

Kent

Ramsgate New Port, Ramsgate	Brett Aggregates Ltd	TR 379 639
Robins Wharf (Grove Road), Northfleet	Brett Aggregates Ltd	TQ 616 751
Ridham Dock, Ridham	Brett Aggregates Ltd	TQ 592 168
Dunkirk Jetty, Dover	Brett Hall Ltd	TR 320 404

Northfleet Wharf (Botany Marshes), N'fleet	CEMEX UK	TQ 611 759
Denton Wharf (Clubb Marine) Gravesend	J Clubb Ltd	TQ 667 742
Robins Wharf, Northfleet	Foster Yeoman Ltd	TQ 561 174
Johnsons Wharf, Greenhithe	Lafarge Aggregates Ltd	TQ 582 751
Red Lion Wharf, Gravesend	Stema Shipping (UK) Ltd	TQ 617 750
Ridham Dock, Sittingbourne	United Marine Aggregates	TQ 919 687
East Quay, Whitstable Harbour	Whitstable Harbour	TR 108 671

Medway

Northsea Terminal, Cliffe	Brett Aggregates Ltd	TQ 720 755
Isle of Grain, Grain	Foster Yeoman Ltd	TQ 875741
Eurowharf, Frindsbury, Rochester	Hanson Aggregates	TQ 754 695

<i>Corys Wharf, Rochester</i>	<i>RMC Aggregates (Southern) Ltd</i>	<i>TQ 747 686</i>
-------------------------------	--------------------------------------	-------------------

West Sussex

Chatham Docks, Chatham	Stema Shipping (UK) Ltd	TQ 772 696
Shoreham Wharf, (Halls Wharf), Portslade	CEMEX/RMC Agg. (Southern) Ltd	TQ 258 049
Turberville Wharf, Southwick	Dudman Aggregates Ltd	TQ 240 049
Free Wharf, Shoreham	Menelco Specialities Ltd	TQ 222 050
New Wharf, Shoreham	Kendall Bros (Portsmouth) Ltd	TQ 224 050
Solent /ARC Wharf, Portslade	Solent Aggregates Ltd	TQ 254 048
Railway Wharf, Littlehampton	Tarmac Southern Ltd/UMA	TQ 019 023

<i>Kingston Wharf, Shoreham</i>	<i>formerly UMA</i>	<i>TQ 230 050</i>
<i>Littlehampton Wharf, Littlehampton</i>	<i>Solent Aggregates Ltd</i>	<i>TQ 501 102</i>

Rail Depots

East Sussex and Brighton & Hove

Isle of Wight

Medway

None

Berkshire Unitaries

Colnbrook	Foster Yeoman	TQ 042 777
Theale	Foster Yeoman	SU 635 706
Theale	Hanson	SU 635 704

Buckinghamshire

Thorney Mill Road, West Drayton	Aggregate Industries	TQ 049 795
---------------------------------	----------------------	------------

Hampshire, Portsmouth and Southampton

Botley Rail Depot, Curdridge	Foster Yeoman	SU 520 133
Eastleigh Rail Depot, Eastleigh	Foster Yeoman	SU 461 183
Fareham Rail Depot, Fareham	Hanson Aggregates	SU 570 063

Kent

Sevington, Waterbrook, Ashford	Foster Yeoman	TR 035 402
Allington Rail Sidings, Allington	Hanson	TQ 574 157
Hothfield Works, Westwell	Tarmac	TQ 598 146

<i>Conningbrook, Ashford</i>	<i>Brett Aggregates Ltd</i>	<i>TR 031 437</i>
------------------------------	-----------------------------	-------------------

Milton Keynes

Full Goods Yard, Bletchley Station	CEMEX UK	SP 869 338
------------------------------------	----------	------------

Oxfordshire

Sutton Courtenay	Hanson Aggregates	SP 512 935
Banbury	Lafarge Aggregates	SP 461 419

Banbury	Tarmac Ltd	SP 461 419
Kidlington	-	SP 119 503

Surrey

British Rail Down Yard, Woking	Day Aggregates	TQ 001 582
Salfords Rail Aggregate Depot	Day Aggregates	TQ 285 459

West Sussex

Tinsley Goods Yard, Crawley	CEMEX/RMC Readymix Home Coun	TQ 287 390
Railway sidings, Chichester	Dudman Aggregates Ltd	SU852 104
Crawley Goods Yard, Crawley	Foster Yeoman Ltd	TQ 286 389
Ardingly Rail Depot, Ardingly	Hanson Aggregates	TQ 339 276

Sites Producing Recycled Aggregates

Berkshire Unitaries

Old Stocks Farm, Aldermaston	Aldermaston Recycling	SU 596 632
Copyhold Farm, Curridge	R K Eggleton	SU 491 728
Field Farm, Burghfield	Hanson Recycling/John Mould Ltd	SU 676 703
Barton Court, Kintbury	Hills Mineral & Waste	SU 380 681
Rosary Farm, Poyle	Lanz	TQ 037 765
Hythe End Road, Wraysbury	Charles Morris	TQ 016 725
Island Road, Reading	John Mould Ltd	SU 710 706
Longford II, Poyle	RMC	TQ 038 763
St George's Lane, Ascot	Shorts Timber Service	SU 927 685
Whitehouse Farm, Aldermaston	John Stacy & Sons	SU 608 267
Lower Farm, Greenham	Tarmac	SU 499 661

Sutton Lane, Colnbrook	Biffa	TQ 024 792
Theale	Foster Yeoman	SU 635 706
Heron's Nest, Sheffield Bottom	Alan Hadley Ltd	SU 663 698
Horwoods Yard, Maidenhead	D D Horwood	SU 895 806
Reading Quarry, Pingewood	John Mould Ltd	SU 686 596
Slough Goods Yard, Slough	Simpson Environmental Services	SU 968 805
Priors Way, Maidenhead	Tanks & Drums Ltd	SU 898 787

Buckinghamshire

Hyde Farm, Beaconsfield	Aggregate Industries	SU 965 894
Little Marlow	Lafarge Aggregates	SU 871 880
All Souls Farm, Wexham	Tarmac Southern	TQ 000 820

East Sussex and Brighton & Hove

French & Son, Hastings	R French & Son Ltd	TQ 979 107
Gambles Yard, Newhaven	FL Gamble & Sons Ltd	TQ 447 019
Haulaway Ltd, Hailsham	Haulaway Ltd	TQ 585 093
Moulsecroomb Way, Brighton	Kingspan Waste Recycling Ltd	TQ 332 075

Canto Containers 2 Phoenix Place, Lewes	Kingston Transport (Sussex) Ltd	TQ 417 104
Unit 25, Cliffe Industrial Estate	Kingston Transport (Sussex) Ltd	TQ 426 094
Machine Bottom Quarry	MDJ Light Bros Ltd	TQ 420 100
Cophall Wood, nr Polegate	PJ Mini Skip Hire/Baker Beale	TQ 578 065
AM Plant & Skip Hire, Hazelbank, nr Maresfield	AG Mitchell	TQ 463 255
Serco Depot, Eastbourne	Serco Depot	TQ 613 998
SITA WTS Potts Marsh, Eastbourne	SITA Wastecare Ltd	TQ 636 041
Skip It, Gate 5 Basin Road South, Portslade	Skip It Containers	TQ 258 047

Hampshire, Portsmouth and Southampton

Yokesford Hill, Romsey	Ace Liftaway	SU 358 239
New Farm, South Warnborough	Basingstoke Skip Hire	SU 726 451
Eversley Haulage Park, Eversley	Collard	SU 789 591
Calf Lane, Rye Common	Comley	SU 773 499
Thruxton Airfield, Thruxton	Earthline	SU 277 151
Tower View, Sway	George Farwell	SU 264 977
Eastleigh Rail Sidings, Eastleigh	Foster Yeoman	SU 458 186
Micheldever Depot, Micheldever	Foster Yeoman	SU 517 436
Willments Yard, Southampton	J&W Recycling	SU 435 119
Farlington Redoubt, Portsmouth/Havant	Lift & Shift Skip Hire	SU 686 064
Bury Farm, Marchwood	Marchwood Aggregates	SU 377 110
Manor Farm, Pennington	New Milton Sand & Ballast	SZ 312 930
Lee Lane, Nursling	Raymond Brown	SU 360 171
Rookery Farm, Swanwick	Raymond Brown	SU 512 092
Ridge Quarry, Romsey	Raymond Brown	SU 339 184
Warren Farm, Fareham	Recycled Rock & Aggregate	SU 602 066
Cherque Farm, Gosport	Cemex Materials Ltd - South East	SU 574 006
Bleak Hill, Somerley	Cemex Materials Ltd - South East	SU 131 108
Wallington Depot, Fareham	SITA	SU 592 070
Empress Road, Southampton	SITA	SU 427 132
Quartremaine Road, Portsmouth	SITA	SU 667 028
Blashford Quarry, Ellingham	Tarmac	SU 146 075
Hollybush Lane, Aldershot	Taurus	SU 884 523
Brickworks/Clay Pit, Selborne	T J Landfill	SU 767 342
New Lane, Havant	Wessex construction	SU 721 066

<i>Blackmoor Estate, Blackmoor</i>	<i>Williams of Bordon</i>	<i>SU 784 323</i>
<i>Star Hill Sawmills, Hartley Wintney</i>	<i>Biffa Waste Management</i>	<i>SU 784 586</i>
<i>CWM Hollybush Lane, Aldershot</i>	<i>Chambers Waste Management</i>	<i>SU 884 523</i>
<i>Beacon Hill, Ewshot</i>	<i>Cranston Bros</i>	<i>SU 820 501</i>
<i>Butser Hill Lime Quarry, Buriton</i>	<i>George Ewen</i>	<i>SU 726 203</i>
<i>Ambervale Farm, Sway</i>	<i>George Farwell</i>	<i>SZ 302 971</i>
<i>Eastleigh Rail Depot, Eastleigh</i>	<i>Foster Yeoman</i>	<i>SU 461 183</i>
<i>Bunny Lane, Timsbury</i>	<i>SITA</i>	<i>SU 354 252</i>
<i>Lode Farm, Kingsley</i>	<i>Tarmac</i>	<i>SU 780 378</i>
<i>Bury Farm, Curdridge</i>	<i>Wessex Demolition</i>	<i>SU 524 112</i>

Isle of Wight

Blackwater Quarry	Bardon Vectis	SZ 510 876
Knighton Sand Pit	Knighton Sand Ltd	SZ 574 865

Kent

Conningbrook Quarry, Ashford	Brett Aggregates Ltd	TR 031 437
Faversham Quarry	Brett Aggregates Ltd	TR 014 626
Ramsgate New Port	Brett Aggregates Ltd	TR 379 639
Ridham Dock	Brett Aggregates Ltd	TR 921 682
Shelford Farm, nr Canterbury	Brett Waste Management	TR 163 601
Clubbs Marine Terminal, Gravesend	J Clubb Ltd	TQ 568 174
Ridham Dock Road, Iwade	Countrystyle Recycling	TQ 592 169
Allington Depot	Hanson Aggregates	TQ 744 579
Squerries Sand Pit	Lafarge Roofing	TQ 434 543
Manor Way, Swanscombe	London & Kent Recycling Ltd	TQ 607 749
Church Marsh, Sittingbourne	Milton Precast	TQ 591 165
West Hythe Ballast Pit, West Hythe	Nickolls Quarries Ltd	TR 130 331
Beechbrook Farm	Ovenden Earthmoving Co Ltd	TQ 981 463
Stonelees Golf Course	Ovenden Earthmoving Co Ltd	TR 335 626
Pinden Quarry, Longfield	Pinden Plant & Processing Ltd	TQ 559 169
Tilmanstone Works, Eythorne	R H Ovenden Ltd	TR 625 150
Preston Depot, Canterbury	Ringway Highway Services	TR 017 604
Red Lion Wharf, Northfleet	Stema Shipping (UK) Ltd	TQ 617 750
Hothfield Works	Tarmac Southern Ltd	TQ 981 462
Snodland (Ham Hill)	Tarmac Southern Ltd	TQ 693 610
Sheerness Steel Works	Thamesteel Ltd	TQ 913 748
The Dump, Margate	Thanet Waste Management	TR 339 674

Medway

Unit 15, Knight Road, Rochester	Mid Kent Recycling	TQ 732 685
Clipper Close, Medway City Estate	Wastenot Recycling Ltd	TQ 754 694

Milton Keynes

Broughton Barn Quarry, Milton Keynes	Ian Smith Construction	SP 098 064
--------------------------------------	------------------------	------------

Oxfordshire

Childrey Quarry	Childrey Quarry	SP 372 869
Prospect Farm, Chilton	Chilton Waste Services	SU 499 852
Dix Pit, Stanton Harcourt	Controlled Reclamation Ltd	SP 409 044
Ewelme Landfill No 2	Grundon	SU 647 908
Appleford Sidings, Sutton Courtenay Pit	Hanson Quarry Prod's Europe Ltd	SU 517 934
Worton Rectory Farm, Cassington	M&M Skip Hire Ltd	SP 476 113
Aasvogel, Grove Technology Park, Wantage	David McDowell Ltd	SU 385 895
New Wintles Farm, Eynsham	McKenna Plant Hire (Oxford) Ltd	SP 431 107
Lakeside Industrial Park Standlake	Micks Skips Ltd	SP 384 044
Sandfields Farm, Chipping Norton	KJ Millard Plant Hire & Sales Ltd	SP 322 294
Didcot 'A' Power Station	RWE npower	SU 510 920
Slape Hill Quarry, Glympton	John Sheehan (Oxford) Ltd	SP 422 196
Gill Mill Quarry, Ducklington	Smith & Sons (Bletchington) Ltd	SP 372 073
Worsham Quarry	Taylors Transport Ltd	SP 298 102
<i>Old Brickworks, Bletchington</i>	<i>MR Miller (Plant Hire)</i>	<i>SP 518 158</i>
<i>Overthorpe Recycling Centre, Banbury</i>	<i>Grundon</i>	<i>SP 470 401</i>
<i>Wicklesham Quarry, Faringdon</i>	<i>Grundon</i>	<i>SU 293 941</i>
<i>Playhatch Quarry, Sonning</i>	<i>Hanson Quarry Prod's Europe Ltd</i>	<i>SU 740 765</i>
<i>Tubney Wood Quarry, Tubney</i>	<i>Hills Minerals & Waste Ltd</i>	<i>SP 448 007</i>
<i>Ferris Hill Farm, Hook Norton</i>	<i>NL Mathews</i>	<i>SP 355 350</i>

Surrey

Westfield Road, Slyfield Indus Estate	Chambers Waste Management	TQ 003 523
Weylands STW, Hersham	General Demolition	TQ 125 656
Little Orchard Farm, Hookwood	Britannia Crest (Ray Foss)	TQ 259 445
Plough Indus Estate, Leatherhead	D & E Roberts	TQ 164 573
Home Farm, Shepperton	Shepperton Aggregates	TQ 056 688

West Sussex

Holmbush Farm Landfill Site, Faygate	PJ Brown Ltd	TQ 235 351
Burleigh Oaks Farm, Turners Hill	Cox Skips	TQ 346 364
Valdoe Quarry, Goodwood	Dudman Aggregates Ltd	SU 878 084
Angells Sand Pit, Sullington	FL Gamble & Sons Ltd	TQ 099 140
Eartham Gravel Pits, Boxgrove	FL Gamble & Sons Ltd	SU 928 082
Newtimber Chalk Pit, Newtimber	Robins of Herstmonceux	TQ 277 137
Churchill Industrial Estate, Lancing	Sussex Waste Recycling	TQ 174 039
Portfield Concrete Works, Oving	Tarmac Southern Ltd	SU 881 053
Adsdean Landfill, Funtington	Wessex Construction & Plant Hire	SU 797 091
<i>Pendean Quarry, Pendean</i>	<i>FL Gamble & Sons Ltd</i>	<i>SU 890 200</i>
<i>Slindon Bottom Gravel Pit, Slindon</i>	<i>FL Gamble & Sons Ltd</i>	<i>SU 950 082</i>

Aggregates Monitoring Report 2004

**Published July 2006 by the South East
England Regional Assembly**

**South East England Regional Assembly
Berkeley House, Cross Lanes,
Guildford, GU1 1UN
T: 01483 555200
F: 01483 555250
E: secretariat@southeast-ra.gov.uk**

ISBN 1-904664-28-8

£20 (incl.VAT)