



NORTH WEST
REGIONAL AGGREGATES
WORKING PARTY

ANNUAL REPORT 2005

INCORPORATING 2004 AGGREGATE
MONITORING STATISTICS

CESHIRE
COUNTY COUNCIL

Alan S Thornley
County Planning Officer

Environmental Planning Service
Cheshire County Council
Backford Hall
CHESTER
CH1 6PZ

For further Information **Please Contact:**

Mr Andrew Farrow
Secretary NWRAWP
Environmental Planning Service
Tel: (01244) 603145
E-mail: andrew.farrow@cheshire.gov.uk

FEBRUARY 2006

Document No: - 573

ISSN: 0906763576

This document is available in large print.





CONTENTS

Page

| | | |
|-----|--|----|
| 1. | INTRODUCTION | 6 |
| 2. | MEMBERSHIP CHANGES | 6 |
| 3. | MEETINGS | 7 |
| 4. | RESULTS OF THE ANNUAL MONITORING OF PRIMARY AGGREGATE PRODUCTION AND RESERVES AM04 | 9 |
| 5. | MONITORING OF LANDBANKS | 14 |
| 6. | MARINE SAND LANDINGS FROM OFF THE NORTH WEST COAST | 18 |
| 7. | SECONDARY AGGREGATES | 21 |
| 8. | MONITORING OF PLANNING APPLICATIONS | 24 |
| 9. | EVENTS OF INTEREST | 24 |
| 10. | MONITORING OF DEVELOPMENT PLANS | 27 |
| 11. | ENVIRONMENT ACT 1995: REVIEW OF MINERAL PLANNING PERMISSIONS | 28 |

TABLES

| | | |
|----------|---|----|
| Table 1 | Monitoring of Primary Aggregate Production - North West Region 1992-2004 | 11 |
| Table 2 | Monitoring of Primary Aggregate Permitted Reserves - North West Region 1992-2004 | 12 |
| Table 3A | Monitoring of Landbanks - North West Region 2004, Method A | 16 |
| Table 3B | Monitoring of Landbanks - North West Region 2004, Method B | 17 |
| Table 4 | Production of Marine Landed Sand and Gravel from off the North West Coast 1992-2004 | 19 |
| Table 5 | Secondary Aggregate Reuse and Reserves 1998 -2004 | 23 |
| Table 6 | Monitoring of Aggregate Planning Applications - North West Region 1/1/2004-31/12/2004 Summary | 24 |
| Table 7 | Environment Act 1995: Summary of Aggregate Mineral Review Permissions | 28 |

FIGURES

Page

| | | |
|----------|---|----|
| Figure 1 | Aggregate Production in the North West 2004 | 13 |
| Figure 2 | Trends in Primary Aggregate Production in the North West 1992-2004 | 14 |
| Figure 3 | Aggregate Production against MPG 6 and Revised Guidelines for Aggregate Provision in the North West 1992-2004 | 15 |

MAPS

| | | |
|-------|--|----|
| Map 1 | North West Region | 5 |
| Map 2 | Licensed Dredging Areas: North West Coastal Waters | 20 |

APPENDICES

| | | |
|---|--|----|
| 1 | Terms of Reference - North West Regional Aggregate Working Party | 29 |
| 2 | Table A: Monitoring of Aggregate Mineral Planning Applications. Final Decisions made 1/1/2004 – 31/12/2004 | 30 |
| | Table B: Aggregate Mineral Planning Applications “in hand” at 1/4/2005 | 32 |
| 3 | Development Plans in the North West Region Current progress on preparation & review | 34 |
| 4 | Sites Included in AM2004 Aggregate Minerals Survey | 36 |
| 5 | National and Regional Guidelines for Aggregate Provision in England 2001 - 2016 | 41 |
| 6 | DCLG (formerly ODPM) Update | 42 |
| 7 | Recent Working Party Publications | 43 |





NORTH WEST REGIONAL AGGREGATES WORKING PARTY - MEMBERSHIP

Chairman

Mr A S Thornley Cheshire County Council

Technical Secretary

Mr A N Farrow Cheshire County Council

Technical Assistants

Mr A I Hoyle Cheshire County Council

Mr G Williams Cheshire County Council

Local Government Representatives

Dr A Jemmett Environmental Advisory Service

Mr M Hudson Lancashire County Council

Mr R Evans Cumbria County Council

Mr N Henderson Lake District National Park Authority

Mr D Ringwood Warrington Borough Council

Mr K Patrick Greater Manchester Geological Unit

Industry Representatives

Mr N Brown British Marine Aggregates Producers Association (BMAPA)

Mr C Dobbs Tarmac Central Ltd

Mr T Brown Hanson Aggregates

Mr K Palmer NFDC

Mr D T Pollock Quarry Products Association

Mr P Huxtable British Aggregates Association

Mr N Horsley WBB Minerals

Mr G Storey Aggregate Industries

Ms J Davies Cemex RMC (UK) Ltd

Central Government Representatives

Mr C Duffel Highways Agency (Manchester)

Mr G Jones Government Office North West

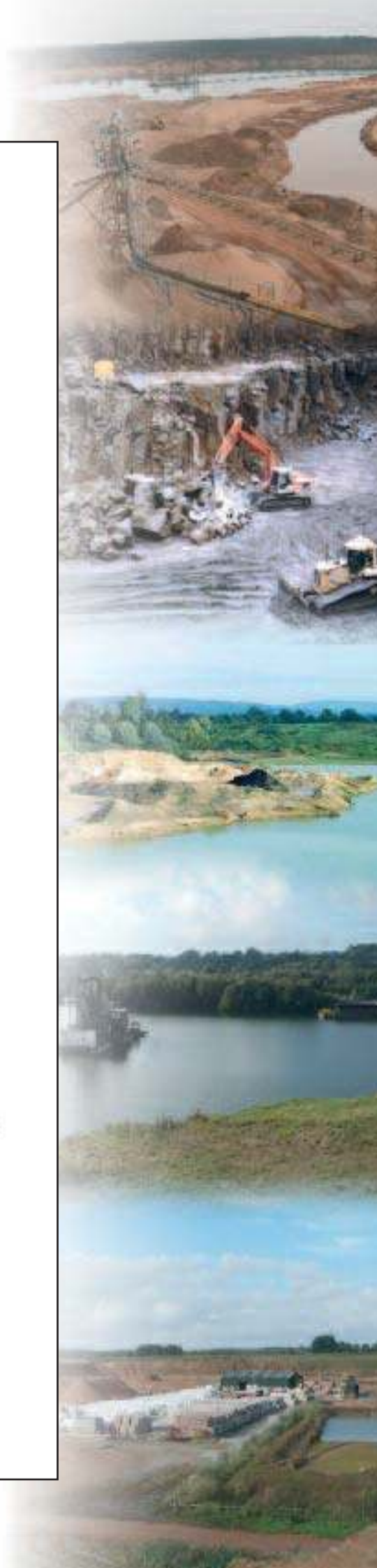
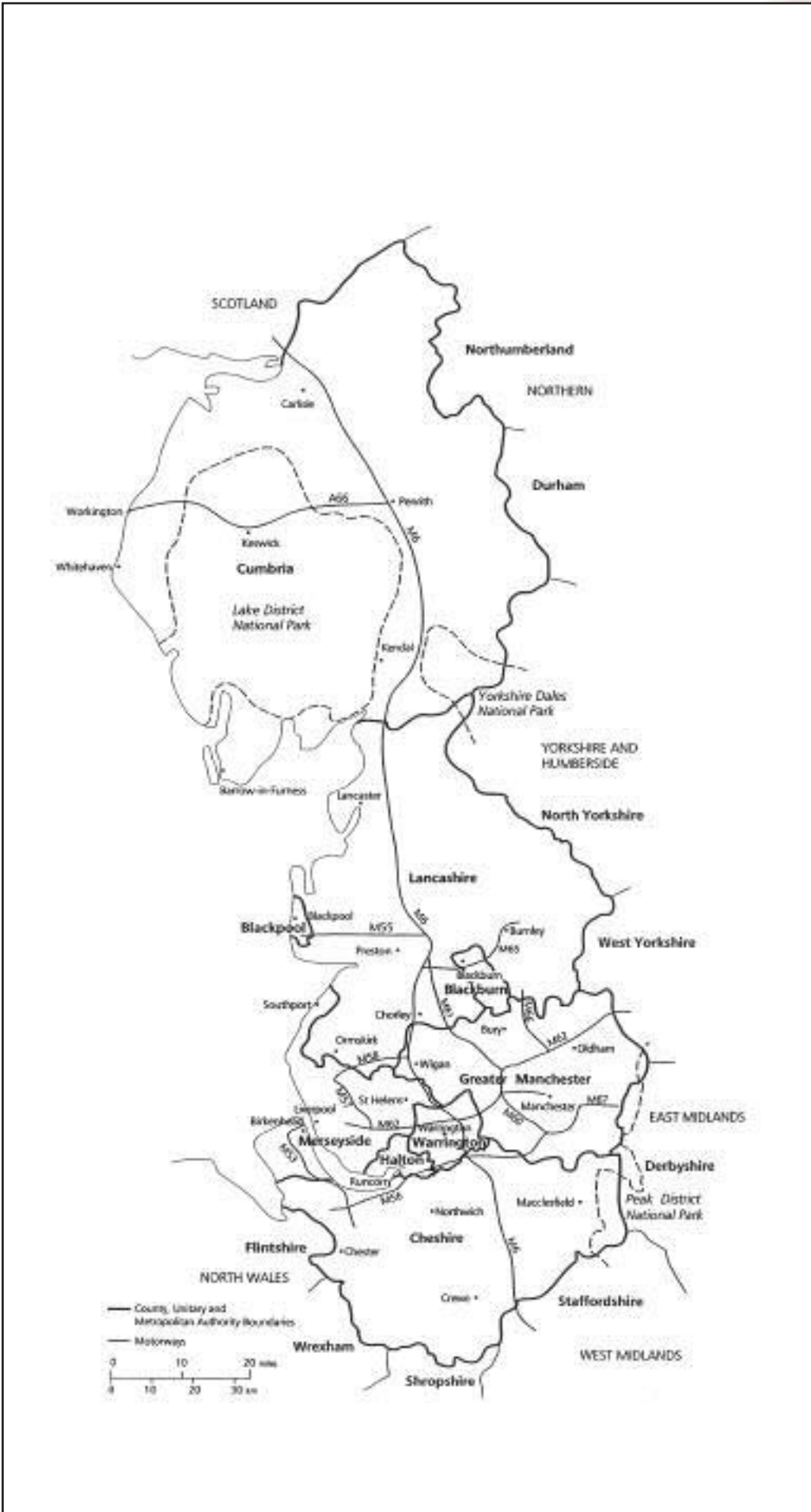
Mr B Marker DCLG (formerly ODPM)

Mr A Ashall North West Regional Assembly

Other

Mr J Gibbons North Wales Regional Aggregates Working Party

Map 1
 North West Aggregates Working Party - North West Region





1. INTRODUCTION

- 1.1 The North West Regional Aggregates Working Party (NWRAMP) is one of a number of similar working parties throughout England and Wales established in the 1970s in order to collect data on the production of aggregates. The NWRAMP is comprised of the counties of Lancashire, Cumbria (including the Lake District National Park) and Cheshire; the Metropolitan Boroughs of Greater Manchester and Merseyside along with the Unitary Authorities of Blackburn with Darwen, Blackpool, Halton and Warrington. Those parts of the Peak District National Park which fall within Cheshire and Greater Manchester are represented by the East Midlands Regional Aggregates Working Party and those parts of the Yorkshire Dales National Park which fall within Cumbria are represented by the Yorkshire and Humberside Regional Aggregates Working Party.
- 1.2 Membership is drawn from the constituent mineral planning authorities (MPAs), central government departments and representatives from the extractive industry. The metropolitan districts in Greater Manchester are represented by the Greater Manchester Geological Unit (GMGU), which provides mineral planning services to the ten Metropolitan Borough Councils (MBC). The five Merseyside authorities are represented on mineral planning issues by the Environmental Advisory Service (EAS) which regularly provides professional planning advice for Sefton, St Helens and Knowsley MBCs on issues relating to the environment including mineral extraction and waste disposal. Lancashire County Council acts for the authorities of Blackpool and Blackburn with Darwen on minerals policy issues. Cumbria acts for the Lake District National Park Authority in respect of the work undertaken by NWRAMP. The authorities of Halton and Warrington undertake their own mineral duties.
- 1.3 The terms of reference of the working party are set out in Appendix 1.
- 1.4 The year 2005 report is the fourteenth annual report to have been prepared and provides information on land and marine won aggregate production and reserves throughout the North West region for the preceding year. Information relating to the progress of development plans, planning applications, construction industry activity, secondary aggregates and mineral review applications is also provided for the period 1 January 2004 to the 31 December 2004. Details on current and future research projects associated with aggregates, which are of a regional significance, are also included.

2. MEMBERSHIP CHANGES

- 2.1 The current membership of the NWRAMP is listed on page 4. Since the 1 January 2005 the following membership changes have taken place.
- 2.2 Mr Andrew Ashall replaces Mr Tim Hill as representative of the North West Regional Assembly.
- 2.3 Mr Richard Evans replaces Mr Phil Gordon as local government representative for Cumbria County Council.
- 2.4 Mr Gary Williams has joined the NWRAMP as technical assistant.

3. MEETINGS

- 3.1 The Working Party has met once since the publication of the Annual Report 2004, on 23rd September 2005. The main topic of the meeting was to discuss the Working Party's response to the Office of the Deputy Prime Minister's Consultation Paper on Annexes to Minerals Policy Statement 1 (MPS1). The main issues from the discussion are summarised below:

Issues discussed on 23rd September 2005

Annexes to Minerals Policy Statement 1

- 3.2 The Secretary introduced MPS 1 Annexes and stated that Annex One and Three were of concern to the NWRAMP in relation to Aggregates and Natural Building and Roofing Stone. The Working Party was asked for general comments on each annex and then dealt with the specific areas. The general comments that were raised are summarised below.

Annex One – Aggregates

- 3.3 There was a general discussion about the format and principles of Annex One and this was followed by a discussion of the specific details of the document namely the aim and objectives of policy and the overall approach of the annex.

General Comments

- Although the document states that the Annexes and MPS1 have equal status, the relationship between them requires some clarity.
- The document is very hard to comment on when read in isolation.
- The NWRAMP questions whether the MPS1 annexes are an improvement to MPG6 in terms of guidance to develop policy and advise the minerals industry on general objectives for aggregate provision.
- The NWRAMP requests some guidance on the supply and processing of secondary aggregate.

Specific Comments

The main points that were raised in the discussion about Annex One were as follows:

- The NWRAMP requests a direct prescription of policy.
- The NWRAMP would welcome some reference to the promotion of production methods that utilise secondary and recycled aggregates.
- Reference with regard to the need and use of minerals and the contribution of the minerals industry to the economy is requested.
- The NWRAMP calls for some guidance for Metropolitan Boroughs in terms of applying the landbank policy.

Annex Three – Natural Building and Roofing Stone

- 3.4 The discussion about Annex Three followed the same format as Annex One.
- 3.5 The NWRAMP supports the prescriptive and concise style of Annex 3. The points that came out of the discussion were brief and only a few comments were made about annex three. The comments focussed on some wording and terminology used within the annex, best practice examples for some of the requirements specified and the scope of *de minimis* development within Minerals Planning.
- 3.6 The comments and requested actions from the NWRAMP during this meeting were sent to the ODPM on 31st October 2005.





Freedom of Information

3.7 Nick Horsley reported to the group in Duncan Pollock's absence.

- The QPA has received legal advice that the NWRAMP AM04 falls foul of the FOI Act
- The QPA and ODPM are currently revising a way forward and will send a letter to the RAWPs shortly
- The ODPM will encourage a swift reply from operators on the AM04
- It is unfortunate that we are dealing with confidential information however FOI will have to take its course.

Regional Spatial Strategy

3.8 Andrew Ashall updated on the development on RSS

- Currently undergoing a revision of policies
- In essence there are three policies in relation to Sustainable Waste that have direct ties with the RAWP
- Timetable – There will be three documents available for interim consultation from 17th October to 25th November 2005. The documents will only be available on the website and paper copies (if required) will have to be requested from the NWRA.
- The group advised that the consultation method could have shortcomings in transparency. Andrew took that on board and said he would report this back to the NWRA.
- Expected to submit the RSS to Government Office North West on 13th January 2006

Survey of Arisings and Use of Construction, Demolition and Excavation Waste, Quarry Waste and Dredging Waste as aggregate in Wales in 2003 by Smiths Gore

3.9 Gary Williams reported the main findings of the survey to the group.

The main findings are as follows:

- Estimate for total C&D waste is 5.22 million tonnes, this a 4% increase from 2001
- Estimate for recycled aggregate and soil has risen from 1.79 mt – 2001 to 1.88 mt in 2003
- Arisings spread on Registered Exempt Sites has increased from 1.28mt – 2001 to 2.33 mt in 2003
- The amount of C&D waste disposed of at landfill sites has increased from 0.35 mt to 0.56mt
- Appears to be limited scope for further reuse of the waste materials produced. This is due to further processing requirements. The landfill directive may result in more waste being sorted and segregated and reused
- A factor that may partially or wholly account for an increase in the volume of waste materials is the introduction of Aggregates Levy in 2002.

Solving the problem of retrieving Highways Agency Information on Road Planings as a Secondary Aggregate

3.10 The meeting concluded with a discussion about solving the problem of retrieving Highways Agency information on road planings as a secondary aggregate.

3.11 It was agreed that the way forward would be to write to the Highways Agency and seek clarification of what records they hold on road planings.

4. RESULTS OF THE ANNUAL MONITORING OF PRIMARY AGGREGATE PRODUCTION AND RESERVES AM2004

- 4.1 From October 2005 to February 2006 the NWRWAP, in conjunction with its constituent Mineral Planning Authorities (MPAs), carried out an annual survey of aggregate supplies and reserves in the North West for the year 2004.
- 4.2 Tables 1 and 2 provide information on the production of primary land won aggregates and reserves in the North West. Figures for the previous twelve years are also provided for comparison. Results from the Unitary Authorities of Halton and Warrington have been included with the figures for Greater Manchester and Merseyside and those for Blackpool and Blackburn with Darwen have been included within Lancashire. Figure 1 illustrates the trends in primary aggregate production throughout the region for the year 2004 and Figure 2 illustrates the trends in primary aggregate production in the North West since 1992.

Total aggregate production

- 4.3 Total aggregate production declined again in 2004 to the lowest recorded figure for the past 12 years. This continued the general trend of declining total aggregate production since 1997, with the exception of the production levels for the year 2002 which had showed a very marginal increase on previous years. Total aggregate production declined by approximately 2% from 13.18 million tonnes (mt) in 2003 to 12.89 mt in 2004.

Crushed rock production

- 4.4 The production of crushed rock increased by approximately 1.5% from 9.32 mt in 2003 to 9.45mt in 2004. This figure is still generally below past production levels, and is the lowest production figure of the last 12 years, with the exception of the 2003 production levels. There was a reduction in the production of sandstone and igneous rock in Lancashire between 2003 and 2004 of 0.3 mt, however Greater Manchester showed a slight increase in their sandstone and igneous production, with both Lancashire and Cumbria recording increases in their Limestone production levels.

Sand and gravel production

- 4.5 Sand and gravel production decreased by approximately 11% on the previous years figures, decreasing from 3.86 mt in 2003 to 3.44 mt in 2004. Again, this figure is the lowest recorded sand and gravel production figure of the last 12 years. Moreover, land won sand and gravel production reduced from 3.36 mt in 2003 to 2.84 mt in 2004, a reduction of 15.5%. The lowest figure recorded in recent years.

Total aggregate reserves

- 4.6 Total aggregate reserves increased by 1.7 mt between 2003 (356.94 mt) and 2004 (358.64 mt). This equates to approximately a 0.47% increase on last year's figures, and is largely as a result of significant releases of crushed rock reserves in Lancashire. This compares with a 5% reduction between 2002 and 2003.
- 4.7 More detailed explanation concerning the background to these figures and further information on County production and reserves in general, can be seen in Section 9: Events of Interest.





Commentary on trends

- 4.8 Whilst it is not possible to provide a definitive statement into the reasons behind the declining primary aggregate production figures in the North West, the following points can be made:
- 4.9 The introduction of the Aggregates Levy in 2002 is recognised as being a potential driver to changes in primary aggregate production trends.
- i) The Aggregates Levy was introduced in April 2002, initially as a two-year pilot scheme, to provide funds to tackle a wide range of problems in areas affected by the extraction of aggregates. Currently the Aggregates Levy is £1.60 for each tonne of primary aggregate supplied. This has encouraged some substitution of primary materials, as secondary and recycled materials are exempt from taxation. Research has shown that overall demand for aggregates is relatively inelastic, that is, overall demand does not generally fluctuate according to price, as in order to function, the construction industry must have aggregates. It is therefore possible that recent declines in primary aggregate productions are as a result of the substitution with secondaries. It is anticipated that the market for secondary aggregates will continue to grow and impact upon primary aggregate production;
 - ii) It is also possible that reductions in primary aggregate production are as a direct result of the absence of major construction industry activity in the North West region, or that demand for primary aggregates is being met through supplies from outside of the region.

Table 1: Monitoring of Primary Aggregate Production/Sales – North West Region 1992-2004 (million tonnes)

| | (AM92) | (AM93) | (AM94) | (AM95) | (AM96) | (AM97) | (AM98) | (AM99) | (AM00) | (AM01) | (AM02) | (AM03) | (AM04) |
|---|-------------|-------------|--------------|--------------|--------------|--------------|--------------|--------------|--------------|--------------|-------------|--------------|--------------|
| 1. LIMESTONE⁽¹⁾ | | | | | | | | | | | | | |
| Cumbria | 4.2 | 4.1 | 4.8 | 3.8 | 3.2 | 3.5 | 3.2 | 3.4 | 3.4 | 3.0 | 2.9 | 2.6 | 2.8 |
| Lancashire | 3.8 | 3.7 | 4.3 | 3.5 | 2.9 | 3.0 | 2.7 | 2.6 | 2.7 | 2.6 | 2.7 | 2.6 | 2.7 |
| TOTAL – LIMESTONE | 8.0 | 7.8 | 9.1 | 7.3 | 6.1 | 6.5 | 5.9 | 6.0 | 6.1 | 5.6 | 5.6 | 5.2 | 5.5 |
| 2. SANDSTONE & IGNEOUS ROCK | | | | | | | | | | | | | |
| Cumbria ⁽²⁾ | 0.7 | 0.6 | 0.8 | 0.8 | 0.7 | 0.7 | 0.8 | 0.8 | 1.0 | 1.1 | 1.1 | 1.1 | 1.1 |
| Lancashire | 1.6 | 2.3 | 2.7 | 2.8 | 2.63 | 2.17 | 2.1 | 1.8 | 1.7 | 1.9 | 2.2 | 1.6 | 1.3 |
| Cheshire ^{(3) (4)} | 0.3 | 0.6 | 1.0 | 0.6 | 0.44 | 0.29 | 0.1 | 0.1 | 0.1 | 0.1 | 0.01 | 0.02 | 0.05 |
| GM/M'side/Halton/Warrington ⁽⁵⁾ | 1.6 | 2.0 | 1.8 | 1.8 | 1.6 | 1.9 | 1.9 | 1.8 | 1.4 | 1.4 | 1.3 | 1.4 | 1.5 |
| TOTAL – SANDSTONE & IGNEOUS ROCK | 4.2 | 5.5 | 6.3 | 6.0 | 5.37 | 5.06 | 4.85 | 4.58 | 4.2 | 4.5 | 4.6 | 4.12 | 3.95 |
| TOTAL – CRUSHED ROCK | 12.2 | 13.3 | 15.4 | 13.3 | 11.47 | 11.56 | 10.75 | 10.58 | 10.3 | 10.1 | 10.2 | 9.32 | 9.45 |
| 3. SAND & GRAVEL | | | | | | | | | | | | | |
| Cumbria ⁽²⁾ | 0.8 | 0.9 | 1.1 | 0.9 | 0.8 | 0.8 | 0.9 | 0.9 | 0.8 | 0.7 | 0.9 | 1.0 | 0.8 |
| Lancashire | 0.8 | 0.8 | 0.77 | 0.8 | 0.8 | 0.91 | 0.66 | 0.48 | 0.34 | 0.47 | 0.5 | 0.46 | 0.44 |
| Cheshire ^{(3) (4)} | 2.6 | 2.6 | 3.2 | 2.9 | 2.65 | 2.56 | 2.3 | 2.48 | 2.33 | 1.7 | 1.4 | 1.4 | 1.1 |
| GM/M'side/Halton/Warrington ⁽⁵⁾ | 0.45 | 0.28 | 0.48 | 0.33 | 0.26 | 0.45 | 0.3 | 0.24 | 0.31 | 0.23 | 0.4 | 0.5 | 0.5 |
| 4. TOTAL - LAND WON SAND & GRAVEL | 4.65 | 4.58 | 5.55 | 4.93 | 4.51 | 4.72 | 4.16 | 4.1 | 3.78 | 3.1 | 3.2 | 3.36 | 2.84 |
| 5. MARINE DREDGED AGGREGATE | | | | | | | | | | | | | |
| Cumbria | - | - | - | - | - | - | - | - | - | 0.03 | 0.042 | 0.043 | 0.02 |
| Lancashire | - | - | - | - | - | - | - | 0.05 | 0.07 | 0.18 | 0.13 | 0.11 | 0.1 |
| GM/M'side/Halton/Warrington | 0.25 | 0.22 | 0.22 | 0.22 | 0.25 | 0.25 | 0.23 | 0.24 | 0.22 | 0.25 | 0.33 | 0.32 | 0.48 |
| TOTAL MARINE SAND & GRAVEL | 0.25 | 0.22 | 0.22 | 0.22 | 0.25 | 0.25 | 0.23 | 0.29 | 0.29 | 0.46 | 0.50 | 0.47 | 0.6 |
| 6. HARBOUR AUTHORITIES SAND AND GRAVEL | | | | | | | | | | | | | |
| Cumbria | - | - | - | - | - | - | - | - | - | - | 0.05 | 0.03 | - |
| TOTAL SAND & GRAVEL | 4.9 | 4.8 | 5.77 | 5.15 | 4.76 | 4.97 | 4.39 | 4.34 | 4.07 | 3.56 | 3.8 | 3.86 | 3.44 |
| TOTAL AGGREGATE PRODUCTION | 17.1 | 18.1 | 21.17 | 18.45 | 16.23 | 16.53 | 15.14 | 14.92 | 14.37 | 13.66 | 14.0 | 13.18 | 12.89 |

- (1) Excludes Limestone used for non-aggregate purposes
- (2) Cumbria figures includes the Lake District National Park
- (3) Prior to 1999 figures included Peak Park within Cheshire
- (4) Prior to 1998 figures include Halton/Warrington
- (5) Prior to 1998 figures exclude Halton/Warrington

Figures may include some estimates by MPAs and totals may not add up due to rounding.

Excludes Borrow Pits

Table 2: Monitoring of Primary Aggregate Permitted Reserves – North West Region 1992-2004 (million tonnes)

| | (AM92) | (AM93) | (AM94) | (AM95) | (AM96) | (AM97) | (AM98) | (AM99) | (AM00) | (AM01) | (AM02) | (AM03) | (AM04) |
|--|--------------|--------------|--------------|--------------|--------------|--------------|---------------------|---------------|--------------|--------------|--------------|---------------|---------------|
| 2. LIMESTONE⁽¹⁾ | | | | | | | | | | | | | |
| Cumbria ⁽²⁾ | 157.6 | 169.0 | 177.6 | 143.9 | 111.7 | 121.9 | 91.7 ⁽³⁾ | 111.8 | 116.7 | 106.0 | 102.0 | 99.2 | 96.1 |
| Lancashire ⁽⁴⁾ | 102.0 | 103.8 | 93.3 | 65.9 | 63.8 | 63.5 | 59.4 | 56.8 | 54.1 | 53.9 | 59.3 | 57.5 | 54.7 |
| TOTAL – LIMESTONE | 259.6 | 272.8 | 270.9 | 209.5 | 175.5 | 185.4 | 151.1 | 168.6 | 170.8 | 159.9 | 161.3 | 156.7 | 150.8 |
| 2. SANDSTONE & IGNEOUS ROCK | | | | | | | | | | | | | |
| Cumbria ⁽²⁾ | 63.4 | 76.1 | 77.1 | 76.3 | 69.6 | 67.7 | 66.8 | 67.5 | 66.5 | 65.0 | 63.0 | 62.0 | 60.9 |
| Lancashire | 73.0 | 146.4 | 151.8 | 125.0 | 112.7 | 105.7 | 86.0 | 84.0 | 73.5 | 71.1 | 70.3 | 68.7 | 79.8 |
| Cheshire ^{(5) (6)} | 2.9 | 8.2 | 9.8 | 9.4 | 10.2 | 9.6 | 8.52 | 8.4 | 8.36 | 6.5 | 5.6 | 5.6 | 5.4 |
| GM/M'side/Halton/Warrington ^{(7) (8)} | 33.6 | 9.8 | 27.9 | 34.9 | 35.5 | 32.4 | 35.33 | 32.0 | 30.9 | 30.2 | 27.7 | 22.6 | 22.5 |
| TOTAL – SANDSTONE & IGNEOUS ROCK | 172.9 | 266.2 | 266.6 | 245.6 | 228.0 | 215.4 | 196.65 | 191.9 | 179.3 | 172.8 | 166.6 | 158.9 | 168.4 |
| TOTAL – CRUSHED ROCK | 432.5 | 539.0 | 553.7 | 444.4 | 403.5 | 400.8 | 347.75 | 360.5 | 350.1 | 332.7 | 327.9 | 315.6 | 319.4 |
| 7. SAND & GRAVEL | | | | | | | | | | | | | |
| Cumbria ⁽²⁾ | 18.7 | 17.3 | 15.2 | 14.1 | 12.2 | 13.5 | 12.2 | 12.3 | 11.8 | 12.0 | 12.1 | 11.4 | 10.5 |
| Lancashire | 7.0 | 9.4 | 9.0 | 9.5 | 9.2 | 8.6 | 7.38 | 7.0 | 6.4 | 4.6 | 4.0 | 3.54 | 3.24 |
| Cheshire ⁽⁶⁾ | 27.5 | 27.4 | 29.3 | 28.3 | 25.9 | 24.1 | 21.7 | 19.3 | 17.9 | 24.6 | 23.5 | 19.7 | 19.2 |
| GM/M'side/Halton/Warrington ^{(7) (8)} | 2.8 | 4.0 | 3.2 | 4.1 | 3.8 | 3.5 | 5.36 | 7.67 | 7.1 | 6.7 | 7.7 | 6.7 | 6.3 |
| TOTAL – SAND & GRAVEL | 56.1 | 58.1 | 56.7 | 56.0 | 51.1 | 49.7 | 46.64 | 46.27 | 43.2 | 47.9 | 47.3 | 41.34 | 39.24 |
| TOTAL AGGREGATE RESERVES | 544.7 | 597.1 | 610.4 | 500.4 | 454.6 | 450.5 | 394.39 | 406.77 | 393.3 | 380.6 | 375.2 | 356.94 | 358.64 |

(1) Excludes Limestone used for non-aggregate purposes

(2) Cumbria includes the Lake District National Park

(3) Nil Return for one site

(4) Data up to and including AM94 includes reserves for non-aggregate purposes, including cement.

(5) Prior to 1998 figures include Peak Park within Cheshire.

(6) Prior to 1998 figures include Halton/Warrington.

(7) Prior to 1998 figures exclude Halton/Warrington.

(8) Data combined to preserve confidentiality

Data excludes marine reserves

Figures may include some estimates by MPAs and totals may not add up due to rounding.

Excludes Borrow Pits

FIGURE 1: AGGREGATE PRODUCTION IN THE NORTH WEST 2004

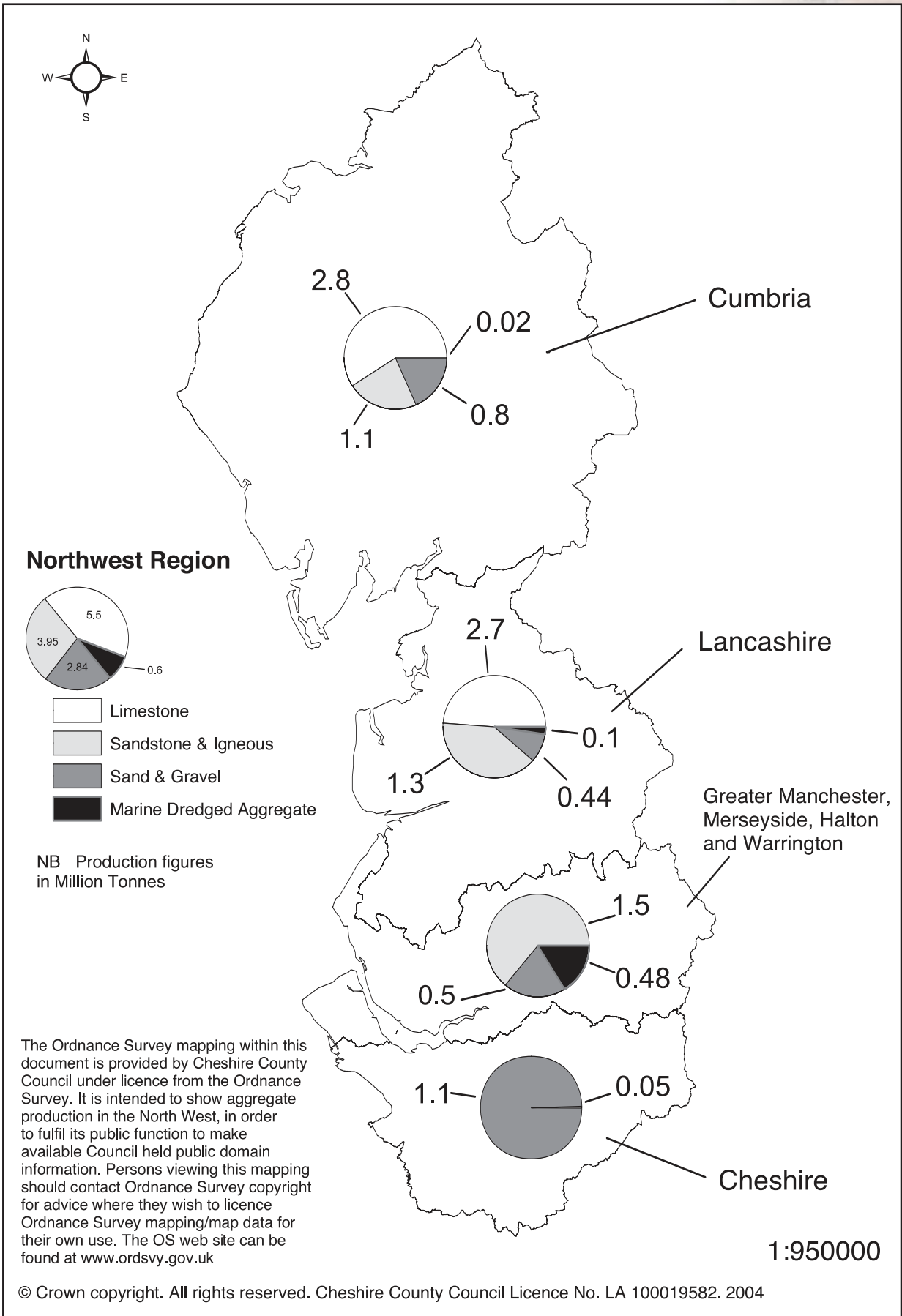
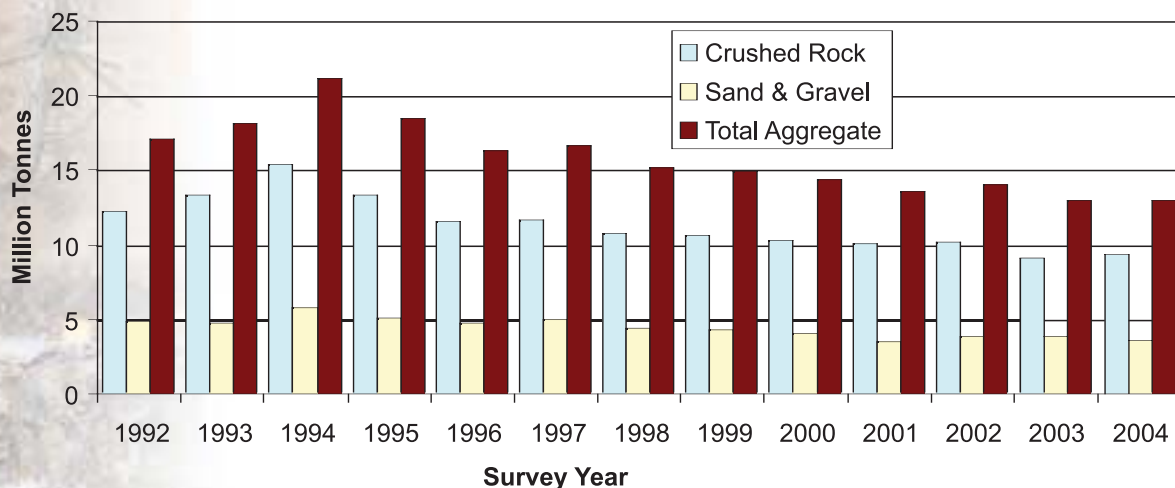


FIGURE 2: TRENDS IN PRIMARY AGGREGATE PRODUCTION IN THE NORTH WEST 1992-2004



5. MONITORING OF LANDBANKS

5.1 Guidance on calculating landbanks is provided in the 1994 edition of MPG6, replacing the guidance set out in the 1985 edition. MPG6 sets out two alternative methods:

- (A) where the Minerals Local Plan (MLP) or Unitary Development Plan (UDP) has been adopted and reflects local apportionment of the regional guidelines, the landbank is calculated using the provisions included in the development plan expressed on an annual basis.

On the 10th June 2003, the ODPM published revised national and regional guidelines for aggregate provision in England. The guidelines replace those in Annex A of MPG 6 published in 1994. The regional guidelines have been broken down to Mineral Planning Authority areas, and have been used to calculate landbanks within Method A (Table 3A). The revised guidelines and sub regional apportionment are included within Appendix 5.

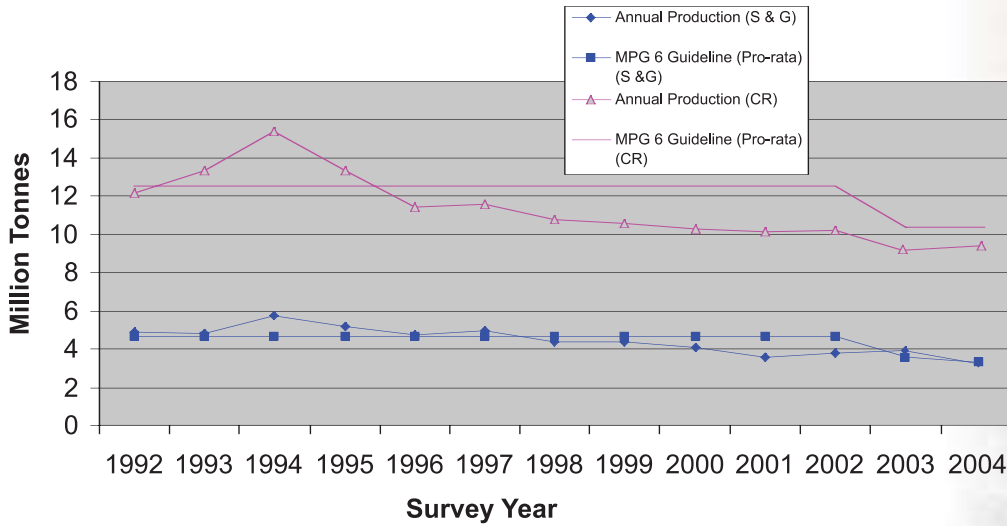
- (B) where the MLP/UDP does not reflect the guidelines, the landbank is calculated using the average of the last three years production figures. This average is divided into the reserves identified in the annual monitoring survey. No allowance is made for forecast increases in demand.

5.2 Both methods have been used to calculate the landbanks for each Authority. The landbanks as at 31/12/2004 calculated by method A are set out in Table 3A and were: - Crushed rock 30.7 years; and Sand & Gravel 11.4 years.

5.3 Table 3B sets out the landbank levels as calculated by method B for the region as at 31/12/2004. The landbanks as at 31/12/2004 were: - Crushed rock 32.9 years and Sand & Gravel 12.3 years.

5.4 Both methods produce regional and individual authority landbank levels that are generally well above the guideline levels in MPG6. The reasons for the healthy landbank position are partly the success of MPG6's policy framework in delivering an adequate supply and partly because a downturn in annual production over the last 5 years (Figure 3) has had the effect of enhancing reserves.

FIGURE 3: AGGREGATE PRODUCTION AGAINST MPG 6 AND REVISED GUIDELINES FOR AGGREGATE PROVISION IN THE NORTH WEST 1992-2004



NB: MPG 6 provision includes Cumbria's apportionment from Northern region.

Aggregate guidelines prior to 2003 are as specified within Annex A of Minerals Planning Guidance Note 6 (MPG6) "Guidelines for Aggregate Provision in England" published in 1994. The aggregate guideline figure for 2003 reflects the revised national and regional guidelines for aggregate provision as published by the ODPM on the 10th June 2003.

**TABLE 3A: MONITORING OF LANDBANKS – NORTH WEST REGION
2004 (METHOD A, PARAGRAPH 5)**

| | 1 Reserves Permitted @ 31/12/04 (Mt) | 2 Annual Average Apportionment (Mt/pa) | 3 Landbank @ 31/12/04 (years) |
|--|---|--|--|
| Limestone, Sandstone & Igneous Rock⁽¹⁾ | | | |
| Cumbria ⁽²⁾ | 156.9 | 4.1 | 38.3 |
| Lancashire | 134.5 | 4.6 | 29.2 |
| Cheshire ⁽⁴⁾ | 5.4 | 0.13 | 41.5 |
| G'Man/M'side/W'ton/Halton ⁽³⁾ | 22.5 | 1.65 | 13.6 |
| Total Crushed Rock | 319.3 | 10.4 | 30.7 |
| Sand & Gravel | | | |
| Cumbria ⁽²⁾ | 10.5 | 0.7 | 15.0 |
| Lancashire | 3.24 | 0.5 | 6.5 |
| Cheshire | 19.2 | 1.97 | 9.7 |
| G'Man/M'side/W'ton/Halton ⁽³⁾ | 6.3 | 0.26 | 25.8 |
| Total Sand & Gravel | 39.24 | 3.43 | 11.44 |

- (1) Apportionment figures given only for total crushed rock.
(2) Cumbria includes the Lake District National Park.
(3) Data combined to preserve confidentiality.
(4) Apportionment figures excludes Warrington & Halton

Data excludes marine reserves.

There has been no inclusion of apportionment figures for High Specification Aggregate as no figure is provided for the annualised requirement for HSA within the ODPM guidelines for aggregate provision in England.

**TABLE 3B: MONITORING OF LANDBANKS –
NORTH WEST REGION 2004 (METHOD B, PARAGRAPH 5)**

| | 1 2004 Sales (Mt) | 2 Reserves Permitted @ 31/12/04 (Mt) | 3 Average Annual Sales (Mt) (2001-04) | 4 Landbank @ 31/12/04 years |
|---|-------------------------|--|---|--------------------------------------|
| Limestone⁽¹⁾ | | | | |
| Cumbria ⁽²⁾ | 2.8 | 96.1 | 2.8 | 34.3 |
| Lancashire | 2.7 | 54.7 | 2.7 | 20.3 |
| Total Limestone | 5.5 | 150.8 | 5.5 | 54.6 |
| Sandstone & Igneous Rock | | | | |
| Cumbria ⁽²⁾ | 1.1 | 60.9 | 1.1 | 55.4 |
| Lancashire | 1.3 | 79.8 | 1.7 | 46.9 |
| Cheshire | 0.05 | 5.4 | 0.03 | 180.0 |
| G'Man/M'side/W'ton/Halton ⁽³⁾ | 1.5 | 22.5 | 1.4 | 16.1 |
| Total Sandstone & Igneous Rock | 3.95 | 168.6 | 4.23 | 39.36 |
| Total Crushed Rock | 9.4 | 319.4 | 9.7 | 32.9 |
| Sand & Gravel | | | | |
| Cumbria ⁽²⁾ | 0.8 | 10.5 | 0.9 | 11.7 |
| Lancashire | 0.4 | 3.2 | 0.5 | 6.4 |
| Cheshire | 1.1 | 19.2 | 1.3 | 14.8 |
| G'Man/M'side/W'ton/Halton ⁽³⁾ | 0.5 | 6.3 | 0.5 | 12.6 |
| Total Sand & Gravel | 2.8 | 39.2 | 3.2 | 12.3 |

(1) Excludes limestone used for non-aggregate purposes.

(2) Cumbria includes the Lake District National Park.

(3) Data combined to preserve confidentiality.

Data excludes marine reserves.

Totals may not add up due to rounding



6. MARINE SAND LANDINGS FROM OFF THE NORTH WEST COAST

6.1 During 2004, 653,871 tonnes of marine aggregates were landed from off the North West Coast, which was 141,651 tonnes greater than the 2003 total of 512,220 tonnes. When compared against the total permitted removal for the region of 1,384,999 tonnes it is clear that total aggregate landings remain well below the authorised limit of extraction.

6.2 Landings for 2004 in the North West Region (excluding landings at Penrhyn) amounted to 601,564 tonnes. That is a significant increase in landings of 140,655 tonnes, on the 2003 total of 460,909 tonnes. Landings at Eastham continued to increase from 43,046 tonnes in 2000 to 99,079 tonnes in 2004. Landings in Heysham continued to show a reduction from a high in 2002 of 129,719 to 95,550. The amount of marine aggregate landed at Liverpool markedly increased on previous years, recording a highest stated figure over the past twelve years of 385,886 tonnes.

Table 4 summarises the landings by port, from statistics published by the Crown Estate or Mineral Planning Authority data. Map 2 indicates the location of the dredging grounds.

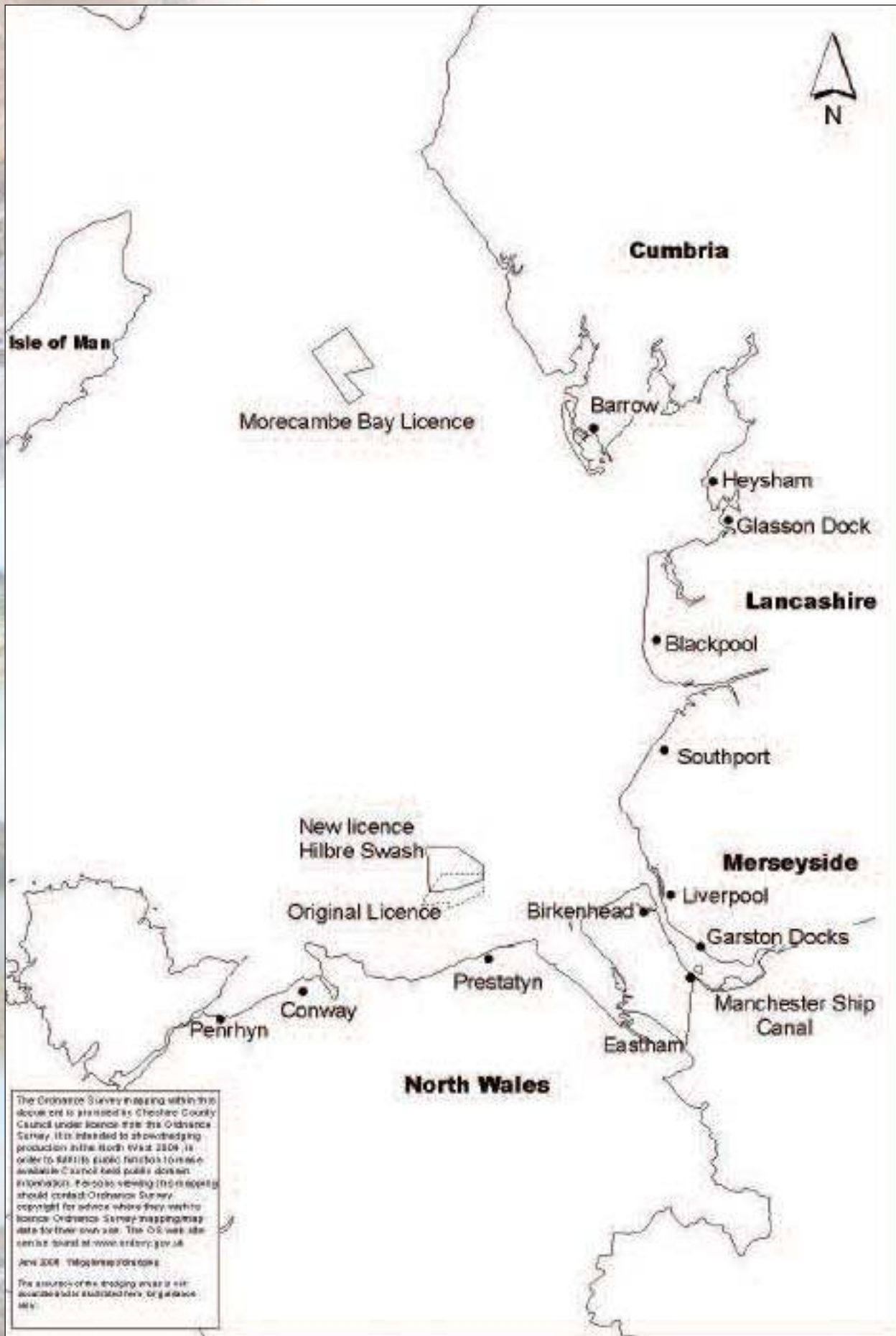
6.3 It should be noted that some of the dredged aggregate may have been used to replenish coastal protection and may not be included within the marine landings figure.

TABLE 4: PRODUCTION OF MARINE LANDED SAND AND GRAVEL FROM OFF THE NORTH WEST COAST 1992-2004 (TONNES)

| Landing Point | 1992 | 1993 | 1994 | 1995 | 1996 | 1997 | 1998 | 1999 | 2000 | 2001 | 2002 | 2003 | 2004 |
|---|----------------|----------------|----------------|----------------|----------------|----------------|----------------|----------------|----------------|----------------|----------------|----------------|----------------|
| Birkenhead | - | - | - | - | - | - | - | - | - | - | - | - | - |
| Eastham | - | - | - | - | - | - | - | - | 43,046 | 71, 615 | 74,055 | 75,000 | 99,079 |
| Liverpool | 245,816 | 218,800 | 223,870 | 222,610 | 247,197 | 246,598 | 231,072 | 243,882 | 179,444 | 253, 382 | 260,258 | 237,262 | 385,886 |
| Heysham | - | - | - | - | - | - | - | 53,848 | 75,376 | 105, 982 | 129,719 | 105,812 | 95,550 |
| Barrow | | | | | | | | | | 30,000 | 42,835 | 42,835 | 21,049 |
| Total Landed in the North West Region | 245,816 | 218,800 | 223,870 | 222,610 | 247,197 | 246,598 | 231,072 | 297,730 | 297,866 | 460,979 | 506,867 | 460,909 | 601,564 |
| Penrhyn Nr Bangor (North Wales) | 53,279 | 65,446 | 62,709 | 54,483 | 40,054 | 36,939 | 43,510 | 57,314 | 61,270 | 44, 951 | 66,334 | 51,311 | 52,307 |
| Total Aggregate Landings from off the North West Coast | 298,095 | 284,246 | 286,579 | 277,093 | 287,251 | 283,537 | 275,590 | 355,044 | 359,136 | 505,930 | 573,201 | 512,220 | 653,871 |
| Authorised limit of removal (Mt) | 1.38 | 0.70 | 0.80 | 0.80 | 0.80 | 0.68 | 1.26 | 1.39 | 1.38 | 1.38 | 1.38 | 1.38 | 1.38 |

Source: Crown Estate or Mineral Planning Authority data

Map 2
Licenced Dredging Areas: North West Coastal Waters



7. SECONDARY AGGREGATES

- 7.1 Government guidance contained in MPG 6 'Guidelines for Aggregate Provision' provides for an increasing amount of the supply to be met by secondary aggregates. Previous attempts at collecting information on the total sales and reserves of secondary aggregates have been difficult and have produced vague results due to the poor response from operators. Returns received in the past have been crude estimates particularly with regard to construction and demolition wastes.
- 7.2 The then DETR introduced major changes regarding the collection of statistics for secondary aggregates following completion of a research project by Arup Economics and Planning, "Statistics on arisings and use of mineral and construction wastes as aggregates. Information collection issues". Responsibility for the collection of statistics for construction and demolition wastes has been passed to the Environment Agency. The RAWP has continued to collect information from major producers such as power stations. They have also been requested to collect information relating to the use of road planings.
- 7.3 Table 5 shows the results since 1998. The majority of the reserve and re-use figures reflect the significant volume of Pulverised Fuel Ash in the region. Comprehensive returns were not provided for the AM2004 survey, and are therefore omitted from Table 5.

Road Planings

- 7.4 In 2004 a total of 214,047 tonnes of road planings were identified in the North West – a reduction of 15,371 tonnes on the 2003 reported total of 229,418. There was a 73% return rate for the 2004 Annual Road Planings Survey, and it must be noted that the road planing arisings, re-use and stocks figures relate to actual returns only. Lancashire, Cumbria and Stockport did not furnish the NWRAMP with arisings and re-use figures within their areas and the total may therefore be skewed downwards. 91% (194,244 tonnes) of the arisings were reused, principally for the surfacing of car parks, footpaths and unadopted roads. Unused material was either stockpiled or disposed of to landfill. Little material is usually held in stock with only 2,800 tonnes being identified in 2004. This does not include data from the Highways Agency.

Future Construction and Demolition study

- 7.5 The North West Regional Technical Advisory Body (RTAB), the North West Minerals Waste Planning Authorities and the Environment Agency wish to commission a Construction, Demolition and Excavation waste survey for the North West.
- 7.6 The Environment Agency carried out an initial survey of C&D waste arisings in 1999 and produced estimates of arisings with regional apportionment. ODPM then repeated this survey for 2001 and 2003 arisings, to build up a time series of comparable data.
- 7.7 The recently issued PPS10 and accompanying guidance places a significantly increased burden on the RTAB to collect, to collate and to publish data and information on waste management within the region. This information will be crucial for the development of strategic plans and Local Development Frameworks and also to provide the necessary numeric context to individual planning applications and appeals.
- 7.8 In 2004, the RTAB published the first Waste Management Monitoring Report for 2003 which provided an update of the related data and position in the region since the publication of the Waste Management Technical Report in 2001.





- 7.9 The RTAB are currently preparing the second RTAB Monitoring Report for 2004 which will be used as a tool to monitor the implementation and progress towards the North West Regional Waste Strategy actions and targets.
- 7.10 The development of this report has highlighted a gap in sub-regional CD&E waste data. Whilst data is available for 1999, 2001 and 2003, it is not possible to apportion this data to North West sub-regions (Cheshire, Lancashire, Cumbria, Greater Manchester, Merseyside and Warrington & Halton).
- 7.11 DEFRA's 3 year Waste Data Strategy will replace the need for future surveys. DEFRA's system is expected to go live in 2007, with the first reporting year as 2008. The region will therefore have a deficit of CD&E data from 2003 until 2008, a period of five years. We urgently need detailed regional CD&E waste production data that can be reliably apportioned between the North West sub-regions of Cumbria, Lancashire, Cheshire, Merseyside, Greater Manchester and Mid-Mersey (Warrington & Halton).
- 7.12 RTAB therefore wish to commission a Construction, Demolition and Excavation Waste survey for the North West.
- 7.13 **The aim of the project is:**
- To collect data on the arisings and use of construction, demolition and excavation waste (including hazardous materials, hard materials and soils), during 2005/6.
- 7.14 **The objectives of the project are:**
1. To review the availability of CD&E waste arisings in the North West.
 2. To review briefly recent relevant surveys with regard to methodology and results.
 3. To review and update the Environment Agency's permit and other regulatory monitoring data returns for CD&E waste management in the North West, including exempt activities, and ensure that this data is integrated with the survey methodology and analysis.
 4. To develop, an agreed methodology that will provide the required estimates, to a regional and sub-regional level. The methodology will cover sampling, confidence limits, questionnaire design, validation procedures, assessment of contaminated materials, survey timescales, and format of survey report.
- 7.15 Further details of this study should be provided in the Annual Report 06.

TABLE 5: SECONDARY AGGREGATE REUSE AND RESERVES 1998-2004 (TONNES)

Arisings and Reuse

| NW Region | 1998 Arising | 1999 Arising | 2000 Arising | 2001 Arising | 2002 Arising | 2003 Arising | 2004 Arising | 1998 Re-use | 1999 Re-use | 2000 Re-use | 2001 Re-use | 2002 Re-use | 2003 Re-use | 2004 Re-use |
|--|-----------------|-----------------|-----------------|-----------------|-----------------|-----------------|-------------------------|----------------|----------------|----------------|----------------|----------------|----------------|------------------------|
| Material Type | | | | | | | | | | | | | | |
| Road Planings ⁽¹⁾ | 155,087 | 155,235 | 156,694 | 144,956 | 230,788 | 240,516 | 214,047 | 122,591 | 130,787 | 128,097 | 114,688 | 216,941 | 229,418 | 214,047 |
| Clay/Shales/ Pulverised Fuel Ash, slate and Blast Furnace Slag & Other ⁽²⁾ | - | - | - | - | - | - | - | 298,733 | 293,301 | 236,712 | (3) | 212,268 | 529,151 | (3) |
| Total | 155,087 | 155,235 | 156,694 | 144,956 | 230,788 | 240,516 | 214,047 | 421,324 | 424,088 | 364,809 | N/A | 429,209 | 758,569 | N/A |

Reserves

| NW Region | 1998 Reserves | 1999 Reserves | 2000 Reserves | 2001 Reserves | 2002 Reserves | 2003 Reserves | 2004 Reserves |
|--|-------------------|-------------------|-------------------|------------------|------------------|--------------------------|--------------------------|
| Material Type | | | | | | | |
| Road Planings ⁽¹⁾ | 4,030 | 5,390 | 10,028 | 16,450 | 8,216 | 1,716 | 2,800 |
| Clay/Shales/ Pulverised Fuel Ash, slate and Blast Furnace Slag & Other ⁽²⁾ | 11,380,000 | 10,540,000 | 10,901,030 | (3) | 11,355,000 | 17,190,000 | (3) |
| Total | 11,384,030 | 10,545,390 | 10,911,058 | N/A | 11,361,416 | 17,191,716 | N/A |

(1) Does not include Highways Agency data

(2) Figures include some estimates by MPA

(3) Not surveyed during 2001 or 2004

Figures in Tonnes



8. MONITORING OF PLANNING APPLICATIONS

- 8.1 The monitoring of planning applications provides information on new permissions which add to reserves and provides information about the way in which the planning system operates. In particular, if problems arise in meeting landbank requirements, monitoring of applications provides one means of identifying the cause of the problem.
- 8.2 Table 6 shows the number of planning applications for aggregate extraction in the North West granted or refused planning permission, along with the tonnages applied for and the material type. A more detailed analysis of the planning application monitoring exercise is set out Tables A and B in Appendix 2. Table A shows those applications where a decision was taken during the survey period 1 January 2004 to the 31 December 2004. Table B shows those applications for which a decision was still pending as at 1 April 2005.

TABLE 6: MONITORING OF AGGREGATE PLANNING APPLICATIONS 1/1/2004-31/12/2004: SUMMARY

| | Crushed Rock (Mt) | | Land Won Sand & Gravel (Mt) | |
|--------------|----------------------|------------|-----------------------------|----------|
| | Granted | Refused | Granted | Refused |
| Cheshire | - | - | - | - |
| Cumbria | 0.06 ⁽¹⁾ | - | 0.5 ⁽¹⁾ | - |
| Lancashire | 10.06 ⁽¹⁾ | - | - | - |
| G Manchester | - | - | 0.8 ⁽¹⁾ | - |
| Merseyside | - | - | - | - |
| Warrington | - | - | - | - |
| Total | 10.66 | 0.0 | 1.3 | 0 |

Superscript - indicates number of planning applications determined in each MPA area (contributing to figures in Table 6).

9. EVENTS OF INTEREST

LANCASHIRE

Events of Interest

- 9.1 An extension to the Scout Moor gritstone quarry was granted on appeal, subject to legal agreement, in 2004 following a Public Inquiry in September 2002. There were no other planning applications for additional crushed rock reserves received or determined in 2004. The production of sandstone and igneous rock showed a marked decline in 2004 with this figure reducing by some 0.3 mt from the 2003 recorded figure. Total sandstone and igneous rock production was 1.3 mt in 2004. This continues the generally downward trend in production since 2002. Reserves of sandstone and igneous rock increased by 11.1 mt between 2003 and 2004, and an assumption is made that this is as a result of the Scout Moor planning application releasing additional reserves.
- 9.2 Limestone production remained constant, with total limestone production increasing marginally from 2.6 mt in 2003 to 2.7 mt in 2004. This figure is very much in line with previous year's production figures. There were no planning applications in 2004, therefore the permitted reserve of limestone dropped from 57.5 mt to 54.7 mt between 2003 and 2004.

9.3 An application was received for the extraction of 820,000 tonnes of sand and gravel (260,000 tonnes of sand and 560,000 tonnes of gravel) over a period of 7 years at Sharples Farm, near Garstang, which would supply the applicant's network of ready mixed concrete plants throughout Lancashire and surrounding areas. This planning application is the first substantial proposal for sand and gravel extraction that the County Council has received since 1992, although three further planning applications for sand extraction at sites elsewhere in the County were expected to be submitted in 2005/2006.

9.4 Land won sand and gravel production in Lancashire was down slightly from 0.46 mt in 2003 to 0.44 mt in 2004. Reserves were down from 3.54 mt to 3.24 mt.

Construction Industry Activity

9.5 Apart from the ongoing activity at the strategic development location at the Royal Ordnance Site in Chorley and South Ribble Districts, there were no notable major construction projects taking place during 2004.

CUMBRIA

Events of Interest

9.6 Sandstone and igneous rock production remained at 1.1 mt, with this production level being constant since 2001. As there were no planning applications for the addition release of limestone reserves, the reserve figure declined from 62.0 mt in 2003 to 60.9 mt in 2004.

9.7 Limestone production had declined in 2003 from previous years, and the returns for 2004 showed an increased production level of 2.8 mt compared with 2.6 mt in 2003. This figure is still generally below the previously recorded limestone production figures for the County. There was a small amount of additional limestone reserve permitted at Sandside Quarry in 2004 (0.06 mt), however this was not sufficient to halt the declining limestone reserves, with the reserve dropping from 99.2 mt in 2003 to 96.1 mt in 2004.

9.8 Land won sand and gravel production declined from 1.0 mt in 2003 to 0.8 mt in 2004. The reserve figures were supplemented by the release of 0.5 mt at New Cowper Quarry. Subsequently the reserve figure stands at 3.24 mt in 2004, from 3.54 mt in 2003.

Construction Industry Activity

9.9 There were no major construction projects in Cumbria in 2004.

GREATER MANCHESTER, MERSEYSIDE, WARRINGTON, HALTON

Events of Interest

9.10 The total production of sandstone in the region is slightly higher than the previous year (1.5 mt in 2004 compared with 1.4 mt in 2003), whilst reserves are slightly lower due to a re-assessment, although this is a relatively minor change (22.5 mt from 22.6 mt in 2003).

9.11 Production of land won sand and gravel remained constant at 0.5 mt, and a new planning permission has been granted which has impacted slightly on reserves, with the permitted reserve of sand and gravel declining from 6.7 mt in 2003 to 6.3 mt in 2004.





9.12 It should be noted that much of the figures for Merseyside are based on estimates derived from earlier year's data, local knowledge and information including monitoring report data.

Construction Industry Activity

- 9.13 The boom in construction industry activity in Greater Manchester has continued, especially in Manchester City Centre and the surrounding area. These activities include the regeneration of East Manchester, where there are proposals for a major business park, a new district centre, a transport gateway, and a significant number of housing developments, including the transformation of the Cardroom Estate into a mixed-use development with canal side development. In addition, an Urban Regeneration Company has been set up to transform Central Salford over the next 20 years, including the redevelopment of the canal district and Chapel Street.
- 9.14 Across Greater Manchester there are many small-scale housing developments, and two Housing Market Renewal areas have been identified - Salford/Manchester and Oldham/Rochdale - which will involve demolishing and rebuilding where appropriate. Redevelopment work has commenced at the University of Manchester following the recent merger of two universities. There are ongoing road engineering and construction works to widen the M60 Ring Road between Junction 5 and 8.
- 9.15 The Merseyside sub region remains buoyant with construction and demolition activity especially with the regeneration of Liverpool City Centre, Objective 1 funded strategic Investment Areas and with the Housing Market Renewal Initiatives in Sefton, Liverpool and Wirral.
- 9.16 Demand for primary minerals and aggregates and also secondary and recycled aggregate is therefore expected to be high in Merseyside until at least 2008.

CHESHIRE

Events of Interest

- 9.17 Cheshire produces only a very small amount of crushed rock, 0.05 mt in 2004, which is generally consistent with previous years returns. There were no addition reserves of crushed rock permitted during the period, however due to low production figures the reserves were not significantly depleted. The permitted reserve was 5.4 mt in 2004.
- 9.18 Sand and gravel production declined over the past 12 months by 0.3 mt, with the 2004 production figures for crushed rock being 1.1 mt. The lowest recorded figure. Sand and gravel reserves within Cheshire declined from 19.7 mt in 2003 to 19.2 mt in 2004. Additional reserves of construction sand may be released at Eaton Hall Quarry where a planning application was pending. This site primarily provides silica sand, however it does produce an element of construction sand also.

Construction Industry Activity

- 9.19 There were no major construction projects in Cheshire in 2004.

10. MONITORING OF DEVELOPMENT PLANS

- 10.1 Work on preparing Unitary Development Plans, Structure Plans and Minerals Local Plans continued to progress during 2004. The current state of progress regarding preparation of development plans in the North West is listed in Appendix 3.
- 10.2 In respect of the current state of Minerals Local Plans, The Cheshire Replacement Minerals Local Plan was adopted in June 1999; Cumbria's Minerals & Waste Local Plan was adopted in June 2000 and Lancashire's Minerals & Waste Local Plan was adopted on 28 December 2001.



11. ENVIRONMENT ACT 1995: REVIEW OF AGGREGATE MINERAL PLANNING PERMISSIONS

TABLE 7: ENVIRONMENT ACT 1995: SUMMARY OF AGGREGATE MINERAL REVIEW SITES

| MPA | Phase I | | | | | | Phase II | | | | | | Dormant | | |
|--------------------------------|----------|------------------|----------------------------------|------------|----------|-------------------------|----------|------------------|----------------------------------|------------|----------|-------------------------|-------------------|----------------------------------|------------|
| | Original | Lapsed | Submitted but not yet determined | Determined | With SoS | In High Court Challenge | Original | Lapsed | Submitted but not yet determined | Determined | With SoS | In High Court Challenge | Original | Submitted but not yet determined | Determined |
| Cumbria | 10 | 1 ⁽¹⁾ | 1 | 8 | - | - | 2 | - | - | 2 | - | - | 27 | - | 1 |
| Cheshire | 5 | - | - | 7 | - | - | 1 | - | - | 1 | - | - | 7 | 1 | - |
| Lake District National Park | 5 | - | 2 | 3 | - | - | 0 | - | - | - | - | - | 2 | - | - |
| Lancashire | 11 | - | - | 11 | - | - | 2 | 1 ⁽¹⁾ | 1 | - | - | - | 8 | - | - |
| Greater Manchester/ Merseyside | 10 | 5 ⁽²⁾ | 1 | 4 | - | - | 1 | - | - | 1 | - | - | 18 ⁽³⁾ | - | 1 |

(1) Applications allowed to lapse as superseded by modern permission.

(2) Permissions allowed to lapse on 3 sites as working had finished. Permissions lapsed on 2 sites due to failure to submit conditions by due date.

(3) Position with respect to dormant sites in Greater Manchester currently under review. 2003 report figure used for dormant sites.

1. To regularly monitor the production and sales of aggregate minerals within the region.
2. To assess the total sand, gravel and hardrock (limestone, and sandstone) reserves available in the region suitable for aggregate production (i.e. those with planning permission and other areas where there is some commitment in local authority statutory and non-statutory plans), making reference to areas where planning permission has been refused and to those in industry ownership, and taking into account the availability of marine dredged materials and the use of materials for non-aggregate purposes.
3. To assess the likely short term demand for aggregates within the Region.
4. To indicate whether, in the short term, current permitted reserves are likely to be adequate.
5. To assess the extent of imports of aggregate minerals from other regions.
6. To indicate to what extent the market area serviced by the Region could and should, be allowed to change in the medium and longer term (i.e. 10 and 20 years respectively).
7. To consider the extent and implications of the present and potential future use of synthetic and waste materials as substitutes for natural aggregates.
8. To take adequate account of agricultural, amenity and other planning conditions in examining the above (particularly 6) - e.g. other land uses and transport).



APPENDIX 2

TABLE A: MONITORING OF AGGREGATE MINERAL PRIMARY PLANNING APPLICATIONS
FINAL DECISIONS MADE 1ST JANUARY 2004 – 31ST DECEMBER 2004

Cheshire

No final planning application decisions made in Cheshire

Cumbria

| Site Name | Location & Grid Reference | Applicant/ Operator | Application No | Date Submitted | Mineral / Type of Working | Area of Application (ha) | Quantity of Minerals | Date issued |
|-----------------|---------------------------------|-----------------------------------|----------------|----------------|---------------------------|--------------------------|----------------------|-------------|
| New Cowper | Aspatia, Wigton, 311635, 545960 | Thomas Armstrong (Aggregates) Ltd | 2/03/9022 | 11 July 2003 | Construction Sand | 9.5 | 500,000 t | 25 Feb 2004 |
| Sandside Quarry | Sandside, Milnthorpe, SD482807 | Neil Price Ltd | 6/03/9020 | 23 Feb 2004 | Limestone / Dolomite | 1.14 | 58,000 t | 22 Dec 2004 |

Greater Manchester

| Site Name | Location & Grid Reference | Applicant/ Operator | Application No | Date Submitted | Mineral / Type of Working | Area of Application (ha) | Quantity of Minerals | Date issued |
|-----------------|---------------------------|--------------------------|----------------|----------------|---------------------------|--------------------------|----------------------|-------------|
| Pilsworth South | Bury, 826 089 | Viridor Waste Management | 397002/02 | 28 August 2002 | Sand | 81.0 | 0.8 mt | 17 Aug 2004 |

Warrington

No final planning application decisions made in Warrington

Merseyside

No final planning application decisions made in Merseyside

Lancashire

| Site Name | Location & Grid Reference | Applicant/ Operator | Application No | Date Submitted | Mineral / Type of Working | Area of Application (ha) | Quantity of Minerals | Date issued |
|-------------------|---------------------------|---------------------|----------------|----------------|---------------------------|--------------------------|----------------------|----------------------------------|
| Scout Moor Quarry | 815 188 | Marshalls Mono | 14/96/108 | 20 May 1996 | Sandstone | 20.8 | 10.6 mt | September 2004 granted on appeal |

TABLE B: AGGREGATE MINERAL PRIMARY PLANNING APPLICATIONS 'IN HAND' AT 1ST APRIL 2005

Cheshire

| Site Name | Location/ Grid Ref | Applicant/ Operator | Application Number | Date Submitted | Mineral/Type of Working | Area of Application (ha) | Quantity of Minerals | Remarks |
|-------------|-------------------------|---------------------|--------------------|----------------|----------------------------------|--------------------------|---|--|
| Eaton Hall | Congleton SJ 861 643 | Tarmac Ltd | 5/APP/2004 0012 | July 2004 | Silica / Construction Sand | 33 | Approx 900,000 tonnes (excluding silica sand) | Permitted reserves at the existing site would also be worked in conjunction and the quarry's life span would be extended. |
| Dingle Bank | SJ 815 748 | WBB Minerals | 5/05/0751 | March 2005 | Silica / Construction Sand | 25 | Approx 1 mt (excluding silica sand) | Extension of site. |

32

Cumbria

No primary planning applications pending

Lancashire

| Site Name | Location & Grid Ref. | Applicant/ Operator | Application Number | Date Submitted | Mineral/ Type of Working | Area of Application (Ha.) | Quantity of Minerals | Remarks |
|--|----------------------|---------------------|--------------------|----------------|--------------------------|---------------------------|----------------------|--|
| Land at Sharples Farm, St Michaels | 468 426 | RMC Northern | 02/04/0652 | 14 May 2004 | Sand and Gravel | 56 | 829,000 tonnes | 260,000 tonnes of sand and 560,000 tonnes of gravel to primarily supply the applicant's network of ready mixed concrete plants |

Greater Manchester

| Site Name | Location & Grid Ref. | Applicant/ Operator | Application Number | Date Submitted | Mineral/ Type of Working | Area of Application (Ha.) | Quantity of Minerals | Remarks |
|---------------|----------------------|---|--------------------|----------------|--------------------------|---------------------------|----------------------|--|
| Fletcher Bank | Bury 390 170 | Peel Holdings | 43048 | August 2004 | Gritstone | 19 | 4.5 mt | Quarry extension |
| Fletcher Bank | Bury 380 170 | Peel Holdings | 36288/00 | 01/02/00 | Gritstone | 23 | N/A | New conditions proposed |
| Fletcher Bank | Bury 380 170 | Peel Holdings | 36331/00 | 01/02/00 | Gritstone | 5.8 | 0.4 mt | New conditions proposed |
| Buckton Vale | Tameside | Aggregate Industries UK Ltd | 04/01800/FUL | 29/11/04 | Sandstone | 33 | 6.7 | Application for variation of condition 29 of 84/05/17366 to extend quarrying to 2020 |
| Astley Moss | Salford 371 500 | Peel Investments and EFG Horticultural Products Ltd | 02/45004/E1A | 28/10/00 | Sand and Gravel | 80.0 | 2.9 mt | Quarry extension |
| Harrop Edge | Tameside 982 959 | Chartrange (Quarry Products) | K00029/02 | 17/12/01 | Gritstone | 5.8 | 0.4 mt | Extension to existing quarry |
| Harrop Edge | Tameside 982 959 | Chartrange (Quarry Products) | K00524/02 | 12/04/02 | Gritstone | 5.8 | N/A | Application for 6 month extension |

Merseyside

Nil applications pending

| | UDP / Minerals Local Plan Position | LDF Position - June 2006 | | |
|-------------------------|---|--------------------------------|---|---|
| | | LDS | SCI | DPDs |
| Cheshire | Replacement Minerals Local Plan adopted 1999 | Adopted March 2005 | Submitted to SoS for consideration | Preproduction and evidence gathering. Draft issues and Options April 2007 |
| Cumbria | Cumbria Minerals & Waste Local Plan adopted June 2006 | Adopted March 2005 | Adopted 19th January 2006 | Issues and options discussion paper June 2006 |
| Lancashire | Minerals and Waste Local Plan adopted December 2001 | Adopted May 2005 | Consultation and participation on draft SCI | Core strategy issues and options discussion paper published January 2006 |
| Lake District Authority | Lake District Local Plan adopted May 1998 | Adopted March 2005 | Published November 2005 | - |
| Bolton | Replacement UDP adopted April 2005 | Published April 2005 | Draft SCI consultation February 2006 | - |
| Bury | Review of UDP abandoned to begin work on LDF | Revised LDS adopted March 2006 | Adopted March 2006 | Key Issues report produced |
| Manchester | Current UDP adopted July 1995 - partial reviews adopted | Revised annually | Revised draft - consultation May 2006 | Draft core strategy objectives - consultation March 2006 |
| Oldham | Deposit of modifications February 2006 | Adopted March 2006 | Draft SCI consultation April 2006 | - |
| Rochdale | Replacement UDP proposed to be adopted June 2006 | Adopted March 2006 | Draft SCI consultation November 2006 | - |
| Salford | Replacement UDP proposed to be adopted June 2006 | Approved March 2006 | Commenced production April 2006 | - |
| Stockport | Replacement UDP proposed to be adopted May 2006 | Approved March 2006 | Draft SCI consultation November 2005 | - |
| Tameside | Replacement UDP adopted November 2004 | Adopted March 2005 | Draft SCI consultation November 2005 | - |

| | UDP / Minerals Local Plan Position | LDF Position - June 2006 | | |
|------------|--|--------------------------|---|--|
| | | LDS | SCI | DPDs |
| Trafford | Replacement UDP proposed to be adopted June 2006 | Adopted June 2005 | Revised draft SCI consultation November 2005 | - |
| Wigan | Replacement UDP adopted April 2006 | Revised early 2006 | Revised draft SCI consultation October 2005 | - |
| Warrington | UDP adopted January 2006 | - | - | - |
| Halton | UDP adopted July 2004 | Adopted March 2006 | Draft SCI | Work to commence in 2006 |
| Knowsley | UDP adoption anticipated in July | - | - | - |
| Liverpool | UDP adopted July 2002 | Updated June 2006 | - | - |
| St Helens | Review of UDP abandoned to proceed with preparation of LDF | Approved April 2006 | Consultation until 31st May 2006 | Issues and options consultation September 2005 |
| Sefton | Replacement UDP anticipated June 2006 | - | - | |
| Wirral | UDP review process abandoned | Approved March 2005 | Submitted to SoS May 2006 | Consultation on issues and options Autumn 2005 |

Cheshire

| Site Name | Grid Ref | Operator | Aggregate Type | Active/ Inactive |
|-------------------------|------------|------------------------------|-------------------|------------------|
| Cobden Farm | SJ 585 675 | Tarmac Central Ltd | Construction Sand | Inactive |
| Mere Farm | SJ 834 744 | Hanson Aggregates | Construction Sand | Active |
| Town Farm | SJ 565 740 | Hanson Aggregates | Construction Sand | Active |
| Fishpool | SJ 571 670 | Tarmac Central Ltd | Construction Sand | Active |
| Cherry Orchard Farm | SJ 568 680 | Cherry Orchard Sand Unit Ltd | Construction Sand | Active |
| Forest Hill Quarry | SJ 611 717 | CEMEX RMC (UK) Ltd | Construction Sand | Active |
| Hough Mill | SJ 702 492 | Anthony Construction Ltd | Construction Sand | Inactive |
| Fourways | SJ 572 692 | Tarmac Central Ltd | Construction Sand | Active |
| Crown Farm | SJ 575 703 | Tarmac Central Ltd | Construction Sand | Active |
| White Moss Quarry | SJ 775 548 | Land Recovery Ltd | Construction Sand | Active |
| Delamere / Station Road | SJ 564 698 | Tarmac Central Ltd | Construction Sand | Inactive |
| Arclid Hall | SJ 786 613 | Bathgate Silica Sand Ltd | Silica Sand | Active |
| Far Arclid | SJ 785 615 | Bathgate Silica Sand Ltd | Silica Sand | Inactive |
| Bent Farm | SJ 828 623 | WBB Minerals | Silica Sand | Active |
| Chelford | SJ 815 748 | WBB Minerals | Silica Sand | Active |
| Eaton Hall | SJ 861 643 | Tarmac Central Ltd | Silica Sand | Active |
| Endon Quarry | SJ 941 760 | Park Skip Hire | Gritstone | Active |
| Sycamore Quarry | SJ 939 764 | Mrs D Earl | Gritstone | Active |
| Marksend Quarry | SJ 942 757 | Mrs D Earl | Gritstone | Active |
| Gawsworth | SJ 705 869 | O'Gara Developments | Gritstone | Active |
| Rough Hey | SJ 923 683 | O'Gara Developments | Gritstone | Inactive |
| Lee Hills | SJ 928 691 | Mr R Rathbone | Gritstone | Inactive |

Cumbria

| Site Name | Grid Ref | Operator | Aggregate Type | Active/ Inactive |
|----------------------------|------------|--|-------------------------|---------------------|
| Holmescales Quarry | SD 556 869 | Aggregate Industries UK Ltd | HSA | Active |
| Roan Edge Quarry | SD 584 926 | CEMEX RMC (UK) Ltd | HSA | Active |
| Ghyll Scaur Quarry | SD 171 828 | Aggregate Industries UK Ltd | HSA | Active |
| Shap Blue Quarry and Works | NY 564 106 | CEMEX RMC (UK) Ltd | Igneous/ Metamorphic | Active |
| Shap Pink Quarry | NY 555 084 | CEMEX RMC (UK) Ltd | Igneous/ Metamorphic | Active |
| Silvertop Quarry | NY 586 602 | W & M Thompson (Quarries) Ltd | Limestone | Active |
| Parkhead Quarry | NY 342 407 | Hanson Aggregates | Limestone | Active |
| Moota Quarry | NY 148 361 | CEMEX RMC (UK) Ltd | Limestone | Active |
| Tendley Quarry | NY 088 288 | Tendley Quarries Ltd | Limestone | Active |
| Hartley Quarry | NY 787 083 | CEMEX RMC (UK) Ltd | Limestone | Active |
| Shapfell Limestone Quarry | NY 587 138 | Corus Construction and Industrial Businesses | Limestone | Active |
| Shap Beck Quarry | NY 550 181 | Hanson Aggregates | Limestone | Active |
| Helbeck Quarry | NY 799 158 | Sherburn Stone Company Ltd | Limestone | Active |
| Eskett & Rowrah Quarries | NY 054 167 | Aggregate Industries UK Ltd | Limestone | Active |
| Goldmire Quarry | SD 219 739 | Neil Price Ltd | Limestone | Active |
| Holme Park Quarry | SD 536 788 | Aggregate Industries UK Ltd | Limestone | Active |
| Stainton Quarry | SD 246 729 | Tarmac Northern Ltd | Limestone | Active |
| Snowhill Quarry | NY 280 387 | Mr Smallwood | Limestone | Active |
| Sandside Quarry | SD 482 807 | Tarmac Northern Ltd | Limestone | Active |
| Baycliff Haggs Quarry | SD 281 776 | Hodgestone Ltd | Limestone | Active |
| Blencowe Quarry | NY 464 301 | Aggregate Industries UK Ltd | Limestone | Dormant |
| Kendal Fell Quarry | SD 502 925 | Tarmac Northern Ltd | Limestone | Dormant |

| Site Name | Grid Ref | Operator | Aggregate Type | Active/ Inactive |
|-----------------------|------------|-----------------------------|----------------|---------------------|
| Cardewmires Quarry | NY 343 505 | Tarmac Northern Ltd | Sand & Gravel | Active |
| Faugh No1 Sand Pit | NY 512 552 | Hanson Aggregates | Sand & Gravel | Active |
| Low Gelt | NY 523 587 | Hanson Aggregates | Sand & Gravel | Active |
| Kirkhouse Quarry | NY 564 601 | Lakeland Minerals Ltd | Sand & Gravel | Active |
| New Cowper | NY 118 458 | Thomas Armstrong Ltd | Sand & Gravel | Active |
| Aldoth Quarry | NY 146 482 | D A Harrison | Sand & Gravel | Active |
| Overby No. 2 Sand Pit | NY 125 470 | Thomas Armstrong Ltd | Sand & Gravel | Active |
| Highfield Quarry | NY 511 252 | D A Harrison | Sand & Gravel | Active |
| Bullgill Sand Pit | NY 095 388 | Thomas Armstrong Ltd | Sand & Gravel | Active |
| Low Plains | NY 490 410 | Tarmac Northern Ltd | Sand & Gravel | Active |
| Bonnie Mount Quarry | NY 548 313 | JEA & SM Burne | Sand & Gravel | Active |
| Peel Place Quarry | NY 069 011 | Tendley Quarries Ltd | Sand & Gravel | Active |
| Roosecote Sand Pit | SD 224 687 | L&W Wilson | Sand & Gravel | Active |
| South Walney | SD 227 623 | L&W Wilson | Sand & Gravel | Active |
| Faugh No.2 Sand Pit | NY 510 548 | Aggregate Industries UK Ltd | Sand & Gravel | Dormant |
| Maryport Harbour | NY 029 368 | Thomas Armstrong Ltd. | Sand & Gravel | Active |
| Workington Harbour | NX 982 294 | Thomas Armstrong Ltd. | Sand & Gravel | Active |
| Port of Barrow | SD 197 676 | Tarmac Northern Ltd. | Sand & Gravel | Active |
| Brocklewath Farm | NY 348 551 | William Roper | Sand & Gravel | Active |

Lancashire

| Site Name | Grid Ref | Operator | Aggregate Type | Active/ Inactive |
|---------------------------------------|------------|---------------------------------------|----------------------|------------------|
| Higher Brockholes Quarry | SD 588 310 | Hanson Aggregates | Sand & Gravel | Active |
| Foreshaw St Annes | SD 295 287 | William Rainford (Holdings) Ltd | Sand | Active |
| Lydiate Lane Quarry | SD 553 240 | Thomas Williams (Euxton) Ltd | Sand & Gravel | Active |
| Port of Heysham | SD 400 602 | Tarmac Central Ltd | Sand | Active |
| Bradleys Sand Pit | SD 512 340 | J A Jackson Contractors (Preston) Ltd | Sand & Gravel | Active |
| Back Lane Quarry | SD 511 693 | Aggregate Industries UK Ltd | Limestone | Active |
| Leapers Wood Quarry | SD 516 694 | Tarmac Central Ltd | Limestone | Active |
| Dunald Mill Quarry | SD 511 680 | Tarmac Central Ltd | Limestone | Active |
| Bankfield Quarry | SD 717 437 | Tarmac Central Ltd | Limestone | Active |
| Waddington Fell | SD 717 477 | Aggregate Industries UK Ltd | Sandstone/ Gritstone | Active |
| Leeming Quarry | SD 683 406 | Brown Bros (Longbridge) Ltd | Sandstone/ Gritstone | Active |
| Whinney Hill Quarry | SD 758 306 | Park Royal Haulage Ltd | Sandstone/ Gritstone | Active |
| Round O Quarry | SD 483 089 | Mainsprint Ltd | Sandstone/ Gritstone | Active |
| Withnell Gritstone (Brinscall Quarry) | SD 634 215 | Hanson Aggregates | Sandstone/ Gritstone | Active |
| Stanworth (Withnell Landfill) | SD 640 240 | Biffa Waste Services Ltd | Sandstone/ Gritstone | Inactive |
| Deerplay Ford | SD 758 235 | Waste Recycling Group | Sandstone/ Gritstone | Active |
| Whitworth Quarry | SD 875 203 | Aggregate Industries UK Ltd | Sandstone/ Gritstone | Active |
| Jamestone Quarry | SD 756 233 | Aggregate Industries UK Ltd | Sandstone/ Gritstone | Active |
| Scout Moor Quarry | SD 815 190 | Marshalls Mono | Sandstone/ Gritstone | Active |
| Stoney Brow/ Hardrock Quarry | SD 520 063 | Hardrock Ltd | Sandstone | Inactive |

Greater Manchester

| Site Name | Grid Ref | Operator | Aggregate Type | Active/ Inactive |
|------------------------|------------|------------------------------|-----------------------|---------------------|
| Pilsworth South Quarry | SD 825 088 | Tarmac | Sand | Active |
| Offerton Sand Quarry | SJ 928 893 | Mr S L Bowers | Sand | Active |
| Harwood Quarry | SD 747 124 | James Booth (Bolton) | Sandstone & Bickshale | Active |
| Pilkington Quarry | SD 622 121 | Santime Ltd | Sand & Sandstone | Active |
| Morleys Hall Quarry | SJ 687 988 | Santime Ltd | Sand | Active |
| New Hey Quarry | SD 940 119 | Brock Plc | Sandstone | Inactive |
| Harrop Edge Quarry | SJ 982 959 | Chartrange (Quarry Products) | Sandstone | Active |
| Fletcher Bank Quarry | SD 804 170 | Marshalls Mono Ltd | Sand & Sandstone | Active |
| Montcliffe Quarry | SD 656 124 | Hanson Aggregates | Sandstone | Active |
| High Moor Quarry | SD 973 067 | Aggregates Industries UK Ltd | Sandstone | Active |
| Buckton Vale Quarry | SD 992 016 | Aggregates Industries UK Ltd | Sandstone | Active |

Merseyside

| Site Name | Grid Ref | Operator | Aggregate Type | Active/ Inactive |
|-----------------------|------------|---------------------------------|-----------------------|---------------------|
| Bold Heath Quarry | SJ 537 890 | D Morgan PLC | Crushed Rock | Active |
| The Horsebank | SD 317 206 | William Rainford (Holdings) Ltd | Industrial Sand | Active |
| Lord St Helens Quarry | SD 516 920 | Ibstock Brick | Sandstone / Gritstone | Inactive |
| Berrington Lane | SJ 493 985 | Rainford Landfill Ltd | Sand | Active |

Warrington

| Site Name | Grid Ref | Operator | Aggregate Type | Active/ Inactive |
|-------------------|------------|------------------------------|----------------|---------------------|
| Southworth Quarry | SJ 620 940 | Wm Gaskell Bros (WM & C) Ltd | Sandstone | Active |
| Birchwood Lane | SJ 588 858 | Hillcrest Recycling Ltd | Sand | Active |

On the 10th June 2003, the ODPM published national and regional guidelines for aggregate provision in England. The guidelines replace those in Annex A of Minerals Planning Guidance Note 6, published in 1994. The revised guidelines are set out below:

National and Regional Guidelines for Aggregates Provision In England, 2001 - 2016 (Million Tonnes) (ODPM 2003).

| New Regions | Guidelines for land-won production | | Assumptions | | |
|------------------------|------------------------------------|-----------------------|----------------------|-----------------------|------------------------|
| | Land-won Sand & Gravel | Land-won Crushed Rock | Marine Sand & Gravel | Alternative Materials | Net Imports to England |
| South East England | 212 | 35 | 120 | 118 | 85 |
| London | 19 | 0 | 53 | 82 | 6 |
| East of England | 256 | 8 | 32 | 110 | 8 |
| East Midlands | 165 | 523 | 0 | 95 | 0 |
| West Midlands | 162 | 93 | 0 | 88 | 16 |
| South West | 106 | 453 | 9 | 121 | 4 |
| North West | 55 | 167 | 4 | 101 | 50 |
| Yorkshire & the Humber | 73 | 220 | 3 | 128 | 0 |
| North East | 20 | 119 | 9 | 76 | 0 |
| England | 1068 | 1618 | 230 | 919 | 169 |

Before the regional guidelines can be used in the preparation of minerals development plans they need to be broken down to mineral planning authority areas. The apportionment of the regional guidelines to sub-regional areas in the north west is the responsibility of the North West Regional Assembly taking into account advice from MPAs and the NWRAP.

A five-year average production level was used for the basis for apportionment, as this best reflected recent supply patterns. The numerical implications for each MPA in terms of sand and gravel and crushed rock provision by apportioning the regional guidelines based on the proportion of MPA production of aggregate over the last five years is detailed below. The new annualised requirement to apportion the new guidelines is lower than the previous MPG6 annualised requirement for each MPA.

Sub Regional Apportionment of Aggregates in the North West 2001-2016 (million tonnes)

| | Sand and Gravel | Annualised Requirement |
|---|-----------------|------------------------|
| Cheshire | 31.5 | 1.97 |
| Cumbria | 11.2 | 0.7 |
| Lancashire | 8.2 | 0.5 |
| Merseyside / Greater Manchester / Halton / Warrington | 4.1 | 0.26 |
| Total | 55.0 | 3.44 |

| | Crushed Rock | Annualised Requirement |
|---|--------------|------------------------|
| Cheshire | 2.17 | 0.13 |
| Cumbria | 65.50 | 4.1 |
| Lancashire | 72.90 | 4.6 |
| Merseyside / Greater Manchester / Halton / Warrington | 26.40 | 1.65 |
| Total | 166.97 | 10.4 |



APPENDIX 6: DCLG (FORMERLY ODPM) UPDATE

AMRI

- 2004 survey on ONS website. Search under PA1007
- Last year of the current contract. ODPM will have to seek funding to continue next year.

AM2005

- Contract let to BGS
- Will complete early in 2007
- SG convened, first meeting held on 19/4
- Will also seek to collect data on sales at a sub-regional level, as far as this is possible. [Need to reconcile with sub-regions to be used in Alternatives survey]
- Additional requirements also include:
 - Origin of imports from outside England and Wales
 - Evaluation in the differences in marine S&G landings between AM/AMRI and CE
 - Sales by transport method at a sub-regional level.
- As last time two forms will be used
 - Form A will be used to collect:
 - sales by aggregate type and major product
 - sales and permitted reserves by region
 - sales and permitted reserves by designation
 - sales by transport method
 - aggregate flows and consumption by region and sub-region
 - Form B will be used to collect:
 - Tonnages and planning permissions 2002 to 2005
 -

SURVEY OF ARISING AND USE OF ALTERNATIVES TO PRIMARY AGGREGATES

- Contract let to Capita Symonds
- England only
- Publication early in 2007
- Similar to previous surveys – will look at three strands:
 - Crushers
 - Landfill
 - Registered exempt sites
- Will collect data on slate and china clay waste
- Will try to collect estimates of production of recycled aggregates at a sub-regional level (but not at a finer scale – likely to be impossible because of mobility of crushers)

JOINT MINERALS INFORMATION PROGRAMME

- Five year contract re-let to BGS.
- The Programme underpins ODPM's statistical base, including the Minerals GIS, mineralsUK.com, DMQ and production of statistics, including the UKMYB.

MINERAL RESOURCES/ RESOURCE MAPPING

- All regions live except for NW. This is likely to follow shortly.

SURVEY OF LAND FOR MINERAL WORKINGS

- Received approval, but it is likely to be dropped because of lack of money.

ALSF

- Defra has not approved an allocation over 70% of the initial value of the fund, i.e. that which has already been committed. So ODPM SAMP Programme curtailed.
- MIST might possibly be curtailed if no funds become available.

ALSF REVIEW

- Report by London Economics in late draft.
- Report likely to recommend continuation of the fund, but under different, slimmed down themes.

APPENDIX 7: RECENT WORKING PARTY PUBLICATIONS

| | Price | Postage & Packaging |
|--|--------|---------------------|
| Annual Report 1994 | £10:00 | 55p |
| Sub-regional Apportionment of Guidelines for Aggregate Provision 92-06 | £5:00 | 30p |
| Annual Report 1995 | £5:00 | 50p |
| Report of the 1993 AM statistics | £5:00 | 50p |
| Annual Report 1996 | £5:00 | 50p |
| Annual Report 1997 (out of stock) | £6:00 | -- |
| Annual Report 1998 | £10:00 | 50p |
| Annual Report 1999 | £9:50 | 50p |
| Annual Report 2000 | £10:00 | 55p |
| Annual Report 2001 | £15:00 | 55p |
| Annual Report 2002 | £20:00 | 55p |
| Annual Report 2003 | £20:00 | 55p |
| Annual Report 2004 | Free | -- |
| Annual Report 2005 | Free | -- |

To obtain reports which are still in print please contact:

Annette Walters
Cheshire County Council
Backford Hall
Chester
CH1 6PZ

Telephone: 01244 603656
Fax: 01244 603033
E-mail: annette.walters@cheshire.gov.uk

Cheques made payable to Cheshire County Council





Published by
North West Regional Aggregates Working Party

Produced on behalf of the Working Party by
Environmental Planning Service
Cheshire County Council

Document No: 573
ISBN: 0906763576