

General Ophthalmic Services: Workforce Statistics for England and Wales

31 December 2004

Ophthalmics Statistics
Price: Free

Published by the Health and Social Care Information Centre

ISBN 1-84636-010-2

This publication may be requested in large print or other formats.

For further information contact:

online: www.ic.nhs.uk

telephone: 0845 300 6016

email: enquiries@ic.nhs.uk

© Health and Social Care Information Centre Copyright 2005

CONTENTS

Ophthalmics Workforce and Premises Statistics for England & Wales at 31 December 2004

• Introduction and Summary	3
• Workforce	
○ Table 1. Number of practitioners by type and country	4
○ Figure 1. Number of practitioners by type and country	4
○ Table 2. Number of practitioners with multiple contracts by type and country	5
○ Figure 2. Percentage of practitioners by sex	5
○ Table 3. Number of practitioners by sex by type by country	6
○ Table 4. Number of practitioners joining or leaving in 2004	7
○ Figure 3. Number of practitioners joining or leaving, 1994-2004	8
• Premises	
○ Table 5. Number of premises by country	8
• Other Publications	9

GENERAL OPHTHALMIC SERVICES WORKFORCE STATISTICS

Introduction

The tables in this publication show the number of optometrists and ophthalmic medical practitioners (OMPs) who held contracts with Primary Care Trusts (PCTs) in England and Local Health Boards (LHBs) in Wales to carry out NHS sight tests at 31 December 2004.

Some of this years overall figures may have been slightly affected by changes in data collection methodology and the introduction of the New Ophthalmics Regulations in April 2005.

Summary

- The total number of practitioners increased by 1.8% from 8,762 at 31 December 2003 to 8,920 at 31 December 2004. (*Table 1, Figure 1*)
- The number of optometrists increased by 2.3% from 8,140 to 8,328 while the number of OMPs decreased by 4.8% from 622 to 592 (*Table 1, Figure 1*)
- Just less than half (49%) of the practitioners in England and Wales held a contract with more than one PCT/LHB at 31 December 2004. (*Table 2*)
- At 31 December 2004, female practitioners represented 44% of the overall total (46% of optometrists and 17% of OMPs). The overall percentage (44%) has risen steadily from 37% in 1994. (*Table 3, Figure 2*)
- The number of practitioners' premises was up by 0.6% on last year, from 6,552 in 2003 to 6,604 in 2004. (*Table 5*)

Note

1. Health Authorities took over the responsibilities of Family Health Service Authorities (FHSAs) from April 1996.
2. Guidance was issued to Health Authorities in January 2001 to include practitioners employed in mobile practices carrying out domiciliary visits on their lists.
3. PCTs took over responsibilities for ophthalmic matters from October 2002. PCTs used this opportunity to review the opticians and premises list thoroughly. All practitioners were asked to confirm that they are working in the PCT area, any practitioners who did not reply was taken off the ophthalmic list
4. LHBs took over responsibilities of Health Authorities in Wales from 1 April 2003.

If you have any query on these figures, please contact

<p>Steve Greenfield Ophthalmic Statistics Lead Health and Social Care Information Centre 1 Trevelyan Square Boar Lane Leeds LS1 6AE</p>
<p>Telephone 0113-254-7060</p>

GENERAL OPHTHALMIC SERVICES: WORKFORCE

Table 1 Number of practitioners by country¹ as at 31 December 2004

	England			Wales			England & Wales ¹		
	Optometrists	OMPs	Total	Optometrists	OMPs	Total	Optometrists	OMPs	Total
1993	5914	705	6619	485	45	530	6238	738	6976
1994	5972	650	6622	489	39	528	6299	680	6979
1995	6120	658	6778	510	43	553	6453	690	7143
1996	6264	675	6939	483	39	522	6592	708	7300
1997	6395	696	7091	525	42	567	6730	730	7460
1998	6572	733	7305	531	39	570	6907	765	7672
1999	6811	706	7517	542	40	582	7170	737	7907
2000	7116	708	7824	558	44	602	7490	742	8232
2001 ²	7405	698	8103	554	45	599	7781	731	8512
2002	7461	635	8096	559	40	599	7850	663	8513
2003	7734	597	8331	594	35	629	8140	622	8762
2004	7907	565	8472	638	34	672	8328	592	8920

¹ Practitioners contracted to more than one PCT /LHB (formerly FHSA/HA) are counted only once unless they have contracts in both England and Wales, in which case they appear in the figures for both countries but only once in the combined England and Wales total. The separate figures for England and Wales do not, therefore, sum to the overall total.

² Revised since first published.

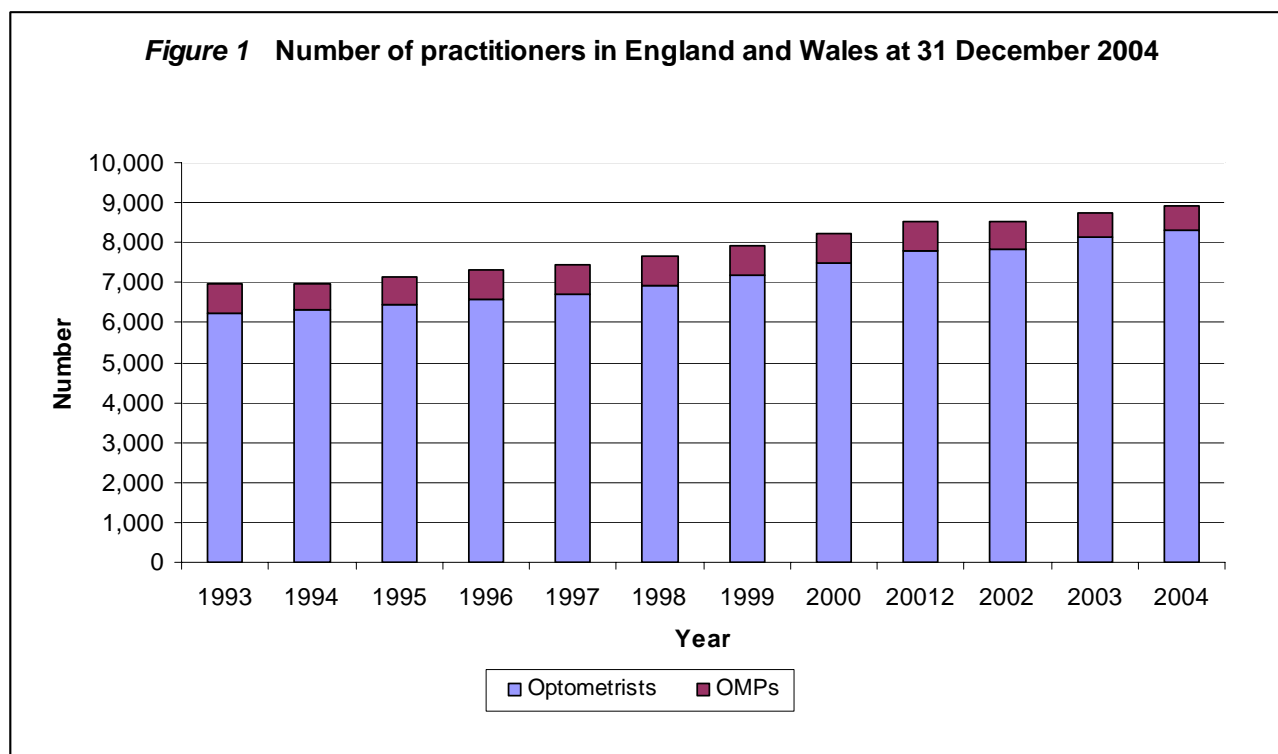


Table 2 Number of practitioners and number with multiple contracts by country as at 31 December 2004

	Number of Practitioners ¹	Number who have contracts with more than one PCT/LHB
England		
Optometrists	7907	3971
OMPs	565	288
Total	8472	4259
Wales		
Optometrists	638	288
OMPs	34	16
Total	672	304
England & Wales ¹		
Optometrists	8328	4043
OMPs	592	289
Total	8920	4332

¹ Practitioners contracted to more than one PCT/LHB (formerly FHSA/HA) are counted only once unless they have contracts in both England and Wales, in which case they appear in the figures for both countries but only once in the combined England and Wales total. The separate figures for England and Wales do not, therefore, sum to the overall total.

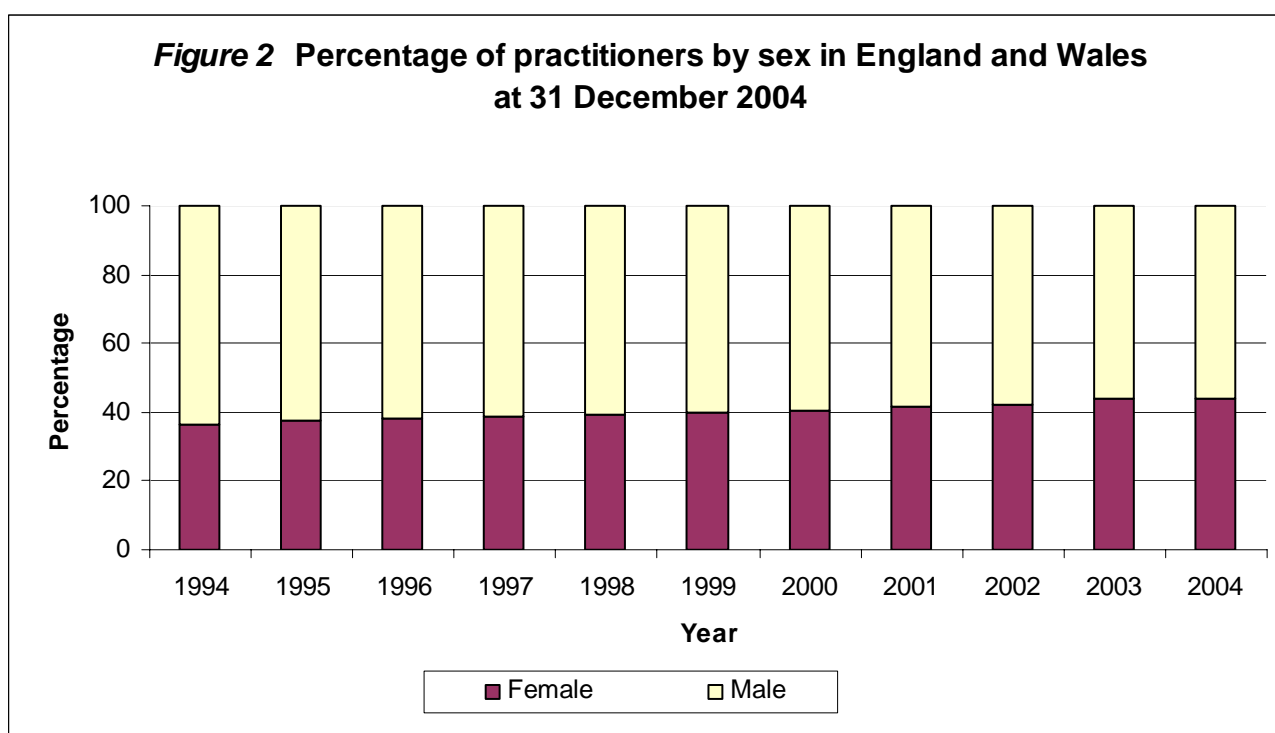


Table 3 Number of practitioners¹ by sex as at 31 December 2004

	<u>1994</u>	<u>1995</u>	<u>1996</u>	<u>1997</u>	<u>1998</u>	<u>1999</u>	<u>2000</u>	<u>2001²</u>	<u>2002</u>	<u>2003</u>	<u>2004</u>
Optometrists											
England											
Male	3634	3670	3714	3763	3812	3912	4044	4165	4141	4196	4292
Female	2338	2450	2550	2632	2760	2899	3072	3240	3320	3538	3615
Total	5972	6120	6264	6395	6572	6811	7116	7405	7461	7734	7907
Female as % of total	39.1	40.0	40.7	41.2	42.0	42.6	43.2	43.8	44.5	45.7	45.7
Wales											
Male	299	309	283	303	310	313	324	322	313	321	341
Female	190	201	200	222	221	229	234	232	246	273	297
Total	489	510	483	525	531	542	558	554	559	594	638
Female as % of total	38.9	39.4	41.4	42.3	41.6	42.3	41.9	41.9	44.0	46.0	46.6
England and Wales											
Male	3846	3886	3918	3968	4017	4126	4257	4374	4351	4407	4507
Female	2453	2567	2674	2762	2890	3044	3233	3407	3499	3733	3821
Total	6299	6453	6592	6730	6907	7170	7490	7781	7850	8140	8328
Female as % of total	38.9	39.8	40.6	41.0	41.8	42.5	43.2	43.8	44.6	45.9	45.9
OMPs											
England											
Male	545	550	562	580	615	587	594	584	530	494	470
Female	105	108	113	116	118	119	114	114	105	103	95
Total	650	658	675	696	733	706	708	698	635	597	565
Female as % of total	16.1	16.4	16.7	16.9	16.1	16.9	16.1	16.3	16.5	17.3	16.8
Wales											
Male	32	36	32	35	32	34	36	38	35	30	29
Female	7	7	7	7	7	6	8	7	5	5	5
Total	39	43	39	42	39	40	44	45	40	35	34
Female as % of total	17.9	16.3	17.9	16.7	17.9	15.0	18.2	15.6	12.5	14.3	14.7
England and Wales											
Male	571	578	590	609	642	614	621	612	554	515	493
Female	109	112	118	121	123	123	121	119	109	107	99
Total	680	690	708	730	765	737	742	731	663	622	592
Female as % of total	16.0	16.2	16.7	16.6	16.1	16.7	16.3	16.3	16.4	17.2	16.7
Optometrists and OMPs											
England											
Male	4179	4220	4276	4343	4427	4499	4638	4749	4671	4690	4762
Female	2443	2558	2663	2748	2878	3018	3186	3354	3425	3641	3710
Total	6622	6778	6939	7091	7305	7517	7824	8103	8096	8331	8472
Female as % of total	36.9	37.7	38.4	38.8	39.4	40.1	40.7	41.4	42.3	43.7	43.8
Wales											
Male	331	345	315	338	342	347	360	360	348	351	370
Female	197	208	207	229	228	235	242	239	251	278	302
Total	528	553	522	567	570	582	602	599	599	629	672
Female as % of total	37.3	37.6	39.7	40.4	40.0	40.4	40.2	39.9	41.9	44.2	44.9
England & Wales											
Male	4417	4464	4508	4577	4659	4740	4878	4986	4905	4922	5000
Female	2562	2679	2792	2883	3013	3167	3354	3526	3608	3840	3920
Total	6979	7143	7300	7460	7672	7907	8232	8512	8513	8762	8920
Female as % of total	36.7	37.5	38.2	38.6	39.3	40.1	40.7	41.4	42.4	43.8	43.9

¹ Practitioners contracted to more than one PCT /LHB (formerly FHSA/HA) are counted only once unless they have contracts in both England and Wales, in which case they appear in the figures for both countries but only once in the combined England and Wales total. The separate figures for England and Wales do not, therefore, sum to the overall total.

Table 4 Number of practitioners¹ joining or leaving the General Ophthalmic Services at 31 December 2004²

	<u>1994</u>	<u>1995</u>	<u>1996</u>	<u>1997</u>	<u>1998</u>	<u>1999</u>	<u>2000</u>	<u>2001⁴</u>	<u>2002</u>	<u>2003</u>	<u>2004</u>
Optometrists											
England											
No. at start of year	5914	5972	6120	6264	6395	6572	6811	7116	7405	7461	7734
Joiners ³	423	385	410	434	459	503	559	597	606	697	555
Leavers ³	365	237	266	303	282	264	254	308	550	424	382
No. at end of year	5972	6120	6264	6395	6572	6811	7116	7405	7461	7734	7907
Wales											
No. at start of year	485	489	510	483	525	531	542	558	554	559	594
Joiners ³	39	31	49	57	47	39	62	52	55	60	54
Leavers ³	35	10	76	15	41	28	46	56	50	25	10
No. at end of year	489	510	483	525	531	542	558	554	559	594	638
England and Wales											
No. at start of year	6238	6299	6453	6592	6730	6907	7170	7490	7781	7850	8140
Joiners ³	427	385	423	441	467	524	577	612	614	711	565
Leavers ³	366	231	284	303	290	261	257	321	545	421	377
No. at end of year	6299	6453	6592	6730	6907	7170	7490	7781	7850	8140	8328
OMPs											
England											
No. at start of year	705	650	658	675	696	733	706	708	698	635	597
Joiners ³	31	47	54	61	78	53	52	48	30	33	23
Leavers ³	86	39	37	40	41	80	50	58	93	71	55
No. at end of year	650	658	675	696	733	706	708	698	635	597	565
Wales											
No. at start of year	45	39	43	39	42	39	40	44	45	40	35
Joiners ³	2	4	1	3	0	4	7	7	4	0	0
Leavers ³	8	0	5	0	3	3	3	6	9	5	1
No. at end of year	39	43	39	42	39	40	44	45	40	35	34
England and Wales											
No. at start of year	738	680	690	708	730	765	737	742	731	663	622
Joiners ³	32	49	54	62	78	53	56	49	32	31	23
Leavers ³	90	39	36	40	43	81	51	60	100	72	53
No. at end of year	680	690	708	730	765	737	742	731	663	622	592
England											
No. at start of year	6619	6622	6778	6939	7091	7305	7517	7824	8103	8096	8331
Joiners ³	454	432	646	495	537	556	611	645	636	730	578
Leavers ³	451	276	303	343	323	344	304	366	643	495	437
No. at end of year	6622	6778	6939	7091	7305	7517	7824	8103	8096	8331	8472
Wales											
No. at start of year	530	528	553	522	567	570	582	602	599	599	629
Joiners ³	41	35	50	60	47	43	69	59	59	60	54
Leavers ³	43	10	81	15	44	31	49	62	59	30	11
No. at end of year	528	553	522	567	570	582	602	599	599	629	672
England and Wales											
No. at start of year	6976	6979	7143	7300	7460	7672	7907	8232	8512	8513	8762
Joiners ³	459	434	477	503	545	577	633	661	646	742	588
Leavers ³	456	270	320	343	333	342	308	381	645	493	430
No. at end of year	6979	7143	7300	7460	7672	7907	8232	8512	8513	8762	8920

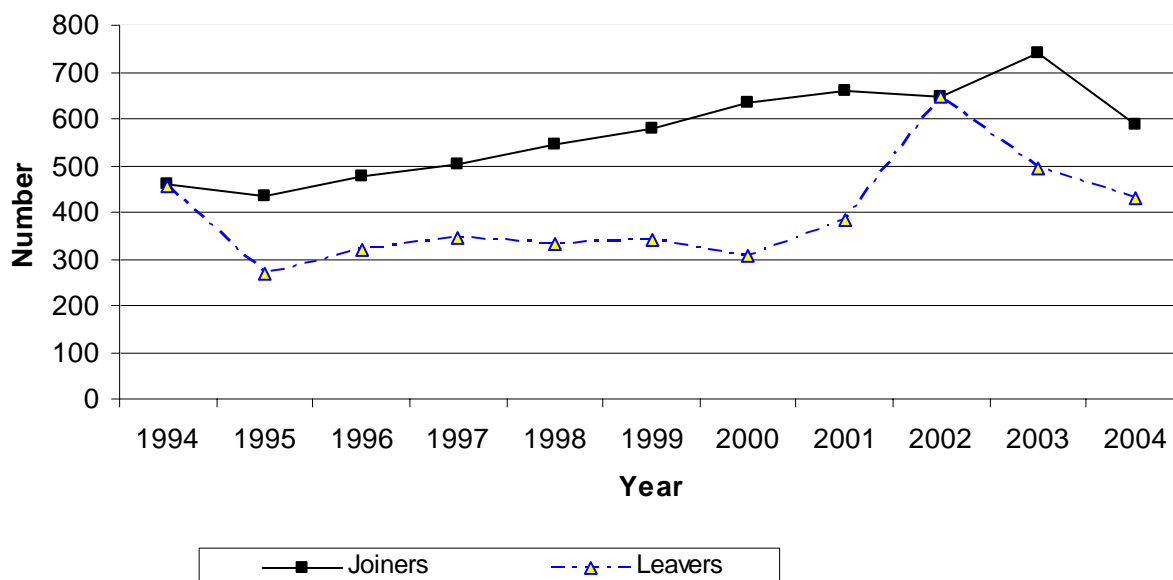
1 Practitioners contracted to more than one PCT/LHB (formerly FHSA/HA) are counted only once unless they have contracts in both England and Wales, in which case they appear in the figures for both countries but only once in the combined England and Wales total. The separate figures for England and Wales do not, therefore, sum to the overall total.

2 Figures may be affected by how thoroughly and regularly a PCT/LHB (formerly FHSA/HA) reviews its list.

3 Practitioners are counted as leavers only if they have relinquished all contracts with HAs in England, Wales or England and Wales. They are counted as joiners only if they had no contracts at the start of the year; additional contracts will not be reflected as joiners unless they are in different countries. Movement between England and Wales will be reflected in the figures for those countries, but not in the overall figures for England and Wales.

4 Revised since first published.

Figure 3 Number of practitioners joining or leaving the General Ophthalmic Services in England and Wales during 2004



GENERAL OPHTHALMIC SERVICES: PREMISES

Table 5 Number of premises by country as at 31 December 2004

	England			Wales			England & Wales		
	Optometrist ¹	Other ²	Total	Optometrist ¹	Other ²	Total	Optometrist ¹	Other ²	Total
1994	5103	833	5936	377	40	417	5480	873	6353
1995	5176	924	6100	366	39	405	5542	963	6505
1996 ³	5342	878	6220	493	55	548 ³	5835	933	6768
1997 ⁴	6396	409	6805
1998 ⁴	6485	409	6894
1999 ⁴	6566	418	6984
2000 ⁴	6467	401	6868
2001 ⁴	6477	401	6878
2002 ⁴	6139	405	6544
2003 ⁴	6192	388	6552
2004 ⁴	6207	397	6604

.. not available

1 Premises where the owner or manager is registered with the GOC as an Optometrist.

2 Premises where the owner or manager is not registered with the GOC as an Optometrist.

3 The number of premises in 1996 may be unreliable due to some double counting where HAs had not fully reviewed the lists taken over from FHSAs.

4 Since 1997, some HAs/PCTs have been unable to confirm the correct classification of premises, particularly those owned by corporate bodies, so the split between Optometrists' and Other premises has not been shown.

OTHER PUBLICATIONS

Other publications on Ophthalmics statistics include:

- Statistical Bulletin
 - Annual summarised information relevant to the General Ophthalmic Services in England.
- Activity Statistics
 - Six monthly and annual numbers of NHS sight tests, vouchers for spectacles, repairs and replacements for spectacles, and domiciliary visits.
- Consultation tables
 - Annual Information showing rates per population for ophthalmic services in England, Wales, Scotland (summary only) and Great Britain (summary only).
- Sight Tests Volume and Workforce survey.
 - Annual Summary results of the overall volume of sight tests (NHS and private) and the working patterns of optometrists in Great Britain.
- Voucher survey
 - Measures the operation of the NHS spectacle voucher scheme in Great Britain., last done in 2001.

The latest copies are available from

- Steve Greenfield, Ophthalmics Statistics Lead, on 0113 254 7060
- 0845 300 6016 or enquiries@ic.nhs.uk,
- The following web site addresses:
 - Workforce Statistics
<http://www.dh.gov.uk/workforcestatistics> then click on link “Other NHS staff: General practice, general dental and ophthalmic services”
 - All except Workforce Statistics
<http://www.dh.gov.uk/healthcarestatistics> then click on link “Ophthalmics and dentistry”